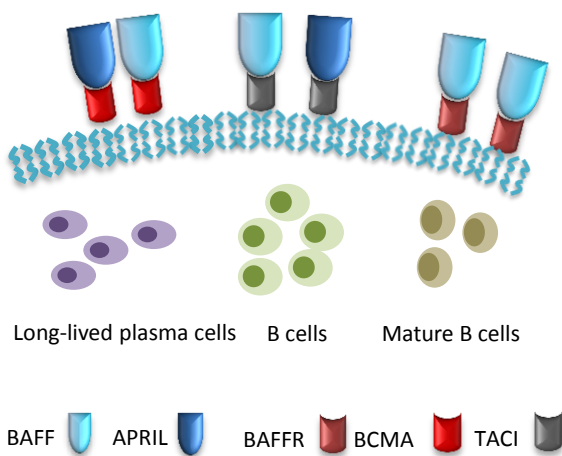


Biotinylated BCMA Proteins

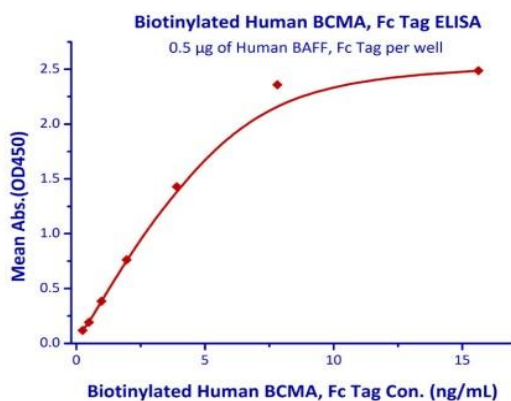
BCMA is selectively induced during plasma cell differentiation and is nearly absent on naive and memory B cells (Avery et al., 2003; Chiu et al., 2007). The interaction between BCMA and its ligand BAFF and APRIL is involved for the maintenance of long-lived plasma cells (O'Connor et al., 2004; Peperzak et al., 2013). Multiple BCMA-targeted therapies of B-cell derived malignancies are underdevelopment, including BCMA-targeting chimeric antigen receptor T (CAR-T) and GlaxoSmithKline's GSK2857916.



Selective interaction between BAFF/APRIL and their receptors. Note BCMA can interact with both BAFF and APRIL (Bolkun et al., 2016). The affinity of APRIL-BCMA interaction, however, is much higher than that of BAFF-BCMA binding (Bossen and Schneider, 2006).

ACROBiosystems provides a comprehensive panel of BCMA proteins, including the exclusive biotinylated BCMA (Cat. # BC7-H82F0) and the monomeric BCMA (Cat. # BCA-H522y).

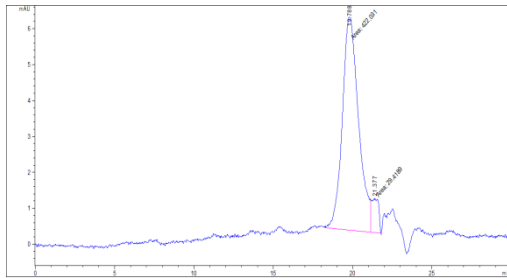
Molecule	Cat. No	Species	Structure
BCMA (Biotin-labeled)	BC7-H82F0	Human	BCMA (1-54) Fc Avi



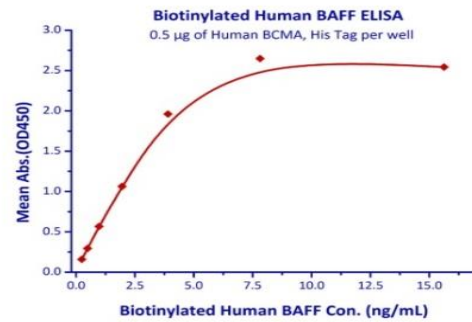
Immobilized Human BAFF, Fc Tag (Catalog # BAF-H4268) at 5µg/mL (100 µL/well) can bind Biotinylated Human BCMA, Fc Tag (Cat. # BC7-H82F0) with a linear range of 0.12-1.95 ng/mL.

Biotinylated BCMA Proteins

Molecule	Cat. No	Species	Structure
BCMA	BCA-H522y	Human	BCMA (1-54) His



The purity of Human BCMA, His Tag (Cat. # BCA-H522y) is greater than 93% as determined by SEC-HPLC.



Immobilized Human BCMA, His Tag (Cat. # BCA-H522y) at 5µg/mL (100 µL/well) can bind Biotinylated Human BAFF (Cat. # BAF-H82Q2) with a linear range of 0.24-3.9 ng/mL.

Molecule	Cat. No	Species	Structure
BCMA (FITC)	BCA-HF254	Human	BCMA (1-54) Fc
BCMA	BC7-H5254	Human	BCMA (1-54) Fc
BAFF	BAF-H4218	Human	BAFF (134-285)
BAFF	BAF-H4268	Human	Fc BAFF (134-285)
BAFF	BAF-H5248	Human	His BAFF (134-285)
BAFF (Biotin-labeled)	BAF-H82F3	Human	Avi Fc BAFF (134-285)
BAFF (FITC)	BAF-HF268	Human	Fc BAFF (134-285)
BAFF (Biotin-labeled)	BAF-H82Q2	Human	His Avi BAFF (134-285)
BAFFR (Biotin-labeled)	BAR-M82F0	Mouse	BAFFR (10-71) Fc Avi

Coming soon

Biotinylated Cyno-BCMA & Biotinylated mouse BAFFR.

References

Avery, D.T., Kalled, S.L., Ellyard, J.I., Ambrose, C., Bixler, S.A., Thien, M., Brink, R., Mackay, F., Hodgkin, P.D., and Tangye, S.G. (2003). BAFF selectively enhances the survival of plasmablasts generated from human memory B cells. *J. Clin. Invest.* 112, 286–297.

Chiu, A., Xu, W., He, B., Dillon, S.R., Gross, J.A., Sievers, E., Qiao, X., Santini, P., Hyjek, E., Lee, J., et al. (2007). Hodgkin lymphoma cells express TACI and BCMA receptors and generate survival and proliferation signals in response to BAFF and APRIL. *Blood* 109, 729–739.

O'Connor, B.P., Raman, V.S., Erickson, L.D., Cook, W.J., Weaver, L.K., Ahonen, C., Lin, L.-L., Mantchev, G.T., Bram, R.J., and Noelle, R.J. (2004). BCMA Is Essential for the Survival of Long-lived Bone Marrow Plasma Cells. *J. Exp. Med.* 199, 91–98.

Peperzak, V., Vikström, I., Walker, J., Glaser, S.P., LePage, M., Coquery, C.M., Erickson, L.D., Fairfax, K., Mackay, F., Strasser, A., et al. (2013). Mcl-1 is essential for the survival of plasma cells. *Nat. Immunol.* 14, 290–297.

Bolkun, L., Grubczak, K., Schneider, G., Zembko, P., Radzikowska, U., Singh, P., Kloczko, J., Ratajczak, M.Z., Moniuszko, M., and Eljaszewicz, A. (2016). Involvement of BAFF and APRIL in Resistance to Apoptosis of Acute Myeloid Leukemia. *J. Cancer* 7, 1979–1983.

Bossen, C., and Schneider, P. (2006). BAFF, APRIL and their receptors: structure, function and signaling. *Semin. Immunol.* 18, 263–275.

+ 1 800-810-0816 (US/Canada/EU)
 + 86 400-682-2521 (Asia & Pacific)
 techsupport@acrobiosystems.com
 www.acrobiosystems.com
 1 Innovation Way,
 Newark, DE 19711