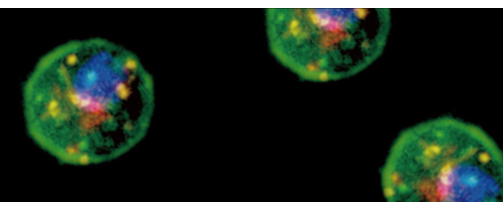


mutaFISH™ (mutation-specific Fluorescence *In Situ* Hybridization)

Single Cell, Single Molecule, DNA and RNA Mutation Detection at Single Nucleotide Resolution

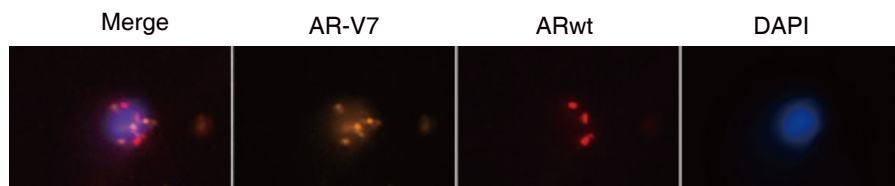


Advantages

- Single Cell, Single Molecule Detection
- *In Situ* Analysis of DNA and RNA
- Single Nucleotide Resolution
- Higher Sensitivity than dPCR and NGS
- Multiplexing Capability
- Cross Analytical Platforms
- No DNA or RNA Extraction

Applications

Cell *In Situ* Hybridization



mutaFISH™ staining was performed *in situ* in human CWR22Rv1 cells captured by CytoQuest™ CR. AR-V7 was detected via orange signal (Cy3), and ARwt was detected via red signal (Cy5).

Circulating Tumor Cell *In Situ* Hybridization



mutaFISH™ staining was performed *in situ* in CTCs from NSCLC patient. CTCs were detected by using immunofluorescence staining for CSV (FITC, green). EGFR L858R point mutation was detected via orange signal (Cy3) and EGFR Ex19wt was detected via purple signal (Texas Red).

Fresh Frozen Tissue *In Situ* Hybridization

Formalin-Fixed Paraffin-Embedded Tissue *In Situ* Hybridization

Flow Cytometry Mutation-Based Cell Sorting

Microfluidic DNA Detection

Point Mutations, Gene Amplification, and Translocation mutaFISH™ Probes and Accessory Kits

Catalog No. Product Name

FP0013	mutaFISH™ ACTBwt RNA Probes
FP0004	mutaFISH™ AR-V7 ARwt RNA Probes
FP0011	mutaFISH™ BRAF V600E V600wt RNA Probes
FP0009	mutaFISH™ CEP1wt CEP7wt CEP8wt CEP17wt DNA Probes
FP0008	mutaFISH™ CEP1wt DNA Probes
FP0006	mutaFISH™ CEP7wt DNA Probes
FP0005	mutaFISH™ CEP8wt DNA Probes
FP0007	mutaFISH™ CEP17wt DNA Probes
FP0015	mutaFISH™ c-Mycwt RNA Probes
FP0001	mutaFISH™ EGFR T790M T790wt RNA Probes
FP0002	mutaFISH™ EGFR L858R L858wt Ex19wt RNA Probes
FP0014	mutaFISH™ EML4wt ALKwt RNA Probes
FP0010	mutaFISH™ HER2wt DNA Probes
FP0012	mutaFISH™ IDH1 R132H R132wt IDH2 R172K R172wt RNA Probes
FP0017	mutaFISH™ KRAS G12wt G13wt RNA Probes
FP0003	mutaFISH™ MYCNwt DNA Probes
FP0016	mutaFISH™ TERTwt RNA Probes
KA4915	mutaFISH™ RNA Accessory Kit
KA4916	mutaFISH™ DNA Accessory Kit 1 for Cells
KA4928	mutaFISH™ DNA Accessory Kit 2 for Cells