

Full Length Multi-transmembrane CD20 Protein

HEK293 & Insect cells expression to meet your biologic drugs research

CD20 is a hot target for the treatment of lymphoma, leukemia and some autoimmune diseases. However, due to the difficulty of expression and the unstable bioactivity, it is so difficult to find a suitable CD20 protein on the market for detecting bioactivity of antibody drug and CD20 CAR expression.

To address these issues, ACROBiosystems has developed the full length multi-transmembrane CD20 proteins, expressed by HEK293 cells and Insect cells, respectively. The purity and bioactivity of full length CD20 protein were verified by SDS-PAGE, ELISA, SPR and BLI. ACROBiosystems also offers full length CD20 protein for immunization and evaluation of CD20-CAR expression.

Product List



Molecule	Cat. No.	Host	Product Description
CD20/MS4A1	CD0-H55Ha	Insect cells-HI5	Human CD20 / MS4A1 Full Length Protein, His Tag (Insect cell)
	CD0-H52H3	HEK293	Human CD20 / MS4A1 Full Length Protein, His Tag (HEK293)

Product Features

- Full length CD20 protein has a complete conformation with both small and big loops.

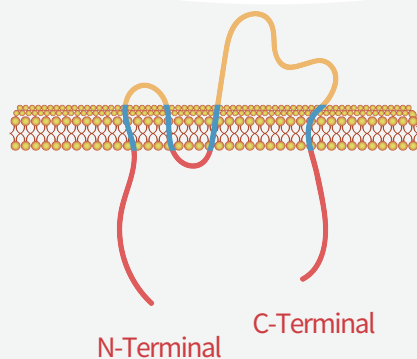
Common ECD CD20 protein (*E.coli* expression)

VS

ACROBiosystems full length CD20 protein (HEK293 & Insect cells expression)



E (Extracellular)



E (Extracellular)

P (Plasma Membrane)

C (Cytoplasmic)

N-Terminal

C-Terminal

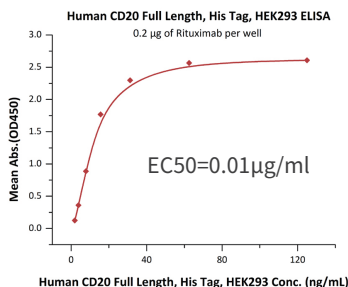
■ Full length CD20 protein has better bioactivity and can be used for ELISA/ SPR/ BLI.

A) HEK293 Cell (Full Length)

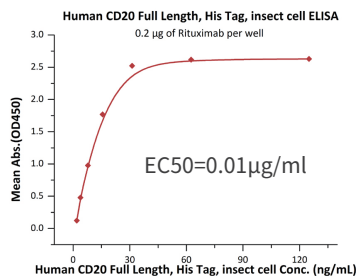
B) Insect Cell (Full Length)



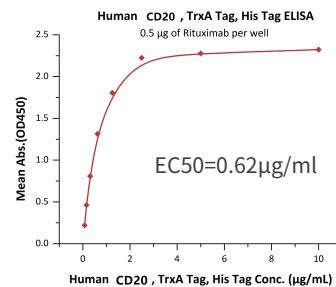
C) E.coli (Extracellular)



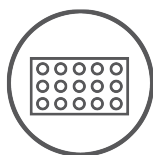
Immobilized Rituximab at 2 µg/mL (100 µL/well) can bind Human CD20 Full Length, His Tag (Cat. No. CD0-H52H3, HEK293) with a linear range of 2-16 ng/mL.



Immobilized Rituximab at 2 µg/mL (100 µL/well) can bind Human CD20 Full Length, His Tag (Cat. No. CD0-H55Ha, insect cell) with a linear range of 1-16 ng/mL.



Immobilized Rituximab at 5 µg/mL (100 µL/well) can bind Human CD20, TrxA Tag, His Tag (E.coli) with a linear range of 78-2500 ng/mL.



ELISA



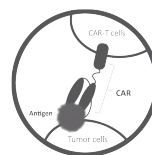
SPR



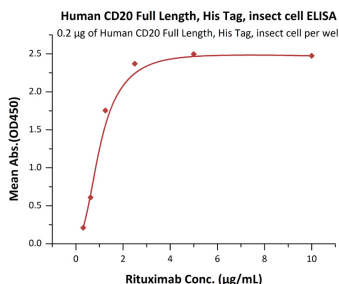
BLI



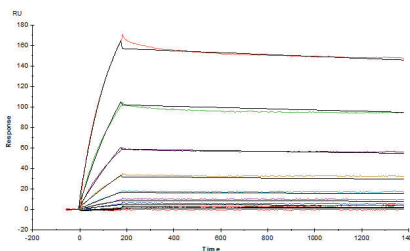
Immunization



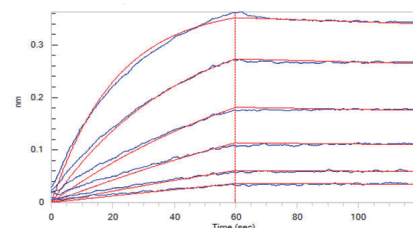
CAR-T



Immobilized Human CD20 Full Length, His Tag (Cat. No. CD0-H55Ha, insect cell) at 2 µg/mL (100 µL/well) on Nickel Coated Plate, can bind rituximab with a linear range of 0.313-1.25 µg/mL.



Ofatumumab® (Human IgG1) captured on CM5 chip via Anti-human IgG Fc antibodies surface can bind Human CD20 Full Length, His Tag (Cat. No. CD0-H52H3, HEK293) with an affinity constant of 3.57 nM as determined in an SPR assay (Biacore T200).



MabThera® (Rituximab) loaded on AHC biosensor, can bind Human CD20 Full Length, His Tag (Cat. No. CD0-H55Ha, insect cell) with an affinity constant of 4.7 nM as determined in BLI (ForteBio Octet Red96e) assay (in presence of DDM).

*All the protocols can be provided and feel free to send email to CD20@acrobiosystems.com to request.

*ACROBiosystems also offers full length CD20 protein for immunization and evaluation of CD20-CAR expression.

Welcome to contact us for more information.

