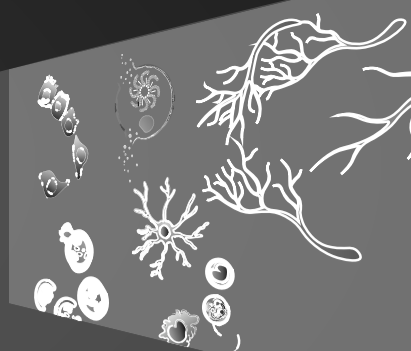


20% Discount on DUO/PANEL products



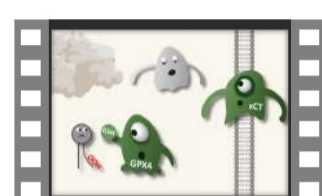
Ferroptosis / Oxytosis

Ferroptosis / Oxytosis Antibody Panel (ARG30337)

Ideal for studying ferroptosis in cancer cells and oxytosis in neuronal cells

- Includes the **molecular markers** of ferroptosis and oxytosis
- Includes the marker of **lipid peroxidation**
- Works on **human, mouse, and rat** samples

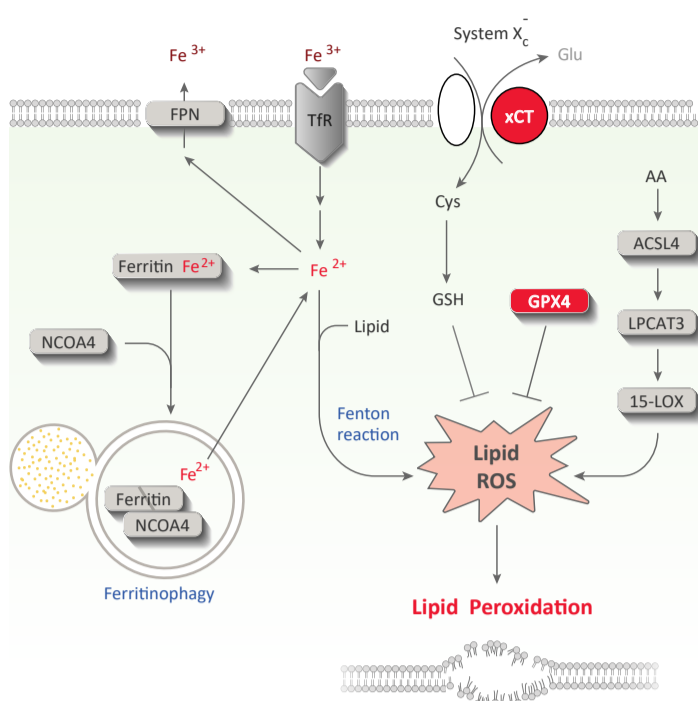
| Component | Reactivity | Application |
|-----------------------|-------------|-------------------|
| GPX4 antibody | Hu, Ms, Rat | ICC/IF, IHC-P, WB |
| xCT antibody | Hu, Ms, Rat | ICC/IF, IP, WB |
| 4-HNE antibody [12F7] | | ELISA, ICC/IF, WB |



Ferroptosis



arigo minifilm



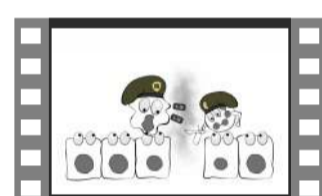
Pyroptosis

Pyroptosis Antibody Panel (ARG30330)

Ideal for studying canonical pyroptosis pathway

- Includes **Caspase-1, GSDMD, and IL-1 β** antibodies
- Detects both **pro-** and **cleaved** forms of the key proteins
- Includes **loading control** antibody
- Works on **human and mouse** samples

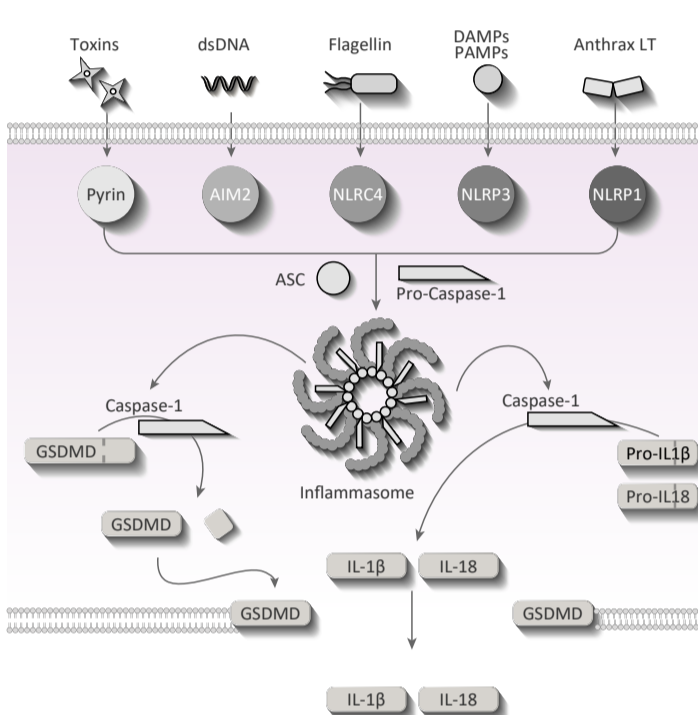
| Component | Reactivity | Application |
|----------------------------------|-------------------------|--------------------------------|
| Caspase-1 antibody | Hu, Ms | ICC/IF, IHC-P, IP, WB |
| GSDMD antibody | Hu, Ms, Rat | ICC/IF, WB |
| IL-1 β antibody [SQab1748] | Hu, Ms | ELISA, FACS, ICC/IF, IHC-P, WB |
| β -Tubulin antibody [BT7R] | Hu, Ms, Rat, Ck, Mk, Rb | ELISA, ICC/IF, WB |



Inflammasome & Pyroptosis



arigo minifilm



NLRP3 Inflammasome Antibody Panel (ARG30331)

- Includes NLRP3 inflammasome components **NLRP3, ASC** and **Caspase-1** antibodies
- Includes **loading control** antibody
- Works on **human and mouse** samples

| Component | Reactivity | Application |
|----------------------|-----------------------|---------------------------|
| NLRP3 antibody | Hu, Ms, Rat | IHC-P, WB |
| ASC antibody | Hu, Ms | WB |
| Caspase-1 antibody | Hu, Ms | ICC/IF, IHC-P, IP, WB |
| GAPDH antibody [6C5] | Hu, Ms, Rat, and more | ELISA, ICC/IF, IHC-Fr, WB |

NLRC4 Inflammasome Antibody Panel (ARG30332)

- Includes NLRC4 inflammasome components **NLRC4, ASC** and **Caspase-1** antibodies
- Includes **loading control** antibody
- Works on **human and mouse** samples

| Component | Reactivity | Application |
|----------------------|-----------------------|---------------------------|
| NLRC4 antibody | Hu, Ms | ICC/IF, IHC-P, WB |
| ASC antibody | Hu, Ms | WB |
| Caspase-1 antibody | Hu, Ms | ICC/IF, IHC-P, IP, WB |
| GAPDH antibody [6C5] | Hu, Ms, Rat, and more | ELISA, ICC/IF, IHC-Fr, WB |

GSDME-mediated Pyroptosis Antibody Panel (ARG30343)

- Includes **Caspase-3, GSDME, and HMGB1** antibodies
- Detects both **pro-** and **cleaved** forms of Caspase-3 and GSDME
- Good for detecting lytic cell death
- Works on **human, mouse and rat** samples

| Component | Reactivity | Application |
|---------------------------|-------------|--------------------------------|
| Caspase-3 antibody | Hu, Ms, Rat | ICC/IF, IHC-P, IP, WB |
| GSDME antibody | Hu, Ms, Rat | FACS, IP, WB |
| HMGB1 antibody [SQab1711] | Hu, Ms, Rat | ELISA, FACS, ICC/IF, IHC-P, WB |

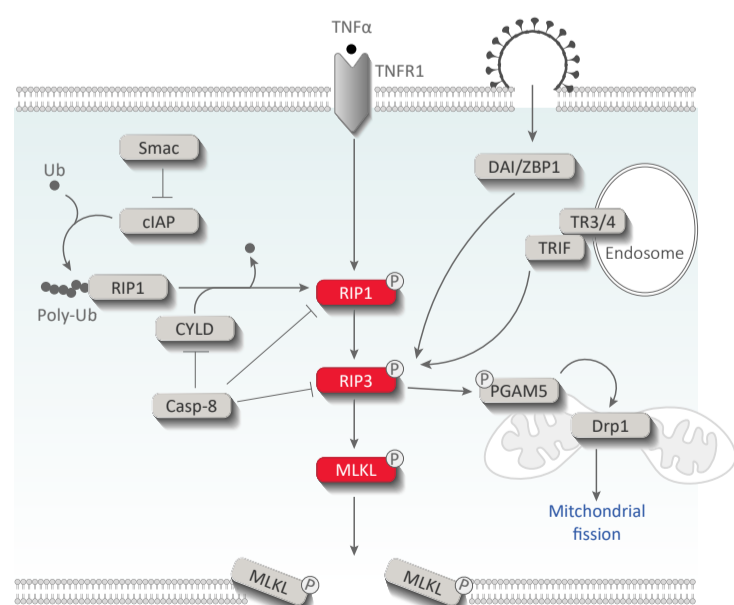
Necroptosis

Necrosome Antibody Panel (ARG30344)

Ideal for studying necrosome

- Includes necrosome components **RIP1, RIP3, and MLKL** antibodies
- Works on **human and mouse** samples

| Component | Reactivity | Application |
|---------------|-------------|--------------------------------------|
| RIP1 antibody | Hu, Ms, Rat | ICC/IF, WB |
| RIP3 antibody | Hu, Ms, Rat | ELISA, ICC/IF, IHC-Fr, IHC-P, IP, WB |
| MLKL antibody | Hu, Ms | IHC-P, WB |



Apoptosis

Apoptosis Marker Antibody Duo (ARG30105)

- Includes **Caspase-3** antibody for detecting both **pro-** and **cleaved** forms
- Includes **PARP (cleaved)** antibody

| Component | Reactivity | Application |
|--------------------------|------------|-------------|
| Caspase-3 antibody [C33] | Hu | WB |
| PARP (cleaved) antibody | Hu | IHC, WB |