

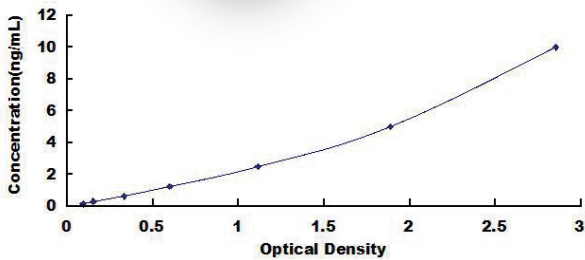


Cloud-Clone Corp.

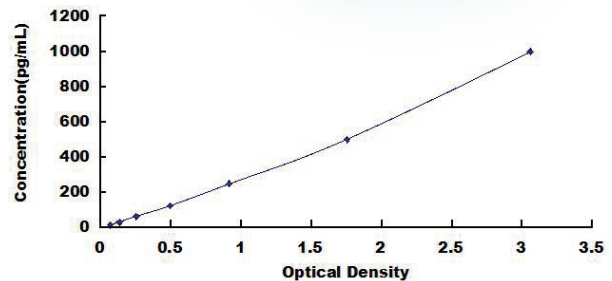
Cloud-Clone Mini Samples ELISA Kits

- Difficult sampling, sparse sample size?
- Limited sample size, too many detection targets?
- Precious samples, low fault tolerance?

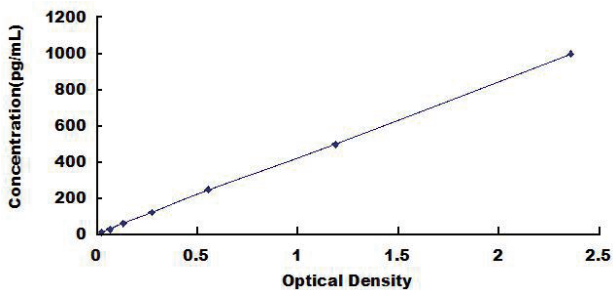
Cloud-Clone Mini Samples ELISA Kits requires only 25ul sample size to complete the detection of targets.



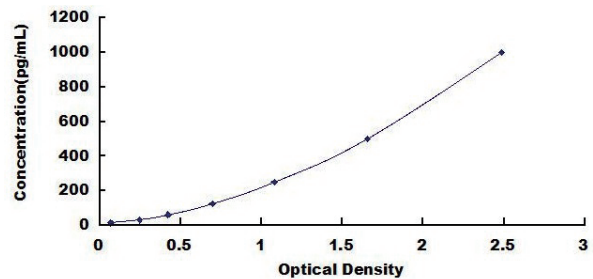
Mini Samples ELISA Kit for Leptin (LEP) (Cat: MEA084Hu)



Mini Samples ELISA Kit for Macrophage Inflammatory Protein 4 Alpha (MIP4a) (Cat: MEC091Mu)



Mini Samples ELISA Kit for Troponin T Type 2, Cardiac (TNNT2) (Cat: MED232Hu)



Mini Samples ELISA Kit for Transforming Growth Factor Beta 1 (TGFB1) (Cat: MEA124Hu)

Congratulations to Cloud-Clone for winning ELISA kit supplier to watch in 2020

In March 2020, CiteAb, the world-renowned biological reagent search engine, awarded Cloud-Clone as the “ELISA kit supplier to watch in 2020” . This is a great inspiration of Cloud-Clone. The number of citations of Cloud-Clone ELISA kits come out top in terms of various disease and cancer markers, cytokines and signaling pathways, etc.. In recent years, Cloud-Clone have been fully realized self-research, self-production and self-marketing. Antibodies and antibody pairs are the raw materials for ELISA kits, so ensuring the quality of antibodies is the most significant step.



Target	Core. No	Magazine	IF	Pubmed ID/DOI
LDLRAP1	D104	Nature Biotechnology	43.113	24213763
SMD	X053	Nature	42.778	10.1038/s41586-020-2121-3
T3	A453	Nature	42.778	33177714
PINP	A957	Nature	42.778	30185903
TAT	A831	Nature	42.778	22407318
HSP90aB1	D522	Cell	38.637	10.1016/j.cell.2020.05.043
CTXI	A665	Cell	38.637	32640190
FGL1	D022	Cell	38.637	30454647
SCT	B075	Cell	38.637	30449620
MCP1	A087	Nature Medicine	32.621	29291351
IL6	A079	Nature Medicine	32.621	29291351
INS	A448	Nature Medicine	32.621	29291351
Ntn1	B827	Nature Medicine	32.621	24584118
EFNB2	E112	Nature Medicine	32.621	29058717
aMSH	A239	Cell Stem Cell	23.29	29681516
BRAK	B607	Cell Metabolism	20.565	30122557
IL10	A056	Cell Metabolism	20.565	27866837
IL12B	A058	Cell Metabolism	20.565	27866837
MCP1	A087	Cell Metabolism	20.565	27866837

(More information, please visit: www.cloud-clone.com)

Cloud-Clone Corp.

Original Manufacturer for Protein, Antibody, Assay kit and CRO service.

23603 W. Fernhurst Dr., Unit 2201, Katy, TX 77494, USA Tel: 001-832-538-0970 Toll free: 888-960-7402 (In the USA)

www.cloud-clone.com www.cloud-clone.us