

Stem cell



Monoclonal
Antibody

ELISA Kit

Polyclonal
Antibody

MaxPab[®]

Full-length
Protein

Partial-length
Protein

Assay Kit

siRNA /
Chimera

Antibody
Pair

Antibodies	1
Proteins	17
Peptides	23
Antibody Pairs for ELISA	24
Antibody Pairs for IP-WB	24
ELISA Kits	26
Stem Cell Culture Reagents	26

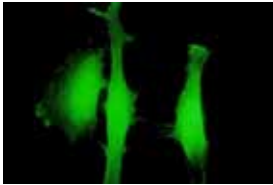
Abnova Corporation

www.abnova.com

Email: sales@abnova.com

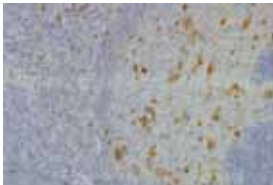
Address: 9F, No. 108, Jhouzih St., Neihu, Taipei 114, Taiwan

Tel: + 886 2 8751 1888 Fax: + 886 2 6602 1218



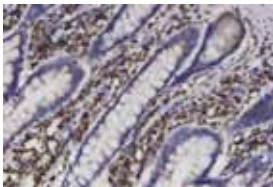
H00060509-B01P

Immunofluorescence of purified MaxPab antibody to AGLB5 on HeLa cell. [antibody concentration 10 ug/ml]



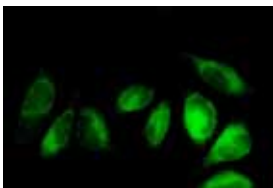
H00010327-M01

Immunoperoxidase of monoclonal antibody to AKR1A1 on formalin-fixed paraffin-embedded human tonsil. [antibody concentration 0.75 ug/ml]



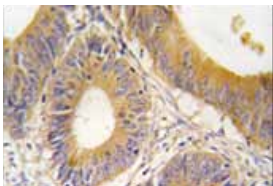
H00000231-M03

Immunoperoxidase of monoclonal antibody to AKR1B1 on formalin-fixed paraffin-embedded human small intestine. [antibody concentration 3 ug/ml]



H00000224-B01

Immunofluorescence of purified MaxPab antibody to ALDH3A2 on HeLa cell. [antibody concentration 10 ug/ml]



PAB2583

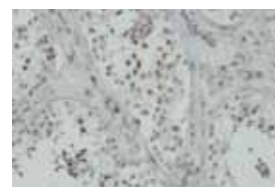
Immunoperoxidase staining of ALDOC polyclonal antibody on formalin-fixed paraffin-embedded human colon carcinoma tissue (Cat# PAB2583)

Antibodies

Cat. Num.	Product Name	Application
PAB17603	AASS polyclonal antibody	ELISA,WB-Ce
MAB2075	ACTA1 monoclonal antibody, clone 5C5.F8.C7	IHC-P
PAB11172	ACTA1 polyclonal antibody	IHC-P
H0000071-M01	ACTG1 monoclonal antibody (M01), clone 1G6	ELISA,PLA-Ce
PAB12510	ACTG1 polyclonal antibody	IP,WB-Ce
PAB18807	ACTG1 polyclonal antibody	ELISA,WB-Ce
H00000119-B01	ADD2 MaxPab mouse polyclonal antibody (B01)	Det Ab,WB-Tr
H00000119-D01	ADD2 MaxPab rabbit polyclonal antibody (D01)	Det Ab,IP,WB-Tr
PAB18059	ADD2 polyclonal antibody	ELISA,IF,WB-Ce
H00000119-B01P	ADD2 purified MaxPab mouse polyclonal antibody (B01P)	Det Ab,WB-Tr
H00000119-D01P	ADD2 purified MaxPab rabbit polyclonal antibody (D01P)	Det Ab,WB-Tr
H00000158-B01P	ADSL purified MaxPab mouse polyclonal antibody (B01P)	Det Ab,WB-Tr
H00000158-D01P	ADSL purified MaxPab rabbit polyclonal antibody (D01P)	Det Ab,WB-Ce,WB-Tr
H00060509-D01	AGBL5 MaxPab rabbit polyclonal antibody (D01)	Det Ab,IP
H00060509-B01P	AGBL5 purified MaxPab mouse polyclonal antibody (B01P)	Det Ab,IF,WB-Tr
H00009465-M01	AKAP7 monoclonal antibody (M01), clone 2B3	ELISA,WB-Re
H00009465-M13	AKAP7 monoclonal antibody (M13), clone 1F9	ELISA,S-ELISA,WB-Re
H00009465-D01P	AKAP7 purified MaxPab rabbit polyclonal antibody (D01P)	Det Ab,WB-Tr
PAB16575	AKIRIN1 polyclonal antibody	ELISA,WB-Ce
PAB16576	AKIRIN1 polyclonal antibody	ELISA,WB-Ti
H00010327-B01	AKR1A1 MaxPab mouse polyclonal antibody (B01)	Det Ab,WB-Ti,WB-Tr
H00010327-M01	AKR1A1 monoclonal antibody (M01), clone 1A11-2A4	ELISA,IHC-P,S-ELISA,WB-Ce,WB-Re,WB-Tr
PAB2579	AKR1A1 polyclonal antibody	ELISA,IHC-P,WB-Ce
PAB2580	AKR1A1 polyclonal antibody	ELISA,IHC-P,WB-Ce
PAB6212	AKR1A1 polyclonal antibody	ELISA,IHC-P,WB-Ti
PAB18832	AKR1A1 polyclonal antibody	ELISA,IHC-P,WB
H00010327-B01P	AKR1A1 purified MaxPab mouse polyclonal antibody (B01P)	Det Ab,WB-Ti,WB-Tr
H00000231-M03	AKR1B1 monoclonal antibody (M03), clone 2D12	ELISA,IHC-P,S-ELISA,WB-Re
MAB9984	AKR1B1 monoclonal antibody, clone 1	ELISA,WB-Ce
MAB9983	AKR1B1 monoclonal antibody, clone 19	ELISA,WB-Ce
MAB9985	AKR1B1 monoclonal antibody, clone 7	ELISA,WB-Ce
PAB2581	AKR1B1 polyclonal antibody	ELISA,IHC-P,WB-Ce
PAB2582	AKR1B1 polyclonal antibody	ELISA,IHC-P,WB-Ce
H00000231-A01	AKR1B1 polyclonal antibody (A01)	ELISA,WB-Re
H00000231-B01P	AKR1B1 purified MaxPab mouse polyclonal antibody (B01P)	Det Ab,WB-Ti,WB-Tr
H00000231-D02P	AKR1B1 purified MaxPab rabbit polyclonal antibody (D02P)	Det Ab,WB-Tr
H00000224-B01	ALDH3A2 MaxPab mouse polyclonal antibody (B01)	Det Ab,IF,WB-Ti,WB-Tr
PAB3126	ALDH3A2 polyclonal antibody	ELISA,IHC-P,WB-Ce
PAB16546	ALDH3A2 polyclonal antibody	ELISA,WB-Ti
H00000224-B01P	ALDH3A2 purified MaxPab mouse polyclonal antibody (B01P)	Det Ab,IF,WB-Ti,WB-Tr
H00000224-D01P	ALDH3A2 purified MaxPab rabbit polyclonal antibody (D01P)	Det Ab,WB-Ce,WB-Tr
H00000501-B01	ALDH7A1 MaxPab mouse polyclonal antibody (B01)	Det Ab,WB-Ti,WB-Tr
H00000501-B01P	ALDH7A1 purified MaxPab mouse polyclonal antibody (B01P)	Det Ab,WB-Ti,WB-Tr
H00000501-D01P	ALDH7A1 purified MaxPab rabbit polyclonal antibody (D01P)	Det Ab,WB-Tr
PAB2583	ALDOC polyclonal antibody	ELISA,IHC-P,WB-Ce
PAB8007	AMD1 polyclonal antibody	WB-Ti
H00000262-B01P	AMD1 purified MaxPab mouse polyclonal antibody (B01P)	Det Ab,WB-Tr
H00000353-D01	APRT MaxPab rabbit polyclonal antibody (D01)	Det Ab,IP,WB-Ce,WB-Tr
H00000353-B01P	APRT purified MaxPab mouse polyclonal antibody (B01P)	Det Ab,WB-Tr
H00000353-D01P	APRT purified MaxPab rabbit polyclonal antibody (D01P)	Det Ab,WB-Ce,WB-Tr
PAB6495	ARAP2 polyclonal antibody	ELISA
H00008623-B01	ASMTL MaxPab mouse polyclonal antibody (B01)	Det Ab,WB-Ti,WB-Tr
H00008623-D01	ASMTL MaxPab rabbit polyclonal antibody (D01)	Det Ab,IP,WB-Ti,WB-Tr
H00008623-D01P	ASMTL purified MaxPab rabbit polyclonal antibody (D01P)	Det Ab,WB-Ti,WB-Tr
H00000471-D01	ATIC MaxPab rabbit polyclonal antibody (D01)	Det Ab,IP,WB-Tr
MAB1824	ATIC monoclonal antibody, clone F38 P7 H9	IHC,WB-Ce
MAB7973	ATIC monoclonal antibody, clone F38P7H9	IHC-P,WB
H00000471-B01P	ATIC purified MaxPab mouse polyclonal antibody (B01P)	Det Ab,WB-Ti,WB-Tr
H00000471-D01P	ATIC purified MaxPab rabbit polyclonal antibody (D01P)	Det Ab,WB-Tr
H00000585-B01	BBS4 MaxPab mouse polyclonal antibody (B01)	Det Ab,WB-Tr
H00000585-D01	BBS4 MaxPab rabbit polyclonal antibody (D01)	Det Ab,IP,WB-Ti,WB-Tr
PAB2963	BBS4 polyclonal antibody	ELISA,WB-Ce
PAB19071	BBS4 polyclonal antibody	ELISA,WB-Ce
PAB19070	BBS4 polyclonal antibody	ELISA,WB-Ti
PAB18993	BBS4 polyclonal antibody	ELISA,WB-Ce

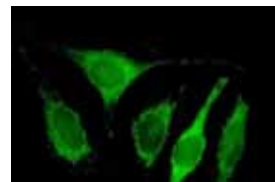
Antibodies

Cat. Num.	Product Name	Application
PAB18994	BBS4 polyclonal antibody	ELISA,WB-Ti
H00000585-B01P	BBS4 purified MaxPab mouse polyclonal antibody (B01P)	Det Ab,WB-Tr
H00000585-D01P	BBS4 purified MaxPab rabbit polyclonal antibody (D01P)	Det Ab,WB-Ti,WB-Tr
H00027241-D02P	BBS9 purified MaxPab rabbit polyclonal antibody (D02P)	Det Ab,WB-Tr
MAB0111	BEX1 monoclonal antibody, clone 9E1237.1	WB-Re
H00055839-M01	BM039 monoclonal antibody (M01), clone 4A5-1C11	ELISA,WB-Re
H00000689-M01	BTF3 monoclonal antibody (M01), clone 3C4-2E11	ELISA,S-ELISA,WB-Re,WB-Tr
H00055299-B01P	BXDC2 purified MaxPab mouse polyclonal antibody (B01P)	Det Ab,IF,WB-Tr
H00055299-D01P	BXDC2 purified MaxPab rabbit polyclonal antibody (D01P)	Det Ab,WB-Tr
H00029902-M01	C12orf24 monoclonal antibody (M01), clone 2G4-1A1	ELISA,IP,WB-Re,WB-Tr
H00029902-D01P	C12orf24 purified MaxPab rabbit polyclonal antibody (D01P)	Det Ab,WB-Tr
PAB16722	C13orf34 polyclonal antibody	ELISA,IHC,WB-Ti
PAB16727	C13orf34 polyclonal antibody	ELISA,IHC,WB-Ce
H00051187-M01	C15orf15 monoclonal antibody (M01), clone 2A10-1E5	ELISA,IF,IHC-P,WB-Re
H00065260-M01	C1orf163 monoclonal antibody (M01), clone 1G11-1C4	ELISA,WB-Re
H00079630-B01	C1orf54 MaxPab mouse polyclonal antibody (B01)	Det Ab,WB-Tr
H00079630-B01P	C1orf54 purified MaxPab mouse polyclonal antibody (B01P)	Det Ab,WB-Tr
H00000708-D01	C1QBP MaxPab rabbit polyclonal antibody (D01)	Det Ab,WB-Ce,WB-Tr
H00000708-M01	C1QBP monoclonal antibody (M01), clone 1F3	ELISA,S-ELISA
PAB3523	C1QBP polyclonal antibody	ELISA,WB-Ce
PAB3524	C1QBP polyclonal antibody	ELISA,WB-Ce
H00000708-A01	C1QBP polyclonal antibody (A01)	ELISA,WB-Ce,WB-Re
H00000708-B01P	C1QBP purified MaxPab mouse polyclonal antibody (B01P)	Det Ab,IF,WB-Ce,WB-Ti,WB-Tr
H00025966-B01	C21orf25 MaxPab mouse polyclonal antibody (B01)	Det Ab,WB-Tr
H00025966-B01P	C2CD2 purified MaxPab mouse polyclonal antibody (B01P)	Det Ab,WB-Tr
H00025966-D01P	C2CD2 purified MaxPab rabbit polyclonal antibody (D01P)	Det Ab,WB-Tr
H00079568-D01P	C2orf47 purified MaxPab rabbit polyclonal antibody (D01P)	Det Ab,WB-Tr
H00055319-D01	C4orf43 MaxPab rabbit polyclonal antibody (D01)	Det Ab,IP,WB-Ti,WB-Tr
H00055319-M08	C4orf43 monoclonal antibody (M08), clone 4A6	ELISA,IHC-P,S-ELISA,WB-Re,WB-Tr
H00055319-D01P	C4orf43 purified MaxPab rabbit polyclonal antibody (D01P)	Det Ab,WB-Ti,WB-Tr
H00055744-B01P	C7orf44 purified MaxPab mouse polyclonal antibody (B01P)	Det Ab,WB-Ti,WB-Tr
H00065265-B01	C8orf33 MaxPab mouse polyclonal antibody (B01)	Det Ab,IF,WB-Tr
H00065265-B01P	C8orf33 purified MaxPab mouse polyclonal antibody (B01P)	Det Ab,IF,WB-Tr
H00065265-D01P	C8orf33 purified MaxPab rabbit polyclonal antibody (D01P)	Det Ab,WB-Tr
H00000793-B01	CALB1 MaxPab mouse polyclonal antibody (B01)	Det Ab,WB-Tr
MAB2709	CALB1 monoclonal antibody, clone AF2E5	ELISA,WB
PAB11204	CALB1 polyclonal antibody	IHC-P
H00000813-B01P	CALU purified MaxPab mouse polyclonal antibody (B01P)	Det Ab,IF,WB-Tr
H00023624-M01	CBLC monoclonal antibody (M01), clone 3F10	ELISA,WB-Re,WB-Tr
PAB1697	CBLC polyclonal antibody	ELISA,IHC-P,WB-Ce
PAB1698	CBLC polyclonal antibody	ELISA,IHC-P,WB-Ce
PAB9985	CBLC polyclonal antibody	ELISA,IHC-P,IP,WB
H00023624-D01P	CBLC purified MaxPab rabbit polyclonal antibody (D01P)	Det Ab,WB-Tr
H00000873-D01	CBR1 MaxPab rabbit polyclonal antibody (D01)	Det Ab,IP,WB-Ti,WB-Tr
H00000873-M01	CBR1 monoclonal antibody (M01), clone 4G11-1C7	ELISA,S-ELISA,WB-Re
H00000873-M02	CBR1 monoclonal antibody (M02), clone 4D12-1G8	ELISA,S-ELISA,WB-Ce,WB-Re
PAB2964	CBR1 polyclonal antibody	ELISA,IHC-P,WB-Ce
PAB6202	CBR1 polyclonal antibody	ELISA,IHC-P,WB-Ti
H00000873-B01P	CBR1 purified MaxPab mouse polyclonal antibody (B01P)	Det Ab,WB-Ce,WB-Ti,WB-Tr
H00007203-B01	CCT3 MaxPab mouse polyclonal antibody (B01)	Det Ab,WB-Tr
PAB14393	CCT3 polyclonal antibody	ELISA,WB-Ti
H00022948-M01	CCT5 monoclonal antibody (M01), clone 4E5-4B1	ELISA,IF,IHC-P,S-ELISA,WB-Ce,WB-Re
H00000934-M04	CD24 monoclonal antibody (M04), clone 1C4	ELISA,S-ELISA,WB-Re
PAB6234	CDT1 polyclonal antibody	ELISA,WB-Ti
H00055839-D01	CENPN MaxPab rabbit polyclonal antibody (D01)	Det Ab,IP,WB-Tr
H00055839-D01P	CENPN purified MaxPab rabbit polyclonal antibody (D01P)	Det Ab,WB-Tr
H00009350-D01	CER1 MaxPab rabbit polyclonal antibody (D01)	Det Ab,IP,WB-Ce,WB-Ti,WB-Tr
H00009350-M04	CER1 monoclonal antibody (M04), clone 3E11	ELISA,IP,S-ELISA,WB-Re
H00009350-M12	CER1 monoclonal antibody (M12), clone 4D5	ELISA,S-ELISA,WB-Re
H00009350-B01P	CER1 purified MaxPab mouse polyclonal antibody (B01P)	Det Ab,WB-Tr
H00009350-D01P	CER1 purified MaxPab rabbit polyclonal antibody (D01P)	Det Ab,WB-Ce,WB-Ti,WB-Tr
H00026586-M04	CKAP2 monoclonal antibody (M04), clone 3H1	ELISA,IHC-P,S-ELISA,WB-Re
H00026586-M08	CKAP2 monoclonal antibody (M08), clone 3B9	ELISA,S-ELISA,WB-Re
H00026586-A01	CKAP2 polyclonal antibody (A01)	ELISA,WB-Re
H00001159-B01	CKMT1B MaxPab mouse polyclonal antibody (B01)	Det Ab,WB-Tr



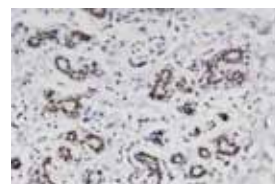
H00051187-M01

Immunoperoxidase of monoclonal antibody to C15orf15 on formalin-fixed paraffin-embedded human testis. [antibody concentration 1 ug/ml]



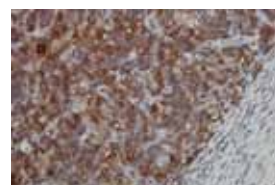
H00000708-B01P

Immunofluorescence of purified MaxPab antibody to C1QBP on HeLa cell. [antibody concentration 10 ug/ml]



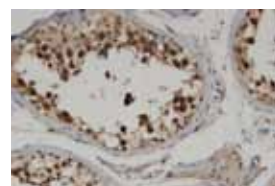
H00055319-M08

Immunoperoxidase of monoclonal antibody to C4orf43 on formalin-fixed paraffin-embedded human breast. [antibody concentration 3 ug/ml]



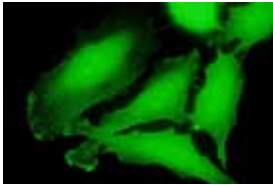
H00022948-M01

Immunoperoxidase of monoclonal antibody to CCT5 on formalin-fixed paraffin-embedded human lymphoma tissue. [antibody concentration 1ug/ml]

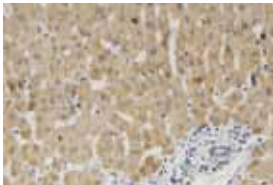


H00026586-M04

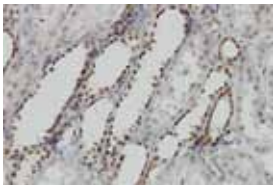
Immunoperoxidase of monoclonal antibody to CKAP2 on formalin-embedded paraffin-embedded human testis. [antibody concentration 3 ug/ml]

**H00051379-B01**

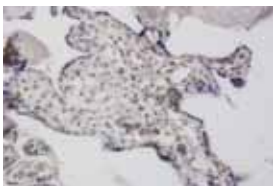
Immunofluorescence of purified MaxPab antibody to CRLF3 on HeLa cell. [antibody concentration 10 ug/ml]

**H00001528-M06**

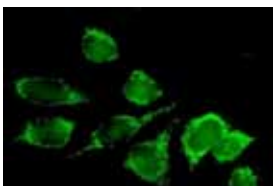
Immunoperoxidase of monoclonal antibody to CYB5A on formalin-fixed paraffin-embedded human liver. [antibody concentration 3 ug/ml]

**H00028960-M02**

Immunoperoxidase of monoclonal antibody to DCPS on formalin-fixed paraffin-embedded human kidney. [antibody concentration 1.5 ug/ml]

**H00028960-M03**

Immunoperoxidase of monoclonal antibody to DCPS on formalin-fixed paraffin-embedded human placenta. [antibody concentration 3 ug/ml]

**H00001737-B01P**

Immunofluorescence of purified MaxPab antibody to DLAT on HeLa cell. [antibody concentration 10 ug/ml]

Antibodies

Cat. Num.	Product Name	Application
H00001159-D01	CKMT1B MaxPab rabbit polyclonal antibody (D01)	Det Ab,IP
H00001159-M04	CKMT1B monoclonal antibody (M04), clone 2C8	ELISA,RNAi-Ab,S-ELISA,WB-Ce,WB-Re,WB-Tr
H00001159-M16	CKMT1B monoclonal antibody (M16), clone 2C9	ELISA,S-ELISA,WB-Ce,WB-Re
H00001159-A01	CKMT1B polyclonal antibody (A01)	ELISA,WB-Ce,WB-Re
PAB17672	CLDN6 polyclonal antibody	ELISA,IF,IHC-P,WB-Ce
MAB7558	CRABP1 monoclonal antibody, clone AT1A1	ELISA,WB-Ti
H00001382-M01	CRABP2 monoclonal antibody (M01), clone 4F2	ELISA,S-ELISA,WB-Re,WB-Tr
MAB10007	CRABP2 monoclonal antibody, clone AT2E11	ELISA,WB-Ce,WB-Ti
H00001382-B01P	CRABP2 purified MaxPab mouse polyclonal antibody (B01P)	Det Ab,IF,WB-Tr
H00001382-D01P	CRABP2 purified MaxPab rabbit polyclonal antibody (D01P)	Det Ab,WB-Tr
H00001389-B01	CREBL2 MaxPab mouse polyclonal antibody (B01)	Det Ab,WB-Tr
H00001389-A01	CREBL2 polyclonal antibody (A01)	ELISA,WB-Re
H00001389-B01P	CREBL2 purified MaxPab mouse polyclonal antibody (B01P)	Det Ab,WB-Tr
H00001389-D01P	CREBL2 purified MaxPab rabbit polyclonal antibody (D01P)	Det Ab,WB-Tr
H00051379-B01	CRLF3 MaxPab mouse polyclonal antibody (B01)	Det Ab,IF,WB-Ce,WB-Ti,WB-Tr
H00051379-D01	CRLF3 MaxPab rabbit polyclonal antibody (D01)	Det Ab,IP,WB-Ti,WB-Tr
H00051379-B01P	CRLF3 purified MaxPab mouse polyclonal antibody (B01P)	Det Ab,IF,WB-Ce,WB-Ti,WB-Tr
H00051379-D01P	CRLF3 purified MaxPab rabbit polyclonal antibody (D01P)	Det Ab,WB-Ti,WB-Tr
H00056474-D01P	CTPS2 purified MaxPab rabbit polyclonal antibody (D01P)	Det Ab,WB-Tr
H00001525-B01P	CXADR purified MaxPab mouse polyclonal antibody (B01P)	Det Ab,WB-Tr
H00001525-D01P	CXADR purified MaxPab rabbit polyclonal antibody (D01P)	Det Ab,WB-Ce,WB-Ti,WB-Tr
H00001528-B01	CYB5A MaxPab mouse polyclonal antibody (B01)	Det Ab,WB-Tr
H00001528-M05	CYB5A monoclonal antibody (M05), clone 4C2	ELISA,IHC-P,S-ELISA,WB-Re
H00001528-M06	CYB5A monoclonal antibody (M06), clone 1A8	ELISA,IHC-P,IP,S-ELISA,WB-Re,WB-Tr
H00001528-A01	CYB5A polyclonal antibody (A01)	ELISA,WB-Re
MAB1857	CYP26A1 monoclonal antibody, clone F27 P6 A1	ELISA,IHC-P,WB-Re
PAB2601	CYP26A1 polyclonal antibody	ELISA,WB-Ce
H00001592-B01P	CYP26A1 purified MaxPab mouse polyclonal antibody (B01P)	Det Ab,WB-Tr
H00001593-D01	CYP27A1 MaxPab rabbit polyclonal antibody (D01)	Det Ab,IP,WB-Tr
H00001593-B01P	CYP27A1 purified MaxPab mouse polyclonal antibody (B01P)	Det Ab,WB-Ti,WB-Tr
H00001593-D01P	CYP27A1 purified MaxPab rabbit polyclonal antibody (D01P)	Det Ab,WB-Tr
H00001629-B01P	DBT purified MaxPab mouse polyclonal antibody (B01P)	Det Ab,WB-Ce,WB-Ti,WB-Tr
H00001629-D01P	DBT purified MaxPab rabbit polyclonal antibody (D01P)	Det Ab,WB-Ce,WB-Ti,WB-Tr
H00028960-M02	DCPS monoclonal antibody (M02), clone 1G4	ELISA,IF,IHC-P,S-ELISA,WB-Ce,WB-Re
H00028960-M03	DCPS monoclonal antibody (M03), clone 3E5	ELISA,IHC-P,S-ELISA,WB-Ce,WB-Re
H00028960-D01P	DCPS purified MaxPab rabbit polyclonal antibody (D01P)	Det Ab,WB-Ti,WB-Tr
H00001652-M01	DDT monoclonal antibody (M01), clone 1G1	ELISA,S-ELISA,WB-Re,WB-Tr
H00001652-M04	DDT monoclonal antibody (M04), clone 1D5	ELISA,IP,S-ELISA
PAB19532	DDT polyclonal antibody	IHC-P,WB-Ti
H00001652-B01P	DDT purified MaxPab mouse polyclonal antibody (B01P)	Det Ab,WB-Tr
H00001652-D01P	DDT purified MaxPab rabbit polyclonal antibody (D01P)	Det Ab,WB-Ti,WB-Tr
H00079154-D01P	DHRS11 purified MaxPab rabbit polyclonal antibody (D01P)	Det Ab,WB-Ti,WB-Tr
H00079154-D02P	DHRS11 purified MaxPab rabbit polyclonal antibody (D02P)	Det Ab,WB-Tr
PAB10201	DIAPH2 polyclonal antibody	ELISA,IP,WB-Ce
H00001737-B01P	DLAT purified MaxPab mouse polyclonal antibody (B01P)	Det Ab,IF,WB-Ce,WB-Ti,WB-Tr
H00001737-D01P	DLAT purified MaxPab rabbit polyclonal antibody (D01P)	Det Ab,WB-Ce,WB-Ti,WB-Tr
H00023549-B01	DNPEP MaxPab mouse polyclonal antibody (B01)	Det Ab,WB-Tr
H00023549-M01	DNPEP monoclonal antibody (M01), clone 2F9-3A7	ELISA,IF,WB-Ce,WB-Re
H00023549-B01P	DNPEP purified MaxPab mouse polyclonal antibody (B01P)	Det Ab,WB-Tr
H00023549-D01P	DNPEP purified MaxPab rabbit polyclonal antibody (D01P)	Det Ab,WB-Tr
H00055211-B01	DPPA4 MaxPab mouse polyclonal antibody (B01)	Det Ab,WB-Tr
PAB3086	DPPA4 polyclonal antibody	ELISA,IHC-P,WB-Ce
H00055211-B01P	DPPA4 purified MaxPab mouse polyclonal antibody (B01P)	Det Ab,WB-Tr
H00055211-B02P	DPPA4 purified MaxPab mouse polyclonal antibody (B02P)	Det Ab,IF,WB-Ti,WB-Tr
H00055211-D01P	DPPA4 purified MaxPab rabbit polyclonal antibody (D01P)	Det Ab,WB-Tr
H00001810-B01	DR1 MaxPab mouse polyclonal antibody (B01)	Det Ab,IF,WB-Ce,WB-Tr
H00051514-D01P	DTL purified MaxPab rabbit polyclonal antibody (D01P)	Det Ab,WB-Tr
H00011062-D01P	DUS4L purified MaxPab rabbit polyclonal antibody (D01P)	Det Ab,WB-Tr
H00009521-B01P	EEF1E1 purified MaxPab mouse polyclonal antibody (B01P)	Det Ab,IF,WB-Ce,WB-Tr
PAB17280	EEF2 polyclonal antibody	IHC-P,WB-Ce
PAB13032	ELOVL6 polyclonal antibody	IHC-P,WB-Ti
H00058478-D01P	ENOPH1 purified MaxPab rabbit polyclonal antibody (D01P)	Det Ab,WB-Ti,WB-Tr
PAB2965	EPRS polyclonal antibody	ELISA,IHC-P,WB-Ce
H00051575-B01	ESF1 MaxPab mouse polyclonal antibody (B01)	Det Ab,WB-Tr
H00051575-D01P	ESF1 purified MaxPab rabbit polyclonal antibody (D01P)	Det Ab,WB-Tr

Antibodies

Cat. Num.	Product Name	Application
H00002114-B01	ETS2 MaxPab mouse polyclonal antibody (B01)	Det Ab,WB-Tr
H00002114-A01	ETS2 polyclonal antibody (A01)	ELISA,WB-Re
H00002114-B01P	ETS2 purified MaxPab mouse polyclonal antibody (B01P)	Det Ab,WB-Tr
H00002115-M01	ETV1 monoclonal antibody (M01), clone 2A8	ELISA,S-ELISA,WB-Re,WB-Ti
H00002115-M02	ETV1 monoclonal antibody (M02), clone 4C12	ELISA,S-ELISA,WB-Re,WB-Ti
PAB11525	ETV1 polyclonal antibody	ELISA
H00002115-A01	ETV1 polyclonal antibody (A01)	ELISA,WB-Re
H00002135-B01	EXTL2 MaxPab mouse polyclonal antibody (B01)	Det Ab,WB-Tr
H00002135-B02	EXTL2 MaxPab mouse polyclonal antibody (B02)	Det Ab,WB-Tr
H00002135-B01P	EXTL2 purified MaxPab mouse polyclonal antibody (B01P)	Det Ab,WB-Tr
H00002135-B02P	EXTL2 purified MaxPab mouse polyclonal antibody (B02P)	Det Ab,WB-Tr
H00002135-D01P	EXTL2 purified MaxPab rabbit polyclonal antibody (D01P)	Det Ab,WB-Tr
H00002135-D02P	EXTL2 purified MaxPab rabbit polyclonal antibody (D02P)	Det Ab,WB-Tr
H00002171-B01	FABP5 MaxPab mouse polyclonal antibody (B01)	Det Ab,WB-Tr
H00002171-B02	FABP5 MaxPab mouse polyclonal antibody (B02)	Det Ab,WB-Tr
H00002171-B02P	FABP5 purified MaxPab mouse polyclonal antibody (B02P)	Det Ab,WB-Tr
H00002171-D01P	FABP5 purified MaxPab rabbit polyclonal antibody (D01P)	Det Ab,WB-Ti,WB-Tr
H00081558-D01P	FAM117A purified MaxPab rabbit polyclonal antibody (D01P)	Det Ab,WB-Tr
H00054478-D01P	FAM64A purified MaxPab rabbit polyclonal antibody (D01P)	Det Ab,WB-Tr
H00054478-D02P	FAM64A purified MaxPab rabbit polyclonal antibody (D02P)	Det Ab,WB-Tr
H00002281-M01	FKBP1B monoclonal antibody (M01), clone 4H5-1B6	ELISA,S-ELISA,WB-Re,WB-Tr
H00002281-A01	FKBP1B polyclonal antibody (A01)	ELISA,WB-Re
H00002287-B01	FKBP3 MaxPab mouse polyclonal antibody (B01)	Det Ab,IF,WB-Ti,WB-Tr
H00002287-D01P	FKBP3 purified MaxPab rabbit polyclonal antibody (D01P)	Det Ab,WB-Ti,WB-Tr
H00002288-B01	FKBP4 MaxPab mouse polyclonal antibody (B01)	Det Ab,IF,IHC-P,WB-Ce,WB-Ti,WB-Tr
H00002288-D01	FKBP4 MaxPab rabbit polyclonal antibody (D01)	Det Ab,IP,WB-Ce,WB-Ti,WB-Tr
H00002288-M01	FKBP4 monoclonal antibody (M01), clone 5C11	ELISA,IHC-P,IP,S-ELISA,WB-Ce,WB-Re
MAB3587	FKBP4 monoclonal antibody, clone AT4D3	ELISA,WB-Ce
PAB11467	FKBP4 polyclonal antibody	ELISA,WB-Ti
H00002288-A03	FKBP4 polyclonal antibody (A03)	ELISA,WB-Re
H00002288-B01P	FKBP4 purified MaxPab mouse polyclonal antibody (B01P)	Det Ab,IF,IHC-P,WB-Ce,WB-Ti,WB-Tr
H00055744-B01	FLJ10803 MaxPab mouse polyclonal antibody (B01)	Det Ab,WB-Ti,WB-Tr
H00055319-B01P	FLJ11184 purified MaxPab mouse polyclonal antibody (B01P)	Det Ab,IF,WB-Ce,WB-Tr
H00064795-B01	FLJ13910 MaxPab mouse polyclonal antibody (B01)	Det Ab,WB-Tr
H00055011-B01	FLJ20643 MaxPab mouse polyclonal antibody (B01)	Det Ab,WB-Ti,WB-Tr
H00055011-M01	FLJ20643 monoclonal antibody (M01), clone 4F5-1E10	ELISA,IP,WB-Re,WB-Tr
H00055011-M02	FLJ20643 monoclonal antibody (M02), clone 4H7	ELISA,S-ELISA,WB-Ce,WB-Re
H00055011-M03	FLJ20643 monoclonal antibody (M03), clone M1	ELISA,WB-Re
H00055011-M04	FLJ20643 monoclonal antibody (M04), clone 1G6	ELISA,IF,S-ELISA,WB-Ce,WB-Re
H00055011-M05	FLJ20643 monoclonal antibody (M05), clone 1E6	ELISA,WB-Ce,WB-Re
H00055011-M06	FLJ20643 monoclonal antibody (M06), clone 1E8	ELISA,IHC-P,S-ELISA,WB-Ce,WB-Re
H00055011-M07	FLJ20643 monoclonal antibody (M07), clone M2	ELISA,S-ELISA,WB-Re
H00079675-A01	FLJ21901 polyclonal antibody (A01)	ELISA,WB-Ce,WB-Re
H00079887-B01	FLJ22662 MaxPab mouse polyclonal antibody (B01)	Det Ab,WB-Tr
H00079887-B01P	FLJ22662 purified MaxPab mouse polyclonal antibody (B01P)	Det Ab,WB-Tr
H00079887-D01P	FLJ22662 purified MaxPab rabbit polyclonal antibody (D01P)	Det Ab,WB-Tr
H00003169-M01	FOXA1 monoclonal antibody (M01), clone 2D7	ELISA,IHC-P,RNAi-Ab,S-ELISA,WB-Ce,WB-Re,WB-Tr
H00003169-M02	FOXA1 monoclonal antibody (M02), clone 1B1	ELISA,IF,IHC-P,S-ELISA,WB-Ce,WB-Re,WB-Tr
H00003169-M03	FOXA1 monoclonal antibody (M03), clone 4F6	ELISA,IF,IHC-P,S-ELISA,WB-Ce,WB-Re
H00003169-M04	FOXA1 monoclonal antibody (M04), clone 6B12	ELISA,S-ELISA,WB-Ce,WB-Re
H00003169-M05	FOXA1 monoclonal antibody (M05), clone 3C1	ELISA,IF,IHC-P,WB-Ce,WB-Re
H00003169-M07	FOXA1 monoclonal antibody (M07), clone 1G10	ELISA,S-ELISA,WB-Re,WB-Tr
MAB10042	FOXA1 monoclonal antibody, clone SP88	IHC-P
PAB6418	FOXA1 polyclonal antibody	ChIP,ELISA,IHC-P,WB-Ce
H00003169-A01	FOXA1 polyclonal antibody (A01)	ELISA,WB-Re,WB-Ti
PAB14593	FOXO3 polyclonal antibody	ELISA
PAB6433	FOXH1 polyclonal antibody	ELISA
H00008928-D01P	FOXH1 purified MaxPab rabbit polyclonal antibody (D01P)	Det Ab,WB-Tr
H00079187-B01	FSD1 MaxPab mouse polyclonal antibody (B01)	Det Ab,WB-Ce,WB-Tr
H00079187-D01	FSD1 MaxPab rabbit polyclonal antibody (D01)	Det Ab,IP,WB-Tr
H00079187-M01	FSD1 monoclonal antibody (M01), clone 1G3	ELISA,IP,S-ELISA
PAB6959	FSD1 polyclonal antibody	ELISA,WB-Ti
H00079187-B01P	FSD1 purified MaxPab mouse polyclonal antibody (B01P)	Det Ab,WB-Ce,WB-Tr
H00079187-D01P	FSD1 purified MaxPab rabbit polyclonal antibody (D01P)	Det Ab,WB-Tr
H00079695-B01	GALNT12 MaxPab mouse polyclonal antibody (B01)	Det Ab,WB-Tr



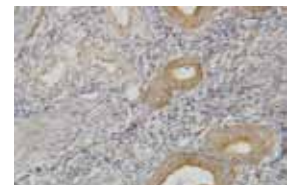
H00002288-B01

Immunoperoxidase of purified MaxPab antibody to FKBP4 on formalin-fixed paraffin-embedded human esophagus. [antibody concentration 3 ug/ml]



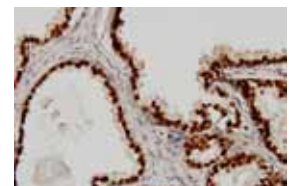
H00002288-M01

Immunoperoxidase of monoclonal antibody to FKBP4 on formalin-fixed paraffin-embedded human uterine cervix. [antibody concentration 0.5 ug/ml]



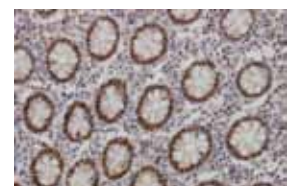
H00055011-M06

Immunoperoxidase of monoclonal antibody to FLJ20643 on formalin-fixed paraffin-embedded human endometrium. [antibody concentration 3 ug/ml]



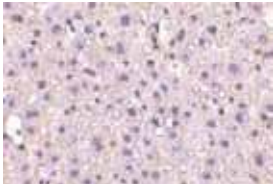
H00003169-M01

Immunoperoxidase of monoclonal antibody to FOXA1 on formalin-fixed paraffin-embedded human prostate. [antibody concentration 3ug/ml]



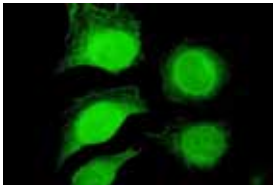
H00003169-M03

Immunoperoxidase of monoclonal antibody to FOXA1 on formalin-fixed paraffin-embedded human colon. [antibody concentration 3 ug/ml]



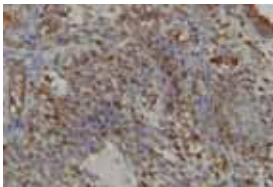
PAB10014

Immunohistochemical staining using GAPDH polyclonal antibody (Cat # PAB10014) at 10 ug/mL shows detection of GAPDH in human liver tissue. Tissue was fixed in 4% paraformaldehyde using a section 4.2 um thick.



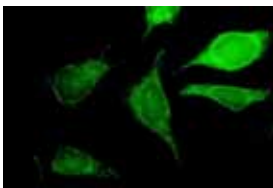
H00002597-B01P

Immunofluorescence of purified MaxPab antibody to GAPDH on HeLa cell. [antibody concentration 10 ug/ml]



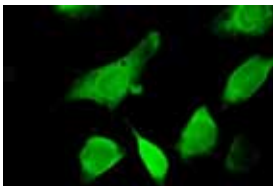
H00002618-M01

Immunoperoxidase of monoclonal antibody to GART on formalin-fixed paraffin-embedded human endometrium tissue. [antibody concentration 2ug/ml]



H00002639-B01

Immunofluorescence of purified MaxPab antibody to GCDH on HeLa cell. [antibody concentration 10 ug/ml]



H00079833-B01

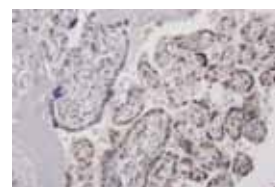
Immunofluorescence of purified MaxPab antibody to GEMIN6 on HeLa cell. [antibody concentration 10 ug/ml]

Antibodies

Cat. Num.	Product Name	Application
H00079695-B02	GALNT12 MaxPab mouse polyclonal antibody (B02)	Det Ab,WB-Tr
H00079695-B01P	GALNT12 purified MaxPab mouse polyclonal antibody (B01P)	Det Ab,WB-Tr
H00079695-D01P	GALNT12 purified MaxPab rabbit polyclonal antibody (D01P)	Det Ab,WB-Tr
H00079695-D02P	GALNT12 purified MaxPab rabbit polyclonal antibody (D02P)	Det Ab,WB-Ce,WB-Tr
H00002597-M01	GAPDH monoclonal antibody (M01), clone 3C2	ELISA,IP,S-ELISA,WB-Ce,WB-Re,WB-Tr
H00002597-M01A	GAPDH monoclonal antibody (M01A), clone 3C2	ELISA,WB-Ce,WB-Re
H00002597-M03	GAPDH monoclonal antibody (M03), clone 1G5	ELISA,S-ELISA,WB-Ce,WB-Re
MAB2344	GAPDH monoclonal antibody, clone 2D4A7	ELISA,WB-Ce,WB-Ti
MAB0738	GAPDH monoclonal antibody, clone 4A1	WB-Ce
MAB0694	GAPDH monoclonal antibody, clone 7B	ELISA,IP,WB-Ce
MAB0687	GAPDH monoclonal antibody, clone 8C2	ELISA,IP,WB-Ce
MAB8701	GAPDH monoclonal antibody, clone AT8G4	ELISA,IF,WB-Ce
PAB0907	GAPDH polyclonal antibody	WB-Ce
PAB1187	GAPDH polyclonal antibody	WB
PAB1195	GAPDH polyclonal antibody	IP,WB
PAB6637	GAPDH polyclonal antibody	ELISA,WB-Ce
PAB6936	GAPDH polyclonal antibody	ELISA,WB-Ti
PAB10014	GAPDH polyclonal antibody	ELISA,IF,IHC-P,WB-Ce
PAB13195	GAPDH polyclonal antibody	ICC,IHC,WB-Ce
PAB17013	GAPDH polyclonal antibody	IF,IHC,WB
PAB0645	GAPDH polyclonal antibody	ELISA,WB
PAB18293	GAPDH polyclonal antibody	ICC,IHC-Fr,IHC-P,WB
H00002597-A01	GAPDH polyclonal antibody (A01)	ELISA,WB-Re
H00002597-B01P	GAPDH purified MaxPab mouse polyclonal antibody (B01P)	Det Ab,IF,WB-Ti,WB-Tr
H00002618-D01	GART MaxPab rabbit polyclonal antibody (D01)	Det Ab,IP,WB-Ti,WB-Tr
H00002618-M01	GART monoclonal antibody (M01), clone 4D6-1D5	ELISA,IF,IHC-P,IP,S-ELISA,WB-Ce,WB-Re,WB-Tr
H00002618-B01P	GART purified MaxPab mouse polyclonal antibody (B01P)	Det Ab,WB-Ce,WB-Ti,WB-Tr
H00002623-B01	GATA1 MaxPab mouse polyclonal antibody (B01)	Det Ab,IF,WB-Tr
PAB2480	GATA4 polyclonal antibody	ELISA,WB-Ce,WB-Tr
H00002627-A01	GATA6 polyclonal antibody (A01)	ELISA,WB-Re
H00002639-B01	GCDH MaxPab mouse polyclonal antibody (B01)	Det Ab,IF,WB-Ti,WB-Tr
H00002639-B01P	GCDH purified MaxPab mouse polyclonal antibody (B01P)	Det Ab,IF,WB-Ti,WB-Tr
H00002639-D01P	GCDH purified MaxPab rabbit polyclonal antibody (D01P)	Det Ab,WB-Ti,WB-Tr
H00079833-B01	GEMIN6 MaxPab mouse polyclonal antibody (B01)	Det Ab,IF,WB-Ce,WB-Tr
H00079833-M08	GEMIN6 monoclonal antibody (M08), clone 3D2	ELISA,S-ELISA,WB-Re
H00079833-B01P	GEMIN6 purified MaxPab mouse polyclonal antibody (B01P)	Det Ab,IF,WB-Ce,WB-Tr
H00079833-D01P	GEMIN6 purified MaxPab rabbit polyclonal antibody (D01P)	Det Ab,WB-Ti,WB-Tr
H00009945-B01P	GFPT2 purified MaxPab mouse polyclonal antibody (B01P)	Det Ab,WB-Tr
H00009945-D01P	GFPT2 purified MaxPab rabbit polyclonal antibody (D01P)	Det Ab,WB-Tr
H00009837-D01	GINS1 MaxPab rabbit polyclonal antibody (D01)	Det Ab,IP,WB-Tr
H00009837-B01P	GINS1 purified MaxPab mouse polyclonal antibody (B01P)	Det Ab,WB-Tr
H00009837-D01P	GINS1 purified MaxPab rabbit polyclonal antibody (D01P)	Det Ab,WB-Tr
H00009837-D02P	GINS1 purified MaxPab rabbit polyclonal antibody (D02P)	Det Ab,WB-Tr
H00002739-D01	GLO1 MaxPab rabbit polyclonal antibody (D01)	Det Ab,IP,WB-Tr
H00002739-M01	GLO1 monoclonal antibody (M01), clone 4C12	ELISA
MAB9980	GLO1 monoclonal antibody, clone 14	ELISA,WB-Ce
MAB9981	GLO1 monoclonal antibody, clone 2	ELISA,WB-Ce
MAB7193	GLO1 monoclonal antibody, clone Glo1a	ELISA,ICC,IF,WB-Ce
H00002739-A01	GLO1 polyclonal antibody (A01)	ELISA,WB-Ce,WB-Re
H00002739-D01P	GLO1 purified MaxPab rabbit polyclonal antibody (D01P)	Det Ab,WB-Tr
H00002762-D01P	GMDS purified MaxPab rabbit polyclonal antibody (D01P)	Det Ab,WB-Tr
H00002762-D02P	GMDS purified MaxPab rabbit polyclonal antibody (D02P)	Det Ab,WB-Ti,WB-Tr
PAB9520	GNB2L1 polyclonal antibody	WB
PAB9521	GNB2L1 polyclonal antibody	WB-Ce
H00064388-D01	GREM2 MaxPab rabbit polyclonal antibody (D01)	Det Ab,IP
H00064388-M02	GREM2 monoclonal antibody (M02), clone 4D9	ELISA
H00064388-B01P	GREM2 purified MaxPab mouse polyclonal antibody (B01P)	Det Ab,WB-Tr
H00002960-B01	GTF2E1 MaxPab mouse polyclonal antibody (B01)	Det Ab,IF,WB-Tr
H00002960-D01	GTF2E1 MaxPab rabbit polyclonal antibody (D01)	Det Ab,IP,WB-Tr
H00002960-M07A	GTF2E1 monoclonal antibody (M07A), clone 1E12	ELISA
H00002960-A01	GTF2E1 polyclonal antibody (A01)	ELISA,WB-Re
H00002960-B01P	GTF2E1 purified MaxPab mouse polyclonal antibody (B01P)	Det Ab,IF,WB-Tr
H00002960-D01P	GTF2E1 purified MaxPab rabbit polyclonal antibody (D01P)	Det Ab,WB-Tr
H00002966-B01	GTF2H2 MaxPab mouse polyclonal antibody (B01)	Det Ab,IF,WB-Ti,WB-Tr
H00002966-D01	GTF2H2 MaxPab rabbit polyclonal antibody (D01)	Det Ab,IP,WB-Tr

Antibodies

Cat. Num.	Product Name	Application
H00002966-B01P	GTF2H2 purified MaxPab mouse polyclonal antibody (B01P)	Det Ab,IF,WB-Ti,WB-Tr
H00002966-D01P	GTF2H2 purified MaxPab rabbit polyclonal antibody (D01P)	Det Ab,WB-Tr
H00010542-M02A	HBXIP monoclonal antibody (M02A), clone 3D3	ELISA,WB-Re
H00010542-M12	HBXIP monoclonal antibody (M12), clone 4G1	ELISA,S-ELISA,WB-Re,WB-Tr
H00010542-A01	HBXIP polyclonal antibody (A01)	ELISA,WB-Re
H00010542-D02P	HBXIP purified MaxPab rabbit polyclonal antibody (D02P)	Det Ab,WB-Tr
PAB0002	HDAC2 polyclonal antibody	IP,WB-Ce,WB-Ti
PAB2328	HDAC2 polyclonal antibody	ELISA,WB-Ce
PAB5383	HDAC2 polyclonal antibody	WB-Ce
PAB8750	HDAC2 polyclonal antibody	ICC,WB
PAB11677	HDAC2 polyclonal antibody	IHC-P
PAB19090	HDAC2 polyclonal antibody	WB-Ce
PAB18475	HDAC2 polyclonal antibody	ELISA,IHC-P,WB-Ce
H00003066-D01P	HDAC2 purified MaxPab rabbit polyclonal antibody (D01P)	Det Ab,PLA-Ce,WB-Tr
H00003070-B01	HELLS MaxPab mouse polyclonal antibody (B01)	Det Ab,IF,WB-Tr
H00003070-M01	HELLS monoclonal antibody (M01), clone 1D10	ELISA,WB-Re
H00003070-M04	HELLS monoclonal antibody (M04), clone 2G10	ELISA,WB-Re
H00003070-B01P	HELLS purified MaxPab mouse polyclonal antibody (B01P)	Det Ab,IF,WB-Tr
H00010363-B01	HMG20A MaxPab mouse polyclonal antibody (B01)	Det Ab,IF,IHC-P,WB-Tr
H00010363-M01	HMG20A monoclonal antibody (M01), clone 4D5	ELISA,IHC-P,S-ELISA,WB-Re,WB-Tr
PAB6233	HMG20A polyclonal antibody	ELISA,IHC-P,WB
H00010363-D01P	HMG20A purified MaxPab rabbit polyclonal antibody (D01P)	Det Ab,WB-Tr
MAB9611	HMMR monoclonal antibody, clone 2D6	IHC-Fr,IHC-P
PAB19356	HMMR polyclonal antibody	ELISA,WB-Ti
H00003172-B01	HNF4A MaxPab mouse polyclonal antibody (B01)	Det Ab,IF,WB-Tr
H00003172-D01	HNF4A MaxPab rabbit polyclonal antibody (D01)	Det Ab,IP,WB-Ce,WB-Tr
H00003172-M04	HNF4A monoclonal antibody (M04), clone 4E2	ELISA,IF,RNAi-Ab,S-ELISA,WB-Ce,WB-Re,WB-Tr
H00003172-M05	HNF4A monoclonal antibody (M05), clone 1F12	ELISA,IF,S-ELISA,WB-Ce,WB-Re
H00003172-M06	HNF4A monoclonal antibody (M06), clone 4D9	ELISA,S-ELISA,WB-Re,WB-Tr
H00003172-M07	HNF4A monoclonal antibody (M07), clone 3C6	ELISA,IF,S-ELISA,WB-Ce,WB-Re
H00003172-M13	HNF4A monoclonal antibody (M13), clone 1F2	ELISA,WB-Re
H00003172-M14	HNF4A monoclonal antibody (M14), clone 1H2	ELISA,WB-Re
PAB6768	HNF4A polyclonal antibody	ELISA,WB-Ce
H00003172-D01P	HNF4A purified MaxPab rabbit polyclonal antibody (D01P)	Det Ab,PLA-Ce,WB-Ce,WB-Tr
PAB18391	HNRNPD polyclonal antibody	ELISA,IF,IHC-P,WB-Ce
H00003184-D01P	HNRNPD purified MaxPab rabbit polyclonal antibody (D01P)	Det Ab,WB-Tr
H00003184-B01P	HNRNPD purified MaxPab mouse polyclonal antibody (B01P)	Det Ab,IF,WB-Tr
H00011145-M01	HRASLS3 monoclonal antibody (M01), clone 1B10-2D9	ELISA,S-ELISA,WB-Re
H00011145-B01P	HRASLS3 purified MaxPab mouse polyclonal antibody (B01P)	Det Ab,IF,WB-Ti,WB-Tr
H00011145-D01P	HRASLS3 purified MaxPab rabbit polyclonal antibody (D01P)	Det Ab,WB-Tr
H00003291-B01	HSD11B2 MaxPab mouse polyclonal antibody (B01)	Det Ab,WB-Ti,WB-Tr
H00003291-D01	HSD11B2 MaxPab rabbit polyclonal antibody (D01)	Det Ab,IP,WB-Ti,WB-Tr
H00003291-B01P	HSD11B2 purified MaxPab mouse polyclonal antibody (B01P)	Det Ab,WB-Ti,WB-Tr
H00003291-D01P	HSD11B2 purified MaxPab rabbit polyclonal antibody (D01P)	Det Ab,WB-Ti,WB-Tr
H00051491-B01	HSPC111 MaxPab mouse polyclonal antibody (B01)	Det Ab,IF,IHC-P,WB-Ce,WB-Tr
H00051491-B02	HSPC111 MaxPab mouse polyclonal antibody (B02)	Det Ab,WB-Tr
H00051491-M01	HSPC111 monoclonal antibody (M01), clone 1G4	ELISA,IF,IHC-P,S-ELISA,WB-Ce,WB-Re
H00051491-B01P	HSPC111 purified MaxPab mouse polyclonal antibody (B01P)	Det Ab,IF,IHC-P,WB-Ce,WB-Tr
H00051491-D01P	HSPC111 purified MaxPab rabbit polyclonal antibody (D01P)	Det Ab,WB-Ce,WB-Ti,WB-Tr
H00051491-D03P	HSPC111 purified MaxPab rabbit polyclonal antibody (D03P)	Det Ab,WB-Tr
H00051504-B01	HSPC152 MaxPab mouse polyclonal antibody (B01)	Det Ab,WB-Ti,WB-Tr
H00051504-D01	HSPC152 MaxPab rabbit polyclonal antibody (D01)	Det Ab,IP
H00051504-M09	HSPC152 monoclonal antibody (M09), clone 3E5	ELISA,WB-Re,WB-Tr
H00003336-M01	HSPE1 monoclonal antibody (M01), clone 4C11-B11	ELISA,IF,S-ELISA,WB-Ce,WB-Re,WB-Tr
PAB15431	HSPE1 polyclonal antibody	ELISA,IHC,IP,WB-Ti
H00003397-M01A	ID1 monoclonal antibody (M01A), clone 4D7-1A2	ELISA,WB-Re
H00003397-M02	ID1 monoclonal antibody (M02), clone 1F7	ELISA,IF,RNAi-Ab,S-ELISA,WB-Re,WB-Tr
H00003397-M03	ID1 monoclonal antibody (M03), clone 2E10	ELISA,S-ELISA,WB-Re
H00003397-M04	ID1 monoclonal antibody (M04), clone 4G11	ELISA,IF,S-ELISA,WB-Ce,WB-Re
H00003397-M05A	ID1 monoclonal antibody (M05A), clone 5D9	ELISA,WB-Re,WB-Tr
H00003397-M08	ID1 monoclonal antibody (M08), clone 4G7	ELISA,S-ELISA
H00003397-M09	ID1 monoclonal antibody (M09), clone 1B10	ELISA,S-ELISA,WB-Re
H00003397-M10	ID1 monoclonal antibody (M10), clone 3A9	ELISA,S-ELISA,WB-Re
H00003397-M11	ID1 monoclonal antibody (M11), clone 2C7	ELISA,S-ELISA,WB-Re
H00003397-M12	ID1 monoclonal antibody (M12), clone 1D9	ELISA,S-ELISA,WB-Re



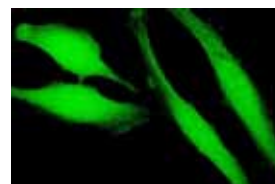
H00010363-B01

Immunoperoxidase of purified MaxPab antibody to HMG20A on formalin-fixed paraffin-embedded human placenta. [antibody concentration 3 ug/ml]



H00010363-M01

Immunoperoxidase of monoclonal antibody to HMG20A on formalin-fixed paraffin-embedded human colon. [antibody concentration 3 ug/ml]



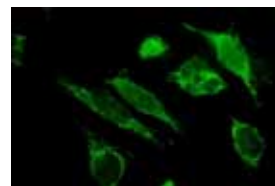
H00011145-B01P

Immunofluorescence of purified MaxPab antibody to HRASLS3 on HeLa cell. [antibody concentration 10 ug/ml]



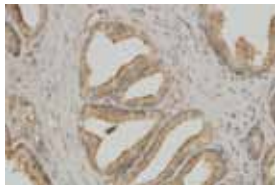
H00051491-B01

Immunoperoxidase of purified MaxPab antibody to HSPC111 on formalin-fixed paraffin-embedded human esophagus. [antibody concentration 3 ug/ml]



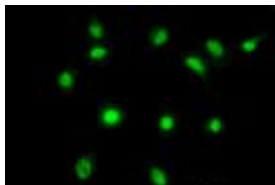
H00003336-M01

Immunofluorescence of monoclonal antibody to HSPE1 on HeLa cell. [antibody concentration 10 ug/ml]



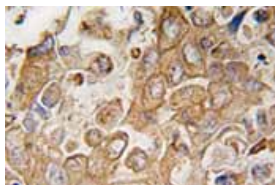
H00010376-M01

Immunoperoxidase of monoclonal antibody to K-ALPHA-1 on formalin-fixed paraffin-embedded human prostate. [antibody concentration 3 ug/ml]



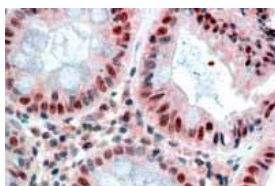
H00009079-M03

Immunofluorescence of monoclonal antibody to LDB2 on HeLa cell. [antibody concentration 10 ug/ml]



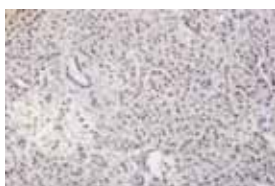
PAB2573

Immunoperoxidase staining of LECT1 polyclonal antibody on formalin-fixed paraffin-embedded human lung carcinoma (Cat # PAB2573)



PAB7163

MBD2 polyclonal antibody (Cat # PAB7163) (2.5 ug/mL) staining of paraffin embedded human colon. Steamed antigen retrieval with citrate buffer pH 6, AP-staining.



H00008079-M01

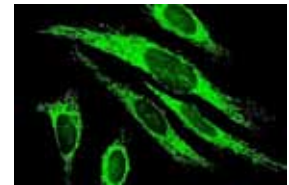
Immunoperoxidase of monoclonal antibody to MLF2 on formalin-fixed paraffin-embedded human pancreas. [antibody concentration 3 ug/ml]

Antibodies

Cat. Num.	Product Name	Application
H00003397-M13	ID1 monoclonal antibody (M13), clone 3F8	ELISA,S-ELISA,WB-Re
H00003397-M14	ID1 monoclonal antibody (M14), clone 3F3	ELISA,S-ELISA,WB-Re
H00003397-M15	ID1 monoclonal antibody (M15), clone 4F6	ELISA,S-ELISA,WB-Re
H00003397-B01P	ID1 purified MaxPab mouse polyclonal antibody (B01P)	Det Ab,IF,WB-Tr
PAB18969	IDH1 polyclonal antibody	ELISA,WB-Ce
PAB18971	IDH1 polyclonal antibody	ELISA,WB-Ce
PAB19265	IDH1 polyclonal antibody	ELISA,WB-Ce
H00003417-D01P	IDH1 purified MaxPab rabbit polyclonal antibody (D01P)	Det Ab,WB-Ti,WB-Tr
PAB3735	IDH3A polyclonal antibody	ELISA,WB-Ce
H00003419-B01P	IDH3A purified MaxPab mouse polyclonal antibody (B01P)	Det Ab,IF,WB-Ce,WB-Ti,WB-Tr
H00010437-D01	IFI30 MaxPab rabbit polyclonal antibody (D01)	Det Ab,IP,WB-Tr
H00010437-B01P	IFI30 purified MaxPab mouse polyclonal antibody (B01P)	Det Ab,WB-Ti,WB-Tr
H00010437-D01P	IFI30 purified MaxPab rabbit polyclonal antibody (D01P)	Det Ab,WB-Tr
H00003712-B01P	IVD purified MaxPab mouse polyclonal antibody (B01P)	Det Ab,WB-Tr
H00003712-D01P	IVD purified MaxPab rabbit polyclonal antibody (D01P)	Det Ab,WB-Tr
PAB17431	JAKMIP2 polyclonal antibody	ELISA,IHC-P,WB-Ce
H00010376-M01	K-ALPHA-1 monoclonal antibody (M01), clone 4D1	ELISA,IF,IHC-P,WB-Ce,WB-Re,WB-Tr
H00010376-A01	K-ALPHA-1 polyclonal antibody (A01)	ELISA,WB-Re
H00010376-A02	K-ALPHA-1 polyclonal antibody (A02)	ELISA,WB-Ce,WB-Re
H00023392-B01	KIAA0368 MaxPab mouse polyclonal antibody (B01)	Det Ab,WB-Ti,WB-Tr
H00023392-D01	KIAA0368 MaxPab rabbit polyclonal antibody (D01)	Det Ab,IP
H00023392-B01P	KIAA0368 purified MaxPab mouse polyclonal antibody (B01P)	Det Ab,WB-Ti,WB-Tr
H00055215-B01	KIAA1794 MaxPab mouse polyclonal antibody (B01)	Det Ab,WB-Tr
H00023095-B01	KIF1B MaxPab mouse polyclonal antibody (B01)	Det Ab,WB-Tr
H00023095-A01	KIF1B polyclonal antibody (A01)	ELISA,WB-Re
H00055975-B01	KLHL7 MaxPab mouse polyclonal antibody (B01)	Det Ab,WB-Tr
H00055975-B01P	KLHL7 purified MaxPab mouse polyclonal antibody (B01P)	Det Ab,WB-Tr
H00003889-D01	KRT83 MaxPab rabbit polyclonal antibody (D01)	Det Ab,IP,WB-Tr
PAB2886	LARS polyclonal antibody	ELISA,IHC-P,WB-Ce
H00009079-M01	LDB2 monoclonal antibody (M01), clone 1C2	ELISA,IF,S-ELISA,WB-Ce
H00009079-M02	LDB2 monoclonal antibody (M02), clone 1A3	ELISA,IF,WB-Ce,WB-Re
H00009079-M03	LDB2 monoclonal antibody (M03), clone 1C3	ELISA,IF,WB-Re
H00011061-B01	LECT1 MaxPab mouse polyclonal antibody (B01)	Det Ab,WB-Tr
H00011061-D01	LECT1 MaxPab rabbit polyclonal antibody (D01)	Det Ab,IP,WB-Tr
PAB2572	LECT1 polyclonal antibody	ELISA,WB-Ce
PAB2573	LECT1 polyclonal antibody	ELISA,IHC-P,WB-Ce
H00011061-D01P	LECT1 purified MaxPab rabbit polyclonal antibody (D01P)	Det Ab,WB-Tr
PAB0140	LRIG1 polyclonal antibody	IHC-P,WB-Tr
PAB4735	LRP4 polyclonal antibody	ELISA,IHC-P
PAB18700	LRP4 polyclonal antibody	ELISA,WB-Ti
H00057134-B01P	MAN1C1 purified MaxPab mouse polyclonal antibody (B01P)	Det Ab,WB-Tr
H00057134-D01P	MAN1C1 purified MaxPab rabbit polyclonal antibody (D01P)	Det Ab,WB-Tr
H00009053-B01P	MAP7 purified MaxPab mouse polyclonal antibody (B01P)	Det Ab,WB-Tr
H00009053-D01P	MAP7 purified MaxPab rabbit polyclonal antibody (D01P)	Det Ab,WB-Tr
H00058478-B01	MASA MaxPab mouse polyclonal antibody (B01)	Det Ab,WB-Ti,WB-Tr
H00058478-M01	MASA monoclonal antibody (M01), clone 3C1-1D5	ELISA,S-ELISA,WB-Ce,WB-Re
H00027430-A01	MAT2B polyclonal antibody (A01)	ELISA,WB-Re
PAB2234	MBD2 polyclonal antibody	ELISA,WB
PAB2235	MBD2 polyclonal antibody	ELISA,WB-Ce
PAB7163	MBD2 polyclonal antibody	ELISA,IHC-P,WB-Ce
H00004190-M01	MDH1 monoclonal antibody (M01), clone 2B11-B7	ELISA,S-ELISA,WB-Ce,WB-Tr
H00004190-M03	MDH1 monoclonal antibody (M03), clone 1D2	ELISA,WB-Re,WB-Tr
MAB8873	MDH1 monoclonal antibody, clone 99n65	ELISA,WB-Re
H00004190-A01	MDH1 polyclonal antibody (A01)	ELISA,WB-Re
H00079154-B01	MGC4172 MaxPab mouse polyclonal antibody (B01)	Det Ab,WB-Tr
H00079154-B02	MGC4172 MaxPab mouse polyclonal antibody (B02)	Det Ab,WB-Tr
H00079154-B01P	MGC4172 purified MaxPab mouse polyclonal antibody (B01P)	Det Ab,WB-Tr
H00004291-B01	MLF1 MaxPab mouse polyclonal antibody (B01)	Det Ab,WB-Tr
H00004291-D01	MLF1 MaxPab rabbit polyclonal antibody (D01)	Det Ab,IP,WB-Ti,WB-Tr
H00004291-B01P	MLF1 purified MaxPab mouse polyclonal antibody (B01P)	Det Ab,WB-Tr
H00004291-D01P	MLF1 purified MaxPab rabbit polyclonal antibody (D01P)	Det Ab,WB-Ti,WB-Tr
H00008079-B01	MLF2 MaxPab mouse polyclonal antibody (B01)	Det Ab,IF,WB-Ti,WB-Tr
H00008079-M01	MLF2 monoclonal antibody (M01), clone 2F6-1E3	ELISA,IHC-P,S-ELISA,WB-Re,WB-Tr
H00008079-B01P	MLF2 purified MaxPab mouse polyclonal antibody (B01P)	Det Ab,IF,WB-Ti,WB-Tr
PAB6552	MPP6 polyclonal antibody	ELISA,WB-Ce

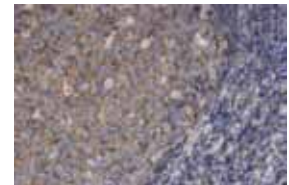
Antibodies

Cat. Num.	Product Name	Application
H00065258-M08	MPPE1 monoclonal antibody (M08), clone 3E4	ELISA
H00065258-D01P	MPPE1 purified MaxPab rabbit polyclonal antibody (D01P)	Det Ab,WB-Tr
PAB17560	MRPL16 polyclonal antibody	ELISA,IHC-P,WB-Ce
H00054948-D01P	MRPL16 purified MaxPab rabbit polyclonal antibody (D01P)	Det Ab,WB-Tr
PAB17563	MRPL34 polyclonal antibody	ELISA,IHC-P
H00028977-B01	MRPL42 MaxPab mouse polyclonal antibody (B01)	Det Ab,WB-Tr
H00028977-B01P	MRPL42 purified MaxPab mouse polyclonal antibody (B01P)	Det Ab,WB-Tr
H00028977-D01P	MRPL42 purified MaxPab rabbit polyclonal antibody (D01P)	Det Ab,WB-Tr
PAB17554	MRPS16 polyclonal antibody	ELISA,IHC-P,WB-Ce
H00023107-B01	MRPS27 MaxPab mouse polyclonal antibody (B01)	Det Ab,IF,WB-Ti,WB-Tr
H00023107-M06	MRPS27 monoclonal antibody (M06), clone 1G3	ELISA,S-ELISA
H00023107-M14A	MRPS27 monoclonal antibody (M14A), clone 3G8	ELISA,WB-Ce,WB-Re
H00023107-B01P	MRPS27 purified MaxPab mouse polyclonal antibody (B01P)	Det Ab,IF,WB-Ti,WB-Tr
H00023107-D01P	MRPS27 purified MaxPab rabbit polyclonal antibody (D01P)	Det Ab,WB-Ce,WB-Tr
H00065993-D01	MRPS34 MaxPab rabbit polyclonal antibody (D01)	Det Ab,IP
H00065993-B01P	MRPS34 purified MaxPab mouse polyclonal antibody (B01P)	Det Ab,WB-Ti,WB-Tr
H00065993-D02P	MRPS34 purified MaxPab rabbit polyclonal antibody (D02P)	Det Ab,WB-Tr
H00004478-M13	MSN monoclonal antibody (M13), clone 4B8	ELISA,IHC-P,WB-Re
MAB9964	MSN monoclonal antibody, clone 25	ELISA,WB-Ce
MAB9965	MSN monoclonal antibody, clone 30	ELISA,WB-Ce
MAB9966	MSN monoclonal antibody, clone 41	ELISA,WB-Ce
PAB7062	MSN polyclonal antibody	ELISA,WB-Ti
PAB18412	MSN polyclonal antibody	ELISA,IHC-P,WB-Ce
H00004478-A01	MSN polyclonal antibody (A01)	ELISA,WB-Re
H00004478-D01P	MSN purified MaxPab rabbit polyclonal antibody (D01P)	Det Ab,WB-Tr
PAB11432	MTHFD1 polyclonal antibody	ELISA,WB-Ti
H00004522-B01P	MTHFD1 purified MaxPab mouse polyclonal antibody (B01P)	Det Ab,IF,WB-Ce,WB-Ti,WB-Tr
H00004522-D01P	MTHFD1 purified MaxPab rabbit polyclonal antibody (D01P)	Det Ab,WB-Ti,WB-Tr
PAB4503	MTMR6 polyclonal antibody	ELISA,IHC-P,WB-Ti
H00009107-B01P	MTMR6 purified MaxPab mouse polyclonal antibody (B01P)	Det Ab,WB-Ti,WB-Tr
H00009107-D01P	MTMR6 purified MaxPab rabbit polyclonal antibody (D01P)	Det Ab,WB-Tr
PAB5466	MYO10 polyclonal antibody	ELISA,WB
PAB5467	MYO10 polyclonal antibody	ELISA,WB
H00079923-M01	NANOG monoclonal antibody (M01), clone 2C11	ELISA,S-ELISA,WB-Ce,WB-Re
H00079923-M02	NANOG monoclonal antibody (M02), clone 2E11	ELISA,IF,S-ELISA,WB-Re
H00079923-M04	NANOG monoclonal antibody (M04), clone 3A12	ELISA,IF,S-ELISA
H00079923-M08	NANOG monoclonal antibody (M08), clone 1A2	ELISA,S-ELISA,WB-Ce,WB-Re
H00079923-M09	NANOG monoclonal antibody (M09), clone 1F8	ELISA,S-ELISA,WB-Ce
MAB2042	NANOG monoclonal antibody, clone 5A10	ELISA,WB-Ce
PAB0375	NANOG polyclonal antibody	WB-Ce
PAB1886	NANOG polyclonal antibody	ELISA,IHC-P,WB-Ce,WB-Tr
PAB1887	NANOG polyclonal antibody	ELISA,Flow Cyt,IF,IHC-P,WB-Ce,WB-Tr
PAB6837	NANOG polyclonal antibody	ELISA,IF,WB-Ti
PAB7232	NANOG polyclonal antibody	ELISA,IHC-P,WB-Ce
PAB13694	NANOG polyclonal antibody	ICC,IF,WB-Ce
PAB19186	NANOG polyclonal antibody	ELISA,IHC,WB-Ti
H00004674-D01	NAP1L2 MaxPab rabbit polyclonal antibody (D01)	Det Ab,IP,WB-Tr
H00004674-B01P	NAP1L2 purified MaxPab mouse polyclonal antibody (B01P)	Det Ab,IF,WB-Tr
H00004674-D01P	NAP1L2 purified MaxPab rabbit polyclonal antibody (D01P)	Det Ab,WB-Tr
H00054539-M08	NDUFB11 monoclonal antibody (M08), clone 4B2	ELISA,S-ELISA,WB-Ce,WB-Re
H00054539-M12	NDUFB11 monoclonal antibody (M12), clone 1D6	ELISA,S-ELISA,WB-Re
H00004801-M01	NFYB monoclonal antibody (M01), clone 6H6	ELISA,RNAi-Ab,S-ELISA,WB-Re,WB-Tr
H00004801-M02	NFYB monoclonal antibody (M02), clone 6E4	ELISA,IF,S-ELISA,WB-Re
H00004801-M03	NFYB monoclonal antibody (M03), clone 5D1	ELISA,IF,S-ELISA,WB-Re
H00004801-M06	NFYB monoclonal antibody (M06), clone 1G10	ELISA,S-ELISA,WB-Re
H00004801-M08A	NFYB monoclonal antibody (M08A), clone 2H2	ELISA,WB-Re
PAB0659	NFYB polyclonal antibody	ChIP,IF,IP
H00004801-A01	NFYB polyclonal antibody (A01)	ELISA,WB-Re
H00051491-D01	NOP16 MaxPab rabbit polyclonal antibody (D01)	Det Ab,IP,WB-Ce,WB-Ti,WB-Tr
H00004885-B01	NPTX2 MaxPab mouse polyclonal antibody (B01)	Det Ab,WB-Tr
H00004885-D01	NPTX2 MaxPab rabbit polyclonal antibody (D01)	Det Ab,IP
PAB2556	NPTX2 polyclonal antibody	ELISA,IHC-P,WB-Tr
PAB2557	NPTX2 polyclonal antibody	ELISA,IHC-P,WB-Tr
PAB13033	NPTX2 polyclonal antibody	IHC-P,WB-Ti
H00004835-M01	NQO2 monoclonal antibody (M01), clone 3E8-G2	ELISA,S-ELISA,WB-Tr



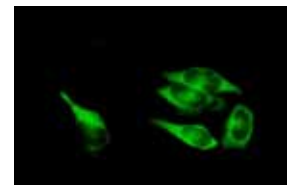
H00023107-B01

Immunofluorescence of purified MaxPab antibody to MRPS27 on HeLa cell. [antibody concentration 10 ug/ml]



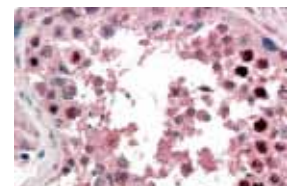
H00004478-M13

Immunoperoxidase of monoclonal antibody to MSN on formalin-fixed paraffin-embedded human tonsil. [antibody concentration 3 ug/ml]



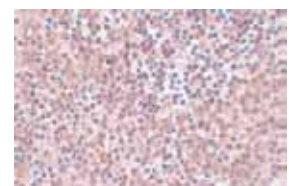
H00004522-B01P

Immunofluorescence of purified MaxPab antibody to MTHFD1 on HeLa cell. [antibody concentration 10 ug/ml]



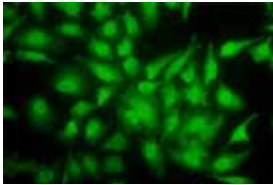
PAB7232

NANOG polyclonal antibody (Cat # PAB7232) (2 ug/mL) staining of paraffin embedded human testis. Steamed antigen retrieval with citrate buffer pH 6, AP-staining.



PAB19186

Immunohistochemical staining of human spleen tissue with NANOG polyclonal antibody (Cat # PAB19186) at 5 ug/mL dilution.



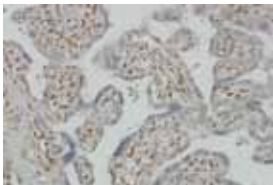
H00004904-M01

Immunofluorescence of monoclonal antibody to YBX1 on HeLa cell. [antibody concentration 20 ug/ml]



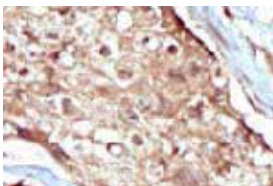
H00009060-B01

Immunoperoxidase of purified MaxPab antibody to PAPSS2 on formalin-fixed paraffin-embedded human endometrium. [antibody concentration 3 ug/ml]



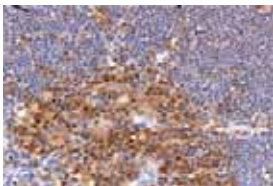
H00009060-M07

Immunoperoxidase of monoclonal antibody to PAPSS2 on formalin-fixed paraffin-embedded human placenta. [antibody concentration 3 ug/ml]



PAB3306

Immunohistochemical staining in human cancer tissue reacted with PAPSS2 polyclonal antibody (Cat # PAB3306)



PAB15511

Immunohistochemical staining in mouse thymus with PFN1 polyclonal antibody (Cat # PAB15511).

Antibodies

Cat. Num.	Product Name	Application
MAB9720	NQO2 monoclonal antibody, clone AT1E3	ELISA,WB-Ti
H00004835-A01	NQO2 polyclonal antibody (A01)	ELISA,WB-Ce,WB-Re
H00004835-B01P	NQO2 purified MaxPab mouse polyclonal antibody (B01P)	Det Ab,WB-Tr
H00008856-D01	NR1I2 MaxPab rabbit polyclonal antibody (D01)	Det Ab,IP,WB-Tr
PAB11612	NR1I2 polyclonal antibody	ELISA,WB-Ce
H00008856-A01	NR1I2 polyclonal antibody (A01)	ELISA,WB-Re,WB-Ti
H00008856-B01P	NR1I2 purified MaxPab mouse polyclonal antibody (B01P)	Det Ab,IF,WB-Ti,WB-Tr
H00008856-D01P	NR1I2 purified MaxPab rabbit polyclonal antibody (D01P)	Det Ab,WB-Tr
H00079366-B02	NSBP1 MaxPab mouse polyclonal antibody (B02)	Det Ab,WB-Tr
H00004904-M01	NSEP1 monoclonal antibody (M01), clone 4F12	ELISA,IF,S-ELISA,WB-Re
H00004904-A01	NSEP1 polyclonal antibody (A01)	ELISA,WB-Re
H00004922-B01	NTS MaxPab mouse polyclonal antibody (B01)	Det Ab,WB-Tr
H00004922-M01	NTS monoclonal antibody (M01), clone 3A11	ELISA
H00004922-M03	NTS monoclonal antibody (M03), clone 1G8	ELISA
PAB7828	NTS polyclonal antibody	ICC,IF
H00004922-D01P	NTS purified MaxPab rabbit polyclonal antibody (D01P)	Det Ab,WB-Tr
H00004521-B01	NUDT1 MaxPab mouse polyclonal antibody (B01)	Det Ab,WB-Tr
H00004521-D01	NUDT1 MaxPab rabbit polyclonal antibody (D01)	Det Ab,IP,WB-Ti,WB-Tr
H00004521-M02	NUDT1 monoclonal antibody (M02), clone 5F11	ELISA,S-ELISA,WB-Re,WB-Tr
PAB12088	NUDT1 polyclonal antibody	IHC-Fr,WB-Ce
PAB18799	NUDT1 polyclonal antibody	ELISA,WB-Ce
H00053371-B01	NUP54 MaxPab mouse polyclonal antibody (B01)	Det Ab,WB-Tr
PAB3730	NUP54 polyclonal antibody	ELISA,WB-Ce
PAB3731	NUP54 polyclonal antibody	ELISA,WB-Ti
H00053371-D01P	NUP54 purified MaxPab rabbit polyclonal antibody (D01P)	Det Ab,WB-Tr
MAB8480	OAT monoclonal antibody, clone AT23A2	ELISA,IF,WB-Ti
H00004942-D01P	OAT purified MaxPab rabbit polyclonal antibody (D01P)	Det Ab,WB-Tr
PAB7209	OGT polyclonal antibody	ELISA,WB-Ti
H00011339-D01	OIP5 MaxPab rabbit polyclonal antibody (D01)	Det Ab,IP,WB-Tr
H00011339-M01	OIP5 monoclonal antibody (M01), clone 3G10-1D5	ELISA,IP,S-ELISA,WB-Re,WB-Tr
H00011339-A01	OIP5 polyclonal antibody (A01)	ELISA,WB-Re
H00011339-B01P	OIP5 purified MaxPab mouse polyclonal antibody (B01P)	Det Ab,WB-Tr
H00011339-D01P	OIP5 purified MaxPab rabbit polyclonal antibody (D01P)	Det Ab,WB-Tr
H00114884-B01	OSBPL10 MaxPab mouse polyclonal antibody (B01)	Det Ab,WB-Tr
PAB6890	OSBPL10 polyclonal antibody	ELISA,WB-Ti
H00114884-D01P	OSBPL10 purified MaxPab rabbit polyclonal antibody (D01P)	Det Ab,WB-Tr
H00005018-D01	OXA1L MaxPab rabbit polyclonal antibody (D01)	IP,WB-Ce,WB-Ti,WB-Tr
H00005018-B03P	OXA1L purified MaxPab mouse polyclonal antibody (B03P)	Det Ab,WB-Ti,WB-Tr
H00005018-D01P	OXA1L purified MaxPab rabbit polyclonal antibody (D01P)	Det Ab,WB-Ce,WB-Ti,WB-Tr
H00010606-M01	PAICS monoclonal antibody (M01), clone 4F4	ELISA,WB-Ti
H00010606-D01P	PAICS purified MaxPab rabbit polyclonal antibody (D01P)	Det Ab,WB-Tr
H00009060-B01	PAPSS2 MaxPab mouse polyclonal antibody (B01)	Det Ab,IF,IHC-P,WB-Ti,WB-Tr
H00009060-D01	PAPSS2 MaxPab rabbit polyclonal antibody (D01)	IP,WB-Ce,WB-Tr
H00009060-M07	PAPSS2 monoclonal antibody (M07), clone 2A8	ELISA,IF,IHC-PRNAI-Ab,S-ELISA,WB-Ce,WB-Re,WB-Tr
PAB3306	PAPSS2 polyclonal antibody	ELISA,IHC-P,WB-Ce
H00009060-A01	PAPSS2 polyclonal antibody (A01)	ELISA,WB-Re
H00009060-B01P	PAPSS2 purified MaxPab mouse polyclonal antibody (B01P)	Det Ab,IF,IHC-P,WB-Ti,WB-Tr
H00005096-D01	PCCB MaxPab rabbit polyclonal antibody (D01)	Det Ab,IP,WB-Ti,WB-Tr
H00005096-B01P	PCCB purified MaxPab mouse polyclonal antibody (B01P)	Det Ab,WB-Ce,WB-Ti,WB-Tr
H00005096-D01P	PCCB purified MaxPab rabbit polyclonal antibody (D01P)	Det Ab,WB-Ti,WB-Tr
H00055795-D01P	PCID2 purified MaxPab rabbit polyclonal antibody (D01P)	Det Ab,WB-Tr
H00005141-B01	PDE4A MaxPab mouse polyclonal antibody (B01)	Det Ab,WB-Tr
H00005141-B01P	PDE4A purified MaxPab mouse polyclonal antibody (B01P)	Det Ab,WB-Tr
H00005141-D01P	PDE4A purified MaxPab rabbit polyclonal antibody (D01P)	Det Ab,WB-Tr
MAB2099	PDPN monoclonal antibody, clone 5E2	ELISA,WB-Ti
MAB10021	PDPN monoclonal antibody, clone D2-40	IHC
PAB3850	PDPN polyclonal antibody	ELISA,WB-Ce
PAB16251	PDPN polyclonal antibody	ELISA,WB
PAB19505	PDPN polyclonal antibody	WB-Ti
H00005203-B01	PFDN4 MaxPab mouse polyclonal antibody (B01)	Det Ab,WB-Tr
H00005203-B02	PFDN4 MaxPab mouse polyclonal antibody (B02)	Det Ab,WB-Tr
H00005203-B01P	PFDN4 purified MaxPab mouse polyclonal antibody (B01P)	Det Ab,WB-Tr
H00005203-D01P	PFDN4 purified MaxPab rabbit polyclonal antibody (D01P)	Det Ab,WB-Tr
H00005216-B01	PFN1 MaxPab mouse polyclonal antibody (B01)	Det Ab,WB-Tr
PAB15511	PFN1 polyclonal antibody	IHC,WB-Ce

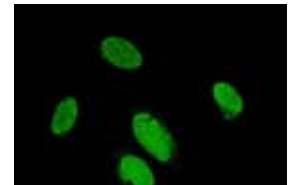
Antibodies

Cat. Num.	Product Name	Application
H00005216-A01	PFN1 polyclonal antibody (A01)	ELISA,WB-Ce,WB-Re
H00005216-A02	PFN1 polyclonal antibody (A02)	ELISA,WB-Ce,WB-Re
H00005216-B01P	PFN1 purified MaxPab mouse polyclonal antibody (B01P)	Det Ab,WB-Tr
H00005223-M01	PGAM1 monoclonal antibody (M01), clone 2G1-A6	ELISA,IP,S-ELISA,WB-Ce,WB-Tr
H00005223-M02	PGAM1 monoclonal antibody (M02), clone 4F5-D8	ELISA,S-ELISA
H00005223-A01	PGAM1 polyclonal antibody (A01)	ELISA,WB-Re
H00026227-M01	PHGDH monoclonal antibody (M01), clone 4A3-1D6	ELISA,IF,IHC-P,IP,S-ELISA,WB-Ce,WB-Re,WB-Ti,WB-Tr
H00026227-M02	PHGDH monoclonal antibody (M02), clone 4D5-1F11	ELISA,WB-Re
H00026227-B01P	PHGDH purified MaxPab mouse polyclonal antibody (B01P)	Det Ab,WB-Ce,WB-Tr
H00026227-D01P	PHGDH purified MaxPab rabbit polyclonal antibody (D01P)	Det Ab,WB-Ti,WB-Tr
H00055011-D01	PIH1D1 MaxPab rabbit polyclonal antibody (D01)	Det Ab,IP,WB-Tr
H00055011-B01P	PIH1D1 purified MaxPab mouse polyclonal antibody (B01P)	Det Ab,WB-Ti,WB-Tr
H00055011-D01P	PIH1D1 purified MaxPab rabbit polyclonal antibody (D01P)	Det Ab,WB-Tr
H00051268-B01	PIPOX MaxPab mouse polyclonal antibody (B01)	Det Ab,WB-Tr
H00051268-M10	PIPOX monoclonal antibody (M10), clone 3D1	ELISA,IP,WB-Re,WB-Tr
H00051268-D01P	PIPOX purified MaxPab rabbit polyclonal antibody (D01P)	Det Ab,WB-Tr
H00005308-M01	PITX2 monoclonal antibody (M01), clone 2G6	ELISA,IF,S-ELISA,WB-Re
H00005308-M02	PITX2 monoclonal antibody (M02), clone 3D2	ELISA,WB-Ce,WB-Re
PAB3073	PITX2 polyclonal antibody	ELISA,WB-Ce
H00005308-A01	PITX2 polyclonal antibody (A01)	ELISA,WB-Re
H00005308-A03	PITX2 polyclonal antibody (A03)	ELISA,WB-Re
H00005308-D01P	PITX2 purified MaxPab rabbit polyclonal antibody (D01P)	Det Ab,PLA-Ce,WB-Ti,WB-Tr
H00011145-D01	PLA2G16 MaxPab rabbit polyclonal antibody (D01)	Det Ab,IP,WB-Tr
H00011145-M02	PLA2G16 monoclonal antibody (M02), clone 4C4-2A11	ELISA,S-ELISA,WB-Re,WB-Tr
H00005354-D01	PLP1 MaxPab rabbit polyclonal antibody (D01)	Det Ab,IP,WB-Tr
H00005354-M03	PLP1 monoclonal antibody (M03), clone 2D7	ELISA,S-ELISA,WB-Re
H00005354-M05	PLP1 monoclonal antibody (M05), clone 4H8	ELISA,S-ELISA,WB-Re
H00005354-A01	PLP1 polyclonal antibody (A01)	ELISA,WB-Re
H00005354-D01P	PLP1 purified MaxPab rabbit polyclonal antibody (D01P)	Det Ab,WB-Tr
H00005360-B01	PLTP MaxPab mouse polyclonal antibody (B01)	Det Ab,WB-Tr
H00005360-M01	PLTP monoclonal antibody (M01), clone 2F3-G4	ELISA,IHC-P,WB-Ce,WB-Re,WB-Tr
PAB8933	PLTP polyclonal antibody	IHC,WB-Ce
PAB12070	PLTP polyclonal antibody	WB-Ti
H00005360-A01	PLTP polyclonal antibody (A01)	ELISA
H00005360-D01P	PLTP purified MaxPab rabbit polyclonal antibody (D01P)	Det Ab,WB-Ti,WB-Tr
H00005366-B01	PMAIP1 MaxPab mouse polyclonal antibody (B01)	Det Ab,WB-Tr
MAB0093	PMAIP1 monoclonal antibody, clone 114C307.1	ICC,IF,WB-Ce
PAB8873	PMAIP1 polyclonal antibody	WB-Ce
PAB17033	PMAIP1 polyclonal antibody	ELISA,WB-Ti
H00010687-M02	PNMA2 monoclonal antibody (M02), clone 2C5	ELISA,S-ELISA,WB-Re
H00010687-M03	PNMA2 monoclonal antibody (M03), clone 2D4	ELISA,S-ELISA,WB-Re
H00010687-M10	PNMA2 monoclonal antibody (M10), clone 4F10	ELISA,S-ELISA,WB-Re
PAB0210	PNMA2 polyclonal antibody	WB-Ce
PAB7292	PODXL polyclonal antibody	ELISA,WB-Ti
PAB12067	PODXL polyclonal antibody	WB-Ti
PAB12068	PODXL polyclonal antibody	WB-Ti
H00005433-M01	POLR2D monoclonal antibody (M01), clone 1E4-A5	ELISA,WB-Re,WB-Tr
H00005433-A01	POLR2D polyclonal antibody (A01)	ELISA,WB-Re
PAB19039	POR polyclonal antibody	ELISA,WB-Ti
H00005447-B01P	POR purified MaxPab mouse polyclonal antibody (B01P)	Det Ab,IF,WB-Ti,WB-Tr
H00005447-D01P	POR purified MaxPab rabbit polyclonal antibody (D01P)	Det Ab,WB-Ti,WB-Tr
H00005460-M01	POU5F1 monoclonal antibody (M01), clone 1D2	ELISA,WB-Ce,WB-Re,WB-Tr
H00005460-M02	POU5F1 monoclonal antibody (M02), clone 4F8	ELISA,WB-Ce,WB-Re,WB-Tr
H00005460-M04	POU5F1 monoclonal antibody (M04), clone 3A10	ELISA,WB-Ce,WB-Re,WB-Tr
H00005460-M05	POU5F1 monoclonal antibody (M05), clone 1B11	ELISA,WB-Ce,WB-Re,WB-Tr
MAB8811	POU5F1 monoclonal antibody, clone 97q8	ELISA,WB-Re
MAB7083	POU5F1 monoclonal antibody, clone NRG1.1	IHC-P
PAB3868	POU5F1 polyclonal antibody	ELISA,IF,WB,WB-Ce
PAB3870	POU5F1 polyclonal antibody	ELISA,IF,WB-Ce
PAB6831	POU5F1 polyclonal antibody	ELISA,WB-Ti
PAB10296	POU5F1 polyclonal antibody	ELISA,IF,IP,WB
PAB12062	POU5F1 polyclonal antibody	WB
PAB12063	POU5F1 polyclonal antibody	WB-Ti
PAB11142	POU5F1 polyclonal antibody	WB
PAB11720	POU5F1 polyclonal antibody	IHC-P



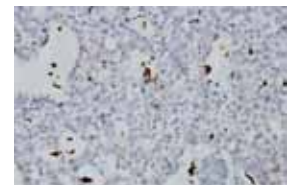
H00026227-M01

Immunoperoxidase of monoclonal antibody to PHGDH on formalin-fixed paraffin-embedded human prostate. [antibody concentration 3 µg/ml]



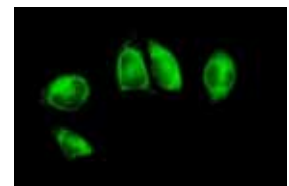
H00005308-M01

Immunofluorescence of monoclonal antibody to PITX2 on HeLa cell. [antibody concentration 10 µg/ml]



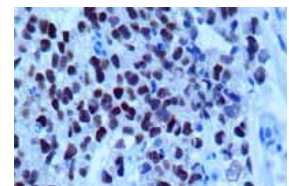
H00005360-M01

Western Blot analysis of PLTP expression in transfected 293T cell line by PLTP monoclonal antibody (M01), clone 2F3-G4. Lane 1: PLTP transfected lysate (54.7 kDa). Lane 2: Non-transfected lysate.



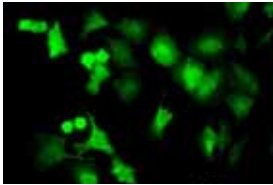
H00005447-B01P

Immunofluorescence of purified MaxPab antibody to POR on HeLa cell. [antibody concentration 10 µg/ml]



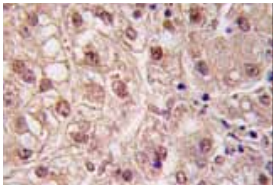
MAB7083

Formalin fixed paraffin embedded human seminomatous tumor stained with POU5F1 monoclonal antibody, clone NRG1.1 (Cat # MAB7083).



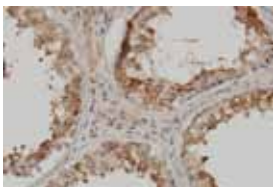
H00005495-M01

Immunofluorescence of monoclonal antibody to PPM1B on HeLa cell. [antibody concentration 10 ug/ml]



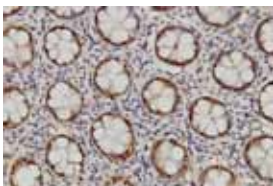
PAB3099

Immunoperoxidase staining in human hepatocellular carcinoma reacted with PSMA5 polyclonal antibody (Cat # PAB3099)



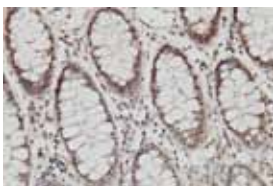
H00005692-M01

Immunoperoxidase of monoclonal antibody to PSMB4 on formalin-fixed paraffin-embedded human testis. [antibody concentration 3ug/ml]



H00005694-M02

Immunoperoxidase of monoclonal antibody to PSMB6 on formalin-fixed paraffin-embedded human colon. [antibody concentration 1 ug/ml]



H00005696-M01

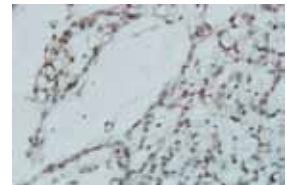
Immunoperoxidase of monoclonal antibody to PSMB8 on formalin-fixed paraffin-embedded human colon. [antibody concentration 3ug/ml]

Antibodies

Cat. Num.	Product Name	Application
PAB14820	POU5F1 polyclonal antibody	IHC-P
PAB19184	POU5F1 polyclonal antibody	ELISA,IHC,WB-Ti
PAB18645	POU5F1B polyclonal antibody	ELISA
H00005478-M01	PPIA monoclonal antibody (M01), clone 1F4-1B5	ELISA,S-ELISA,WB-Ce,WB-Re,WB-Tr
PAB6935	PPIA polyclonal antibody	ELISA,WB-Ti
PAB19521	PPIA polyclonal antibody	IHC-P,WB-Ce
H00005478-A01	PPIA polyclonal antibody (A01)	ELISA,WB-Re
H00005478-D01P	PPIA purified MaxPab rabbit polyclonal antibody (D01P)	Det Ab,WB-Tr
H00005495-B01	PPM1B MaxPab mouse polyclonal antibody (B01)	Det Ab,WB-Tr
H00005495-M01	PPM1B monoclonal antibody (M01), clone 1A3-2A4	ELISA,IF,PLA-Ce,RNAi-Ab,WB-Re,WB-Tr
MAB2036	PPM1B monoclonal antibody, clone k1B1	ELISA,WB-Ce
PAB4158	PPM1B polyclonal antibody	ELISA,IHC-P,WB-Ti
PAB4159	PPM1B polyclonal antibody	ELISA,IHC-P,WB-Ce
H00005495-B01P	PPM1B purified MaxPab mouse polyclonal antibody (B01P)	Det Ab,WB-Tr
PAB4111	PPP1CC polyclonal antibody	ELISA,WB-Ti
PAB4112	PPP1CC polyclonal antibody	ELISA,WB-Ti
PAB10414	PPP1CC polyclonal antibody	IP,WB-Ti
H00005501-A01	PPP1CC polyclonal antibody (A01)	ELISA,WB-Re
H00005501-B02P	PPP1CC purified MaxPab mouse polyclonal antibody (B02P)	Det Ab,WB-Tr
H00005521-M01	PPP2R2B monoclonal antibody (M01), clone 2C11	ELISA,S-ELISA,WB-Re
H00005521-M02	PPP2R2B monoclonal antibody (M02), clone 1F3	ELISA,IP,WB-Re
H00005521-M23	PPP2R2B monoclonal antibody (M23), clone 1B10	ELISA,IP
PAB10420	PPP2R2B polyclonal antibody	WB-Ti
H00005521-D01P	PPP2R2B purified MaxPab rabbit polyclonal antibody (D01P)	Det Ab,WB-Ce,WB-Ti,WB-Tr
H00005547-B01P	PRCP purified MaxPab mouse polyclonal antibody (B01P)	Det Ab,WB-Tr
H00005547-D01P	PRCP purified MaxPab rabbit polyclonal antibody (D01P)	Det Ab,WB-Tr
H00005052-M01	PRDX1 monoclonal antibody (M01), clone 4B11-D10	ELISA,S-ELISA,WB-Ce
MAB0714	PRDX1 monoclonal antibody, clone 13E7	ELISA,IP
MAB0713	PRDX1 monoclonal antibody, clone 2A4	IP
MAB0846	PRDX1 monoclonal antibody, clone 3G5	ELISA,IP,WB-Ce
MAB0690	PRDX1 monoclonal antibody, clone 9D2	ICC,IP
MAB7559	PRDX1 monoclonal antibody, clone AT1D8	ELISA,WB-Ce
PAB1218	PRDX1 polyclonal antibody	WB-Ce
PAB1328	PRDX1 polyclonal antibody	WB
PAB8052	PRDX1 polyclonal antibody	ELISA,IF,WB
PAB11441	PRDX1 polyclonal antibody	ELISA,WB-Ce
H00005052-A01	PRDX1 polyclonal antibody (A01)	ELISA
H00005672-B01P	PSG4 purified MaxPab mouse polyclonal antibody (B01P)	Det Ab,WB-Tr
PAB5537	PSMA3 polyclonal antibody	ELISA,WB
PAB3099	PSMA5 polyclonal antibody	ELISA,IHC-P,WB-Tr
PAB3101	PSMA5 polyclonal antibody	ELISA,IHC-P,WB-Ce,WB-Tr
H00005686-A01	PSMA5 polyclonal antibody (A01)	ELISA,WB-Ce,WB-Re
H00005692-M01	PSMB4 monoclonal antibody (M01), clone 6G7-E8	ELISA,IHC-P,S-ELISA,WB-Re
PAB19052	PSMB4 polyclonal antibody	ELISA,WB-Ce
H00005692-A01	PSMB4 polyclonal antibody (A01)	ELISA,WB-Re
H00005692-D01P	PSMB4 purified MaxPab rabbit polyclonal antibody (D01P)	Det Ab,WB-Ce,WB-Ti,WB-Tr
H00005694-M01	PSMB6 monoclonal antibody (M01), clone 2A3-5A8	ELISA,IHC-P,S-ELISA,WB-Re
H00005694-M02	PSMB6 monoclonal antibody (M02), clone S51	ELISA,IF,IHC-P,S-ELISA,WB-Ce,WB-Re
H00005694-A01	PSMB6 polyclonal antibody (A01)	ELISA,WB-Re
H00005696-D01	PSMB8 MaxPab rabbit polyclonal antibody (D01)	Det Ab,IP,WB-Ti,WB-Tr
H00005696-M01	PSMB8 monoclonal antibody (M01), clone 1B3	ELISA,IF,IHC-P,IP,S-ELISA,WB-Re,WB-Tr
H00005696-M03	PSMB8 monoclonal antibody (M03), clone 1G7	ELISA,S-ELISA,WB-Re
H00005696-M04	PSMB8 monoclonal antibody (M04), clone 2F4	ELISA,S-ELISA,WB-Re
H00005696-M05	PSMB8 monoclonal antibody (M05), clone 4E4	ELISA,S-ELISA,WB-Re
PAB14398	PSMB8 polyclonal antibody	ELISA,WB-Ti
H00005696-B01P	PSMB8 purified MaxPab mouse polyclonal antibody (B01P)	Det Ab,IF,WB-Ti,WB-Tr
PAB3802	PTCD3 polyclonal antibody	ELISA,WB-Ce
H00055037-D01P	PTCD3 purified MaxPab rabbit polyclonal antibody (D01P)	Det Ab,WB-Tr
H00080324-B01	PUS1 MaxPab mouse polyclonal antibody (B01)	Det Ab,WB-Tr
H00080324-B02	PUS1 MaxPab mouse polyclonal antibody (B02)	Det Ab,WB-Tr
H00080324-D01	PUS1 MaxPab rabbit polyclonal antibody (D01)	Det Ab,IP,WB-Tr
H00080324-M01	PUS1 monoclonal antibody (M01), clone 3A3	ELISA,IP,WB-Re,WB-Tr
H00080324-D01P	PUS1 purified MaxPab rabbit polyclonal antibody (D01P)	Det Ab,WB-Tr
H00005822-D01	PWP2 MaxPab rabbit polyclonal antibody (D01)	Det Ab,IP,WB-Tr
H00005822-B01P	PWP2 purified MaxPab mouse polyclonal antibody (B01P)	Det Ab,IF,WB-Tr

Antibodies

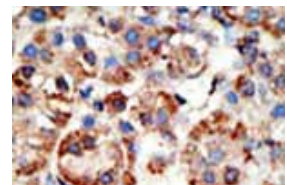
Cat. Num.	Product Name	Application
H00005822-D01P	PWP2 purified MaxPab rabbit polyclonal antibody (D01P)	Det Ab,WB-Tr
H00005822-B01	PWP2H MaxPab mouse polyclonal antibody (B01)	Det Ab,IF,WB-Tr
H00054870-B01	QRICH1 MaxPab mouse polyclonal antibody (B01)	Det Ab,WB-Tr
MAB7286	RAN monoclonal antibody, clone ARAN1	ELISA,ICC,IP,WB
PAB6653	RAN polyclonal antibody	ELISA,WB-Ce
PAB19074	RAN polyclonal antibody	ELISA,WB-Ti
PAB11745	RAN polyclonal antibody	IHC-P,WB
PAB12357	RAN polyclonal antibody	IF,IP,WB
PAB18990	RAN polyclonal antibody	ELISA,WB-Ti
H00005901-A01	RAN polyclonal antibody (A01)	ELISA,WB-Ce,WB-Re
PAB6654	RANBP1 polyclonal antibody	ELISA,WB-Ce
H00005902-D01P	RANBP1 purified MaxPab rabbit polyclonal antibody (D01P)	Det Ab,WB-Tr
H00005954-M01	RCN1 monoclonal antibody (M01), clone 1F8-E4	ELISA,S-ELISA,WB-Re
H00005954-M02	RCN1 monoclonal antibody (M02), clone 4D9-G3	ELISA,S-ELISA,WB-Re
H00005954-A01	RCN1 polyclonal antibody (A01)	ELISA,WB-Re
H00005994-M01	RFXAP monoclonal antibody (M01), clone 1B5	ELISA,S-ELISA,WB-Tr
PAB0661	RFXAP polyclonal antibody	ChIP
H00005994-A01	RFXAP polyclonal antibody (A01)	ELISA,WB-Re
H00005994-B01P	RFXAP purified MaxPab mouse polyclonal antibody (B01P)	Det Ab,WB-Tr
H00005994-D01P	RFXAP purified MaxPab rabbit polyclonal antibody (D01P)	Det Ab,WB-Ti,WB-Tr
H00009025-B01	RNF8 MaxPab mouse polyclonal antibody (B01)	Det Ab,IF,WB-Tr
PAB6337	RNF8 polyclonal antibody	ELISA,WB-Ti
PAB19253	RNF8 polyclonal antibody	ELISA,IF,WB-Ti
H00009025-B01P	RNF8 purified MaxPab mouse polyclonal antibody (B01P)	Det Ab,IF,WB-Tr
H00009025-D01P	RNF8 purified MaxPab rabbit polyclonal antibody (D01P)	Det Ab,WB-Tr
H00055795-B01P	RP11-98F14.6 purified MaxPab mouse polyclonal antibody (B01P)	Det Ab,WB-Tr
H00009837-B01	RP4-691N24.2 MaxPab mouse polyclonal antibody (B01)	Det Ab,WB-Tr
H00009837-B02	RP4-691N24.2 MaxPab mouse polyclonal antibody (B02)	Det Ab,IF,WB-Tr
H00009837-B02P	RP4-691N24.2 purified MaxPab mouse polyclonal antibody (B02P)	Det Ab,IF,WB-Tr
H00116832-M01	RPL39L monoclonal antibody (M01), clone 4A8-1B6	ELISA,IHC-P,S-ELISA,WB-Ce,WB-Re
PAB17583	RPL39L polyclonal antibody	ELISA,IHC-P
PAB17575	RPS4Y1 polyclonal antibody	ELISA,IF,WB-Ce
H00023212-D01	RRS1 MaxPab rabbit polyclonal antibody (D01)	Det Ab,IP,WB-Tr
H00023212-B02P	RRS1 purified MaxPab mouse polyclonal antibody (B02P)	Det Ab,IF,WB-Tr
H00023212-D01P	RRS1 purified MaxPab rabbit polyclonal antibody (D01P)	Det Ab,WB-Tr
H00022908-D01P	SACM1L purified MaxPab rabbit polyclonal antibody (D01P)	Det Ab,WB-Tr
H00010055-B01	SAE1 MaxPab mouse polyclonal antibody (B01)	Det Ab,IF,WB-Ti,WB-Tr
H00010055-M01	SAE1 monoclonal antibody (M01), clone 1G4-1G5	ELISA,IF,IHC-P,S-ELISA,WB-Ce,WB-Re
PAB0772	SAE1 polyclonal antibody	ELISA,WB-Tr
PAB2379	SAE1 polyclonal antibody	ELISA,IHC-P,WB-Ce,WB-Tr
PAB2380	SAE1 polyclonal antibody	ELISA,IHC-P,WB-Ce
PAB2426	SAE1 polyclonal antibody	ELISA,IHC-P,WB-Ti
PAB3840	SAE1 polyclonal antibody	ELISA,IHC-P,WB-Ti
PAB4351	SAE1 polyclonal antibody	ELISA,IHC-P,WB-Ti,WB-Tr
PAB4352	SAE1 polyclonal antibody	ELISA,IHC-P,WB-Ti,WB-Tr
PAB6479	SAE1 polyclonal antibody	ELISA,WB-Ce
PAB11270	SAE1 polyclonal antibody	ELISA,IF,WB
PAB16904	SAE1 polyclonal antibody	ELISA,WB-Ce
PAB19246	SAE1 polyclonal antibody	ELISA,WB-Ce
H00010055-B01P	SAE1 purified MaxPab mouse polyclonal antibody (B01P)	Det Ab,IF,WB-Ti,WB-Tr
H00025939-D01	SAMHD1 MaxPab rabbit polyclonal antibody (D01)	Det Ab,IP,WB-Tr
H00025939-B01P	SAMHD1 purified MaxPab mouse polyclonal antibody (B01P)	Det Ab,IF,WB-Ti,WB-Tr
H00025939-D01P	SAMHD1 purified MaxPab rabbit polyclonal antibody (D01P)	Det Ab,WB-Tr
H00025813-M04	SAMM50 monoclonal antibody (M04), clone 2A9	ELISA,WB-Ce,WB-Re
H00010284-B01	SAP18 MaxPab mouse polyclonal antibody (B01)	Det Ab,IF,WB-Tr
H00010284-D01	SAP18 MaxPab rabbit polyclonal antibody (D01)	Det Ab,IP
H00010284-M01	SAP18 monoclonal antibody (M01), clone 3B2	ELISA,IF,S-ELISA,WB-Re
H00010284-B01P	SAP18 purified MaxPab mouse polyclonal antibody (B01P)	Det Ab,IF,WB-Tr
MAB5546	SCD monoclonal antibody, clone CD.E10	ELISA,IHC,IP,WB-Ce
PAB6958	SCD polyclonal antibody	ELISA
PAB15510	SCD polyclonal antibody	WB-Ti
H00022929-M01	SEPHS1 monoclonal antibody (M01), clone 4D3-6A2	ELISA,S-ELISA
H00022929-M04	SEPHS1 monoclonal antibody (M04), clone 3G3	ELISA,S-ELISA,WB-Re,WB-Tr
PAB2748	SEPHS1 polyclonal antibody	ELISA,IHC-P,WB-Ce
PAB2749	SEPHS1 polyclonal antibody	ELISA,IHC,WB-Tr

**H00116832-M01**

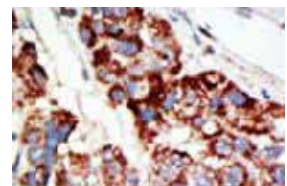
Immunoperoxidase of monoclonal antibody to RPL39L on formalin-fixed paraffin-embedded human ovary, clear cell carcinoma tissue. [antibody concentration 1ug/ml]

**H00010055-M01**

Immunoperoxidase of monoclonal antibody to SAE1 on formalin-fixed paraffin-embedded human adrenal gland. [antibody concentration 3ug/ml]

**PAB2379**

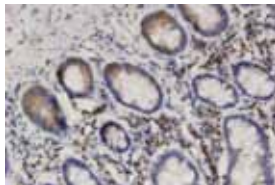
Immunoperoxidase staining in human hepatocellular carcinoma tissue reacted with the SAE1 polyclonal antibody (Cat # PAB2379)

**PAB4351**

Immunoperoxidase staining in human hepatocellular carcinoma tissue reacted with SAE1 polyclonal antibody (Cat # PAB4351)

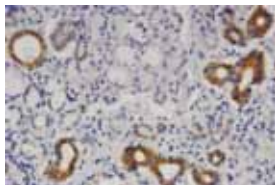
**H00010284-M01**

Immunofluorescence of monoclonal antibody to SAP18 on HeLa cell . [antibody concentration 10 ug/ml]



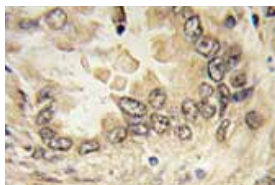
H00023176-M01

Immunoperoxidase of monoclonal antibody to SEPT8 on formalin-fixed paraffin-embedded human small intestine. [antibody concentration 3 ug/ml]



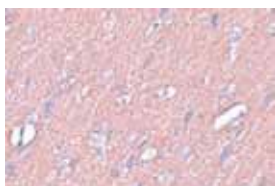
H00023176-M08

Immunoperoxidase of monoclonal antibody to SEPT8 on formalin-fixed paraffin-embedded human salivary gland. [antibody concentration 3 ug/ml]



PAB3876

Immunoperoxidase staining in human lung carcinoma tissue reacted with SOX2 polyclonal antibody (Cat # PAB3876)



PAB19177

Immunohistochemical staining of rat brain tissue with SYNGR3 polyclonal antibody (Cat # PAB19177) at 25 ug/mL dilution.



H00006857-M05

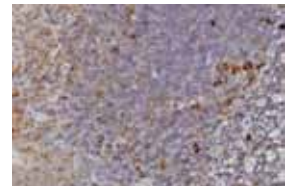
Immunoperoxidase of monoclonal antibody to SYT1 on formalin-fixed paraffin-embedded human smooth muscle. [antibody concentration 1.5 ug/ml]

Antibodies

Cat. Num.	Product Name	Application
H00022929-A01	SEPHS1 polyclonal antibody (A01)	ELISA,WB-Re
H00023176-M01	SEPT8 monoclonal antibody (M01), clone 1G3-7D1	ELISA,IHC-P,WB-Re
H00023176-M08	SEPT8 monoclonal antibody (M08), clone 3G1	ELISA,IHC-P,WB-Re
H00000871-M01	SERPINH1 monoclonal antibody (M01), clone 1D2-1A6	ELISA,S-ELISA,WB-Ce,WB-Re
PAB8774	SERPINH1 polyclonal antibody	IHC-Fr,IHC-P,IP,WB-Ti
H00000871-A01	SERPINH1 polyclonal antibody (A01)	ELISA,WB-Re
H00000871-B01P	SERPINH1 purified MaxPab mouse polyclonal antibody (B01P)	Det Ab,IF,WB-Ti,WB-Tr
PAB7603	SFRP2 polyclonal antibody	ELISA,WB-Ti
H00006611-M01	SMS monoclonal antibody (M01), clone 1G6	ELISA,S-ELISA,WB-Re,WB-Tr
H00006633-A01	SNRPD2 polyclonal antibody (A01)	ELISA,WB-Re
H00054937-D01	SOHLH2 MaxPab rabbit polyclonal antibody (D01)	Det Ab,IP,WB-Ti,WB-Tr
H00054937-D01P	SOHLH2 purified MaxPab rabbit polyclonal antibody (D01P)	Det Ab,WB-Ti,WB-Tr
MAB10031	SOX2 monoclonal antibody, clone SP76	IHC-P,WB-Ce
PAB3875	SOX2 polyclonal antibody	ELISA,WB-Ti
PAB3876	SOX2 polyclonal antibody	ELISA,Flow Cyt,IF,IHC-P,WB-Ce,WB-Tr
PAB9033	SOX2 polyclonal antibody	WB-Ce
PAB12025	SOX2 polyclonal antibody	IHC,WB-Ti
PAB12735	SOX2 polyclonal antibody	ELISA,IHC,IP,WB-Ti
PAB15562	SOX2 polyclonal antibody	IF,WB-Ce
PAB19185	SOX2 polyclonal antibody	ELISA,ICC,WB-Ce
H00006657-A01	SOX2 polyclonal antibody (A01)	ELISA,WB-Re
H00006657-D01P	SOX2 purified MaxPab rabbit polyclonal antibody (D01P)	Det Ab,WB-Ti
H00006659-M01	SOX4 monoclonal antibody (M01), clone 2C5	ELISA,S-ELISA
H00006659-M01A	SOX4 monoclonal antibody (M01A), clone 2C5	ELISA
H00006659-M02	SOX4 monoclonal antibody (M02), clone 1E5	ELISA,S-ELISA
PAB11896	SOX4 polyclonal antibody	IHC-P
PAB14092	SOX4 polyclonal antibody	ELISA,WB,WB-Tr
PAB14628	SOX4 polyclonal antibody	ELISA
PAB14638	SOX4 polyclonal antibody	ELISA
H00006659-A01	SOX4 polyclonal antibody (A01)	ELISA,WB-Re
H00051188-B01	SS18L2 MaxPab mouse polyclonal antibody (B01)	Det Ab,WB-Tr
H00051188-B02P	SS18L2 purified MaxPab mouse polyclonal antibody (B02P)	Det Ab,WB-Tr
PAB6983	STELLAR polyclonal antibody	ELISA
H00030968-D01	STOML2 MaxPab rabbit polyclonal antibody (D01)	Det Ab,IP,WB-Ce,WB-Ti,WB-Tr
H00030968-B01P	STOML2 purified MaxPab mouse polyclonal antibody (B01P)	Det Ab,WB-Ce,WB-Ti,WB-Tr
H00030968-D01P	STOML2 purified MaxPab rabbit polyclonal antibody (D01P)	Det Ab,WB-Ce,WB-Ti,WB-Tr
H00008801-B01P	SUCLG2 purified MaxPab mouse polyclonal antibody (B01P)	Det Ab,WB-Tr
H00006783-B01	SULT1E1 MaxPab mouse polyclonal antibody (B01)	Det Ab,WB-Ti,WB-Tr
H00006783-B02	SULT1E1 MaxPab mouse polyclonal antibody (B02)	Det Ab,WB-Ti,WB-Tr
H00006783-D01	SULT1E1 MaxPab rabbit polyclonal antibody (D01)	Det Ab,IP,WB-Ti,WB-Tr
PAB8703	SULT1E1 polyclonal antibody	WB-Ce
H00006783-B01P	SULT1E1 purified MaxPab mouse polyclonal antibody (B01P)	Det Ab,WB-Ti,WB-Tr
H00006783-B02P	SULT1E1 purified MaxPab mouse polyclonal antibody (B02P)	Det Ab,WB-Ti,WB-Tr
H00006783-D01P	SULT1E1 purified MaxPab rabbit polyclonal antibody (D01P)	Det Ab,WB-Ti,WB-Tr
H00006783-D02P	SULT1E1 purified MaxPab rabbit polyclonal antibody (D02P)	Det Ab,WB-Tr
H00008224-B01	SYN3 MaxPab mouse polyclonal antibody (B01)	Det Ab,WB-Ti,WB-Tr
H00008224-D01	SYN3 MaxPab rabbit polyclonal antibody (D01)	Det Ab,IP,WB-Ce,WB-Tr
H00008224-B01P	SYN3 purified MaxPab mouse polyclonal antibody (B01P)	Det Ab,WB-Ti,WB-Tr
H00008224-D01P	SYN3 purified MaxPab rabbit polyclonal antibody (D01P)	Det Ab,WB-Ce,WB-Tr
PAB6718	SYNGR3 polyclonal antibody	ELISA
PAB19177	SYNGR3 polyclonal antibody	ELISA,IHC,WB-Ti
PAB15554	SYT1 (phospho T202) polyclonal antibody	IHC,WB-Ti
H00006857-M01	SYT1 monoclonal antibody (M01), clone 3A5	ELISA,S-ELISA,WB-Ce,WB-Re
H00006857-M05	SYT1 monoclonal antibody (M05), clone 1A6	ELISA,IHC-P,S-ELISA,WB-Re
PAB12222	SYT1 polyclonal antibody	IF
PAB18674	SYT1 polyclonal antibody	ELISA,WB-Ti
H00006888-D01	TALDO1 MaxPab rabbit polyclonal antibody (D01)	Det Ab,IP,WB-Ce,WB-Ti,WB-Tr
H00006888-B01P	TALDO1 purified MaxPab mouse polyclonal antibody (B01P)	Det Ab,WB-Ti,WB-Tr
H00006888-D01P	TALDO1 purified MaxPab rabbit polyclonal antibody (D01P)	Det Ab,WB-Ce,WB-Ti,WB-Tr
H00006905-D01	TBCE MaxPab rabbit polyclonal antibody (D01)	Det Ab,IP,WB-Tr
H00006905-B01P	TBCE purified MaxPab mouse polyclonal antibody (B01P)	Det Ab,WB-Ce,WB-Ti,WB-Tr
H00006905-D01P	TBCE purified MaxPab rabbit polyclonal antibody (D01P)	Det Ab,WB-Tr
H00050945-B01	TBX22 MaxPab mouse polyclonal antibody (B01)	Det Ab,WB-Tr
H00006921-A01	TCEB1 polyclonal antibody (A01)	ELISA,WB-Re
H00009623-M01	TCL1B monoclonal antibody (M01), clone 2A12	ELISA,S-ELISA,WB-Re

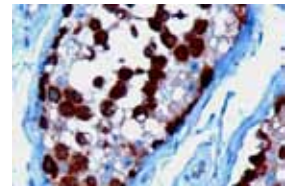
Antibodies

Cat. Num.	Product Name	Application
H00009623-D01P	TCL1B purified MaxPab rabbit polyclonal antibody (D01P)	Det Ab,WB-Tr
H00006950-M01	TCP1 monoclonal antibody (M01), clone 2B2-D6	ELISA,IF,IHC-P,S-ELISA,WB-Ce,WB-Re
PAB6585	TCP1 polyclonal antibody	ELISA,IHC-P,WB-Ti
H00006950-A01	TCP1 polyclonal antibody (A01)	ELISA,WB-Re
H00055775-B01	TDP1 MaxPab mouse polyclonal antibody (B01)	Det Ab,WB-Tr
H00055775-D01	TDP1 MaxPab rabbit polyclonal antibody (D01)	IP,WB-Tr
H00055775-M01	TDP1 monoclonal antibody (M01), clone 2A10-G2	ELISA,S-ELISA,WB-Re
MAB6511	TDP1 monoclonal antibody, clone AT1F2	ELISA,WB-Ce
H00055775-A01	TDP1 polyclonal antibody (A01)	ELISA,WB-Re
H00055775-B01P	TDP1 purified MaxPab mouse polyclonal antibody (B01P)	Det Ab,WB-Tr
H00055775-D01P	TDP1 purified MaxPab rabbit polyclonal antibody (D01P)	Det Ab,WB-Tr
H00007004-B01	TEAD4 MaxPab mouse polyclonal antibody (B01)	Det Ab,IF,WB-Tr
H00007004-M01	TEAD4 monoclonal antibody (M01), clone 5H3	ELISA,IP,RNAi-Ab,S-ELISA,WB-Ce,WB-Re,WB-Tr
H00007004-M01A	TEAD4 monoclonal antibody (M01A), clone 5H3	ELISA,WB-Ce,WB-Re
H00007004-M12	TEAD4 monoclonal antibody (M12), clone 1D10	ELISA,IHC-P,WB-Re,WB-Ti
H00007004-B01P	TEAD4 purified MaxPab mouse polyclonal antibody (B01P)	Det Ab,IF,WB-Tr
H00054937-M04	TEB1 monoclonal antibody (M04), clone 1E1	ELISA,IP,S-ELISA
H00054937-B01P	TEB1 purified MaxPab mouse polyclonal antibody (B01P)	Det Ab,WB-Tr
H00051106-B01	TFB1M MaxPab mouse polyclonal antibody (B01)	Det Ab,WB-Tr
H00051106-M01	TFB1M monoclonal antibody (M01), clone 4E4	ELISA,WB-Re,WB-Tr
PAB16639	TFB1M polyclonal antibody	ELISA,WB-Ce
H00051106-B02P	TFB1M purified MaxPab mouse polyclonal antibody (B02P)	Det Ab,WB-Tr
H00051106-D01P	TFB1M purified MaxPab rabbit polyclonal antibody (D01P)	Det Ab,WB-Tr
H00007050-M01	TGIF monoclonal antibody (M01), clone 1D12	ELISA,S-ELISA
H00007050-A01	TGIF polyclonal antibody (A01)	ELISA,WB-Ce,WB-Re
H00007050-M01A	TGIF1 monoclonal antibody (M01A), clone 1D12	ELISA
PAB2851	TGIF1 polyclonal antibody	ELISA,WB-Ce
H00007070-B01	THY1 MaxPab mouse polyclonal antibody (B01)	Det Ab,WB-Tr
H00007070-M01	THY1 monoclonal antibody (M01), clone 3F9	ELISA,WB-Re
MAB7281	THY1 monoclonal antibody, clone aThy-1A1	Flow Cyt,IP,WB-Ce
MAB2525	THY1 monoclonal antibody, clone F15-42-1	Flow Cyt,IHC-Fr,IP
PAB3877	THY1 polyclonal antibody	ELISA,IHC-P,WB-Ce
PAB18705	THY1 polyclonal antibody	ELISA,WB-Ti
H00007070-A01	THY1 polyclonal antibody (A01)	ELISA,WB-Re
H00026517-M03A	TIMM13 monoclonal antibody (M03A), clone 4F4	ELISA,WB-Re
H00026517-A01	TIMM13 polyclonal antibody (A01)	ELISA,WB-Re
H00007083-M02	TK1 monoclonal antibody (M02), clone F12	ELISA,IHC-P,IP,RNAi-Ab,S-ELISA,WB-Ce,WB-Re,WB-Tr
H00007083-M04	TK1 monoclonal antibody (M04), clone 1D10	ELISA,S-ELISA,WB-Re,WB-Tr
H00007083-M05	TK1 monoclonal antibody (M05), clone 3F9	ELISA,S-ELISA,WB-Re,WB-Tr
H00007083-M06	TK1 monoclonal antibody (M06), clone 3E2	ELISA,S-ELISA,WB-Re,WB-Tr
H00007083-M07	TK1 monoclonal antibody (M07), clone 3G10	ELISA,S-ELISA,WB-Re,WB-Tr
H00007083-M08	TK1 monoclonal antibody (M08), clone 2F7	ELISA
H00007083-M09	TK1 monoclonal antibody (M09), clone 3G11	ELISA
H00007083-M10	TK1 monoclonal antibody (M10), clone 2G8	ELISA
H00007083-M11	TK1 monoclonal antibody (M11), clone 2A2	ELISA,S-ELISA,WB-Re,WB-Tr
H00007083-M12	TK1 monoclonal antibody (M12), clone 3A8	ELISA,S-ELISA,WB-Re,WB-Tr
H00007083-M19	TK1 monoclonal antibody (M19), clone 1F12	ELISA,WB-Re
PAB5614	TK1 polyclonal antibody	ELISA,WB
PAB18228	TK1 polyclonal antibody	ELISA,IF,IHC-P,WB-Ce
H00007083-A01	TK1 polyclonal antibody (A01)	ELISA
H00007083-A02	TK1 polyclonal antibody (A02)	ELISA,WB-Re
H00007083-B01P	TK1 purified MaxPab mouse polyclonal antibody (B01P)	Det Ab,WB-Tr
H00007086-D01	TKT MaxPab rabbit polyclonal antibody (D01)	IP,WB-Ce,WB-Ti,WB-Tr
H00007086-B01P	TKT purified MaxPab mouse polyclonal antibody (B01P)	Det Ab,WB-Ti,WB-Tr
H00055863-D01	TMEM126B MaxPab rabbit polyclonal antibody (D01)	Det Ab,IP,WB-Ti,WB-Tr
H00055863-D01P	TMEM126B purified MaxPab rabbit polyclonal antibody (D01P)	Det Ab,WB-Ti,WB-Tr
H00080775-D01P	TMEM177 purified MaxPab rabbit polyclonal antibody (D01P)	Det Ab,WB-Tr
H00007138-B01P	TNNT1 purified MaxPab mouse polyclonal antibody (B01P)	Det Ab,WB-Ce,WB-Tr
H00007138-D01P	TNNT1 purified MaxPab rabbit polyclonal antibody (D01P)	Det Ab,WB-Tr
H00007138-D02P	TNNT1 purified MaxPab rabbit polyclonal antibody (D02P)	Det Ab,WB-Ti,WB-Tr
PAB7611	TOX3 polyclonal antibody	ELISA
H00007167-M01	TPI1 monoclonal antibody (M01), clone 1D10-2E2	ELISA,S-ELISA,WB-Ce,WB-Re
H00007167-M02A	TPI1 monoclonal antibody (M02A), clone 2C3	ELISA,WB-Ce,WB-Re
MAB9883	TPI1 monoclonal antibody, clone 22	ELISA,WB-Ce
MAB9884	TPI1 monoclonal antibody, clone 5	ELISA,WB-Ce



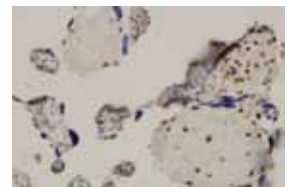
H00006950-M01

Immunoperoxidase of monoclonal antibody to TCP1 on formalin-fixed paraffin-embedded human tonsil. [antibody concentration 3ug/ml]



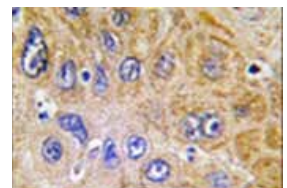
PAB6585

TCP1 polyclonal antibody (Cat # PAB6585) (10 ug/mL) staining of paraffin embedded human testis. Microwaved antigen retrieval with Tris/EDTA buffer pH9, HRP-staining.



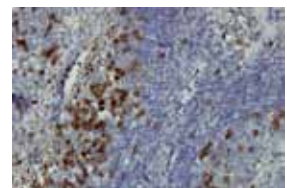
H00007004-M12

Immunoperoxidase of monoclonal antibody to TEAD4 on formalin-fixed paraffin-embedded human placenta. [antibody concentration 3 ug/ml]



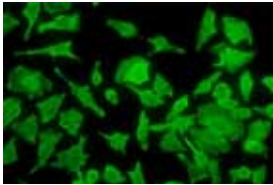
PAB3877

Immunoperoxidase staining in human hepatocellular carcinoma reacted with THY1 polyclonal antibody (Cat # PAB3877)



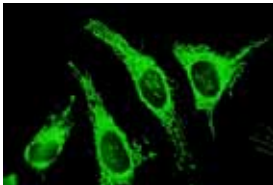
H00007083-M02

Immunoperoxidase of monoclonal antibody to TK1 on formalin-fixed paraffin-embedded human tonsil tissue. [antibody concentration 5ug/ml]



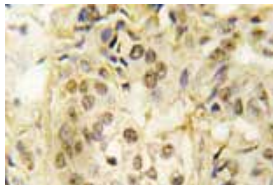
H00007178-M01

Immunofluorescence of monoclonal antibody to TPT1 on HeLa cell. [antibody concentration 30 ug/ml]



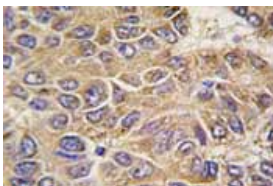
H00010131-B01

Immunofluorescence of purified MaxPab antibody to TRAP1 on HeLa cell. [antibody concentration 10 ug/ml]



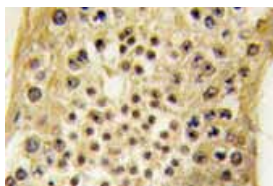
PAB1761

Immunoperoxidase staining in human breast carcinoma tissue reacted with UBA2 polyclonal antibody (Cat # PAB1761)



PAB2609

Immunoperoxidase staining in human hepatocarcinoma reacted with UGP2 polyclonal antibody (Cat # PAB2609)



PAB4186

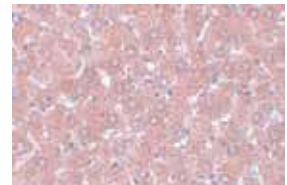
Immunoperoxidase staining in human testis tissue reacted with USP7 polyclonal antibody (Cat # PAB4186)

Antibodies

Cat. Num.	Product Name	Application
PAB6740	TPI1 polyclonal antibody	ELISA,WB-Ti
PAB4293	TPST2 polyclonal antibody	ELISA,WB-Ti
PAB4294	TPST2 polyclonal antibody	ELISA,WB-Ce
H00007178-M01	TPT1 monoclonal antibody (M01), clone 3C7	ELISA,IF,S-ELISA,WB-Ce
H00007178-M03	TPT1 monoclonal antibody (M03), clone 2C4	ELISA,S-ELISA,WB-Ce,WB-Re
H00007178-M06	TPT1 monoclonal antibody (M06), clone 2A3	ELISA,WB-Ce,WB-Re
PAB18911	TPT1 polyclonal antibody	ELISA,WB-Re
H00007178-A01	TPT1 polyclonal antibody (A01)	ELISA,WB-Re
MAB2391	TRA-1-60 monoclonal antibody, clone TRA-1-60(R)	Flow Cyt,IF,IHC,IP,WB-Ce
MAB2392	TRA-1-81 monoclonal antibody, clone TRA-1-81	Flow Cyt,IF,IHC,IP,WB-Ce
H00010131-B01	TRAP1 MaxPab mouse polyclonal antibody (B01)	Det Ab,IF,WB-Ti,WB-Tr
H00010131-D01	TRAP1 MaxPab rabbit polyclonal antibody (D01)	Det Ab,IP,WB-Ti,WB-Tr
PAB18793	TRAP1 polyclonal antibody	ELISA,WB-Ce
H00010131-B01P	TRAP1 purified MaxPab mouse polyclonal antibody (B01P)	Det Ab,IF,WB-Ti,WB-Tr
H00010131-D01P	TRAP1 purified MaxPab rabbit polyclonal antibody (D01P)	Det Ab,WB-Ti,WB-Tr
H00009830-B01	TRIM14 MaxPab mouse polyclonal antibody (B01)	Det Ab,WB-Tr
H00009830-B01P	TRIM14 purified MaxPab mouse polyclonal antibody (B01P)	Det Ab,WB-Tr
H00009830-D01P	TRIM14 purified MaxPab rabbit polyclonal antibody (D01P)	Det Ab,WB-Tr
H00004591-M01	TRIM37 monoclonal antibody (M01), clone 2D11	ELISA,S-ELISA,WB-Re
PAB6245	TRIM37 polyclonal antibody	ELISA
H00004591-A01	TRIM37 polyclonal antibody (A01)	ELISA,WB-Re
H00010376-M12	TUBA1B monoclonal antibody (M12), clone 2E8	ELISA,S-ELISA,WB-Re
MAB8159	TUBA1B monoclonal antibody, clone 17H11.F10	ELISA,IF,IHC-P,WB-Ce
PAB9934	TUBA1B polyclonal antibody	ELISA,IF,WB
H00010376-D01P	TUBA1B purified MaxPab rabbit polyclonal antibody (D01P)	Det Ab,WB-Ti,WB-Tr
H00010054-B01	UBA2 MaxPab mouse polyclonal antibody (B01)	Det Ab,IF,WB-Tr
PAB1760	UBA2 polyclonal antibody	ELISA,IHC-P,WB-Ti
PAB1761	UBA2 polyclonal antibody	ELISA,IHC-P,WB-Ti
PAB2233	UBA2 polyclonal antibody	ELISA,IHC-P,WB-Ce
PAB6480	UBA2 polyclonal antibody	ELISA
PAB14567	UBA2 polyclonal antibody	WB-Ce
PAB19247	UBA2 polyclonal antibody	ELISA,ICC,WB-Ce
H00010054-B01P	UBA2 purified MaxPab mouse polyclonal antibody (B01P)	Det Ab,IF,WB-Tr
H00009246-D01	UBE2L6 MaxPab rabbit polyclonal antibody (D01)	Det Ab,IP,WB-Tr
H00009246-M01	UBE2L6 monoclonal antibody (M01), clone 2F12-1F4	ELISA,S-ELISA,WB-Re,WB-Tr
MAB2049	UBE2L6 monoclonal antibody, clone k1H3	ELISA,WB-Ce
PAB3895	UBE2L6 polyclonal antibody	ELISA,IHC-P,WB-Ce
PAB3896	UBE2L6 polyclonal antibody	ELISA,IHC-P,WB-Ce
H00009246-A01	UBE2L6 polyclonal antibody (A01)	ELISA,WB-Re
H00009246-B01P	UBE2L6 purified MaxPab mouse polyclonal antibody (B01P)	Det Ab,WB-Ce,WB-Tr
H00009246-D01P	UBE2L6 purified MaxPab rabbit polyclonal antibody (D01P)	Det Ab,WB-Tr
H00007360-B01	UGP2 MaxPab mouse polyclonal antibody (B01)	Det Ab,WB-Tr
H00007360-M01	UGP2 monoclonal antibody (M01), clone 3H3	ELISA,RNAi-Ab,S-ELISA,WB-Ce,WB-Re,WB-Tr
PAB2608	UGP2 polyclonal antibody	ELISA,IHC-P,WB-Ce
PAB2609	UGP2 polyclonal antibody	ELISA,IHC-P,WB-Ce
H00007360-A01	UGP2 polyclonal antibody (A01)	ELISA,WB-Ce,WB-Re
H00007360-B01P	UGP2 purified MaxPab mouse polyclonal antibody (B01P)	Det Ab,WB-Tr
H00007360-D01P	UGP2 purified MaxPab rabbit polyclonal antibody (D01P)	Det Ab,WB-Tr
H00007374-M01	UNG monoclonal antibody (M01), clone 4C12	ELISA,S-ELISA
MAB1099	UNG monoclonal antibody, clone k1C12	ELISA,WB-Ce
PAB0194	UNG polyclonal antibody	WB-Ce
PAB13207	UNG polyclonal antibody	IHC-P,WB-Ce
PAB13208	UNG polyclonal antibody	IHC-P,WB-Ce
H00007374-B01P	UNG purified MaxPab mouse polyclonal antibody (B01P)	Det Ab,IF,WB-Ti,WB-Tr
H00007374-D01P	UNG purified MaxPab rabbit polyclonal antibody (D01P)	Det Ab,WB-Ti,WB-Tr
MAB8714	USP7 monoclonal antibody	ELISA,WB-Ce
PAB4185	USP7 polyclonal antibody	ELISA,IHC-P,WB-Ce
PAB4186	USP7 polyclonal antibody	ELISA,IHC-P,WB-Ce
PAB9090	USP7 polyclonal antibody	IP,WB
PAB10225	USP7 polyclonal antibody	ELISA,WB-Ce
PAB2491	UTF1 polyclonal antibody	ELISA,WB-Ce
H00007447-M01	VSNL1 monoclonal antibody (M01), clone 2F1-E3	ELISA,S-ELISA,WB-Re,WB-Tr
PAB3604	VSNL1 polyclonal antibody	ELISA,IHC-P,WB-Ti
H00007447-A01	VSNL1 polyclonal antibody (A01)	ELISA,WB-Re
H00007447-B01P	VSNL1 purified MaxPab mouse polyclonal antibody (B01P)	Det Ab,WB-Tr

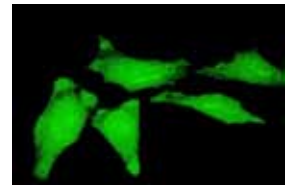
Antibodies

Cat. Num.	Product Name	Application
H00010810-B01	WASF3 MaxPab mouse polyclonal antibody (B01)	Det Ab,WB-Ti,WB-Tr
H00010810-D01	WASF3 MaxPab rabbit polyclonal antibody (D01)	Det Ab,IP,WB-Tr
H00010810-B01P	WASF3 purified MaxPab mouse polyclonal antibody (B01P)	Det Ab,WB-Ti,WB-Tr
H00010810-D01P	WASF3 purified MaxPab rabbit polyclonal antibody (D01P)	Det Ab,WB-Tr
H00093594-B01	WDR67 MaxPab mouse polyclonal antibody (B01)	Det Ab,WB-Tr
H00093594-B01P	WDR67 purified MaxPab mouse polyclonal antibody (B01P)	Det Ab,WB-Tr
PAB19222	WDR74 polyclonal antibody	ELISA,IHC,WB-Ti
PAB19223	WDR74 polyclonal antibody	ELISA,WB-Ti
H00054663-B01P	WDR74 purified MaxPab mouse polyclonal antibody (B01P)	Det Ab,IF,WB-Tr
H00054663-D01P	WDR74 purified MaxPab rabbit polyclonal antibody (D01P)	Det Ab,WB-Tr
PAB0296	XPO1 polyclonal antibody	IHC,WB-Ce
H00004904-D01	YBX1 MaxPab rabbit polyclonal antibody (D01)	Det Ab,WB-Tr
H00004904-M02	YBX1 monoclonal antibody (M02), clone 4C7	ELISA,IF,S-ELISA,WB-Re
PAB4882	YBX1 polyclonal antibody	ELISA,WB-Ce,WB-Tr
PAB4883	YBX1 polyclonal antibody	ELISA,WB-Tr
H00056242-M02	ZNF253 monoclonal antibody (M02), clone 1D7	ELISA
H00056242-D01P	ZNF253 purified MaxPab rabbit polyclonal antibody (D01P)	Det Ab,WB-Ce
H00009326-M09	ZNHIT3 monoclonal antibody (M09), clone 2F8	ELISA,S-ELISA,WB-Ce,WB-Re
H00055055-B01	ZWILCH MaxPab mouse polyclonal antibody (B01)	Det Ab,WB-Tr
H00055055-M01	ZWILCH monoclonal antibody (M01), clone 1C9	ELISA,S-ELISA,WB-Re,WB-Tr
H00055055-M11	ZWILCH monoclonal antibody (M11), clone 1C10	ELISA,WB-Tr
H00055055-D01P	ZWILCH purified MaxPab rabbit polyclonal antibody (D01P)	Det Ab,WB-Ti,WB-Tr



PAB19222

Immunohistochemical staining of rat liver tissue with WDR74 polyclonal antibody (Cat # PAB19222) at 5 ug/mL dilution.



H00004904-M02

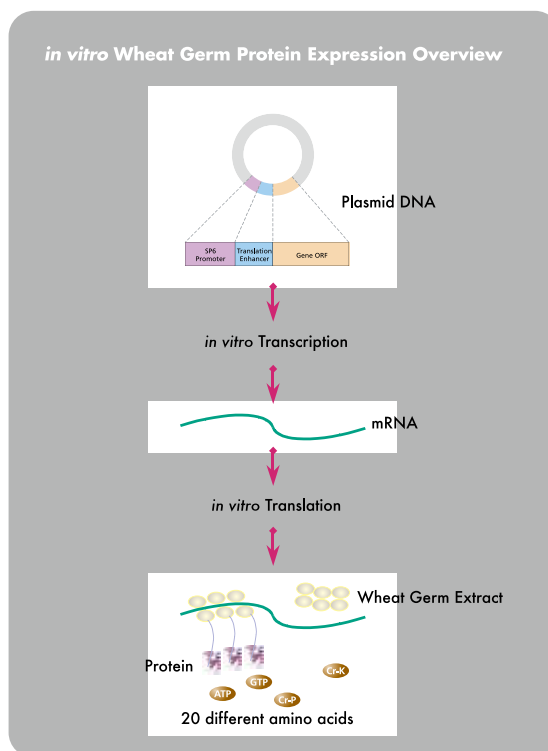
Immunofluorescence of monoclonal antibody to YBX1 on HeLa cell . [antibody concentration 10 ug/ml]

High Throughput Protein Expression by *in vitro* Wheat Germ System

Abnova's cell-free protein synthesis system is pioneered by Professor Yaeta Endo of Ehime University, Japan. This high throughput platform is based on the eukaryotic translation apparatus of wheat germ, which has significant advantages over other commonly used protein expression systems. With an expression vector designed for large scale protein expression, the platform is amenable to production of many proteins in parallel using robotic instruments. Assessment of the proteins produced by this technology showed many of them retained their correct foldings and biological functions.

Advantages:

- High Solubility
- High Yield
- High Success Rate
- Automated Expression and Purification
- Native Protein Conformation



Proteins

Cat. Num.	Product Name	Accession Number	Amino Acid Residue
H00000058-P01	ACTA1 (Human) Recombinant Protein (P01)	NP_001091.1	1a.a.-377a.a.
H00000071-P01	ACTG1 (Human) Recombinant Protein (P01)	AAH53572	1a.a.-375a.a.
H00000119-P01	ADD2 (Human) Recombinant Protein (P01)	AAH65525.1	1a.a.-726a.a.
H00000158-P01	ADSL (Human) Recombinant Protein (P01)	NP_000017.1	1a.a.-484a.a.
H00060509-P01	AGBL5 (Human) Recombinant Protein (P01)	ENSP00000323681	1a.a.-724a.a.
H00009465-P01	AKAP7 (Human) Recombinant Protein (P01)	AAH16927	1a.a.-81a.a.
H00009465-Q01	AKAP7 (Human) Recombinant Protein (Q01)	NP_057461.1	2a.a.-115a.a.
H00010327-P01	AKR1A1 (Human) Recombinant Protein (P01)	AAH00670	1a.a.-325a.a.
P3474 Bioactive	AKR1B1 (Human) Recombinant Protein	NP_001619	1a.a.-316a.a.
H00000231-P01	AKR1B1 (Human) Recombinant Protein (P01)	AAH00260.1	1a.a.-316a.a.
H00000231-Q01	AKR1B1 (Human) Recombinant Protein (Q01)	AAH10391	217a.a.-316a.a.
H00000224-P01	ALDH3A2 (Human) Recombinant Protein (P01)	AAH02430	1a.a.-508a.a.
H00000501-P01	ALDH7A1 (Human) Recombinant Protein (P01)	NP_001173.1	1a.a.-511a.a.
H00000230-P01	ALDOC (Human) Recombinant Protein (P01)	AAH03613.1	1a.a.-364a.a.
H00000262-P01	AMD1 (Human) Recombinant Protein (P01)	NP_001625.2	1a.a.-334a.a.
H00000327-P01	APEH (Human) Recombinant Protein (P01)	NP_001631.3	1a.a.-732a.a.
H00000353-P01	APRT (Human) Recombinant Protein (P01)	NP_000476.1	1a.a.-180a.a.
H00008623-P01	ASMTL (Human) Recombinant Protein (P01)	AAH02508.1	1a.a.-621a.a.
H00000471-P01	ATIC (Human) Recombinant Protein (P01)	NP_004035.2	1a.a.-592a.a.
H00027241-P01	B1 (Human) Recombinant Protein (P01)	AAH32715	1a.a.-310a.a.
H00000585-P01	BBS4 (Human) Recombinant Protein (P01)	AAH27624	1a.a.-519a.a.
H00055839-P01	BM039 (Human) Recombinant Protein (P01)	AAH07334	1a.a.-204a.a.
H00000689-P01	BTF3 (Human) Recombinant Protein (P01)	AAH08062	1a.a.-162a.a.

Proteins

Cat. Num.	Product Name	Accession Number	Locus
H00051187-P01	C15orf15 (Human) Recombinant Protein (P01)	AAH05344	1a.a.-150a.a.
H00065260-P01	C1orf163 (Human) Recombinant Protein (P01)	AAH15313	1a.a.-231a.a.
P4307	C1QBP (Human) Recombinant Protein		74a.a.-282a.a.
H00000708-P01	C1QBP (Human) Recombinant Protein (P01)	NP_001203.1	1a.a.-282a.a.
H00000708-Q01	C1QBP (Human) Recombinant Protein (Q01)	NP_001203.1	173a.a.-282a.a.
H00054976-P01	C20orf27 (Human) Recombinant Protein (P01)	AAH12196	1a.a.-174a.a.
H00025966-P01	C21orf25 (Human) Recombinant Protein (P01)	AAH62323	1a.a.-388a.a.
H00000793-P01	CALB1 (Human) Recombinant Protein (P01)	NP_004920.1	1a.a.-261a.a.
P4301	CALU (Human) Recombinant Protein		20a.a.-315a.a.
H00000813-P01	CALU (Human) Recombinant Protein (P01)	NP_001210.1	1a.a.-315a.a.
H00023624-P01	CBLC (Human) Recombinant Protein (P01)	AAH28915	1a.a.-474a.a.
H00000873-P01	CBR1 (Human) Recombinant Protein (P01)	AAH02511.1	1a.a.-277a.a.
H00007203-P01	CCT3 (Human) Recombinant Protein (P01)	AAH08019.1	1a.a.-544a.a.
H00022948-P01	CCT5 (Human) Recombinant Protein (P01)	AAH06543	1a.a.-541a.a.
H00000934-P01	CD24 (Human) Recombinant Protein (P01)	AAH07674	28a.a.-80a.a.
H00000934-P02	CD24 (Human) Recombinant Protein (P02)	AAH07674	1a.a.-80a.a.
H00027440-P01	CECR5 (Human) Recombinant Protein (P01)	AAH42540	24a.a.-423a.a.
H00009350-P01	CER1 (Human) Recombinant Protein (P01)	AAH69491.1	1a.a.-267a.a.
H00009350-Q01	CER1 (Human) Recombinant Protein (Q01)	NP_005445.1	158a.a.-266a.a.
H00025813-P01	CGI-51 (Human) Recombinant Protein (P01)	AAH07830	1a.a.-468a.a.
H00026586-P01	CKAP2 (Human) Recombinant Protein (P01)	AAH10901.1	1a.a.-161a.a.
H00001159-P01	CKMT1B (Human) Recombinant Protein (P01)	NP_066270.1	1a.a.-417a.a.
H00001159-Q01	CKMT1B (Human) Recombinant Protein (Q01)	NP_066270	327a.a.-417a.a.
H00009074-P01	CLDN6 (Human) Recombinant Protein (P01)	NP_067018.1	1a.a.-220a.a.
H00010229-P01	COQ7 (Human) Recombinant Protein (P01)	NP_057222.2	1a.a.-217a.a.
H00001350-P01	COX7C (Human) Recombinant Protein (P01)	AAH07498	1a.a.-63a.a.
H00001381-P01	CRABP1 (Human) Recombinant Protein (P01)	AAH22069.1	1a.a.-137a.a.
H00001381-P02	CRABP1 (Human) Recombinant Protein (P02)	AAH22069.1	1a.a.-137a.a.
H00001382-P01	CRABP2 (Human) Recombinant Protein (P01)	NP_001869.1	1a.a.-138a.a.
H00001389-P01	CREBL2 (Human) Recombinant Protein (P01)	NP_001301.1	1a.a.-120a.a.
H00001389-Q01	CREBL2 (Human) Recombinant Protein (Q01)	NP_001301	31a.a.-120a.a.
H00051379-P01	CRLF3 (Human) Recombinant Protein (P01)	AAH23567.2	1a.a.-442a.a.
H00056474-P01	CTPS2 (Human) Recombinant Protein (P01)	AAH34986	1a.a.-586a.a.
H00001525-P01	CXADR (Human) Recombinant Protein (P01)	AAH10536	1a.a.-365a.a.
H00001525-P02	CXADR (Human) Recombinant Protein (P02)	NP_001329.1	1a.a.-365a.a.
H00001528-P01	CYB5 (Human) Recombinant Protein (P01)	AAH15182	1a.a.-134a.a.
H00001593-P01	CYP27A1 (Human) Recombinant Protein (P01)	NP_000775.1	1a.a.-531a.a.
H00028960-P01	DCPS (Human) Recombinant Protein (P01)	AAH14532	1a.a.-337a.a.
H00001652-P01	DDT (Human) Recombinant Protein (P01)	AAH05971	1a.a.-118a.a.
H00001652-P02	DDT (Human) Recombinant Protein (P02)	AAH15508	1a.a.-118a.a.
H00029118-P01	DDX25 (Human) Recombinant Protein (P01)	AAH50360	1a.a.-483a.a.
H00001737-P01	DLAT (Human) Recombinant Protein (P01)	NP_001922.2	1a.a.-647a.a.
H00023549-P01	DNPEP (Human) Recombinant Protein (P01)	AAH00653	1a.a.-475a.a.
H00055211-P01	DPPA4 (Human) Recombinant Protein (P01)	AAH32846.2	1a.a.-304a.a.
H00011062-P01	DUS4L (Human) Recombinant Protein (P01)	NP_853559.1	1a.a.-317a.a.
H00026355-P01	E2IG5 (Human) Recombinant Protein (P01)	AAH10896	1a.a.-154a.a.
H00009521-P01	EEF1E1 (Human) Recombinant Protein (P01)	AAH05291	1a.a.-174a.a.
H00001938-P01	EEF2 (Human) Recombinant Protein (P01)	NP_001952.1	1a.a.-858a.a.
H00002114-P01	ETS2 (Human) Recombinant Protein (P01)	NP_005230.1	1a.a.-469a.a.
H00002114-Q01	ETS2 (Human) Recombinant Protein (Q01)	AAH42954	178a.a.-277a.a.
H00002115-Q01	ETV1 (Human) Recombinant Protein (Q01)	NP_004947	148a.a.-257a.a.
H00002135-P01	EXTL2 (Human) Recombinant Protein (P01)	AAH36015	39a.a.-330a.a.
H00002137-P01	EXTL3 (Human) Recombinant Protein (P01)	NP_001431.1	1a.a.-919a.a.
H00002171-P01	FABP5 (Human) Recombinant Protein (P01)	AAH19385	1a.a.-135a.a.
H00081558-P01	FAM117A (Human) Recombinant Protein (P01)	NP_110429.1	1a.a.-453a.a.
H00054478-P01	FAM64A (Human) Recombinant Protein (P01)	AAH05004.1	1a.a.-248a.a.
H00002281-P01	FKBP1B (Human) Recombinant Protein (P01)	AAH02614	1a.a.-80a.a.
P3500 Bioactive	FKBP3 (Human) Recombinant Protein	NP_002004	1a.a.-224a.a.
H00002287-P01	FKBP3 (Human) Recombinant Protein (P01)	AAH16288	1a.a.-224a.a.
P3485 Bioactive	FKBP4 (Human) Recombinant Protein	NP_002005	1a.a.-459a.a.
H00002288-P01	FKBP4 (Human) Recombinant Protein (P01)	AAH07924.1	1a.a.-459a.a.
H00002288-Q01	FKBP4 (Human) Recombinant Protein (Q01)	AAH07924	301a.a.-410a.a.
H00055055-P01	FLJ10036 (Human) Recombinant Protein (P01)	AAH36900	1a.a.-477a.a.
H00055215-P01	FLJ10719 (Human) Recombinant Protein (P01)	AAH04277	1a.a.-73a.a.
H00055744-P01	FLJ10803 (Human) Recombinant Protein (P01)	AAH56884	1a.a.-146a.a.

Proteins

Cat. Num.	Product Name	Accession Number	Locus
H00055319-P01	FLJ11184 (Human) Recombinant Protein (P01)	AAH11842.1	1a.a.-203a.a.
H00055795-P01	FLJ11305 (Human) Recombinant Protein (P01)	AAH16614	1a.a.-399a.a.
H00084900-P01	FLJ14627 (Human) Recombinant Protein (P01)	AAH11878	1a.a.-231a.a.
H00054937-P01	FLJ20449 (Human) Recombinant Protein (P01)	AAH25383	1a.a.-225a.a.
H00055011-P01	FLJ20643 (Human) Recombinant Protein (P01)	AAH01108	1a.a.-290a.a.
H00065265-P01	FLJ20989 (Human) Recombinant Protein (P01)	AAH10001	1a.a.-229a.a.
H00079675-Q01	FLJ21901 (Human) Recombinant Protein (Q01)	NP_078898	2a.a.-99a.a.
H00079568-P01	FLJ22555 (Human) Recombinant Protein (P01)	AAH17959	1a.a.-291a.a.
H00079866-P01	FLJ22624 (Human) Recombinant Protein (P01)	AAH56876	1a.a.-551a.a.
H00079887-P01	FLJ22662 (Human) Recombinant Protein (P01)	AAH00909	1a.a.-223a.a.
H00079630-P01	FLJ23221 (Human) Recombinant Protein (P01)	AAH17761	1a.a.-131a.a.
H00003169-P01	FOXA1 (Human) Recombinant Protein (P01)	NP_004487.2	1a.a.-472a.a.
H00003169-Q01	FOXA1 (Human) Recombinant Protein (Q01)	NP_004487	367a.a.-472a.a.
H00003169-Q02	FOXA1 (Human) Recombinant Protein (Q02)	NP_004487	287a.a.-370a.a.
P3409	FSCN1 (Human) Recombinant Protein	NP_003079	1a.a.-493a.a.
H00079187-P01	FSD1 (Human) Recombinant Protein (P01)		1a.a.-309a.a.
H00079187-P02	FSD1 (Human) Recombinant Protein (P02)	NP_077309.1	1a.a.-496a.a.
H00079695-P01	GALNT12 (Human) Recombinant Protein (P01)	AAH13945	1a.a.-272a.a.
P4547	GAPDH (Human) Recombinant Protein	P04406	1a.a.-335a.a.
H00002597-P01	GAPDH (Human) Recombinant Protein (P01)	AAH09081	1a.a.-335a.a.
H00002597-P02	GAPDH (Human) Recombinant Protein (P02)	NP_002037.2	1a.a.-335a.a.
H00002597-Q01	GAPDH (Human) Recombinant Protein (Q01)	NP_002037	226a.a.-335a.a.
H00002618-P01	GART (Human) Recombinant Protein (P01)	AAH38958.1	1a.a.-433a.a.
H00002626-Q01	GATA4 (Human) Recombinant Protein (Q01)	NP_002043.2	343a.a.-442a.a.
H00002627-Q01	GATA6 (Human) Recombinant Protein (Q01)	NP_005248	496a.a.-595a.a.
H00002639-P01	GCDH (Human) Recombinant Protein (P01)	NP_000150.1	1a.a.-438a.a.
H00079833-P01	GEMIN6 (Human) Recombinant Protein (P01)	AAH18195	1a.a.-167a.a.
H00009945-P01	GFPT2 (Human) Recombinant Protein (P01)	AAH00012.1	1a.a.-682a.a.
P3478 Bioactive	GLO1 (Human) Recombinant Protein	NP_006699	1a.a.-184a.a.
H00002739-P01	GLO1 (Human) Recombinant Protein (P01)	AAH11365	1a.a.-184a.a.
H00002739-Q01	GLO1 (Human) Recombinant Protein (Q01)	AAH11365.1	1a.a.-98a.a.
H00002762-P01	GMD5 (Human) Recombinant Protein (P01)	AAH00117	1a.a.-372a.a.
H00010399-P01	GNB2L1 (Human) Recombinant Protein (P01)	AAH14788.1	1a.a.-317a.a.
P4118	GREM2 (Human) Recombinant Protein	Q9H772	
H00064388-P01	GREM2 (Human) Recombinant Protein (P01)	AAH46632.1	1a.a.-168a.a.
H00002960-P01	GTF2E1 (Human) Recombinant Protein (P01)	NP_005504.2	1a.a.-439a.a.
H00002960-Q01	GTF2E1 (Human) Recombinant Protein (Q01)	NP_005504	41a.a.-140a.a.
H00002966-P01	GTF2H2 (Human) Recombinant Protein (P01)	AAH05345	1a.a.-165a.a.
H00010542-P01	HBXIP (Human) Recombinant Protein (P01)	AAH62619	83a.a.-173a.a.
P3732	HDAC2 (Human) Recombinant Protein	NP_001518	1a.a.-488a.a.
H00003070-P01	HELLS (Human) Recombinant Protein (P01)	AAH30963	1a.a.-348a.a.
H00010363-P01	HMG20A (Human) Recombinant Protein (P01)	NP_060670.1	1a.a.-347a.a.
H00010363-Q01	HMG20A (Human) Recombinant Protein (Q01)	NP_060670.1	153a.a.-262a.a.
H00003172-P01	HNF4A (Human) Recombinant Protein (P01)	NP_849180.1	1a.a.-464a.a.
H00003172-Q01	HNF4A (Human) Recombinant Protein (Q01)	NP_000448	324a.a.-423a.a.
H00003184-P01	HNRPD (Human) Recombinant Protein (P01)	NP_112738.1	1a.a.-355a.a.
H00011145-P01	HRASLS3 (Human) Recombinant Protein (P01)	AAH01387	1a.a.-162a.a.
H00003291-P01	HSD11B2 (Human) Recombinant Protein (P01)	AAH64536.1	1a.a.-405a.a.
H00003291-Q01	HSD11B2 (Human) Recombinant Protein (Q01)	AAH64536.1	71a.a.-170a.a.
H00051491-P01	HSPC111 (Human) Recombinant Protein (P01)	AAH40106	1a.a.-178a.a.
H00051504-P01	HSPC152 (Human) Recombinant Protein (P01)	AAH17172	1a.a.-125a.a.
H00003336-P01	HSPE1 (Human) Recombinant Protein (P01)	AAH23518	1a.a.-102a.a.
H00029902-P01	HSU79274 (Human) Recombinant Protein (P01)	AAH20967	1a.a.-273a.a.
H00003397-P01	ID1 (Human) Recombinant Protein (P01)	AAH00613.1	1a.a.-155a.a.
H00003417-P01	IDH1 (Human) Recombinant Protein (P01)	AAH12846	1a.a.-414a.a.
H00003417-P02	IDH1 (Human) Recombinant Protein (P02)	NP_005887.2	1a.a.-414a.a.
H00003419-P01	IDH3A (Human) Recombinant Protein (P01)	AAH21967	1a.a.-366a.a.
H00010437-P01	IFI30 (Human) Recombinant Protein (P01)	NP_006323.2	1a.a.-250a.a.
H00009452-P01	ITM2A (Human) Recombinant Protein (P01)	AAH40437	1a.a.-263a.a.
H00003712-P01	IVD (Human) Recombinant Protein (P01)	AAH17202	1a.a.-423a.a.
H00010376-P01	K-ALPHA-1 (Human) Recombinant Protein (P01)	AAH08659	1a.a.-451a.a.
H00010376-P02	K-ALPHA-1 (Human) Recombinant Protein (P02)	AAH15883	1a.a.-451a.a.
H00010376-P03	K-ALPHA-1 (Human) Recombinant Protein (P03)	AAH10494	1a.a.-451a.a.
H00010300-P01	KATNB1 (Human) Recombinant Protein (P01)	AAH01353	1a.a.-655a.a.
H00009817-P01	KEAP1 (Human) Recombinant Protein (P01)	AAH02417.1	1a.a.-624a.a.

Proteins

Cat. Num.	Product Name	Accession Number	Locus
H00023392-P01	KIAA0368 (Human) Recombinant Protein (P01)	AAH21127.1	1a.a.-519a.a.
H00023095-P01	KIF1B (Human) Recombinant Protein (P01)	AAH01415	1a.a.-579a.a.
H00055353-P01	LAPTM4B (Human) Recombinant Protein (P01)	AAH14129	1a.a.-226a.a.
H00009079-P01	LDB2 (Human) Recombinant Protein (P01)	AAH34019	1a.a.-373a.a.
H00011061-P01	LECT1 (Human) Recombinant Protein (P01)	NP_008946.1	1a.a.-334a.a.
H00023507-P01	LRRC8B (Human) Recombinant Protein (P01)	NP_056165.1	1a.a.-803a.a.
H00057633-P01	LRRN1 (Human) Recombinant Protein (P01)	CAL37408.1	1a.a.-716a.a.
H00057134-P01	MAN1C1 (Human) Recombinant Protein (P01)	NP_065112.1	1a.a.-630a.a.
H00057134-Q01	MAN1C1 (Human) Recombinant Protein (Q01)	NP_065112.1	463a.a.-565a.a.
H00058478-P01	MASA (Human) Recombinant Protein (P01)	AAH01317	1a.a.-115a.a.
H00027430-P01	MAT2B (Human) Recombinant Protein (P01)	AAH05218	1a.a.-323a.a.
P3512	MDH1 (Human) Recombinant Protein	NP_005908	1a.a.-334a.a.
H00004190-P01	MDH1 (Human) Recombinant Protein (P01)	AAH01484.1	1a.a.-334a.a.
H00004190-Q01	MDH1 (Human) Recombinant Protein (Q01)	AAH01484.1	101a.a.-193a.a.
H00079154-P01	MGC4172 (Human) Recombinant Protein (P01)	AAH02731	1a.a.-181a.a.
H00004291-P01	MLF1 (Human) Recombinant Protein (P01)	NP_071888.1	1a.a.-268a.a.
H00008079-P01	MLF2 (Human) Recombinant Protein (P01)	AAH00898	1a.a.-248a.a.
H00051678-P01	MPP6 (Human) Recombinant Protein (P01)	AAH23638	1a.a.-540a.a.
H00065258-P01	MPPE1 (Human) Recombinant Protein (P01)	AAH02877.1	34a.a.-333a.a.
H00054948-P01	MRPL16 (Human) Recombinant Protein (P01)	NP_060310.1	1a.a.-251a.a.
H00063875-P01	MRPL17 (Human) Recombinant Protein (P01)	NP_071344.1	1a.a.-175a.a.
H00064981-P01	MRPL34 (Human) Recombinant Protein (P01)	NP_076426.1	1a.a.-92a.a.
H00051021-P01	MRPS16 (Human) Recombinant Protein (P01)	AAH21106	1a.a.-137a.a.
H00023107-P01	MRPS27 (Human) Recombinant Protein (P01)	AAH30521	51a.a.-168a.a.
H00004478-P01	MSN (Human) Recombinant Protein (P01)	AAH17293.1	1a.a.-577a.a.
H00004478-Q01	MSN (Human) Recombinant Protein (Q01)	NP_002435	422a.a.-531a.a.
H00004522-P01	MTHFD1 (Human) Recombinant Protein (P01)	AAH09806	1a.a.-935a.a.
H00009107-P01	MTMR6 (Human) Recombinant Protein (P01)	AAH40012	1a.a.-621a.a.
P3718	NANOG (Human) Recombinant Protein	NP_079141	1a.a.-154a.a.
P3727	NANOG (Human) Recombinant Protein	NP_079141	1a.a.-305a.a.
H00004674-P01	NAP1L2 (Human) Recombinant Protein (P01)	AAH26325	1a.a.-460a.a.
H00004674-P02	NAP1L2 (Human) Recombinant Protein (P02)	AAH26325.1	1a.a.-460a.a.
H00004678-P01	NASP (Human) Recombinant Protein (P01)	NP_751896.1	1a.a.-790a.a.
H00054539-P01	NDUFB11 (Human) Recombinant Protein (P01)	AAH10665	1a.a.-153a.a.
H00009603-P01	NFE2L3 (Human) Recombinant Protein (P01)	NP_004280.4	1a.a.-694a.a.
H00009603-Q01	NFE2L3 (Human) Recombinant Protein (Q01)	NP_004280	585a.a.-694a.a.
H00027247-P01	NFU1 (Human) Recombinant Protein (P01)	NP_001002755.1	1a.a.-254a.a.
H00004801-P01	NFYB (Human) Recombinant Protein (P01)	AAH05317	1a.a.-207a.a.
H00004885-P01	NPTX2 (Human) Recombinant Protein (P01)	NP_002514.1	1a.a.-431a.a.
H00004835-P01	NQO2 (Human) Recombinant Protein (P01)	AAH06096.1	1a.a.-231a.a.
H00008856-P01	NR112 (Human) Recombinant Protein (P01)	NP_003880.3	1a.a.-434a.a.
H00008856-Q01	NR112 (Human) Recombinant Protein (Q01)	AAH17304	279a.a.-378a.a.
H00079366-P01	NSBP1 (Human) Recombinant Protein (P01)	AAH05342	1a.a.-282a.a.
H00079366-P02	NSBP1 (Human) Recombinant Protein (P02)	NP_110390.1	1a.a.-282a.a.
H00004904-Q01	NSEP1 (Human) Recombinant Protein (Q01)	NP_004550	51a.a.-139a.a.
H00004922-P01	NTS (Human) Recombinant Protein (P01)	NP_006174.1	1a.a.-170a.a.
H00004922-Q01	NTS (Human) Recombinant Protein (Q01)	AAH10918	71a.a.-170a.a.
H00004521-P01	NUDT1 (Human) Recombinant Protein (P01)	AAH14618	1a.a.-179a.a.
H00079023-P01	NUP37 (Human) Recombinant Protein (P01)	NP_076962.2	1a.a.-326a.a.
H00053371-P01	NUP54 (Human) Recombinant Protein (P01)	NP_059122.2	1a.a.-507a.a.
H00004942-P01	OAT (Human) Recombinant Protein (P01)	NP_000265.1	1a.a.-439a.a.
H00008473-P01	OGT (Human) Recombinant Protein (P01)	NP_858058.1	1a.a.-1046a.a.
H00011339-P01	OIP5 (Human) Recombinant Protein (P01)	AAH15050	1a.a.-229a.a.
H00114884-P01	OSBPL10 (Human) Recombinant Protein (P01)	NP_060254.2	1a.a.-764a.a.
H00005018-P01	OXA1L (Human) Recombinant Protein (P01)	Q15070	1a.a.-435a.a.
H00010606-P01	PAICS (Human) Recombinant Protein (P01)	AAH10273	1a.a.-425a.a.
H00009060-P01	PAPSS2 (Human) Recombinant Protein (P01)	NP_004661.2	1a.a.-614a.a.
H00009060-Q01	PAPSS2 (Human) Recombinant Protein (Q01)	NP_004661	513a.a.-612a.a.
H00005096-P01	PCCB (Human) Recombinant Protein (P01)	NP_000523.2	1a.a.-539a.a.
H00005141-P01	PDE4A (Human) Recombinant Protein (P01)	NP_006193.1	1a.a.-647a.a.
H00010630-P01	PDPN (Human) Recombinant Protein (P01)	AAH22812.2	1a.a.-238a.a.
H00005203-P01	PFDN4 (Human) Recombinant Protein (P01)	NP_002614.2	1a.a.-134a.a.
H00005216-P01	PFN1 (Human) Recombinant Protein (P01)	AAH06768	1a.a.-140a.a.
H00005216-P02	PFN1 (Human) Recombinant Protein (P02)	AAH15164	1a.a.-140a.a.
H00005223-P01	PGAM1 (Human) Recombinant Protein (P01)	AAH11678.1	1a.a.-254a.a.

Proteins

Cat. Num.	Product Name	Accession Number	Locus
H00026227-P01	PHGDH (Human) Recombinant Protein (P01)	AAH11262.1	1a.a.-533a.a.
H00051268-P01	PIPOX (Human) Recombinant Protein (P01)	AAH08960	48a.a.-390a.a.
H00051268-Q01	PIPOX (Human) Recombinant Protein (Q01)	AAH27622.1	292a.a.-384a.a.
H00005308-P01	PITX2 (Human) Recombinant Protein (P01)	AAH13998	1a.a.-324a.a.
H00005308-Q01	PITX2 (Human) Recombinant Protein (Q01)	NP_700476	60a.a.-159a.a.
H00005308-Q02	PITX2 (Human) Recombinant Protein (Q02)	NP_700476	82a.a.-170a.a.
H00005308-Q03	PITX2 (Human) Recombinant Protein (Q03)	NP_700476	189a.a.-270a.a.
H00005354-Q01	PLP1 (Human) Recombinant Protein (Q01)	NP_000524	177a.a.-232a.a.
H00005360-P01	PLTP (Human) Recombinant Protein (P01)	AAH05045	19a.a.-441a.a.
H00005366-P01	PMAIP1 (Human) Recombinant Protein (P01)	AAH32663	1a.a.-136a.a.
H00010687-P01	PNMA2 (Human) Recombinant Protein (P01)	AAH62301	1a.a.-364a.a.
H00005433-P01	POLR2D (Human) Recombinant Protein (P01)	AAH17205	1a.a.-142a.a.
H00005447-P01	POR (Human) Recombinant Protein (P01)	AAH34277.1	1a.a.-680a.a.
H00005460-P01	POU5F1 (Human) Recombinant Protein (P01)	ENSP00000365420	1a.a.-164a.a.
P3460	PPIA (Human) Recombinant Protein	NP_066953	1a.a.-165a.a.
H00005478-P01	PPIA (Human) Recombinant Protein (P01)	AAH00689.1	1a.a.-165a.a.
H00005478-P02	PPIA (Human) Recombinant Protein (P02)	NP_001008741.1	1a.a.-165a.a.
H00005495-P01	PPM1B (Human) Recombinant Protein (P01)	AAH12002	1a.a.-192a.a.
H00005501-P01	PPP1CC (Human) Recombinant Protein (P01)	AAH14073	1a.a.-323a.a.
H00005521-P01	PPP2R2B (Human) Recombinant Protein (P01)	AAH31790	1a.a.-443a.a.
H00005521-P02	PPP2R2B (Human) Recombinant Protein (P02)	NP_004567.1	1a.a.-443a.a.
H00005521-Q01	PPP2R2B (Human) Recombinant Protein (Q01)	AAH31790	101a.a.-200a.a.
H00005521-Q02	PPP2R2B (Human) Recombinant Protein (Q02)	AAH31790.1	22a.a.-128a.a.
H00005547-P01	PRCP (Human) Recombinant Protein (P01)	AAH01500.1	1a.a.-496a.a.
H00005547-P02	PRCP (Human) Recombinant Protein (P02)	NP_005031.1	1a.a.-496a.a.
P3465	PRDX1 (Human) Recombinant Protein	NP_002565	1a.a.-199a.a.
P4543	PRDX1 (Human) Recombinant Protein	Q06830	1a.a.-199a.a.
H00005052-P01	PRDX1 (Human) Recombinant Protein (P01)	AAH07063	1a.a.-199a.a.
H00005683-P01	PSMA2 (Human) Recombinant Protein (P01)	AAH47697	1a.a.-234a.a.
H00005684-P01	PSMA3 (Human) Recombinant Protein (P01)	AAH05265	1a.a.-248a.a.
H00005686-P01	PSMA5 (Human) Recombinant Protein (P01)	NP_002781.2	1a.a.-241a.a.
H00005686-Q01	PSMA5 (Human) Recombinant Protein (Q01)	NP_002781	132a.a.-241a.a.
H00005692-P01	PSMB4 (Human) Recombinant Protein (P01)	AAH00331	1a.a.-264a.a.
H00005694-P01	PSMB6 (Human) Recombinant Protein (P01)	AAH00835	1a.a.-239a.a.
H00005696-P01	PSMB8 (Human) Recombinant Protein (P01)	NP_004150.1	1a.a.-272a.a.
H00005696-Q01	PSMB8 (Human) Recombinant Protein (Q01)	AAH01114	173a.a.-272a.a.
H00055037-P01	PTCD3 (Human) Recombinant Protein (P01)	NP_060422.4	1a.a.-689a.a.
H00080324-P01	PUS1 (Human) Recombinant Protein (P01)	AAH02901	1a.a.-399a.a.
H00054870-P01	QRICH1 (Human) Recombinant Protein (P01)	NP_060200.2	1a.a.-776a.a.
H00005901-P01	RAN (Human) Recombinant Protein (P01)	AAH16654	1a.a.-216a.a.
H00005901-P02	RAN (Human) Recombinant Protein (P02)	AAH14901.1	1a.a.-216a.a.
H00005902-P01	RANBP1 (Human) Recombinant Protein (P01)	CAK54587.1	1a.a.-201a.a.
H00005931-P01	RBBP7 (Human) Recombinant Protein (P01)	NP_002884.1	1a.a.-425a.a.
H00005954-P01	RCN1 (Human) Recombinant Protein (P01)	AAH10120	31a.a.-331a.a.
H00005994-P01	RFXAP (Human) Recombinant Protein (P01)	AAH26088.1	1a.a.-272a.a.
H00005994-Q01	RFXAP (Human) Recombinant Protein (Q01)	NP_000529	179a.a.-244a.a.
H00009025-P01	RNF8 (Human) Recombinant Protein (P01)	AAH07517	1a.a.-485a.a.
H00010959-P01	RNP24 (Human) Recombinant Protein (P01)	AAH25957	21a.a.-201a.a.
H00009837-P01	RP4-691N24.2 (Human) Recombinant Protein (P01)	AAH12542.1	1a.a.-196a.a.
H00023521-P01	RPL13A (Human) Recombinant Protein (P01)	NP_036555.1	1a.a.-203a.a.
H00006152-P01	RPL24 (Human) Recombinant Protein (P01)	NP_000977.1	1a.a.-157a.a.
H00116832-P01	RPL39L (Human) Recombinant Protein (P01)	AAH12328	1a.a.-51a.a.
H00006229-P01	RPS24 (Human) Recombinant Protein (P01)	NP_148982.1	1a.a.-130a.a.
H00006192-P01	RPS4Y1 (Human) Recombinant Protein (P01)	NP_000999.1	1a.a.-263a.a.
H00023212-P01	RRS1 (Human) Recombinant Protein (P01)	NP_055984.1	1a.a.-365a.a.
H00022908-P01	SACM1L (Human) Recombinant Protein (P01)	AAH16559.1	1a.a.-587a.a.
H00010055-P01	SAE1 (Human) Recombinant Protein (P01)	AAH00344	1a.a.-346a.a.
H00010055-P02	SAE1 (Human) Recombinant Protein (P02)	AAH18271	1a.a.-346a.a.
H00025939-P01	SAMHD1 (Human) Recombinant Protein (P01)	NP_056289.2	1a.a.-626a.a.
H00010284-P01	SAP18 (Human) Recombinant Protein (P01)	AAH30836	1a.a.-153a.a.
H00022929-P01	SEPHS1 (Human) Recombinant Protein (P01)	AAH00941	1a.a.-392a.a.
H00022929-Q01	SEPHS1 (Human) Recombinant Protein (Q01)	NP_036379	1a.a.-96a.a.
H00023176-P01	SEPT8 (Human) Recombinant Protein (P01)	AAH01329	1a.a.-258a.a.
H00000871-P01	SERPINH1 (Human) Recombinant Protein (P01)	AAH14623.1	1a.a.-418a.a.
H00006611-P01	SMS (Human) Recombinant Protein (P01)	AAH09898.1	1a.a.-366a.a.

Proteins

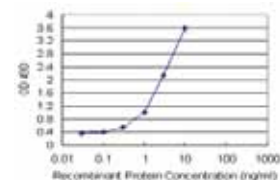
Cat. Num.	Product Name	Accession Number	Locus
H00006633-P01	SNRPD2 (Human) Recombinant Protein (P01)	AAH00486	1a.a.-118a.a.
P3374	SOX2 (Human) Recombinant Protein	NP_003097	1a.a.-317a.a.
H00006657-P01	SOX2 (Human) Recombinant Protein (P01)	AAH13923	1a.a.-317a.a.
H00006657-Q01	SOX2 (Human) Recombinant Protein (Q01)	NP_003097	155a.a.-245a.a.
H00006659-Q01	SOX4 (Human) Recombinant Protein (Q01)	NP_003098	45a.a.-136a.a.
H00051188-P01	SS18L2 (Human) Recombinant Protein (P01)	AAH17804	1a.a.-77a.a.
H00030968-P01	STOML2 (Human) Recombinant Protein (P01)	NP_038470.1	1a.a.-356a.a.
H00008803-P01	SUCLA2 (Human) Recombinant Protein (P01)	AAH27587	1a.a.-463a.a.
H00008801-P01	SUCLG2 (Human) Recombinant Protein (P01)	NP_003839.1	1a.a.-384a.a.
H00006783-P01	SULT1E1 (Human) Recombinant Protein (P01)	AAH27956.1	1a.a.-294a.a.
H00008224-P01	SYN3 (Human) Recombinant Protein (P01)	AAH75065.1	1a.a.-580a.a.
H00009143-P01	SYNGR3 (Human) Recombinant Protein (P01)	AAH09568	1a.a.-145a.a.
H00006857-P01	SYT1 (Human) Recombinant Protein (P01)	AAH58917	1a.a.-422a.a.
H00006888-P01	TALDO1 (Human) Recombinant Protein (P01)	NP_006746.1	1a.a.-337a.a.
H00006905-P01	TBCE (Human) Recombinant Protein (P01)	NP_003184.1	1a.a.-527a.a.
H00006921-P01	TCEB1 (Human) Recombinant Protein (P01)	AAH13809	1a.a.-112a.a.
H00009623-P01	TCL1B (Human) Recombinant Protein (P01)	AAH51000	1a.a.-128a.a.
H00006950-P01	TCP1 (Human) Recombinant Protein (P01)	AAH00665	1a.a.-556a.a.
H00055775-P01	TDP1 (Human) Recombinant Protein (P01)	AAH15474.1	1a.a.-608a.a.
H00055775-Q01	TDP1 (Human) Recombinant Protein (Q01)	AAH15474.1	121a.a.-218a.a.
H00007004-P01	TEAD4 (Human) Recombinant Protein (P01)	AAH15497	1a.a.-361a.a.
H00007004-Q01	TEAD4 (Human) Recombinant Protein (Q01)	NP_003204	151a.a.-260a.a.
H00051106-P01	TFB1M (Human) Recombinant Protein (P01)	AAH17788	1a.a.-346a.a.
H00007050-P01	TGIF (Human) Recombinant Protein (P01)	AAH00814	1a.a.-272a.a.
H00007050-Q01	TGIF (Human) Recombinant Protein (Q01)	NP_003235	163a.a.-272a.a.
H00007070-P01	THY1 (Human) Recombinant Protein (P01)	AAH05175	1a.a.-161a.a.
H00007070-Q01	THY1 (Human) Recombinant Protein (Q01)	NP_006279	26a.a.-134a.a.
H00026517-P01	TIMM13 (Human) Recombinant Protein (P01)	AAH08607	1a.a.-95a.a.
H00007083-P01	TK1 (Human) Recombinant Protein (P01)	AAH07986.1	1a.a.-234a.a.
H00007083-Q01	TK1 (Human) Recombinant Protein (Q01)	NP_003249	157a.a.-234a.a.
H00007086-P02	TKT (Human) Recombinant Protein (P02)	NP_001055.1	1a.a.-623a.a.
H00055863-P01	TMEM126B (Human) Recombinant Protein (P01)	NP_060950.2	1a.a.-200a.a.
H00027324-P01	TOX3 (Human) Recombinant Protein (P01)	XP_946123.1	1a.a.-576a.a.
P3741	TPI1 (Human) Recombinant Protein	NP_000356.1	
H00007167-P01	TPI1 (Human) Recombinant Protein (P01)	AAH07086.1	1a.a.-249a.a.
H00007178-P01	TPT1 (Human) Recombinant Protein (P01)	NP_003286.1	1a.a.-172a.a.
H00007178-Q01	TPT1 (Human) Recombinant Protein (Q01)	AAH22436	35a.a.-138a.a.
H00010131-P01	TRAP1 (Human) Recombinant Protein (P01)	NP_057376.1	1a.a.-704a.a.
H00009830-P01	TRIM14 (Human) Recombinant Protein (P01)	NP_150089.1	1a.a.-442a.a.
H00004591-Q01	TRIM37 (Human) Recombinant Protein (Q01)	NP_056109	865a.a.-964a.a.
H00010054-P01	UBA2 (Human) Recombinant Protein (P01)	NP_005490.1	1a.a.-640a.a.
H00009246-P01	UBE2L6 (Human) Recombinant Protein (P01)	AAH32491	1a.a.-153a.a.
H00007360-P01	UGP2 (Human) Recombinant Protein (P01)	NP_006750.3	1a.a.-508a.a.
H00007360-Q01	UGP2 (Human) Recombinant Protein (Q01)	NP_001001521	1a.a.-90a.a.
H00007374-P01	UNG (Human) Recombinant Protein (P01)	NP_003353.1	1a.a.-304a.a.
H00007374-Q01	UNG (Human) Recombinant Protein (Q01)	AAH50634	86a.a.-190a.a.
H00007874-Q01	USP7 (Human) Recombinant Protein (Q01)	NP_003461.1	13a.a.-110a.a.
H00007447-P01	VSNL1 (Human) Recombinant Protein (P01)	AAH22012	1a.a.-191a.a.
H00010810-P01	WASF3 (Human) Recombinant Protein (P01)	AAH50283.1	1a.a.-499a.a.
H00009948-P01	WDR1 (Human) Recombinant Protein (P01)	NP_059830.1	1a.a.-606a.a.
H00023302-P01	WSCD1 (Human) Recombinant Protein (P01)	AAH09975.1	1a.a.-575a.a.
H00007514-P01	XPO1 (Human) Recombinant Protein (P01)	AAH32847.1	1a.a.-1071a.a.
H00004904-P01	YBX1 (Human) Recombinant Protein (P01)	NP_004550.2	1a.a.-324a.a.
H00056242-P01	ZNF253 (Human) Recombinant Protein (P01)	NP_066385.2	1a.a.-499a.a.
H00056242-Q01	ZNF253 (Human) Recombinant Protein (Q01)	NP_066385.2	91a.a.-180a.a.
H00009326-P01	ZNHIT3 (Human) Recombinant Protein (P01)	AAH17931	1a.a.-155a.a.

Peptides

Cat. Num.	Product Name	Sequence	Immunogen of
P1225	AKR1A1 (C-term) Peptide	C terminus of Human AKR1A1	PAB2580
P1224	AKR1A1 (N-term) Peptide	N terminus of Human AKR1A1	PAB2579
P1226	AKR1B1 (C-term) Peptide	C terminus of Human AKR1B1	PAB2581
P0447	ALDH3A2 (C-term) Peptide	C terminus of Human ALDH3A2	PAB3126
P1227	ALDOC (C-term) Peptide	C terminus of Human ALDOC	PAB2583
P2575	BBS4 (Center) Peptide	Center region of Human BBS4	PAB2963
P2865	C1QBP (Center) Peptide	Center region of Human C1QBP	PAB3524
P2864	C1QBP (C-term) Peptide	C terminus of Human C1QBP	PAB3523
P0322	CBLC (C-term) Peptide	C terminus of Human CBLC	PAB1697
P0321	CBLC (N-term) Peptide	N terminus of Human CBLC	PAB1698
P2576	CBR1 (C-term) Peptide	C terminus of Human CBR1	PAB2964
P1245	CYP26A1 (Center) Peptide	Center region of Human CYP26A1	PAB2601
P0410	DPPA4 (N-term) Peptide	N terminus of Human DPPA4	PAB3086
P2578	EPRS (N-term) Peptide	N terminus of Human EPRS	PAB2965
P0362	GATA4 (C-term) Peptide	C terminus of Human GATA4	PAB2480
P1667	GATA6 Y271 Peptide	Amino acid near Y271 of Human GATA6	PAB4926
P0210	HDAC2 (C-term) Peptide	C terminus of Human HDAC2	PAB2328
P0684	IDH3A (C-term) Peptide	C terminus of Human IDH3A	PAB3735
P2499	LARS (C-term) Peptide	C terminus of Human LARS	PAB2886
P1217	LECT1 (C-term) Peptide	C terminus of Human LECT1	PAB2573
P1216	LECT1 (N-term) Peptide	N terminus of Human LECT1	PAB2572
P0184	MBD2 (C-term) Peptide	C terminus of Human MBD2	PAB2235
P0183	MBD2 (N-term) Peptide	N terminus of Human MBD2	PAB2234
P2073	MTMR6 (C-term) Peptide	C terminus of Human MTMR6	PAB4503
P0479	NANOG (Center) Peptide	Center region of Human NANOG	PAB1887
P0478	NANOG (N-term) Peptide	N terminus of Human NANOG	PAB1886
P1204	NPTX2 (Center) Peptide	Center region of Human NPTX2	PAB2557
P1203	NPTX2 (C-term) Peptide	C terminus of Human NPTX2	PAB2556
P0680	NUP54 (Center) Peptide	Center region of Human NUP54	PAB3731
P3094	PAPSS2 (C-term) Peptide	C terminus of Human PAPSS2	PAB3306
P0808	PDPN (N-term) Peptide	N terminus of Human PDPN	PAB3850
P0397	PITX2 (C-term) Peptide	C terminus of Human PITX2	PAB3073
P0836	POU5F1 (N-term) Peptide	N terminus of Human POU5F1	PAB3868
P0838	POU5F1 E125 Peptide	Amino acid near E125 of Human POU5F1	PAB3870
P3313	PPM1B (Center) Peptide	Center region of Human PPM1B	PAB4159
P3265	PPP1CC (C-term) Peptide	C terminus of Human PPP1CC	PAB4112
P3264	PPP1CC (N-term) Peptide	N terminus of Human PPP1CC	PAB4111
P0422	PSMA5 (Center) Peptide	Center region of Human PSMA5	PAB3101
P0751	PTCD3 (N-term) Peptide	N terminus of Human PTCD3	PAB3802
P0271	SAE1 (C-term) Peptide	C terminus of Human SAE1	PAB2380
P0798	SAE1 (C-term) Peptide	C terminus of Human SAE1	PAB3840
P1118	SAE1 (C-term) Peptide	C terminus of Human SAE1	PAB4352
P0270	SAE1 (N-term) Peptide	N terminus of Human SAE1	PAB2379
P1117	SAE1 (N-term) Peptide	N terminus of Human SAE1	PAB4351
P2351	SEPHS1 (C-term) Peptide	C terminus of Human SEPHS1	PAB2749
P2350	SEPHS1 (N-term) Peptide	N terminus of Human SEPHS1	PAB2748
P0842	SOX2 (C-term) Peptide	C terminus of Human SOX2	PAB3875
P0843	SOX2 (N-term) Peptide	N terminus of Human SOX2	PAB3876
P0846	THY1 (N-term) Peptide	N terminus of Human THY1	PAB3877
P1071	TPST2 (C-term) Peptide	C terminus of Human TPST2	PAB4294
P1070	TPST2 (N-term) Peptide	N terminus of Human TPST2	PAB4293
P0182	UBA2 (N-term) Peptide	N terminus of Human UBA2	PAB1761
P0894	UBE2L6 (C-term) Peptide	C terminus of Human UBE2L6	PAB3896
P0893	UBE2L6 (N-term) Peptide	N terminus of Human UBE2L6	PAB3895
P1252	UGP2 (C-term) Peptide	C terminus of Human UGP2	PAB2609
P1251	UGP2 (N-term) Peptide	N terminus of Human UGP2	PAB2608
P0927	USP7 (C-term) Peptide	C terminus of Human USP7	PAB4186
P0926	USP7 (N-term) Peptide	N terminus of Human USP7	PAB4185
P0567	VSNL1 (C-term) Peptide	C terminus of Human VSNL1	PAB3604
P1919	YBX1 (C-term) Peptide	C terminus of Human YBX1	PAB4883
P1918	YBX1 (N-term) Peptide	N terminus of Human YBX1	PAB4882

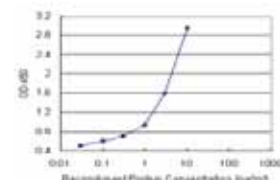
Antibody Pairs for ELISA

Cat. Num.	Product Name	Calibration Range	Application
H00010327-AP11	AKR1A1 (Human) Matched Antibody Pair	0.1 ng/ml to 100 ng/ml.	EPair-Re
H00010327-AP21	AKR1A1 (Human) Matched Antibody Pair	0.3 ng/ml to 100 ng/ml.	EPair-Re
H00000873-AP11	CBR1 (Human) Matched Antibody Pair	3 ng/ml to 100 ng/ml.	EPair-Re
H00009350-AP51	CER1 (Human) Matched Antibody Pair	729x to 3x dilution	EPair-Tr
H00009350-AP21	CER1 (Human) Matched Antibody Pair	0.3 ng/ml to 100 ng/ml.	EPair-Re
H00001382-AP61	CRABP2 (Human) Matched Antibody Pair	729x to 3x dilution	EPair-Tr
H00002288-AP21	FKBP4 (Human) Matched Antibody Pair	3 ng/ml to 100 ng/ml.	EPair-Re
H00002288-AP31	FKBP4 (Human) Matched Antibody Pair	1 ng/ml to 100 ng/ml.	EPair-Re
H00002288-AP22	FKBP4 (Human) Matched Antibody Pair	0.3 ng/ml to 100 ng/ml.	EPair-Re
H00002597-AP51	GAPDH (Human) Matched Antibody Pair	729x to 3x dilution	EPair-Tr
H00002618-AP51	GART (Human) Matched Antibody Pair	729x to 3x dilution	EPair-Tr
H00079833-AP21	GEMIN6 (Human) Matched Antibody Pair	0.1 ng/ml to 100 ng/ml.	EPair-Re
H00002960-AP22	GTF2E1 (Human) Matched Antibody Pair	3 ng/ml to 100 ng/ml.	EPair-Re
H00008079-AP11	MLF2 (Human) Matched Antibody Pair	3 ng/ml to 100 ng/ml.	EPair-Re
H00008079-AP21	MLF2 (Human) Matched Antibody Pair	3 ng/ml to 100 ng/ml.	EPair-Re
H00023107-AP21	MRPS27 (Human) Matched Antibody Pair	1 ng/ml to 100 ng/ml.	EPair-Re
H00051491-AP21	NOP16 (Human) Matched Antibody Pair	0.03 ng/ml to 100 ng/ml.	EPair-Re
H00051491-AP22	NOP16 (Human) Matched Antibody Pair	0.1 ng/ml to 100 ng/ml.	EPair-Re
H00051491-AP11	NOP16 (Human) Matched Antibody Pair	3 ng/ml to 100 ng/ml.	EPair-Re
H00051491-AP23	NOP16 (Human) Matched Antibody Pair	0.3 ng/ml to 100 ng/ml.	EPair-Re
H00004835-AP21	NQO2 (Human) Matched Antibody Pair	3 ng/ml to 100 ng/ml.	EPair-Re
H00004835-AP11	NQO2 (Human) Matched Antibody Pair	10 ng/ml to 100 ng/ml.	EPair-Re
H00004521-AP11	NUDT1 (Human) Matched Antibody Pair	3 ng/ml to 100 ng/ml.	EPair-Re
H00009060-AP51	PAPSS2 (Human) Matched Antibody Pair	81x to 3x dilution	EPair-Tr
H00055011-AP11	PIH1D1 (Human) Matched Antibody Pair	1 ng/ml to 100 ng/ml.	EPair-Re
H00055011-AP22	PIH1D1 (Human) Matched Antibody Pair	0.1 ng/ml to 100 ng/ml.	EPair-Re
H00011145-AP11	PLA2G16 (Human) Matched Antibody Pair	0.1 ng/ml to 100 ng/ml.	EPair-Re
H00010687-AP42	PNMA2 (Human) Matched Antibody Pair	0.3 ng/ml to 100 ng/ml.	EPair-Re
H00010687-AP43	PNMA2 (Human) Matched Antibody Pair	0.3 ng/ml to 100 ng/ml.	EPair-Re
H00010687-AP41	PNMA2 (Human) Matched Antibody Pair	1 ng/ml to 100 ng/ml.	EPair-Re
H00010055-AP21	SAE1 (Human) Matched Antibody Pair	0.1 ng/ml to 100 ng/ml.	EPair-Re
H00010055-AP11	SAE1 (Human) Matched Antibody Pair	0.3 ng/ml to 100 ng/ml.	EPair-Re
H00006783-AP21	SULT1E1 (Human) Matched Antibody Pair	3 ng/ml to 100 ng/ml.	EPair-Re
H00008224-AP21	SYN3 (Human) Matched Antibody Pair	3 ng/ml to 100 ng/ml.	EPair-Re
H00055775-AP11	TDP1 (Human) Matched Antibody Pair	3 ng/ml to 100 ng/ml.	EPair-Re
H00055775-AP51	TDP1 (Human) Matched Antibody Pair	729x to 3x dilution	EPair-Tr
H00007004-AP51	TEAD4 (Human) Matched Antibody Pair	243x to 3x dilution	EPair-Tr
H00051106-AP51	TFB1M (Human) Matched Antibody Pair	27x to 3x dilution	EPair-Tr
H00009246-AP21	UBE2L6 (Human) Matched Antibody Pair	0.3 ng/ml to 100 ng/ml.	EPair-Re



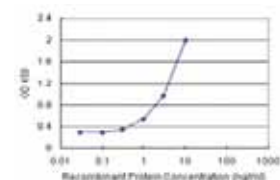
H00010327-AP11

Standard curve using recombinant protein (H00010327-P01) as an analyte. Sandwich ELISA detection sensitivity ranging from 0.1 ng/ml to 100 ng/ml.



H00051491-AP22

Standard curve using recombinant protein (H00051491-P01) as an analyte. Sandwich ELISA detection sensitivity ranging from 0.1 ng/ml to 100 ng/ml.



H00009246-AP21

Standard curve using recombinant protein (H00009246-P01) as an analyte. Sandwich ELISA detection sensitivity ranging from 0.3 ng/ml to 100 ng/ml.

Antibody Pairs for IP-WB

Cat. Num.	Product Name	IP Antibody Raised in	WB Antibody Raised in	Entrez GeneID	Official Gene Symbol
H00000873-PW1	CBR1 (Human) IP-WB Antibody Pair	Rabbit	Mouse	873	CBR1
H00001159-PW1	CKMT1B (Human) IP-WB Antibody Pair	Rabbit	Mouse	1159	CKMT1B
H00003172-PW1	HNF4A (Human) IP-WB Antibody Pair	Rabbit	Mouse	3172	HNF4A
H00004521-PW1	NUDT1 (Human) IP-WB Antibody Pair	Rabbit	Mouse	4521	NUDT1
H00009246-PW1	UBE2L6 (Human) IP-WB Antibody Pair	Rabbit	Mouse	9246	UBE2L6
H00011145-PW1	PLA2G16 (Human) IP-WB Antibody Pair	Rabbit	Mouse	11145	PLA2G16
H00051491-PW1	NOP16 (Human) IP-WB Antibody Pair	Rabbit	Mouse	51491	NOP16
H00051504-PW1	HSPC152 (Human) IP-WB Antibody Pair	Rabbit	Mouse	51504	HSPC152
H00005696-PW1	PSMB8 (Human) IP-WB Antibody Pair	Rabbit	Mouse	5696	PSMB8
H00006783-PW1	SULT1E1 (Human) IP-WB Antibody Pair	Rabbit	Mouse	6783	SULT1E1
H00009350-PW1	CER1 (Human) IP-WB Antibody Pair	Rabbit	Mouse	9350	CER1
H00011061-PW1	LECT1 (Human) IP-WB Antibody Pair	Rabbit	Mouse	11061	LECT1
H00055011-PW1	PIH1D1 (Human) IP-WB Antibody Pair	Rabbit	Mouse	55011	PIH1D1
H00002618-PW1	GART (Human) IP-WB Antibody Pair	Rabbit	Mouse	2618	GART
H00002966-PW1	GTF2H2 (Human) IP-WB Antibody Pair	Rabbit	Mouse	2966	GTF2H2
H00003291-PW1	HSD11B2 (Human) IP-WB Antibody Pair	Rabbit	Mouse	3291	HSD11B2

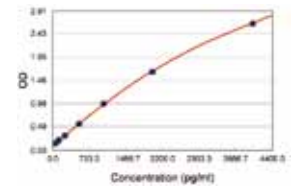
Antibody Pairs for IP-WB

Cat. Num.	Product Name	IP Antibody Raised in	WB Antibody Raised in	Entrez GeneID	Official Gene Symbol
H00002960-PW1	GTF2E1 (Human) IP-WB Antibody Pair	Rabbit	Mouse	2960	GTF2E1
H00008856-PW1	NR1I2 (Human) IP-WB Antibody Pair	Rabbit	Mouse	8856	NR1I2
H00005096-PW1	PCCB (Human) IP-WB Antibody Pair	Rabbit	Mouse	5096	PCCB
H00004885-PW1	NPTX2 (Human) IP-WB Antibody Pair	Rabbit	Mouse	4885	NPTX2
H00010284-PW1	SAP18 (Human) IP-WB Antibody Pair	Rabbit	Mouse	10284	SAP18
H00060509-PW1	AGBL5 (Human) IP-WB Antibody Pair	Rabbit	Mouse	60509	AGBL5
H00064388-PW1	GREM2 (Human) IP-WB Antibody Pair	Rabbit	Mouse	64388	GREM2
H00065993-PW1	MRPS34 (Human) IP-WB Antibody Pair	Rabbit	Mouse	65993	MRPS34
H00005354-PW1	PLP1 (Human) IP-WB Antibody Pair	Rabbit	Rabbit	5354	PLP1
H00011339-PW1	OIP5 (Human) IP-WB Antibody Pair	Rabbit	Mouse	11339	OIP5
H00023392-PW1	KIAA0368 (Human) IP-WB Antibody Pair	Rabbit	Mouse	23392	KIAA0368
H00030968-PW1	STOML2 (Human) IP-WB Antibody Pair	Rabbit	Mouse	30968	STOML2
H00054937-PW1	SOHLH2 (Human) IP-WB Antibody Pair	Rabbit	Mouse	54937	SOHLH2
H00055319-PW1	C4orf43 (Human) IP-WB Antibody Pair	Rabbit	Mouse	55319	C4orf43
H00000585-PW1	BBS4 (Human) IP-WB Antibody Pair	Rabbit	Mouse	585	BBS4
H00004674-PW1	NAP1L2 (Human) IP-WB Antibody Pair	Rabbit	Mouse	4674	NAP1L2
H00005822-PW1	PWP2 (Human) IP-WB Antibody Pair	Rabbit	Mouse	5822	PWP2
H00006905-PW1	TBCE (Human) IP-WB Antibody Pair	Rabbit	Mouse	6905	TBCE
H00023212-PW1	RRS1 (Human) IP-WB Antibody Pair	Rabbit	Mouse	23212	RRS1
H00025939-PW1	SAMHD1 (Human) IP-WB Antibody Pair	Rabbit	Mouse	25939	SAMHD1
H00051379-PW1	CRLF3 (Human) IP-WB Antibody Pair	Rabbit	Mouse	51379	CRLF3
H00079187-PW1	FSD1 (Human) IP-WB Antibody Pair	Rabbit	Mouse	79187	FSD1
H00004291-PW1	MLF1 (Human) IP-WB Antibody Pair	Rabbit	Mouse	4291	MLF1
H00009837-PW1	GINS1 (Human) IP-WB Antibody Pair	Rabbit	Mouse	9837	GINS1
H00002288-PW1	FKBP4 (Human) IP-WB Antibody Pair	Rabbit	Mouse	2288	FKBP4
H00000353-PW1	APRT (Human) IP-WB Antibody Pair	Rabbit	Mouse	353	APRT
H00002739-PW1	GLO1 (Human) IP-WB Antibody Pair	Rabbit	Rabbit	2739	GLO1
H00008623-PW1	ASMTL (Human) IP-WB Antibody Pair	Rabbit	Rabbit	8623	ASMTL
H00010131-PW1	TRAP1 (Human) IP-WB Antibody Pair	Rabbit	Rabbit	10131	TRAP1
H00010810-PW1	WASF3 (Human) IP-WB Antibody Pair	Rabbit	Mouse	10810	WASF3
H00055839-PW1	CENPN (Human) IP-WB Antibody Pair	Rabbit	Rabbit	55839	CENPN
H00055863-PW1	TMEM126B (Human) IP-WB Antibody Pair	Rabbit	Rabbit	55863	TMEM126B
H00080324-PW1	PUS1 (Human) IP-WB Antibody Pair	Rabbit	Rabbit	80324	PUS1
H00006888-PW1	TALDO1 (Human) IP-WB Antibody Pair	Rabbit	Rabbit	6888	TALDO1
H00005223-PW1	PGAM1 (Human) IP-WB Antibody Pair	Mouse	Rabbit	5223	PGAM1
H00005696-PW2	PSMB8 (Human) IP-WB Antibody Pair	Mouse	Rabbit	5696	PSMB8
H00007004-PW1	TEAD4 (Human) IP-WB Antibody Pair	Mouse	Rabbit	7004	TEAD4
H00007083-PW1	TK1 (Human) IP-WB Antibody Pair	Mouse	Rabbit	7083	TK1
H00002288-PW2	FKBP4 (Human) IP-WB Antibody Pair	Mouse	Rabbit	2288	FKBP4
H00002618-PW2	GART (Human) IP-WB Antibody Pair	Mouse	Rabbit	2618	GART
H00026227-PW1	PHGDH (Human) IP-WB Antibody Pair	Mouse	Rabbit	26227	PHGDH
H00001593-PW1	CYP27A1 (Human) IP-WB Antibody Pair	Rabbit	Mouse	1593	CYP27A1
H00002597-PW1	GAPDH (Human) IP-WB Antibody Pair	Mouse	Rabbit	2597	GAPDH
H00008224-PW1	SYN3 (Human) IP-WB Antibody Pair	Rabbit	Mouse	8224	SYN3
H00009350-PW2	CER1 (Human) IP-WB Antibody Pair	Mouse	Rabbit	9350	CER1
H00001528-PW1	CYB5A (Human) IP-WB Antibody Pair	Mouse	Rabbit	1528	CYB5A
H00001652-PW1	DDT (Human) IP-WB Antibody Pair	Mouse	Rabbit	1652	DDT
H00011339-PW2	OIP5 (Human) IP-WB Antibody Pair	Mouse	Rabbit	11339	OIP5
H00054937-PW2	SOHLH2 (Human) IP-WB Antibody Pair	Mouse	Rabbit	54937	SOHLH2
H00029902-PW1	C12orf24 (Human) IP-WB Antibody Pair	Mouse	Rabbit	29902	C12orf24
H00055011-PW2	PIH1D1 (Human) IP-WB Antibody Pair	Mouse	Rabbit	55011	PIH1D1
H00051268-PW1	PIPOX (Human) IP-WB Antibody Pair	Mouse	Rabbit	51268	PIPOX
H00080324-PW2	PUS1 (Human) IP-WB Antibody Pair	Mouse	Rabbit	80324	PUS1
H00000471-PW1	ATIC (Human) IP-WB Antibody Pair	Rabbit	Mouse	471	ATIC
H00007086-PW1	TKT (Human) IP-WB Antibody Pair	Rabbit	Mouse	7086	TKT
H00009060-PW1	PAPSS2 (Human) IP-WB Antibody Pair	Rabbit	Mouse	9060	PAPSS2
H00055775-PW1	TDP1 (Human) IP-WB Antibody Pair	Rabbit	Mouse	55775	TDP1
H00005521-PW2	PPP2R2B (Human) IP-WB Antibody Pair	Mouse	Rabbit	5521	PPP2R2B
H00005521-PW1	PPP2R2B (Human) IP-WB Antibody Pair	Mouse	Rabbit	5521	PPP2R2B
H00079187-PW2	FSD1 (Human) IP-WB Antibody Pair	Mouse	Rabbit	79187	FSD1
H00005018-PW2	OXA1L (Human) IP-WB Antibody Pair	Rabbit	Mouse	5018	OXA1L
H00000119-PW1	ADD2 (Human) IP-WB Antibody Pair	Rabbit	Mouse	119	ADD2
H00010437-PW1	IFI30 (Human) IP-WB Antibody Pair	Rabbit	Mouse	10437	IFI30

Antibody Pairs for IP-WB

ELISA Kits

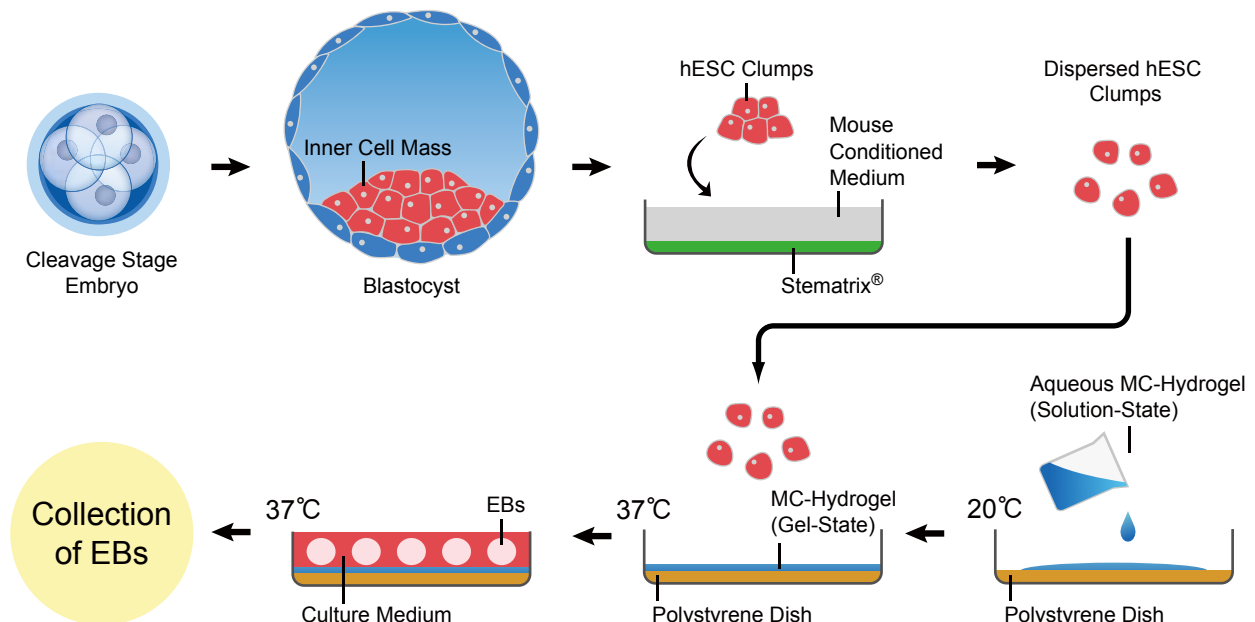
Cat. Num.	Product Name	Calibration Range	Limit of Detection
KA1391	Fabp5 (Mouse) ELISA Kit	62.5 pg/mL to 4,000 pg/mL	6.91 pg/mL
KA1247	HIF1A (Human) ELISA Kit	6.25 to 400 ng/mL	1.56 pg/mL
KA1404	HSP47 (Human) ELISA Kit	5 to 50 ng/mL	3 ng/mL
KA1240	PCX (Human) ELISA Kit	156 to 10000 pg/mL	78 pg/mL
KA1176	PPIA (Human) ELISA Kit	0.156 to 10 ng/mL	0.039 ng/mL
KA0536	PRDX1 (Human) ELISA Kit	0.5 to 32 ng/mL	0.5 ng/mL



KA1247

Stem Cell Collection

Abnova offers a collection of stem cell culture products for the study of human stem cells including MC-Hydrogel for cultivation and formation of embryoid bodies, Stematrix® for feeder-independent cell proliferation, Mouse Conditioned Media for maintenance of cell growth, and Stem Cell Keeper™ as a vitrification solution for cell preservation. These products together with Abnova's extensive collection of stem cell related antibodies are ready to accelerate your research!



Stem Cell Culture Reagents

Cat. Num.	Product Name	Product Description
U0018	MC-Hydrogel	A thermo-sensitive, methylcellulose hydrogel for creating a low attachment surface for embryoid body or cell aggregate formation.
U0019	Stematrix®	A human matrix derived from normal human fibroblast for feeder-independent human embryonic stem cell (hESC), induced pluripotent stem cell (iPSC), and human mesenchymal cell (hMSC) culture from bone marrow and cord blood.
U0020	Mouse Conditioned Media	A mouse conditioned media (1x) for human embryonic stem cell (hESC) and induced pluripotent stem cell (iPSC) culture.
U0021	StemCell Keep™	A vitrification solution for human embryonic stem cell (hESC) and induced pluripotent stem cell (iPSC).

