



Matched Pair Frozen and Paraffin Tissue Sections

Matched Pair Frozen and Paraffin Tissue Sections have been generated from human tumors and the corresponding normal tissues of the same donor. BioChain offers Primary Pair (PP), as well as Primary and Metastatic Pair (PM) products. Primary Pair tissue specimens are those that have been sectioned from primary tumors and its adjacent unaffected normal tissue. Primary Metastatic Pair tissue specimens have been sectioned from primary tumors and corresponding metastatic tumors.

Each tissue section is produced using proprietary sample preparation technology from the finest quality of tissue specimens. Tissues are sectioned at 5 μ m thickness and are carefully mounted on positively charged glass slides. Afterwards, each lot is ensured for high-quality using H&E staining. This product is a useful tool for accelerating gene expression analysis by identifying tumor-specific genes and tumor metastatic genes. Patient demographic and disease related history is available.

Key Benefits & Features

- Tumor/adjacent normal or primary/metastatic tumor on the same slide
- Identification of tumor specific genes and proteins
- Extensive quality control procedures to ensure high quality

Applications

- Cellular localization of tissue specific mRNA and protein expression
- Comparison of the locations of novel genes in different tissues
- Suitable for both immunohistochemistry, in situ hybridization, and in situ PCR detection

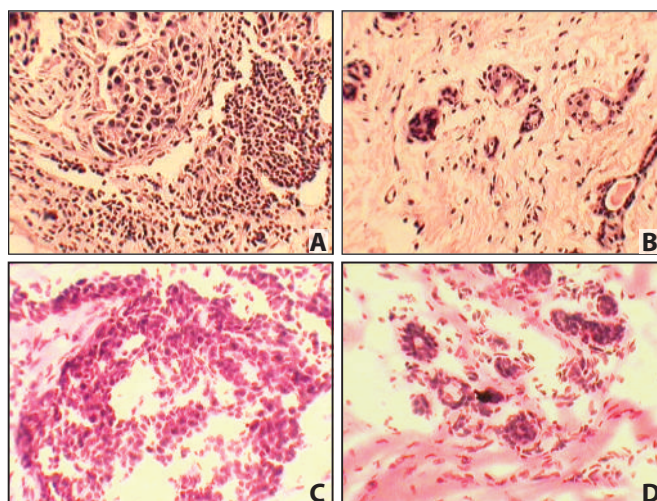


Figure 11. HE Staining of Tumor Matched Pair Tissue Sections.

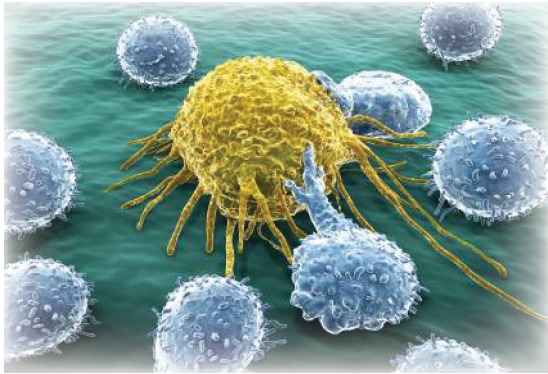
Panel A. Paraffin Embedded Breast Tumor Tissue
Panel B. Paraffin Embedded Breast Tumor Adjacent Normal Tissue

Panel C. Frozen Breast Tumor Tissue
Panel D. Frozen Breast Tumor Adjacent Normal Tissue



Selection of Matched Pair - Frozen Tissue Sections

Catalog No.	Product	Unit
T6235086-PM	Matched Pair - Frozen Tissue - Human Primary and Matched Metastatic Tumor: Breast	5 slides x2
T6235090-PM	Matched Pair - Frozen Tissue - Human Primary and Matched Metastatic Tumor: Colon	5 slides x2
T6235152-PM	Matched Pair - Frozen Tissue - Human Primary and Matched Metastatic Tumor: Lung	5 slides x2
T6235149-PM	Matched Pair - Frozen Tissue - Human Primary and Matched Metastatic Tumor: Liver	5 slides x2
T6235086-PP	Matched Pair - Frozen Tissue - Human Primary Tumor and Normal: Breast	5 slides x2
T6235090-PP	Matched Pair - Frozen Tissue - Human Primary Tumor and Normal: Colon	5 slides x2
T6235152-PP	Matched Pair - Frozen Tissue - Human Primary Tumor and Normal: Lung	5 slides x2
T6235248-PP	Matched Pair - Frozen Tissue - Human Primary Tumor and Normal: Stomach	5 slides x2



Selection of Matched Pair - Paraffin Tissue Sections

Catalog No.	Product	Unit
T8235086-PM	Matched Pair - Paraffin Tissue - Human Primary and Matched Metastatic Tumor: Breast	5 slides x2
T8235090-PM	Matched Pair - Paraffin Tissue - Human Primary and Matched Metastatic Tumor: Colon	5 slides x2
T8235142-PM	Matched Pair - Paraffin Tissue - Human Primary and Matched Metastatic Tumor:	5 slides x2
T8235149-PM	Matched Pair - Paraffin Tissue - Human Primary and Matched Metastatic Tumor: Liver	5 slides x2
T8235090-PP	Matched Pair - Paraffin Tissue - Human Primary Tumor and Normal: Colon	5 slides x2
T8235086-PP	Matched Pair - Paraffin Tissue - Human Primary Tumor and Normal: Breast	5 slides x2
T8235152-PP	Matched Pair - Paraffin Tissue - Human Primary Tumor and Normal: Lung	5 slides x2
T8235248-PP	Matched Pair - Paraffin Tissue - Human Primary Tumor and Normal: Stomach	5 slides x2

Please visit our website: biochain.com for a complete listing of our Tissue Sections



**OTC AND SELF TESTING
 ALLERGOLOGY
 LAB PRODUCTS
 PROFESSIONAL DEVICES
 VETERINARY
 MEDICAL SUPPLIES
 SCIENTIFIC PRODUCTS**

D.B.A. ITALIA S.R.L. - via Umbria, 10 Segrate (MI)
Tel. +39 0226922300 - Fax +39 0226926058 +39 0226923535
<http://www.dbaitalia.it> - info@dbaitalia.it