

Vector Veterinary Reagents

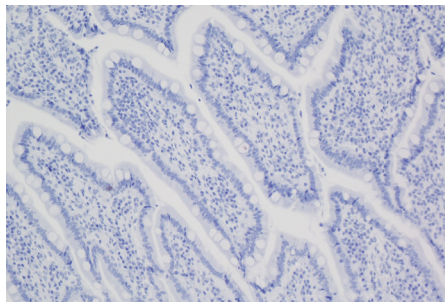
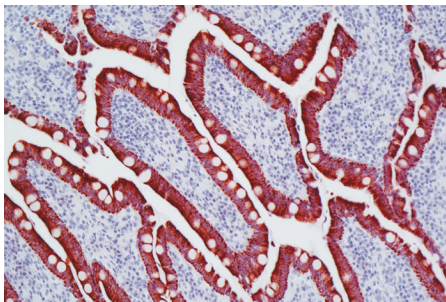
ImmPRESS™ VR Polymer Detection Kits

for farm, pet and lab animal tissues

The ImmPRESS™ Polymer Detection System is a one-step, enzymatic detection kit. The ImmPRESS™ Polymer Reagent consists of unique micropolymers of highly active peroxidase enzyme attached to a highly cross-adsorbed, affinity purified, secondary antibody. The ImmPRESS™ Reagents produce outstanding immunohistochemistry and immunocytochemistry results due to increased target accessibility, binding specificity, and signal intensity along with low background staining.

Our popular ImmPRESS™ Reagents are now available additionally cross-adsorbed to ensure minimal cross-reactivity against endogenous tissue elements in animal species commonly used for diagnostics and research-based animal model systems. Use of ImmPRESS™ VR Polymer Detection Reagents eliminates off-target binding and thus increases signal specificity in these animal tissues: **bovine, goat, sheep, swine, horse, cat, dog, rabbit, rat, mouse.**

- High sensitivity
- Low background
- Micropolymer technology
- Enhanced accessibility to nuclear and membrane antigens
- One-step detection
- Ready-to-use, prediluted in a convenient dropper bottle
- Shorter assay time
- Non-biotin
- Simplified multiple labeling



Left: Dog intestine stained with mouse antibody against multi-cytokeratin and detected with ImmPRESS™ VR HRP Anti-Mouse IgG and Vector® NovaRed™ Substrate. Counterstained with Vector® Hematoxylin QS.
Right: No mouse primary antibody negative control section displaying no background.

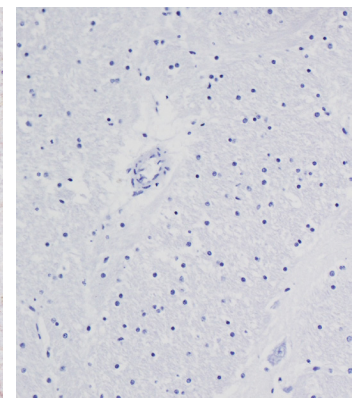
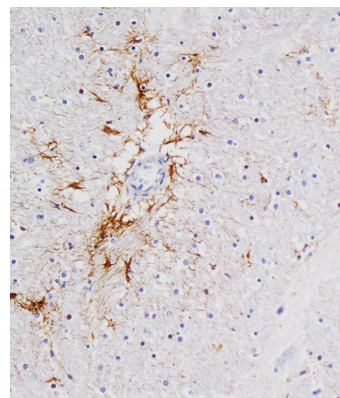
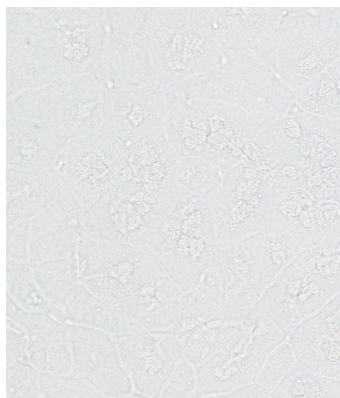
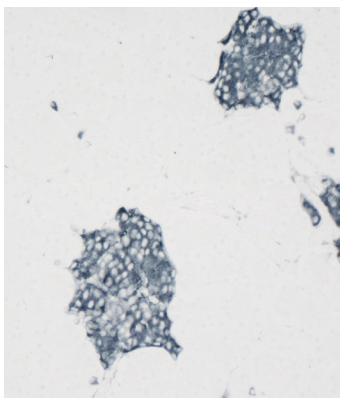
Product	Cat. Number
ImmPRESS™ VR HRP Polymer Anti-Rabbit IgG	MP-6401
ImmPRESS™ VR HRP Polymer Anti-Mouse IgG	MP-6402
ImmPRESS™ HRP Polymer Anti-Mouse IgG, Rat Adsorbed	MP-7422
ImmPRESS™ HRP Polymer Anti-Rat IgG, Mouse Adsorbed	MP-7444

For use on these tissues:



ImmPRESS™ Polymer Detection Kits Available:

Enzyme	Product	Catalog Number	Unit Size	ImmPRESS™ Reagent	Normal Blocking Serum	Approximate Number of Sections Stained
Peroxidase	ImmPRESS™ VR Anti-Rabbit IgG Kit (made in horse)	MP-6401	15 ml	15 ml ready-to-use solution	15 ml 2.5% normal horse serum	75-150
	ImmPRESS™ VR Anti-Mouse IgG Kit (made in horse)	MP-6402	15 ml	15 ml ready-to-use solution	15 ml 2.5% normal horse serum	75-150
	ImmPRESS™ Anti-Rabbit IgG Kit (made in horse)	MP-7401	15 ml	15 ml ready-to-use solution	15 ml 2.5% normal horse serum	75-150
			50 ml	50 ml ready-to-use solution	50 ml 2.5% normal horse serum	250-500
	ImmPRESS™ Anti-Mouse IgG Kit (made in horse)	MP-7402	15 ml	15 ml ready-to-use solution	15 ml 2.5% normal horse serum	75-150
			50 ml	50 ml ready-to-use solution	50 ml 2.5% normal horse serum	250-500
	ImmPRESS™ Anti-Mouse IgG, Rat Adsorbed, Kit (made in horse)	MP-7422	15 ml	15 ml ready-to-use solution	15 ml 2.5% normal horse serum	75-150
	ImmPRESS™ Anti-Rat IgG Kit (made in goat)	MP-7404	50 ml	50 ml ready-to-use solution	50 ml 2.5% normal goat serum	250-500
	ImmPRESS™ Anti-Rat IgG, Mouse Adsorbed, Kit (made in goat)	MP-7444	15 ml	15 ml ready-to-use solution	15 ml 2.5% normal goat serum	75-150
	ImmPRESS™ Anti-Goat IgG Kit (made in horse)	MP-7405	50 ml	50 ml ready-to-use solution	50 ml 2.5% normal horse serum	250-500
	ImmPRESS™ Anti-Rabbit IgG Kit (made in goat)	MP-7451	15 ml	15 ml ready-to-use solution	15 ml 2.5% normal goat serum	75-150
			50 ml	50 ml ready-to-use solution	50 ml 2.5% normal goat serum	250-500
	ImmPRESS™ Anti-Mouse IgG Kit (made in goat)	MP-7452	15 ml	15 ml ready-to-use solution	15 ml 2.5% normal goat serum	75-150
			50 ml	50 ml ready-to-use solution	50 ml 2.5% normal goat serum	250-500
ImmPRESS™ Universal Antibody Kit, Anti-Rabbit/Mouse IgG	MP-7500	15 ml	15 ml ready-to-use solution	15 ml 2.5% normal horse serum	75-150	
		50 ml	50 ml ready-to-use solution	50 ml 2.5% normal horse serum	250-500	
Amplified Peroxidase	ImmPRESS™ Excel Anti-Rabbit IgG Staining Kit	MP-7601	1 Kit	15 ml ready-to-use solution	15 ml 2.5% normal horse serum	75-150
	ImmPRESS™ Excel Anti-Mouse IgG Staining Kit	MP-7602	1 Kit	15 ml ready-to-use solution	15 ml 2.5% normal horse serum	75-150
Alkaline Phosphatase	ImmPRESS™ -AP Anti-Rabbit IgG Kit (made in horse)	MP-5401	15ml	15 ml ready-to-use solution	15 ml 2.5% normal horse serum	75-150
			50 ml	50 ml ready-to-use solution	50 ml 2.5% normal horse serum	250-500
	ImmPRESS™ -AP Anti-Mouse IgG Kit (made in horse)	MP-5402	15ml	15 ml ready-to-use solution	15 ml 2.5% normal horse serum	75-150
			50 ml	50 ml ready-to-use solution	50 ml 2.5% normal horse serum	250-500



Left: Dog pancreas stained with rabbit monoclonal antibody against synaptophysin and detected with ImmPRESS™ VR HRP Anti-Rabbit IgG and Vector® SG Substrate. Right: No rabbit primary antibody negative control section displaying no background.

Left: Cat brain stained with mouse antibody against GFAP and detected with ImmPRESS™ VR HRP Anti-Mouse IgG and ImmPACT™ DAB Substrate. Counterstained with Vector® Hematoxylin QS. Right: No mouse primary antibody negative control section displaying no background.