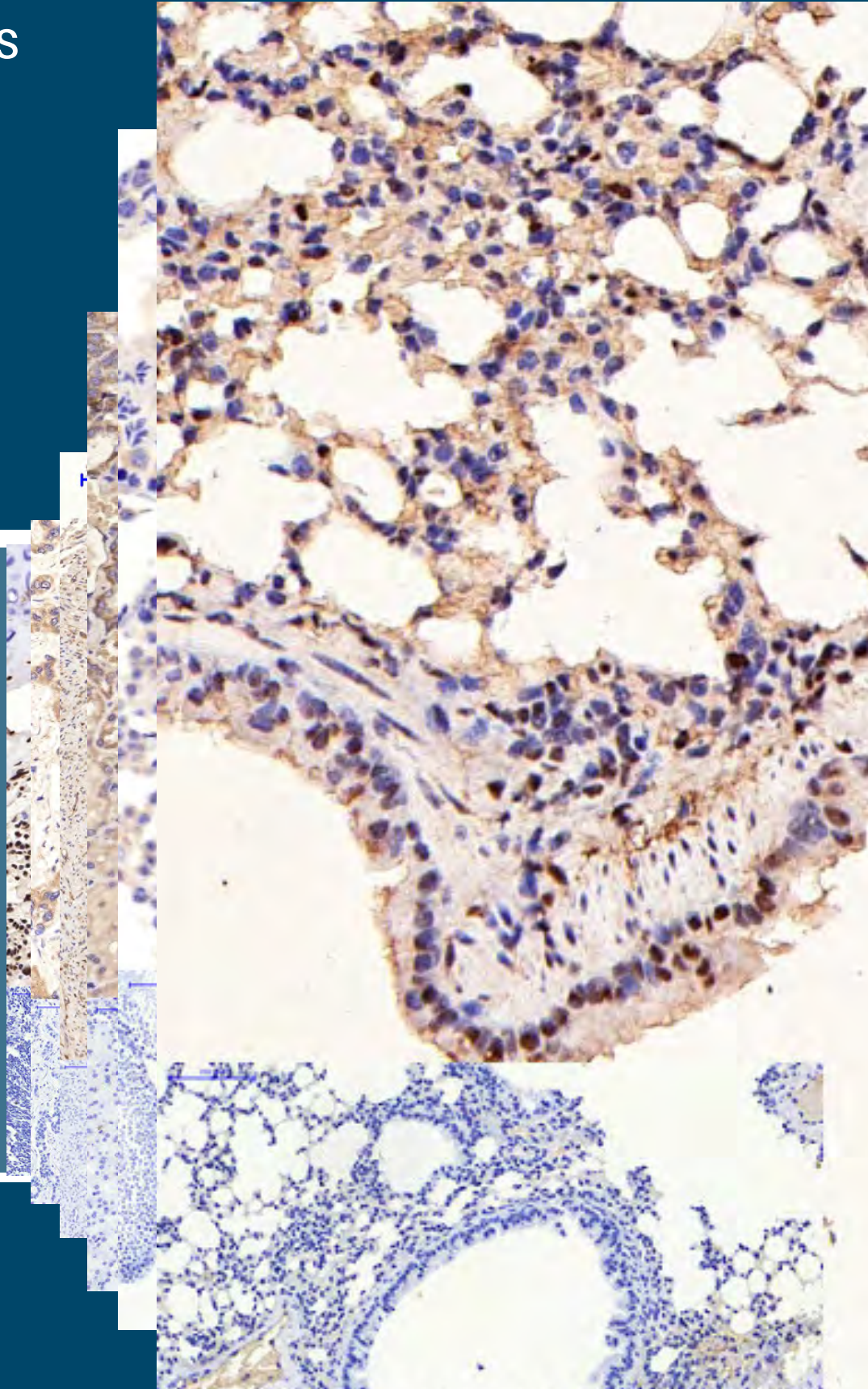




St John's Laboratory

IHC antibodies



Index



Polyclonal Antibodies

Anti-Cleaved-Caspase-1 (D210) antibody
Anti-Cleaved-Caspase-3 p17 (D175) antibody
Anti-Phospho-Akt (S473) antibody
Anti-Phospho-Catenin- β (S37) antibody
Anti-Phospho-ERK 1/2 (T202) antibody
Anti-Phospho-JNK1/2/3 (T183) antibody
Anti-Phospho-JNK1/2/3 (T183/Y185) antibody
Anti-Phospho-NF κ B-p65 (S536) antibody
Anti-Phospho-p38 (T180/Y182) antibody
Anti-Phospho-ERK 1/2 (Y222/205) antibody
Anti-Phospho-ERK 1/2 (T202/Y204) antibody
Anti-Actin β antibody
Anti-Akt1 antibody
Anti-Akt antibody
Anti-Jagged1 antibody

Monoclonal Antibodies

Anti- β -actin antibody
Anti-GAPDH antibody
Anti- β -Tubulin antibody
Anti-PCNA antibody
Anti-Lamin B1 antibody
Anti- β I tubulin antibody
Anti-Histone H3 antibody
Anti-GFAP antibody
Anti-CD4 antibody
Anti-Caspase 9 antibody
Anti-Collagen III antibody
Anti-Caspase-8 antibody
Anti-LC3A antibody
Anti-CHOP antibody
Anti-phospho-MLKL (S358) antibody

St John's Laboratory set out to instil change in the landscape of the research antibody industry. Our establishment of the world's first Antibody Validation Forum helped lay the foundation of our long term aims and service to you - the supply of validated and affordable antibodies, with a commitment to continuously improve product transparency and the availability of performance data.

This catalog comprises a selection of St John's Laboratory antibodies validated through immunohistochemistry (IHC) for a number of different tissues.

Each antibody here has been rigorously tested to show both the negative control tissue versus the antibody stained tissue.

Our commitment extends beyond the images provided, as we guarantee the performance of these products in the applications tested, and invite you to take part in our [Antibody Validation Project](#). For more details please visit our website www.stjohnslabs.com

Anti-Cleaved-Caspase-1 (D210) antibody



STJ90001

CASP1

130-210aa

IgG

Affinity-purified from rabbit antiserum by affinity-chromatography
Detects endogenous activated Caspase-1
protein fragment resulting from cleavage adjacent to D210.

Model

Gene

Immunogen Region

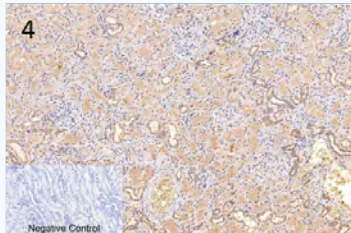
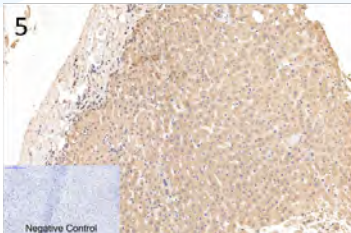
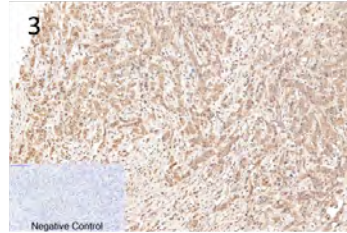
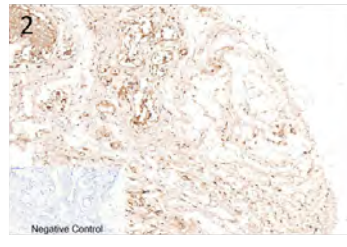
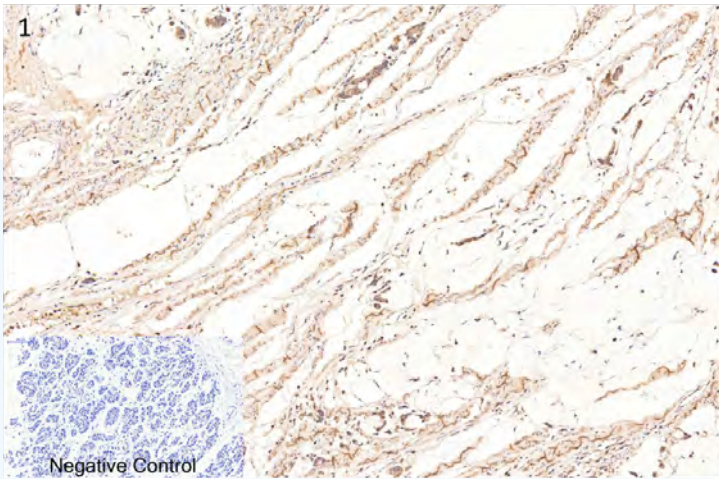
Isotype

Purification

Specificity

Other Applications

- Western Blot
- ELISA



1. Stomach cancer
2. Breast
3. Breast cancer
4. Kidney
5. Liver



Rabbit Polyclonal Anti-Human, Mouse & Rat

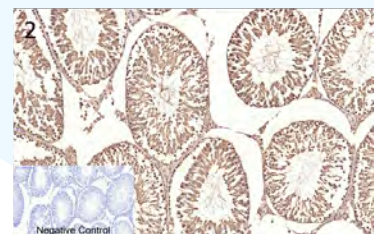
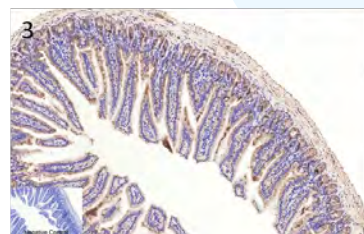
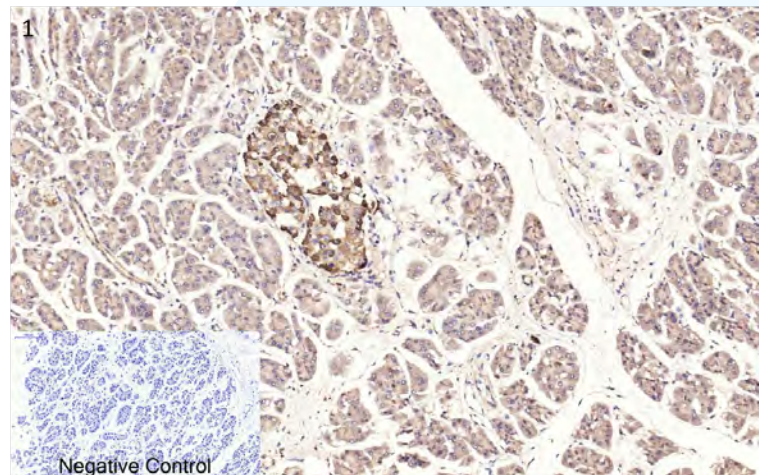
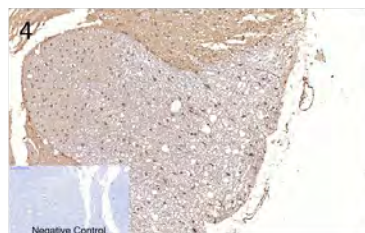
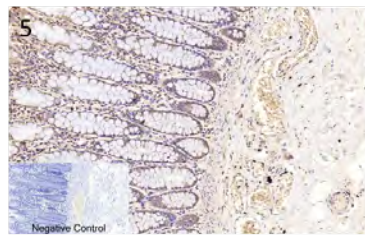
Anti-Cleaved-Caspase-3 p17 (D175) antibody



Model	STJ90005
Gene	CASP3
Immunogen Region	100-180aa
Isotype	IgG
Purification	Affinity-purified from rabbit antiserum by affinity-chromatography
Specificity	Detects endogenous levels of activated Caspase-3 p17 protein fragment resulting from cleavage adjacent to D175.

Other Applications

- Western Blot
- ELISA



1. Human stomach
2. Rat testis
3. Mouse colon
4. Rat spinal cord
5. Human colon



Rabbit Polyclonal Anti-Human, Mouse & Rat

Anti-Phospho-Akt (S473) antibody



STJ90166

AKT1

410-490aa

IgG

Affinity-purified from rabbit antiserum by affinity-chromatography

Detects endogenous levels of Akt protein when phosphorylated at S473.

Model

Gene

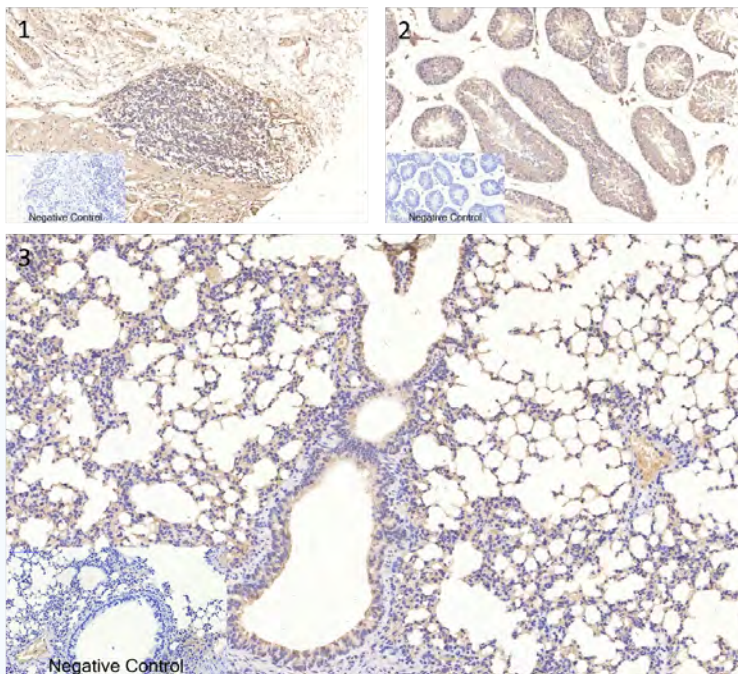
Immunogen Region

Isotype

Purification

Specificity

1. Human stomach
2. Mouse testis
3. Mouse lung
4. Human colon
5. Human lung cancer



Other Applications

- Western Blot
- ELISA



Rabbit Polyclonal Anti-Human

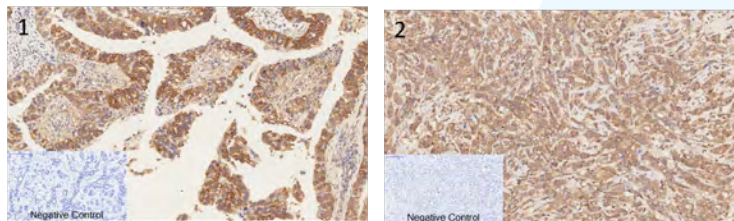
Anti-Phospho-Catenin- β (S37) antibody



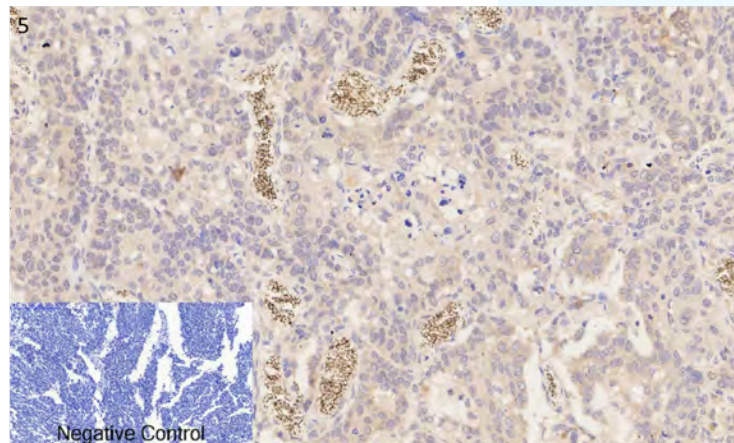
Model	STJ90207
Gene	CTNNB1
Immunogen Region	10-90aa
Isotype	IgG
Purification	Affinity-purified from rabbit antiserum by affinity-chromatography.
Specificity	Detects endogenous levels of Catenin- β when phosphorylated at S37.

Other Applications

- Western Blot
- Immunofluorescence
- ELISA



1. Liver cancer
2. Breast Cancer
3. Liver
4. Kidney
5. Lung



Rabbit Polyclonal Anti-Human, Mouse & Rat

Anti-Phospho-ERK 1/2 (T202) antibody



STJ90260

MAPK3

140-220aa

IgG

Affinity-purified from rabbit antiserum by affinity-chromatography

Detects endogenous levels of ERK 1/2 when phosphorylated at T202.

Model

Gene

Immunogen Region

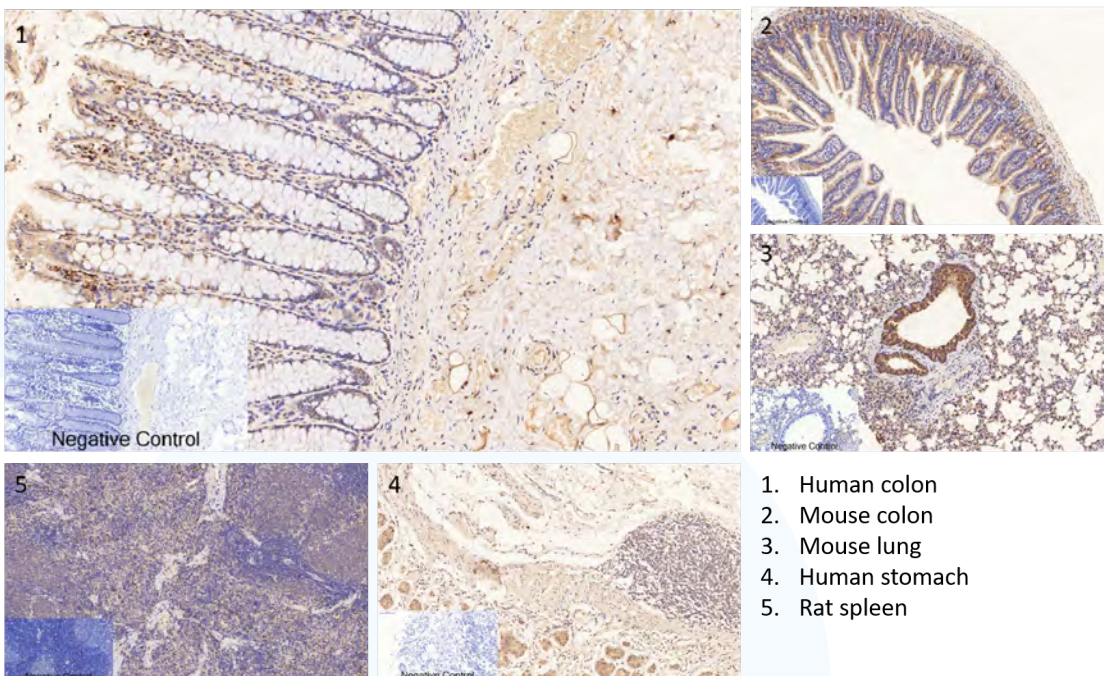
Isotype

Purification

Specificity

Other Applications

- Western Blot
- ELISA



Rabbit Polyclonal Anti-Human, Mouse & Rat

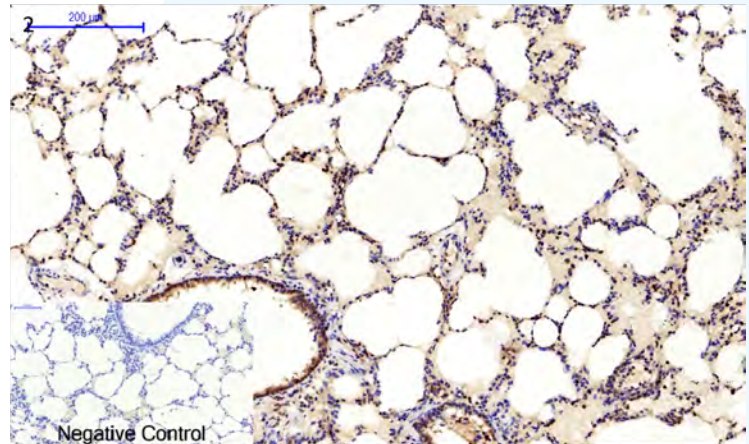
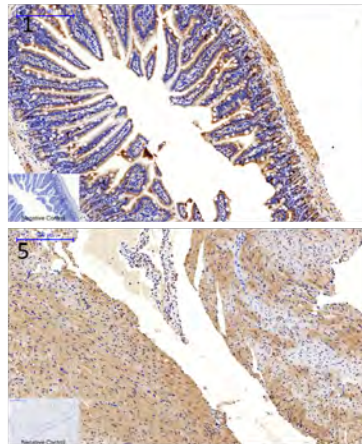
Anti-Phospho-JNK1/2/3 (T183) antibody



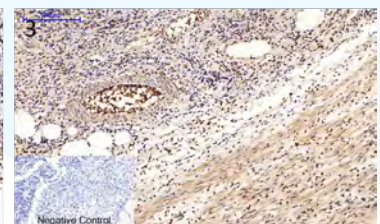
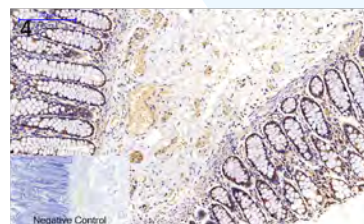
Model	STJ90316
Gene	MAPK8
Immunogen Region	120-200aa
Isotype	IgG
Purification	Affinity-purified from rabbit antiserum by affinity-chromatography
Specificity	Detects endogenous levels of JNK1/2/3 when phosphorylated at T183.

Other Applications

- Western Blot
- Immunofluorescence
- ELISA



1. Mouse colon
2. Rat lung
3. Human appendix
4. Human colon
5. Mouse heart



Rabbit Polyclonal Anti-Human, Mouse & Rat

Anti-Phospho-JNK1/2/3 (T183/Y185) antibody



STJ90317

MAPK8

120-200aa

IgG

Affinity-purified from rabbit antiserum by affinity-chromatography
Detects endogenous levels of JNK1/2/3 when phosphorylated at
T183/Y185.

Model

Gene

Immunogen Region

Isotype

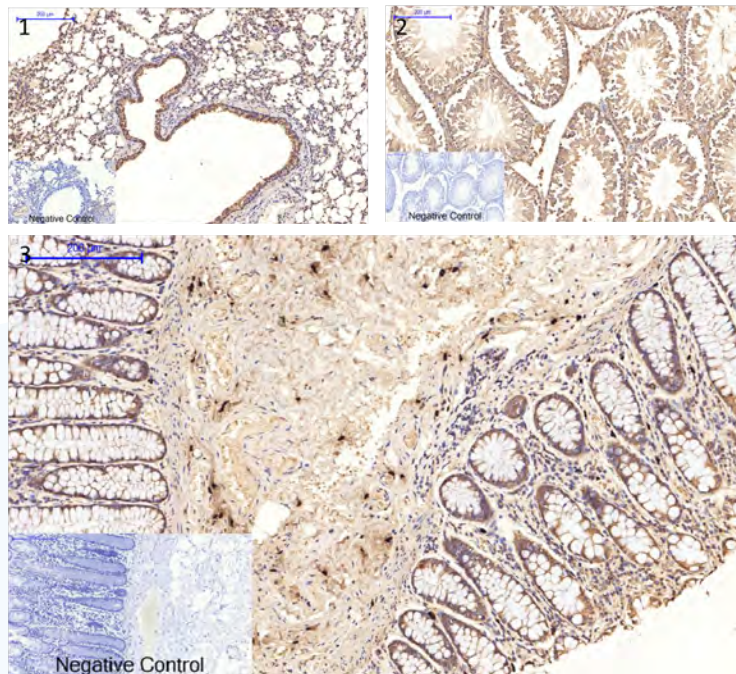
Purification

Specificity

Other Applications

- Western Blot
- ELISA

1. Mouse lung
2. Rat testis
3. Human colon
4. Mouse colon
5. Human lung cancer



Rabbit Polyclonal Anti-Human, Mouse & Rat

Anti-Phospho-NFκB-p65 (S536) antibody



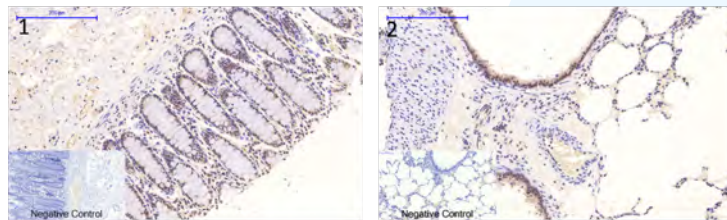
Model	STJ90351
Gene	RELA
Immunogen Region	470-550aa
Isotype	IgG
Purification	Affinity-purified from rabbit antiserum by affinity-chromatography
Specificity	Detects endogenous levels of NFκB-p65 when phosphorylated at S536.

Other Applications

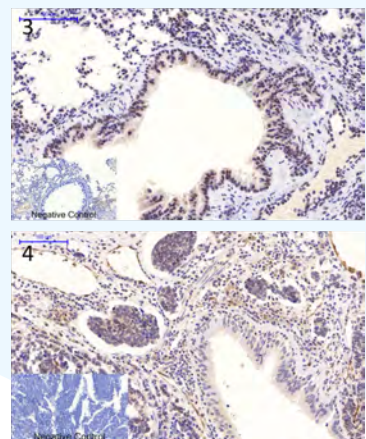
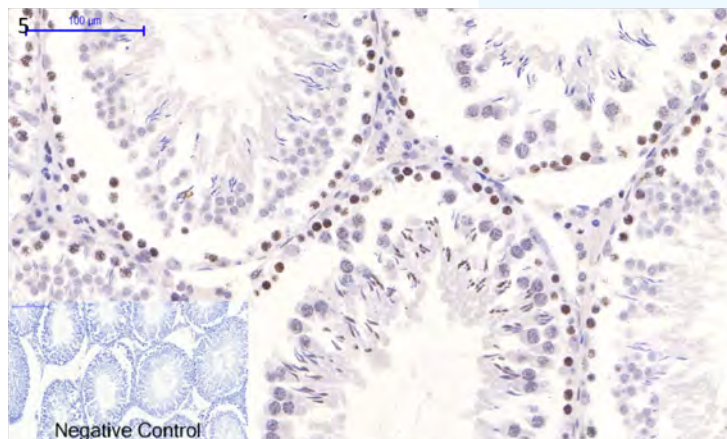
- Western Blot
- Immunoprecipitation
- ELISA

Other Reactivity

- Monkey



1. Human colon
2. Rat lung
3. Mouse lung
4. Human lung cancer
5. Rat testis



Rabbit Polyclonal Anti-Human, Mouse & Rat

Anti-Phospho-p38 (T180/Y182) antibody



STJ90498

MAPK14

120-200aa

IgG

Affinity-purified from rabbit antiserum by affinity-chromatography

Detects endogenous levels of p38 when phosphorylated at T180/Y182.

Model

Gene

Immunogen Region

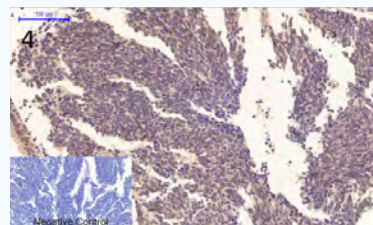
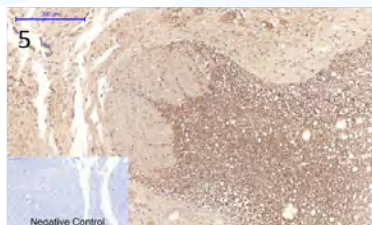
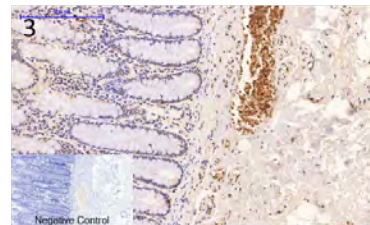
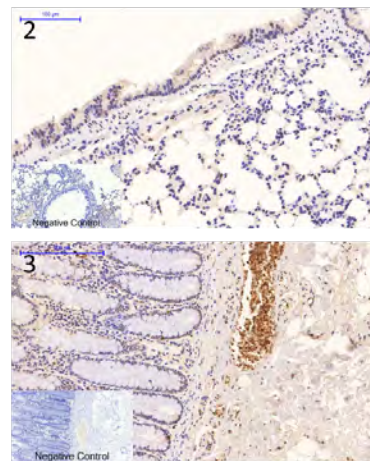
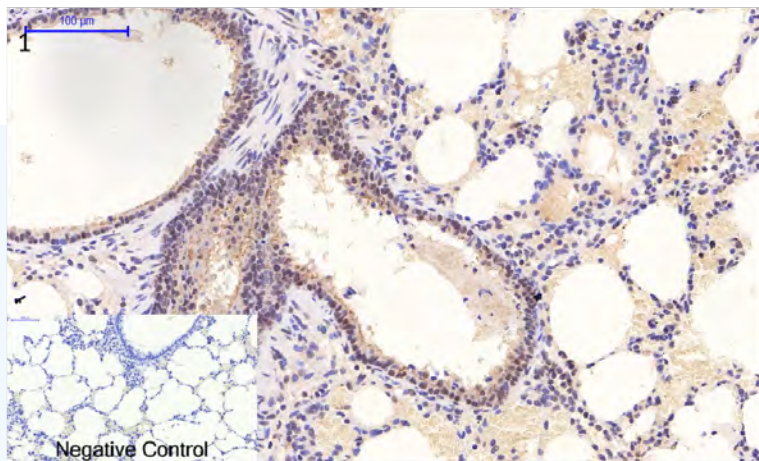
Isotype

Purification

Specificity

Other Applications

- Western Blot
- ELISA



1. Rat lung
2. Mouse lung
3. Human colon
4. Human lung cancer
5. Rat spinal cord



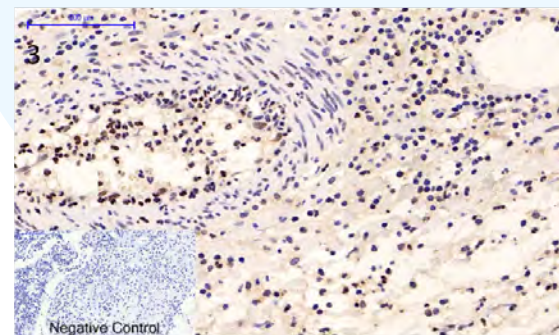
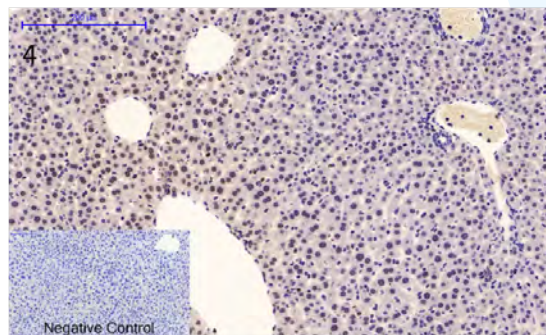
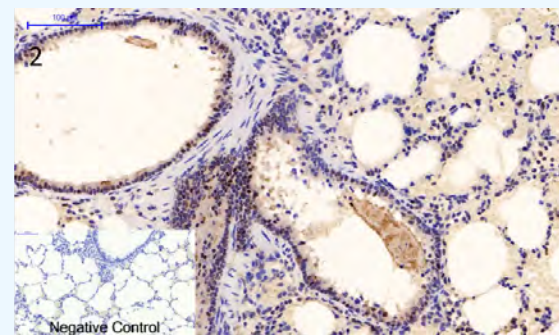
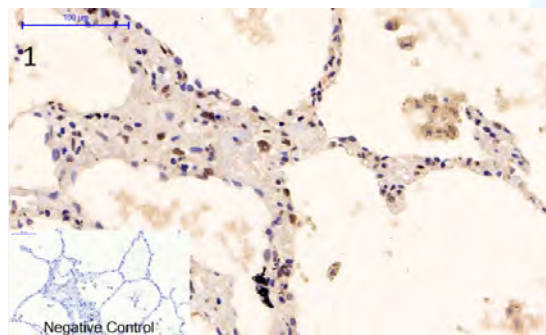
Anti-Phospho-ERK 1/2 (Y222/205) antibody



Model	STJ90657
Gene	MAPK1
Immunogen Region	140-220aa
Isotype	IgG
Purification	Affinity-purified from rabbit antiserum by affinity-chromatography
Specificity	Detects endogenous levels of ERK 1/2 when phosphorylated at Y222/205.

Other Applications

- Western Blot
- ELISA



1. Human lung
2. Rat lung

3. Human appendix
4. Mouse liver



Anti-Phospho-ERK 1/2 (T202/Y204) antibody



STJ91357

MAPK3

140-220aa

IgG

Affinity-purified from rabbit antiserum by affinity-chromatography
Detects endogenous levels of ERK 1/2 when phosphorylated at T202 or Y204.

Model

Gene

Immunogen Region

Isotype

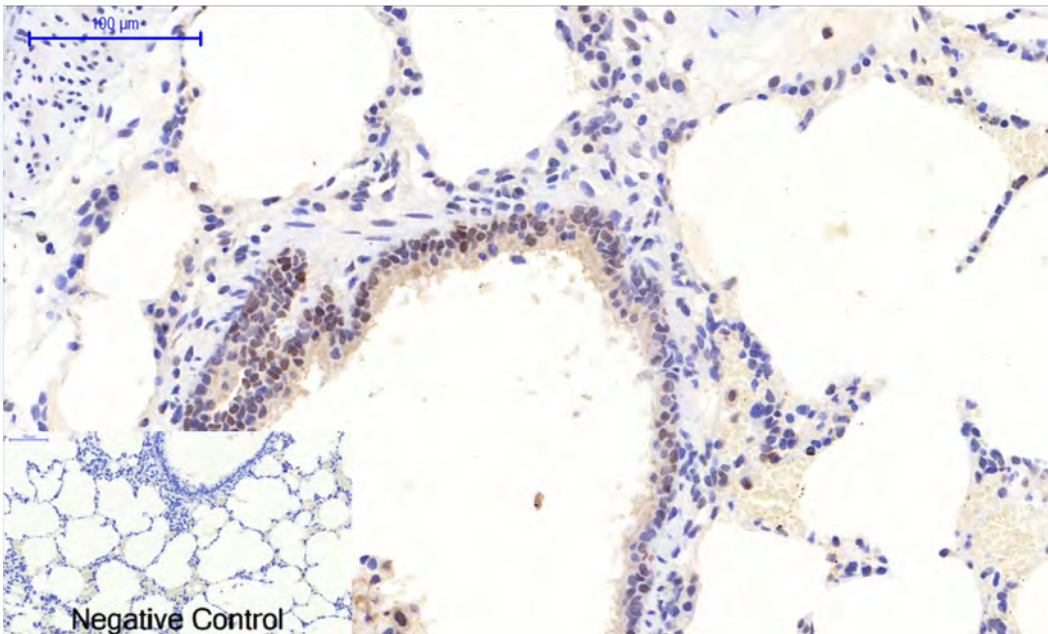
Purification

Specificity

Other Applications

- Western Blot
- ELISA

Rat lung



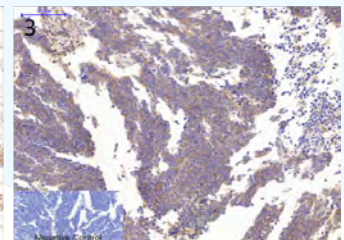
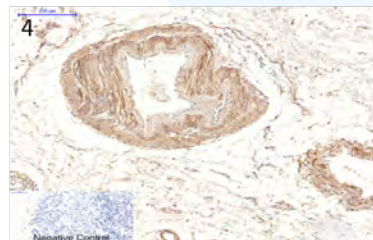
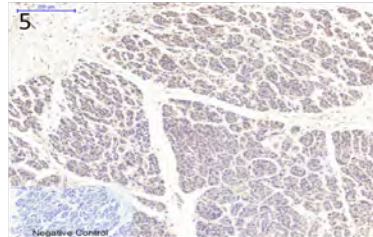
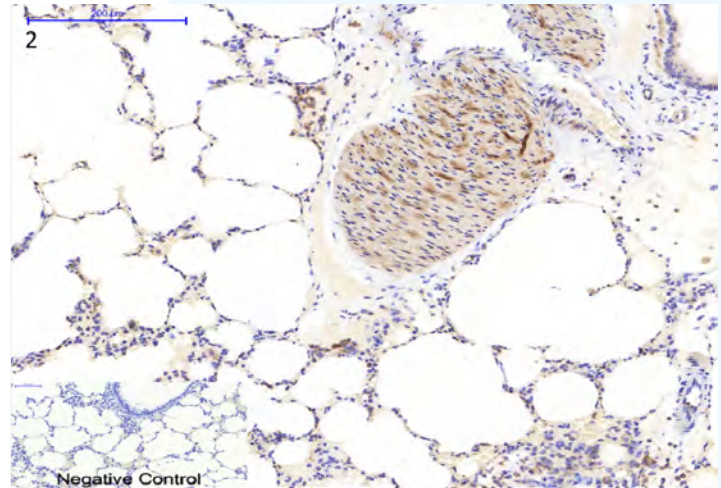
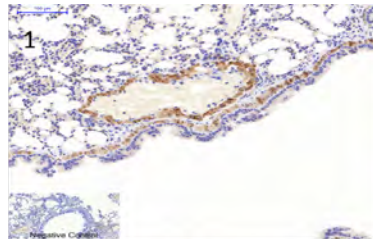
Anti-Actin β antibody



Model	STJ91464
Gene	ACTB
Immunogen	Synthesized peptide derived from the N-terminal region of human Actin β
Isotype	IgG
Purification	Affinity-purified from rabbit antiserum by affinity-chromatography
Specificity	Detects endogenous levels of Actin β protein.

Other Applications

- Western Blot
- ELISA



1. Mouse lung
2. Rat lung
3. Human lung cancer
4. Human stomach
5. Human stomach cancer



Rabbit Polyclonal Anti-Human

Anti-Akt1 antibody



STJ91542

AKT1

70-150aa

IgG

Affinity-purified from rabbit antiserum by affinity-chromatography
Detects endogenous levels of Akt1

Model

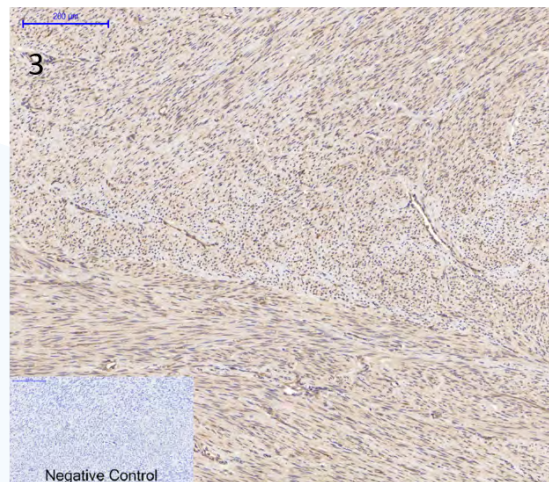
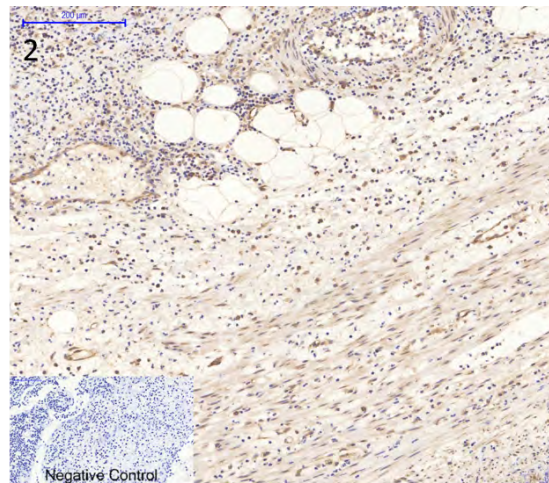
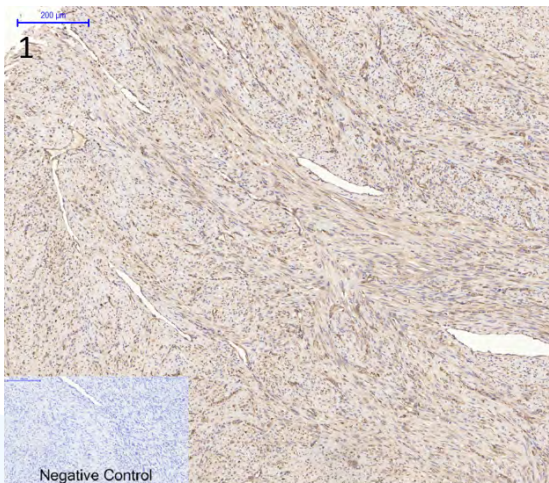
Gene

Immunogen Region

Isotype

Purification

Specificity



1. Uterine cancer
2. Appendix
3. Uterus

Other Applications

- Western Blot
- Immunofluorescence
- ELISA



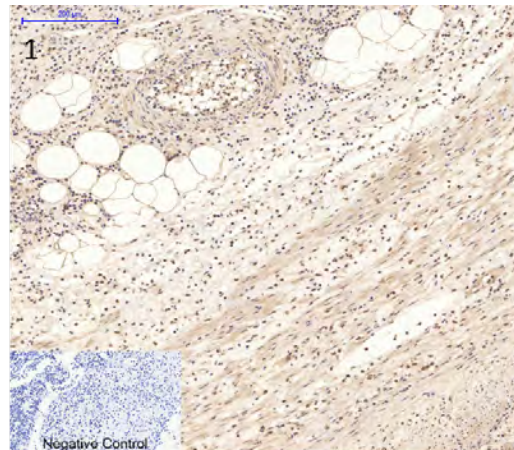
Anti-Akt antibody



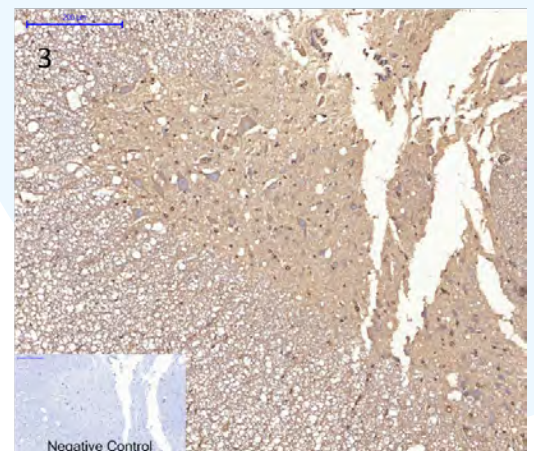
Model	STJ91550
Gene	AKT1
Immunogen Region	250-330aa
Isotype	IgG
Purification	Affinity-purified from rabbit antiserum by affinity-chromatography
Specificity	Detects endogenous levels of Akt

Other Applications

- Western Blot
- ELISA



1. Human appendix
2. Rat spinal cord
3. Human uterine cancer



Anti-Jagged1 antibody



STJ96766

JAG1

981-1030aa

IgG

Affinity-purified from rabbit antiserum by affinity-chromatography

Detects endogenous levels of Jagged1

Model

Gene

Immunogen Region

Isotype

Purification

Specificity

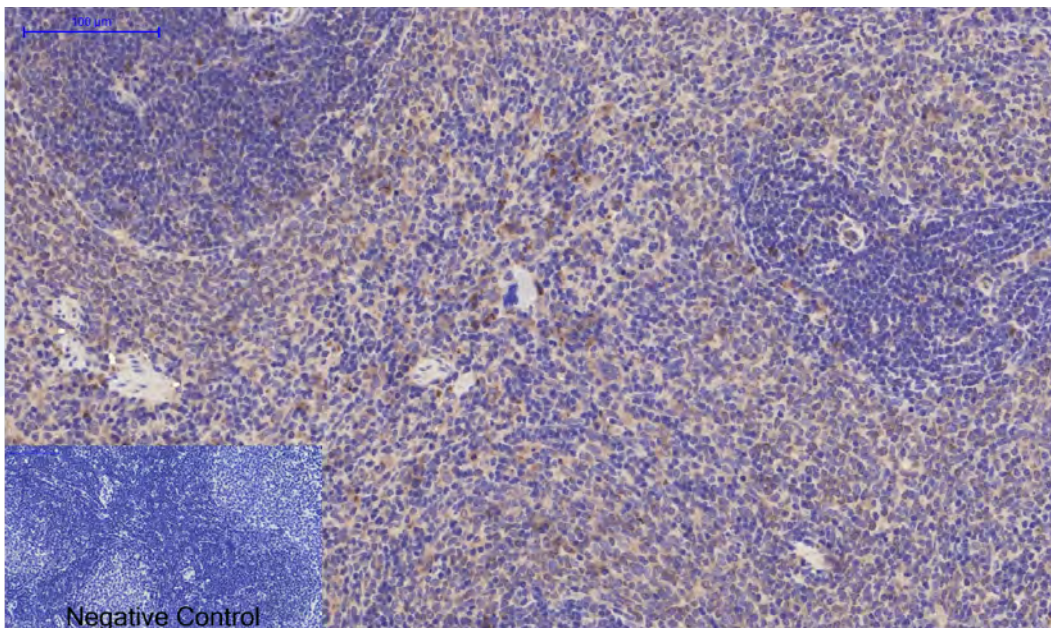
Other Applications

- Western Blot
- ELISA

Other Reactivity

- Human
- Mouse

Rat Spleen



Anti- β -actin antibody



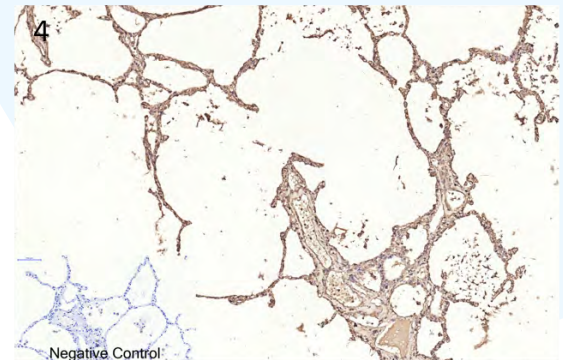
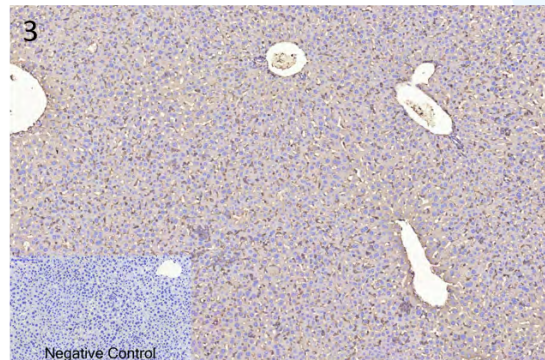
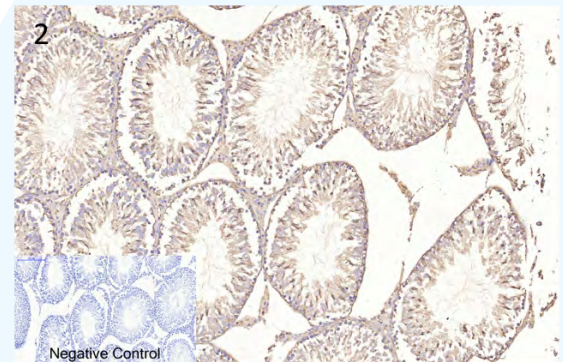
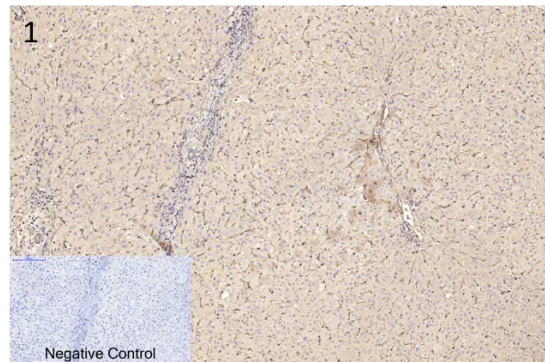
Model	STJ96930
Gene	ACTB
Clone ID	5B7
Immunogen	Synthetic Peptide
Isotype	IgG1
Purification	Affinity-purified from mouse ascites by affinity-chromatography
Specificity	Detects endogenous β -actin protein.

Other Applications

- Western Blot
- Immunocytochemistry

Other Reactivity

- Monkey
- Dog
- Chicken
- Hamster
- Rabbit
- Insect



1. Human liver
2. Rat testis

3. Mouse liver
4. Human lung



Anti-GAPDH antibody



STJ96931

GAPDH

2B8

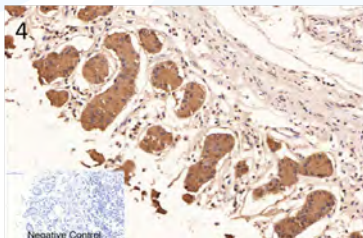
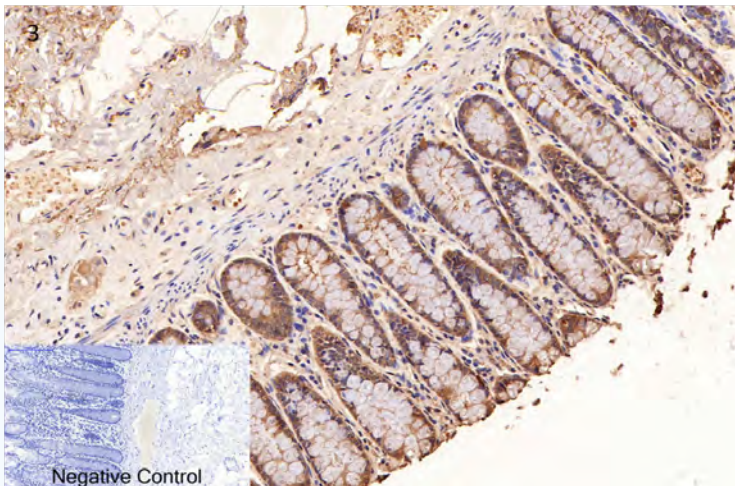
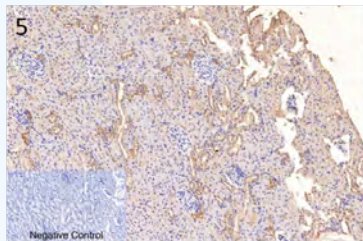
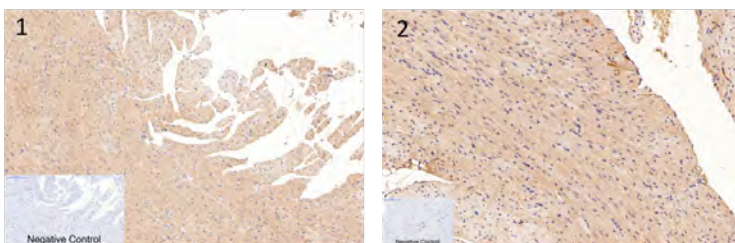
Synthetic Peptide

IgG1

Affinity-purified from mouse ascites by affinity-chromatography
The antibody detects endogenous GAPDH protein.

Model
Gene
Clone ID
Immunogen
Isotype
Purification
Specificity

1. Rat heart
2. Mouse heart
3. Heart colon
4. Heart stomach
5. Rat kidney



Other Applications

- Western Blot

Other Reactivity

- Monkey
- Dog
- Cow
- Hamster
- Rabbit
- Pig
- Sheep
- Insect
- Yeast



Anti- β -Tubulin antibody



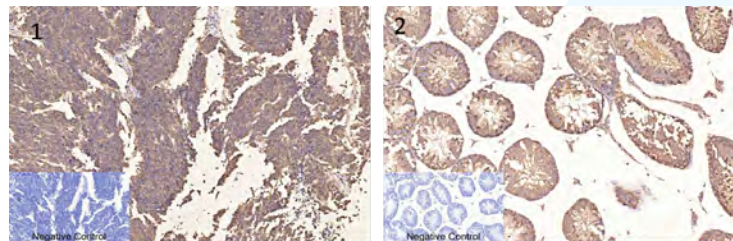
Model	STJ96932
Gene	TUBB3
Clone ID	5G3
Immunogen	Synthetic Peptide
Isotype	IgG1
Purification	Affinity-purified from mouse ascites by affinity-chromatography
Specificity	Detects endogenous β -tubulin protein.

Other Applications

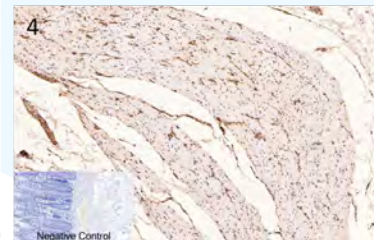
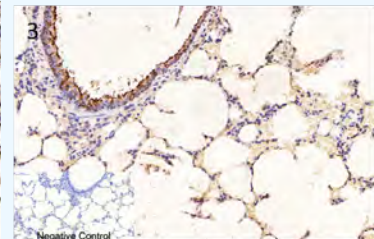
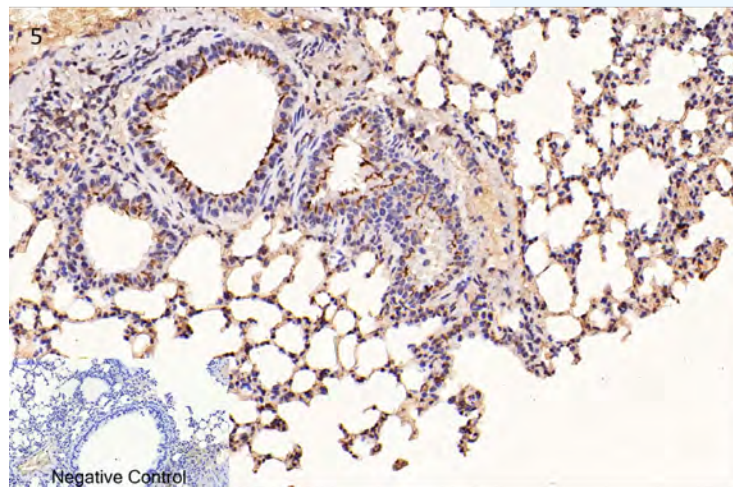
- Western Blot

Other Reactivity

- Monkey
- Dog
- Chicken
- Hamster
- Rabbit
- Sheep
- Insect
- Yeast



1. Human lung cancer
2. Mouse testis
3. Rat lung
4. Mouse colon cancer
5. Mouse lung



Anti-PCNA antibody



STJ96933

PCNA

12D10

Synthetic Peptide

IgG1

Affinity-purified from mouse ascites by affinity-chromatography

The antibody detects endogenous PCNA protein.

Model

Gene

Clone ID

Immunogen

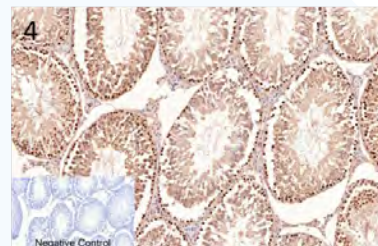
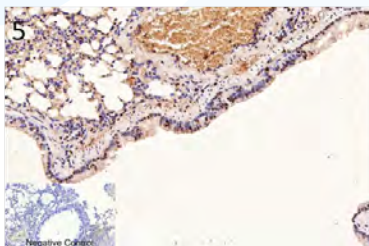
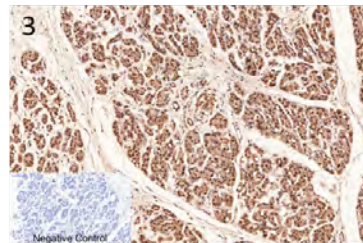
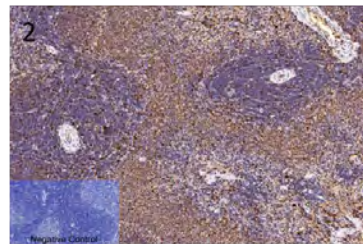
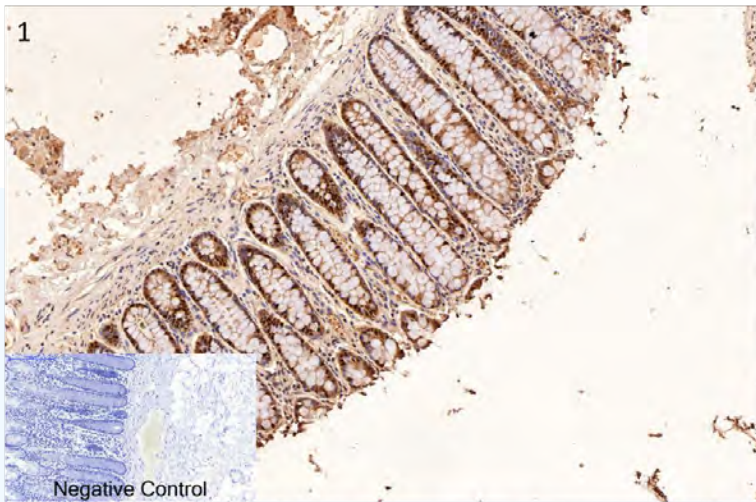
Isotype

Purification

Specificity

Other Applications

- Western Blot



1. Human colon
2. Mouse liver
3. Human stomach
4. Rat testis
5. Mouse lung



Anti-Lamin B1 antibody



Model	STJ96938
Gene	LMNB1
Clone ID	7C11
Immunogen	Recombinant Protein
Isotype	IgG1
Purification	Affinity-purified from mouse ascites by affinity-chromatography
Specificity	The antibody detects endogenous Lamin B1 protein.

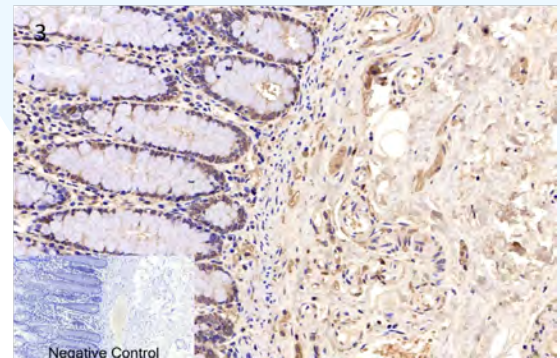
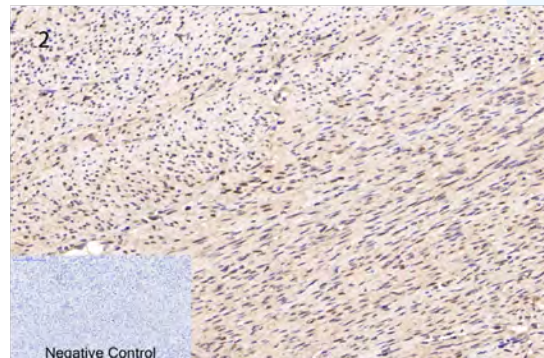
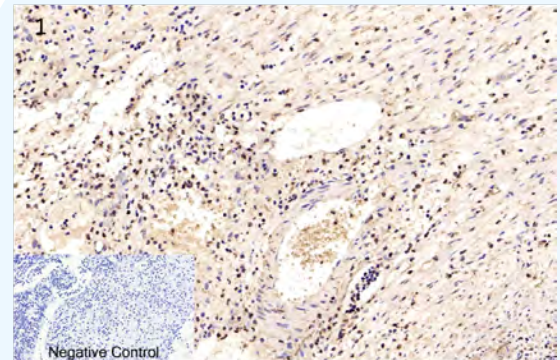
Other Applications

- Western Blot
- Immunoprecipitation

Other Reactivity

- Rat
- Mouse

1. Appendix
2. Uterus
3. Colon



Mouse Monoclonal Anti-Human, Mouse & Rat

Anti- β I tubulin antibody



STJ96939

TUBB1

3F7

Synthetic Peptide

IgG1

Affinity-purified from mouse ascites by affinity-chromatography

Detects endogenous β I tubulin proteins.

Model

Gene

Clone ID

Immunogen

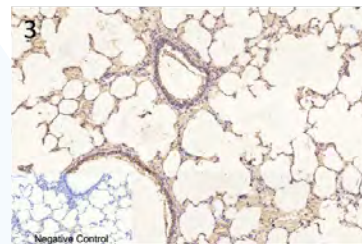
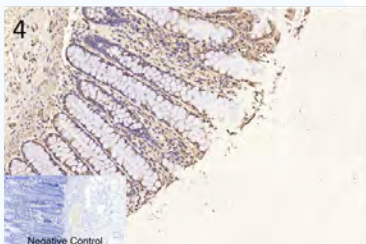
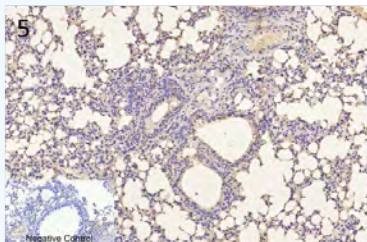
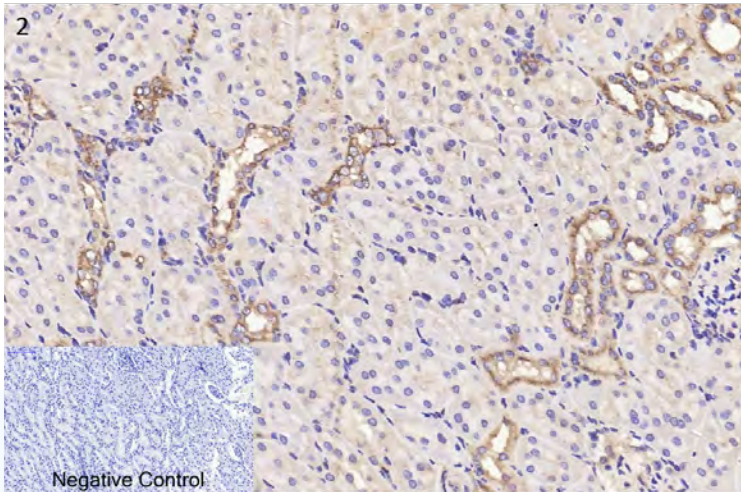
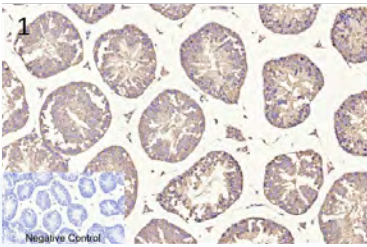
Isotype

Purification

Specificity

Other Applications

- Western Blot



1. Mouse testis
2. Rat kidney
3. Rat lung
4. Human colon
5. Mouse lung



Anti-Histone H3 antibody



Model	STJ96940
Gene	HIST1H3A
Clone ID	1G1
Immunogen	Recombinant Protein
Isotype	IgG1
Purification	Affinity-purified from mouse ascites by affinity-chromatography
Specificity	The antibody detects endogenous Histone H3 protein.

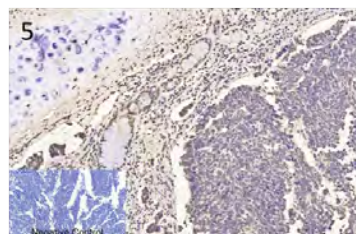
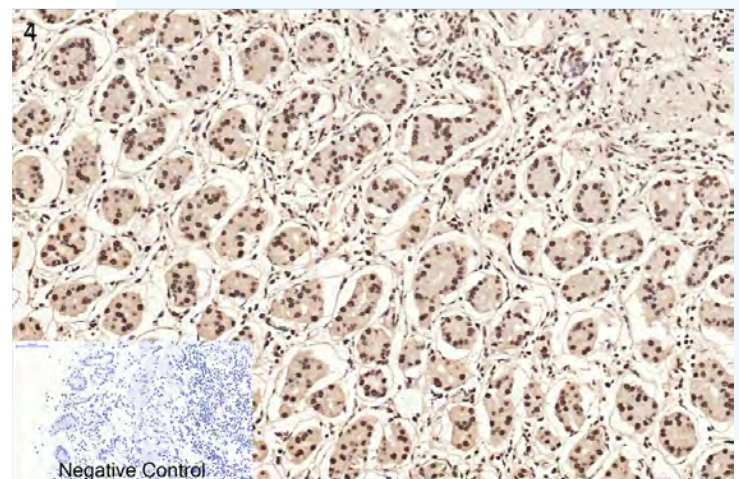
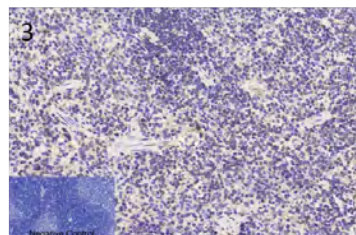
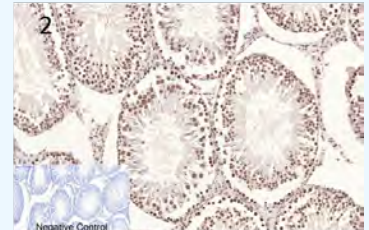
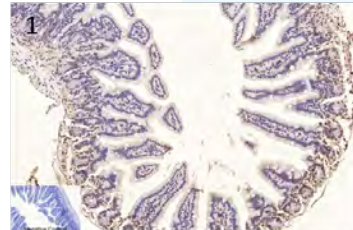
Other Applications

- Western Blot
- Immunofluorescence
- Immunoprecipitation

Other Reactivity

- Yeast

1. Mouse colon
2. Rat testis
3. Rat spleen
4. Human stomach
5. Human lung cancer



Anti-GFAP antibody



STJ96961

GFAP

5C8

Synthetic Peptide

IgG1

Affinity-purified from mouse ascites by affinity-chromatography

Detects endogenous GFAP

Model

Gene

Clone ID

Immunogen

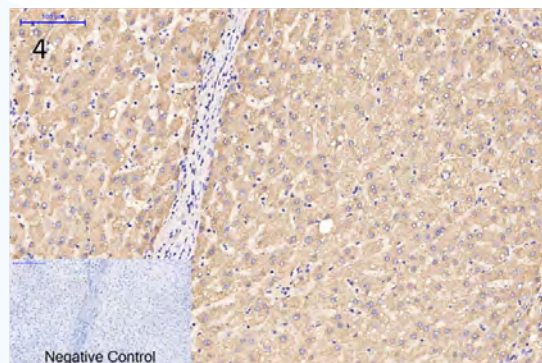
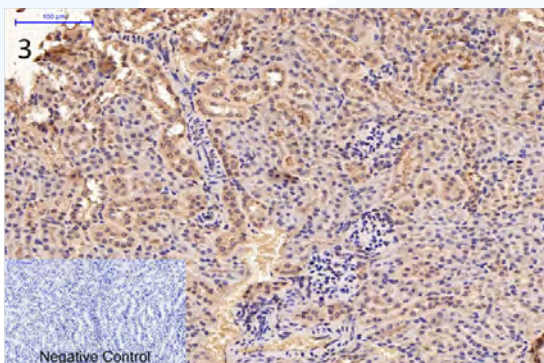
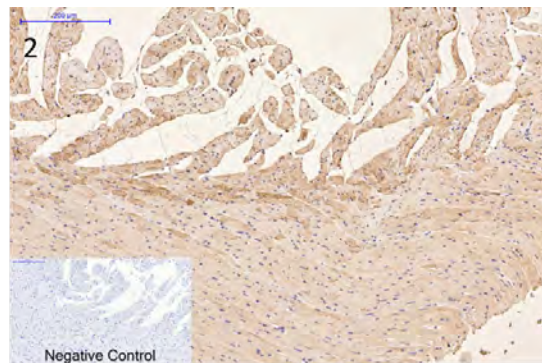
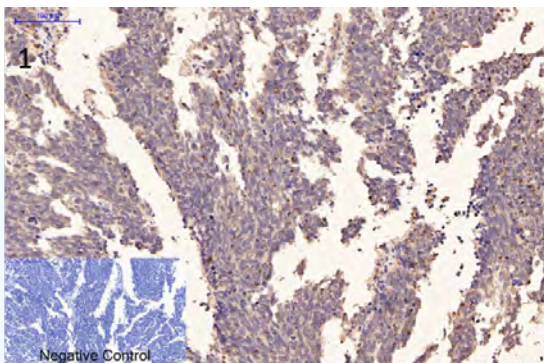
Isotype

Purification

Specificity

Other Applications

- Western Blot



1. Rat lung
2. Rat heart

3. Mouse kidney
4. Human liver



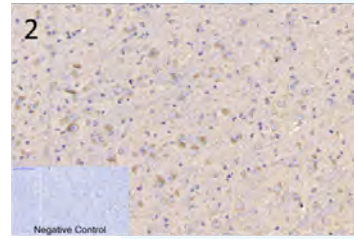
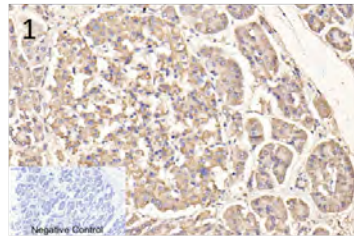
Anti-CD4 antibody



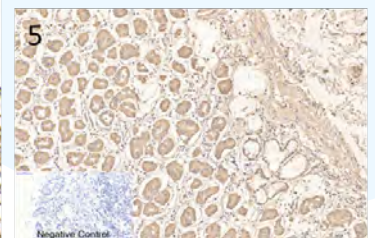
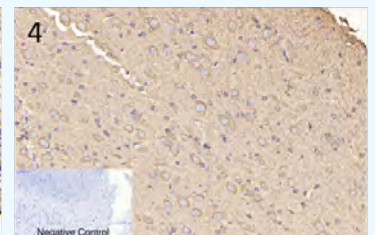
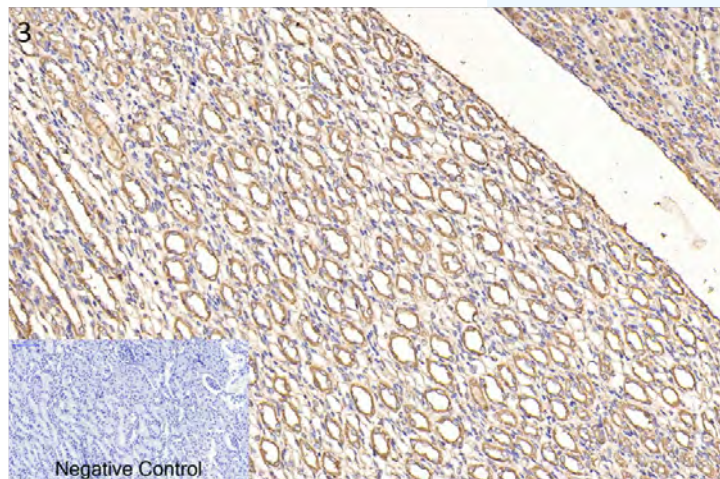
Model	STJ96972
Gene	CD4
Clone ID	11A1
Immunogen	Synthetic Peptide
Isotype	IgG1
Purification	Affinity-purified from mouse ascites by affinity-chromatography
Specificity	The antibody detects endogenous CD4 proteins.

Other Applications

- Immunofluorescence



1. Human stomach cancer
2. Mouse brain
3. Rat kidney
4. Rat brain
5. Human stomach



Anti-Caspase 9 antibody



STJ96979

CASP9

3-20

Synthetic Peptide

IgG1

Affinity-purified from mouse ascites by affinity-chromatography

Detects endogenous Caspase 9 protein.

Model

Gene

Clone ID

Immunogen Region

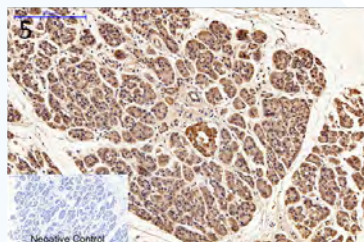
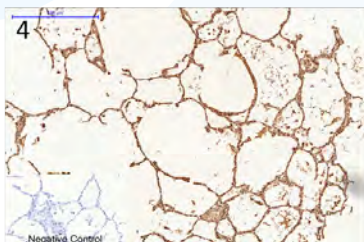
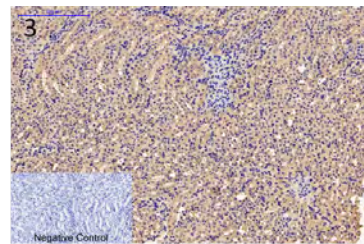
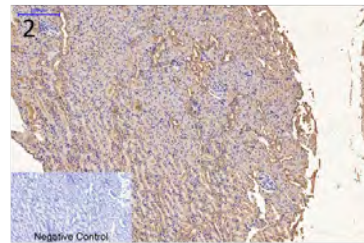
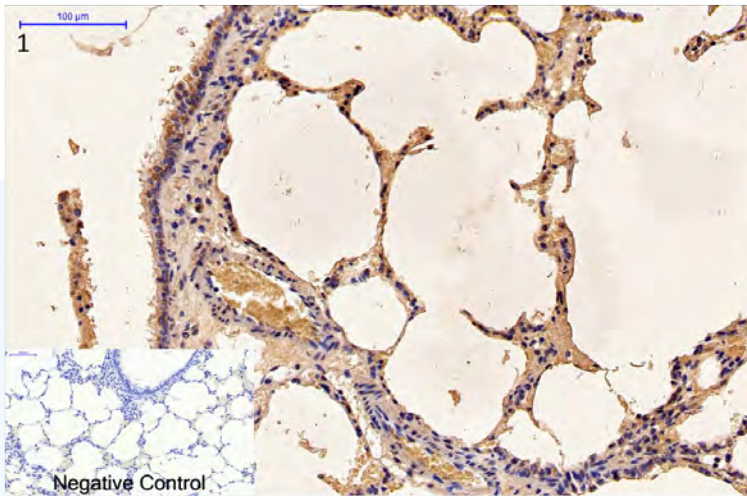
Isotype

Purification

Specificity

Other Applications

- Western Blot
- Immunoprecipitation



1. Rat lung
2. Rat kidney
3. Mouse kidney
4. Human lung
5. Human stomach



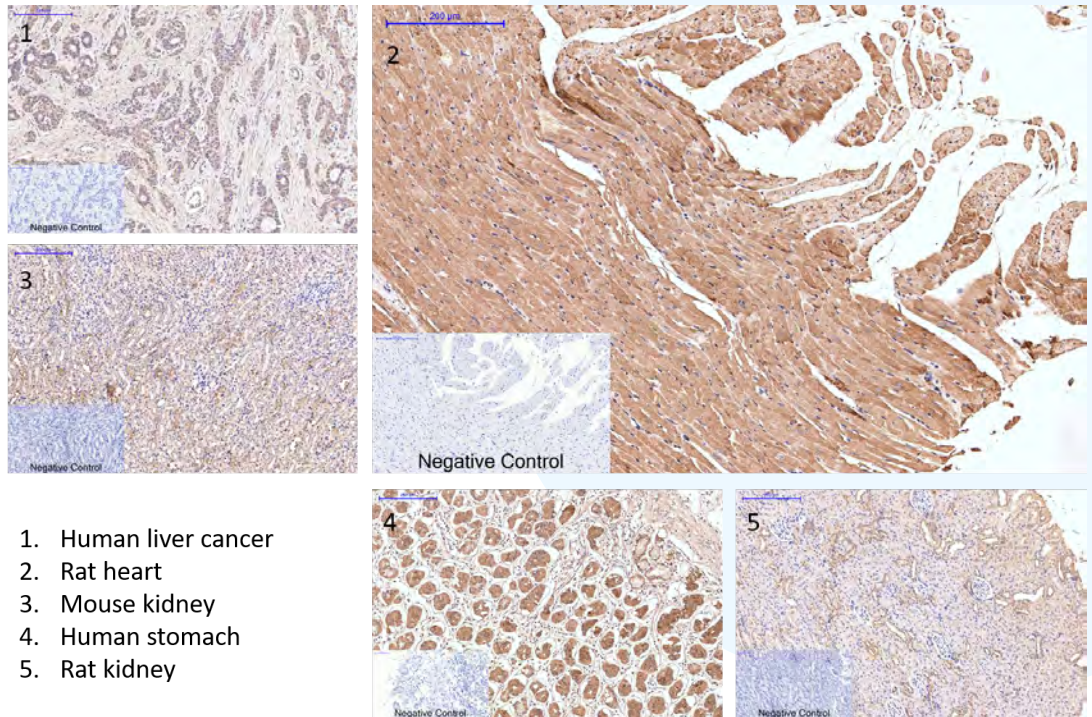
Anti-Collagen III antibody



Model	STJ97025
Gene	COL3A1
Clone ID	Q76
Immunogen	Synthetic Peptide
Isotype	IgG1
Purification	Affinity-purified from mouse ascites by affinity-chromatography
Specificity	Detects endogenous Collagen III protein.

Other Applications

- Western Blot



Mouse Monoclonal Anti-Human, Mouse & Rat

Anti-Caspase-8 antibody



STJ97394

CASP8

2G12

Recombinant Protein

IgG1

Affinity-purified from mouse ascites by affinity-chromatography

Detects endogenous Caspase-8

Model

Gene

Clone ID

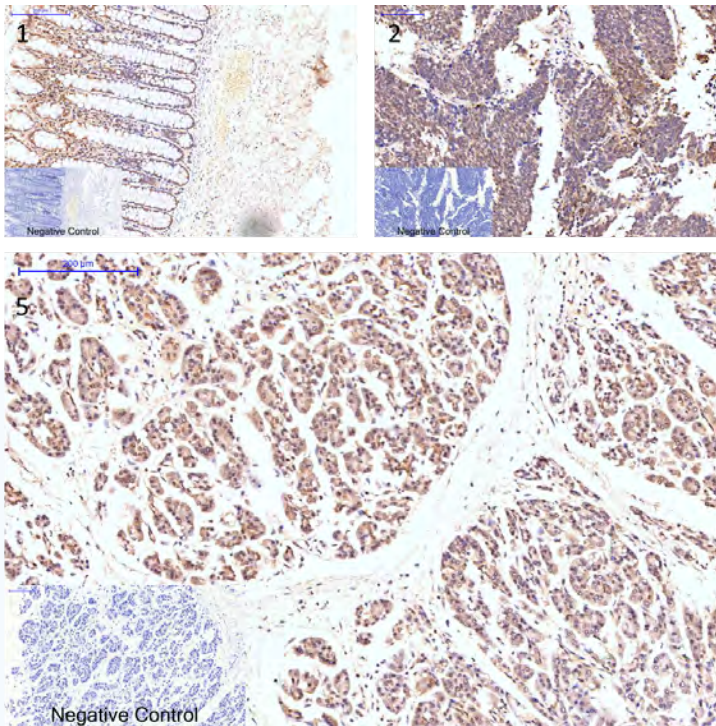
Immunogen

Isotype

Purification

Specificity

1. Human colon
2. Human lung cancer
3. Human tonsil
4. Mouse brain
5. Human stomach



Other Applications

- Western Blot

Other Reactivity

- Rat



Mouse Monoclonal Anti-Human, Mouse & Rat

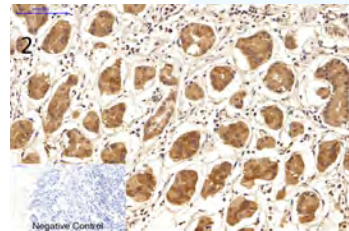
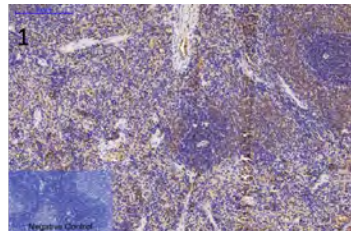
Anti-LC3A antibody



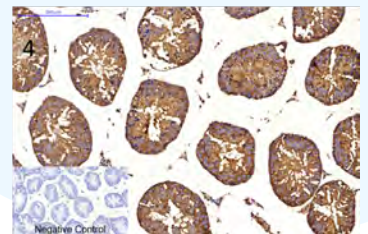
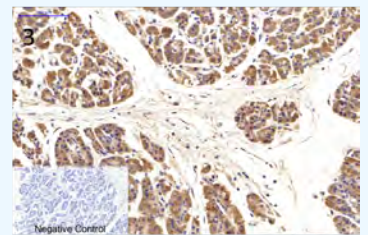
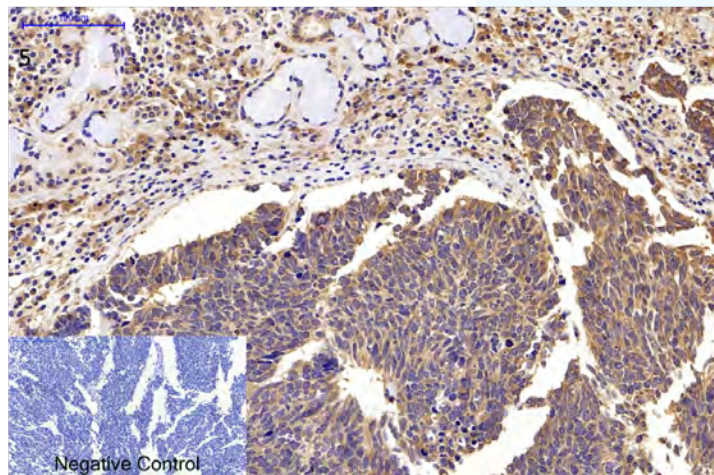
Model	STJ97755
Gene	MAP1LC3A
Clone ID	5G10
Immunogen	Synthetic Peptide
Isotype	IgG1
Purification	Affinity-purified from mouse ascites by affinity-chromatography
Specificity	Detects endogenous levels of LC3A

Other Applications

- Western Blot



1. Rat spleen
2. Human stomach
3. Human stomach
4. Mouse testis
5. Human lung cancer



Anti-CHOP antibody



STJ97774

DDIT3

2B1

Synthetic Peptide

10-90aa

IgG1

Affinity-purified from mouse ascites by affinity-chromatography

Detects endogenous levels of DDIT3

Model

Gene

Clone ID

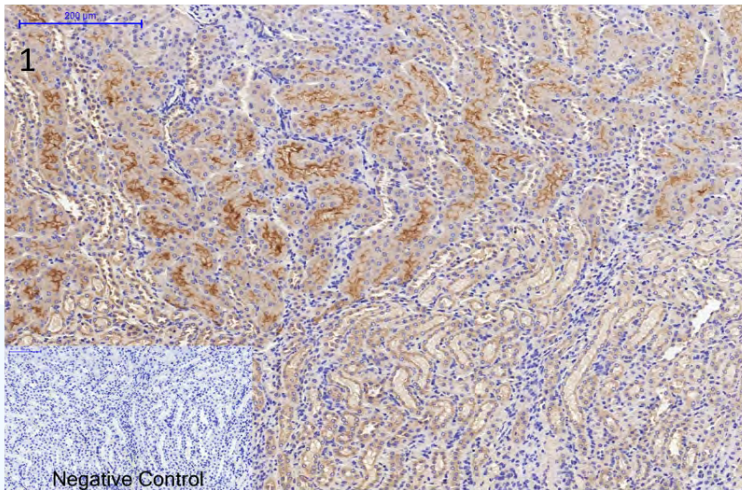
Immunogen

Immunogen Region

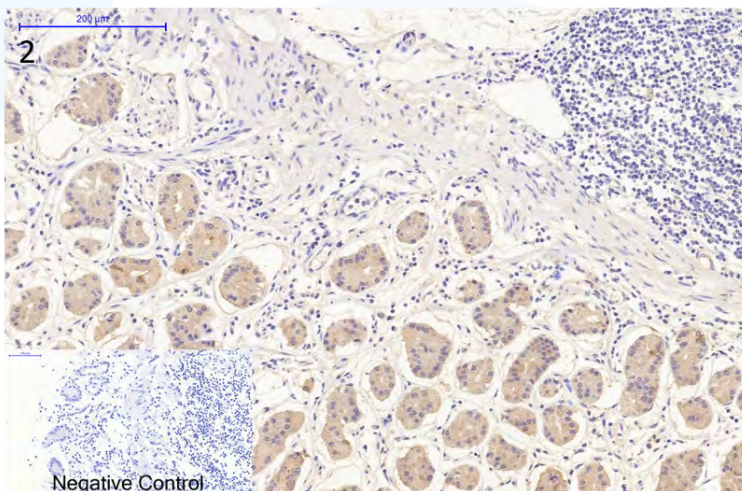
Isotype

Purification

Specificity



1. Mouse kidney



2. Human stomach

Other Applications

- Western Blot

Other Reactivity

- Rat

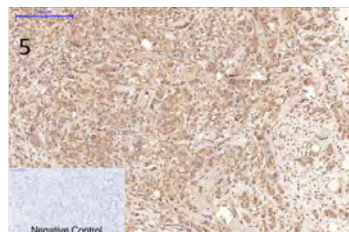
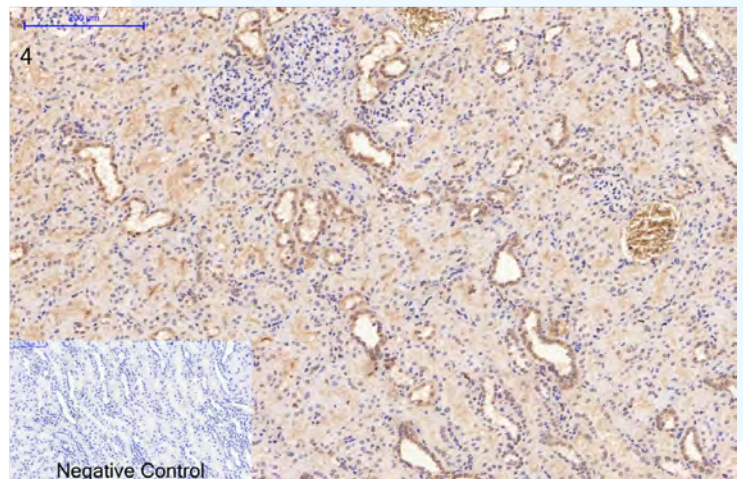
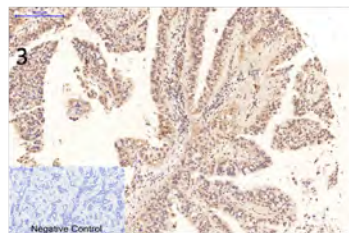
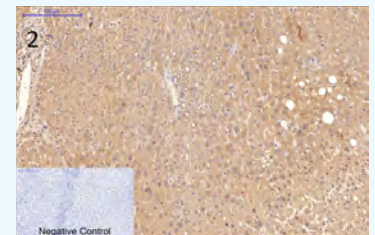
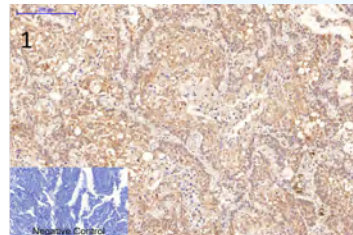


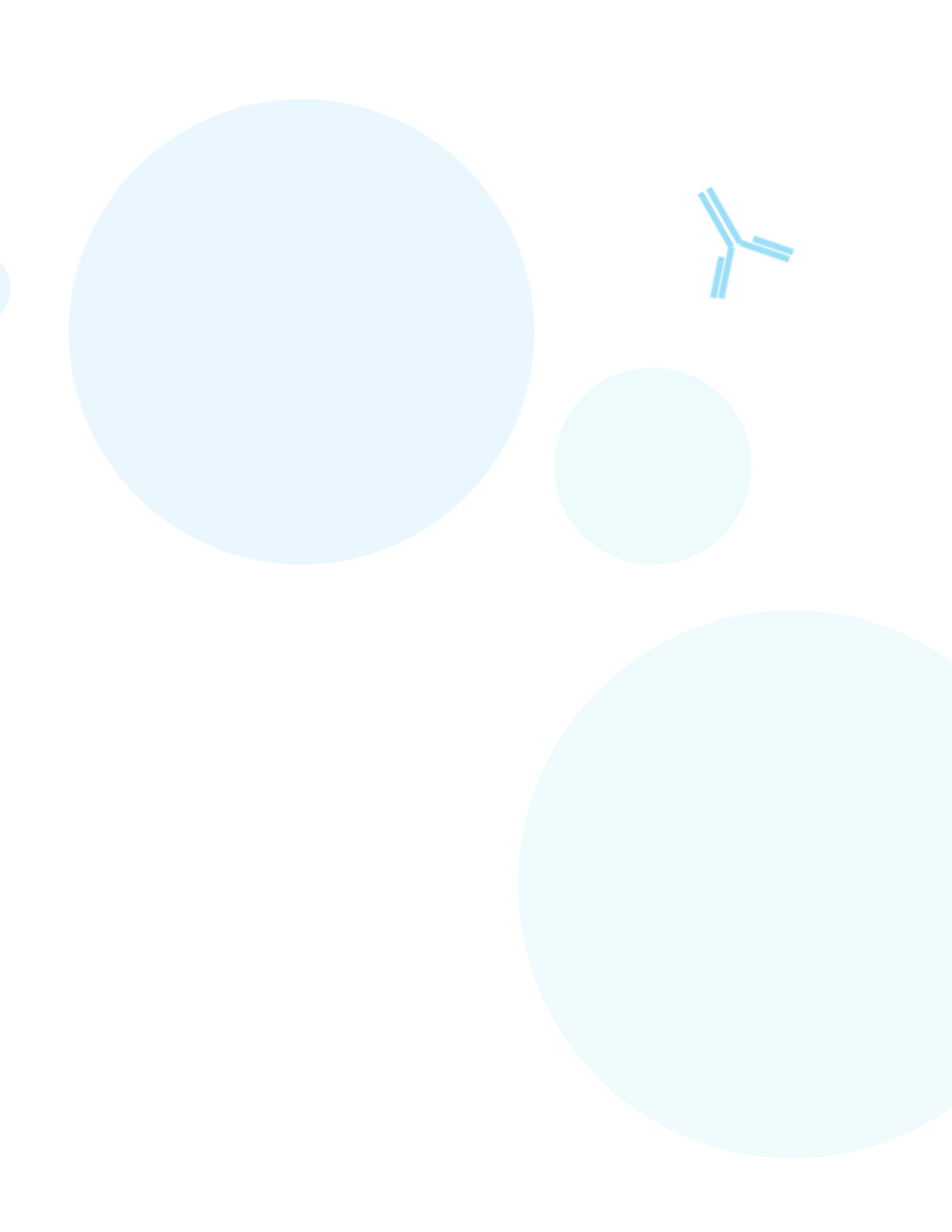
Anti-phospho-MLKL (S358) antibody



Model	STJ97776
Gene	MLK
Clone ID	6F8
Immunogen	Synthetic Peptide
Isotype	IgG1
Purification	Affinity-purified from mouse ascites by affinity-chromatography
Specificity	Detects endogenous levels of MLKL

1. Lung cancer
2. Liver
3. Liver cancer
4. Kidney
5. Breast







St John's Laboratory

Knowledge Dock Business Centre
University Way
London
E16 2RD

Phone: +44 (0)208 223 3081

Fax: +44(0)207 681 2580

Information: info@stjohnslabs.com

Technical: support@stjohnslabs.com

Orders: order@stjohnslabs.com

website: www.stjohnslabs.com



St John's Laboratory

Explore More www.stjohnslabs.com