

ANTIBODIES BY APPLICATION

Higher Affinity | Higher Sensitivity | Higher Specificity



A selection of Over 460 Rabbit and Mouse Monoclonal Antibodies

For Use in Clinical and Research Applications

ALK-1, RBT-ALK1
Amyloid Beta, RBT-A4
B7H3/CD276, RBT-B7H3
bcl-6, RBT-bcl6
CD3 Epsilon, RBT-CD3e
CD3, RBT-CD3
CD4, RBT-CD4
CD5, RBT-CD5
CD25, RBT-CD25
CD33, RBT-CD33
CDK2, RBT-CDK2
COX-2, RBT-COX2
Cyclin B1, RBT-B1
Cyclin D1, RBT14



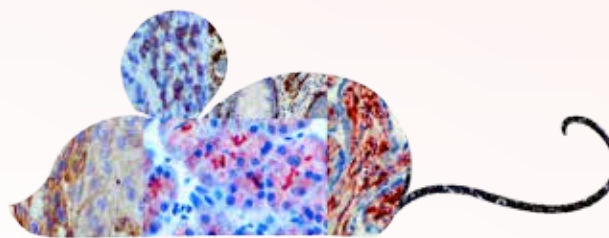
**Rabbit Monoclonal
RBT Clones**

DOG1, RBT-DOG1	iNOS, RBT-iNOS
Estrogen Receptor, RBT11	MCM2, RBT-MCM2
HER-2 neu, RBT-HER2	MCM5, RBT-MCM5
HER-3/c-erbB-3, RBT-HER3	MSH2, RBT-MSH2

NRAS (Q61R), RBT-NRAS
PAX-5, RBT-PAX-5
PD-L1/CD274, RBT-PDL1
PDGFR-B, RBT-PDGFRB
Progesterone Receptor, RBT22
PSA, RBT-PSA
PTEN, RBT-PTEN
SMAD/DPC4, RBT-SMAD4
TdT, RBT-TdT
Topoisomerase IIa, RBT-Topo2a
VEGF, RBT-VEGF

- Extensive protein analysis and protein immunogenicity of targeted epitopes.
- High sensitivity, specificity, and low background.
- The RBT and BSB clones are validated IVD antibodies for Immunohistochemistry.

ACTH, BSB-25
Actin, Smooth Muscle, BSB-15
Adipophilin / ADRP, BSB 91
Alpha-Fetoprotein, BSB-23
Alpha Synuclein, BSB-114
Androgen Receptor, BSB-4
Annexin A1, BSB-95
ATRX, BSB-108
BAPI, BSB-109
bcl-2, BSB-5
bcl-6, BSB-26
bcl-10, BSB-22
Caldesmon, BSB-19
Calponin, BSB-20
CD6, BSB-54
CD19, BSB-97
CD44, BSB-12
CD57, BSB-10
CD68, BSB-8
CD99, BSB-9
CD123, IL-3Ra, BSB-59
CEA, BSB-13



**Mouse Monoclonal
BSB Clones**

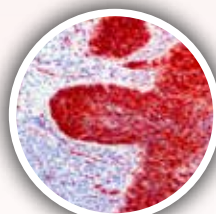
CTLA-4 / CD152, BSB 88	IgG, BSB-40
Cytokeratin 17, BSB-33	IgG4, BSB-96
Cytokeratin 19, BSB-34	IgM, BSB-41
Desmoglein-3, BSB-61	Insulin, BSB-42
Estrogen Receptor, BSB-1	Kappa Light Chains, BSB-58
Fascin, BSB-36	Lambda, BSB-16
FSH, BSB-55	LH, BSB-53
GH, BSB-99	Maspin, BSB 92
Glucagon, BSB-111	MDM2, BSB-64
hCG, BSB-38	MUC1, BSB-44
Helicobacter pylori, BSB-37	MUC2, BSB-45
HER-2 neu. BSB-3	Myoglobin, BSB-104
HPV, BSB-66	
IgA, BSB-39	

Myosin, Smooth Muscle Heavy Chain, BSB-17
Napsin A, BSB-112
NGFR, BSB-18
NSE, BSB-94
Osteonectin / SPARC, BSB-93
OX40 / CD134, BSB-90
Parafibromin, BSB-50
PTH, BSB-24
PGP 9.5, BSB-46
PLAP, BSB-47
Progesterone Receptor, BSB-2
PSA, BSB-7
SMAD4 /DPC4, BSB-63
Somatostatin, BSB-113
SOX-10, BSB-62
TAG-72, BSB-21
Tau, BSB-115
Thyroglobulin, BSB-49
TSH, BSB-56
Tyrosinase, BSB-6

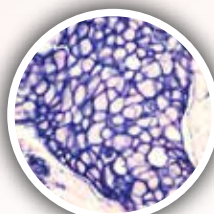
Antibodies by Applications

Breast Cancer Antibodies	
Actin, Smooth Muscle	BSB-15
ALDH1A1, RMab	EP168
Androgen Receptor	BSB-4
B7H3/CD276, RMab	RBT-B7H3
Bax, RMab	E63
BCA-225	Cu-18
bcl-2	BSB-5
bcl-2, RMab	EP36
Bclx, RMab	EP94
Beta-Catenin	14
Beta-Catenin, RMab	EP35
c-Met/HGFR, RMab	EP1454Y
CA-125	OC125
CA-125, RMab	EP48
CA15-3	DF3
Caldesmon	BSB-19
Calponin	BSB-20
CD10	56C6
CD10, RMab	EP195
CD31	1A10
CD44	BSB-12
CD45RA	4KB5
CD45RO	UCHL-1
CD68	BSB-8
CD68	KP-1
CD71	10F11
CD105/Endoglin	Polyclonal
CD105, RMab	EP274
CDK2, RMab	RBT-CDK2
CDK4, RMab	EP180
Claudin-1	Polyclonal
Claudin-5, RMab	EP224
Clusterin/Apolipoprotein J, RMab	EP181
Collagen Type IV	CIV22
Cyclin B1, RMab	RBT-B1
Cyclin D1, RMab	RBT14
Cyclin D1, RMab	EP12
Cyclin E1, RMab	EP126
Cytokeratin 5, RMab	EP24
Cytokeratin 5 & 6	D5/16B4
Cytokeratin 5 & 6, RMab	EP24 & EP67

Breast Cancer Antibodies	
Cytokeratin 5 & 14, RMab	EP24 & EP61
Cytokeratin 7	OV-TL 12/30
Cytokeratin 7, RMab	EP16
Cytokeratin 8, RMab	EP17
Cytokeratin 14	LL002
Cytokeratin 14, RMab	EP61
Cytokeratin 15, RMab	EP14
Cytokeratin 17	BSB-33
Cytokeratin 17, RMab	EP98
Cytokeratin 18, RMab	EP30
Cytokeratin 19	BSB-34
Cytokeratin 19, RMab	EP72
Cytokeratin 35BH11	35betaH11
Cytokeratin Cocktail, AE1&AE3	AE1/AE3
Cytokeratin LMW/AE1	AE1



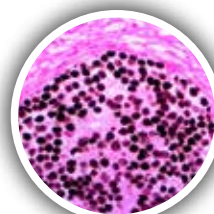
CDK4, RMab



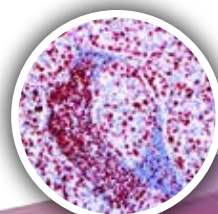
HER-2 neu

Breast Cancer Antibodies	
Cytokeratin HMW/AE3	AE3
Cytokeratin OSCAR	OSCAR
E-Cadherin, RMab	EP6
EGFR	31G7
EGFR Phospho, RMab	EP11
EMA	E29
Estrogen Receptor	BSB-1
Estrogen Receptor, RMab	RBT11
Estrogen Receptor, RMab	EP1
FOXA1/HNF-3A	Polyclonal
FOXA1/HNF-3A, RMab	EP277
FOXP1, RMab	EP137
FOXP3	Polyclonal

Breast Cancer Antibodies	
FOXP3, RMab	EP340
GATA 3	L50-823
GATA 3, RMab	EP368
GCDFP-15	23A3
GCDFP-15, RMab	EP95
HER-2 neu	BSB-3
HER-2 neu, RMab	RBT-HER2
HER-2 neu, RMab	EP3
HER-2 neu Phospho, RMab	EP123
HER-3, RMab	RBT-HER3
HLA-DR alpha chain, RMab	EP96
HLA-DRB1 beta chain, RMab	EP191
HSP-27	G3.1
Ki-67, RMab	EP5
Mammaglobin, RMab	EP249
Maspin	BSB-92
MCM3, RMab	EP202
MDM2	BSB-64
MDR-1	JSB-1
MDR-1, RMab	EP271
MMP-9, RMab	EP127
MUC1	BSB-44
MUC1, RMab	EP85
Myosin Smooth Muscle	BSB-17
Nestin, RMab	EP287
NGFR	BSB-18
NKX3.1, RMab	EP356
Osteonectin/SPARC	BSB-93
p27	SX53G8
p40, RMab	ZR8
p53	DO7
p63, RMab	EP174

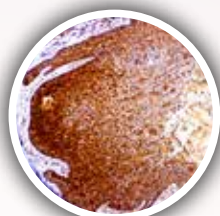


GATA 3, RMab

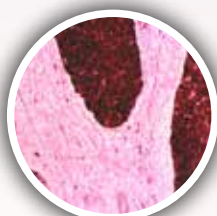


Ki67, RMab

Breast Cancer Antibodies	
p120 Catenin, RMAb	EP66
Progesterone Receptor	BSB-2
Progesterone Receptor, RMAb	RBT22
Progesterone Receptor, RMAb	EP2
PTEN	6H2.1
PTEN, RMAb	RBT-PTEN
S100A8/MRP8, RMAb	EP90
S100A9, RMAb	EP185
SALL4	6E3
SALL4, RMAb	EP299
Survivin, RMAb	EP119
TAG-72	BSB-21
Topoisomerase IIa, RMAb	RBT-Topo2a



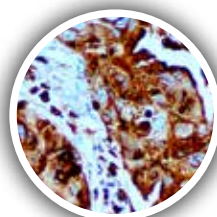
HIF-1a, RMAb



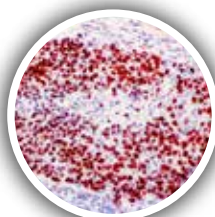
Stathmin, RMAb

Carcinoma of Unknown Primary Site	
Arginase-1, RMAb	EP 261
Cadherin 17/Li-Cadherin, RMAb	EP86
CDX2, RMAb	EP25
CEA	BSB-13
CEA	Polyclonal
Chromogranin A	LK2H10
Cytokeratin 5, RMAb	EP24
Cytokeratin 7	OV-TL 12/30
Cytokeratin 7, RMAb	EP16
Cytokeratin 17	BSB-33
Cytokeratin 17, RMAb	EP98
Cytokeratin 20	Ks20.8
Cytokeratin 20, RMAb	EP23
Cytokeratin LMW CAM5.2	CAM5.2
Cytokeratin Cocktail, AE1 & AE3	AE1/AE3
Cytokeratin OSCAR	OSCAR
Estrogen Receptor	BSB-1

Carcinoma of Unknown Primary Site	
Estrogen Receptor, RMAb	RBT-11
Estrogen Receptor, RMAb	EP1
GATA3	L50-823
GATA3, RMAb	EP368
GCDPF-15, RMAb	EP95
Hepatocyte Specific Antigen	OCH1E5
Mammaglobin, RMAb	EP249
Napsin A	BSB-112
Napsin A, RMAb	EP205
NKX3.1, RMAb	EP356
p40, RMAb	ZR8
p63, RMAb	EP174
PAX-6, RMAb	EP341
PAX-8, RMAb	ZR-1
PAX-8, RMAb	EP298
Progesterone Receptor	BSB2
Progesterone Receptor, RMAb	RBT22
Progesterone Receptor, RMAb	EP2
Prostein/P501S, RMAb	ZR-9
PSA	BSB-7
PSA, RMAb	RBT-PSA
PSAP	PASE/4LJ
PSAP, RMAb	EP53
PSMA, RMAb	EP192
S100	4C4.9
S100 Beta, RMAb	EP32
Synaptophysin	Polyclonal
Synaptophysin, RMAb	EP158
TFE3, RMAb	EP285
TTF-1	8G7G3/1
Villin	CWWB1
Villin, RMAb	EP163
WT-1	6F-H2

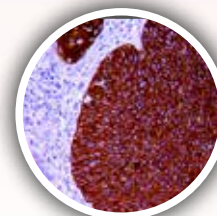


Napsin A

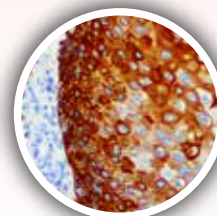


p53

Cervical Cancer Antibodies	
CA-125	OC125
CA-125, RMAb	EP48
CD45RA	4KB5
CD117, RMAb	EP10
CEA	BSB-13
CEA	Polyclonal
Clusterin/Apolipoprotein J, RMAb	EP181
Cyclin B1, RMAb	RBT-B1
Cyclin E1, RMAb	EP126
Cytokeratin 16, RMAb	EP27
Cytokeratin 17	BSB-33
Cytokeratin 17, RMAb	EP98
FOXO1, RMAb	EP290
HIF-1a, RMAb	EP118
HPV	BSB-66
HPV16	CAMVIR-1
HSP-27	G3.1
IMP-3/1GF2BP3, RMAb	EP286
Ki-67, RMAb	EP5
MCM2, RMAb	RBT-MCM2
MCM3, RMAb	EP202



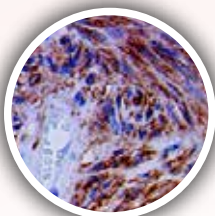
Cytokeratin 16



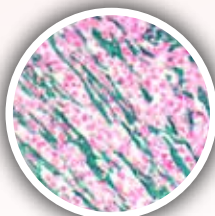
Cytokeratin 17

Cervical Cancer Antibodies	
MCM5, RMAb	RBT-MCM5
MUC4	8G7
MUC4, RMAb	EP256
p63, RMAb	EP174
Stathmin, RMAb	EP247
Topoisomerase IIa, RMAb	RBT-Topo2a
VEGF, RMAb	RBT-VEGF

Colon & G.I. Antibodies	
Actin, Smooth Muscle	BSB-15
ALDH1A1, RMab	EP168
Beta-Catenin	14
Beta-Catenin, RMab	EP35
BRAF V600E, RMab	RM8
c-Met/HGFR, RMab	EP1454Y
CA 19-9	121SLE
Cadherin 17/Li-Cadherin, RMab	EP86
Carbonic Anhydrase 9, RMab	EP161
CD34	QBEnd/10
CD34, RMab	EP88
CD44	BSB-12
CD45RA	4KB5
CD45RO	UCHL-1
CD103/ITGAE, RMab	EP206
CD105/ Endoglin	Polyclonal
CD105, RMab	EP274
CD117, RMab	EP10
CDX2, RMab	EP25
CEA	BSB-13



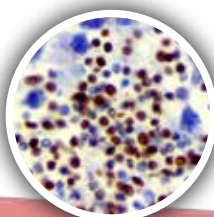
DOG1, RMab



Actin Smooth Muscle

Colon & G.I. Antibodies	
CEA	Polyclonal
Chromogranin A	LK2H10
Claudin-1	Polyclonal
COX-2, RMab	RBT-COX2
COX-2, RMab	EP293
Cycin E1, RMab	EP126
Cytokeratin 4, RMab	EP4
Cytokeratin 7	OV-TL 12/30
Cytokeratin 7, RMab	EP16
Cytokeratin 7 & CDX2, RMab	EP16 & EP25
Cytokeratin 8 & 18	B22.1/B23.1
Cytokeratin 8 & 18, RMab	EP17/EP30

Colon & G.I. Antibodies	
Cytokeratin 18, RMab	EP30
Cytokeratin 19	BSB-34
Cytokeratin 19, RMab	EP72
Cytokeratin 20	Ks20.8
Cytokeratin 20, RMab	EP23
Cytokeratin LMW CAM5.2	CAM5.2
Cytokeratin 35BH11	35betaH11
DOG1, RMab	RBT-DOG1
DOG-1, RMab	EP332
EGFR, MMab	31G7
EGFR Phospho, RMab	EP11
EpCAM/Epithelial Specific Antigen	BerEP4
EpCAM/Epithelial Specific Antigen	MOC-31
Gastrin, RPab	Polyclonal
Helicobacter Pylori, RPab	Polyclonal
Helicobacter Pylori, MMab	BSB-37
Helicobacter Pylori, RMab	EP279
HER-2 neu, MMab	BSB-3
HER-2 neu, RMab	RBT-HER2
HER-2 neu, RMab	EP3
HER-2 neu Phospho, RMab	EP123
HLA-DRB1 beta chain, RMab	EP191
IgG4, MMab	BSB-96
IgG4, RMab	EP138
IMP-3/1GF2BP3, RMab	EP286
Ki-67, RMab	EP5
LEF-1, RMab	EP310
Maspin, MMab	BSB-92
MLH1	G168-728
MMP-9, RMab	EP127
MSH2	G219-1129

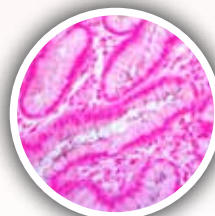


LEF-1, RMab

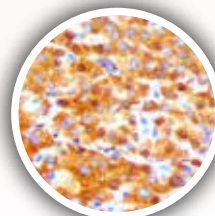


MUC4, RMab

Colon & G.I. Antibodies	
MSH2, RMab	RBT-MSH2
MSH6	44
MSH6, RMab	EP49
MUC1	BSB-44
MUC1, RMab	EP85
MUC2	BSB-45
MUC2, RMab	EP187
MUC4	8G7
MUC4, RMab	EP256
MUC5AC	CLH2
MUC6	CLH5
Osteonectin/SPARC	BSB-93
p53	DO7
PAX-5, RMab	RBT-PAX5
PAX-6, RMab	EP341
PDX1, RMab	EP139
PGP 9.5, MMab	BSB-46
PMS2, RMab	EP51
S100A6, RMab	EP313
S100P, RMab	EP186



Helicobacter pylori



SMAD4/DPC4, RMab

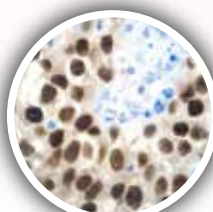
Colon & G.I. Antibodies	
SALL4	6E3
SALL4, RMab	EP299
SATB2, RMab	EP281
SMAD4/DPC4	BSB-63
SMAD4/DPC4, RMab	RBT-SMAD4
Somatostatin	Polyclonal
Somatostatin	BSB-113
Somastatin, RMab	EP130
SOX-9, RMab	EP317
Synaptophysin	Polyclonal
Synaptophysin, RMab	EP158
Villin	CWWB1
Villin, RMab	EP163

Endometrial & Genital Cancer Antibodies

bcl-2	BSB-5
bcl-2, RMab	EP36
CD10	56C6
CD10, RMab	EP195
CD44, MMab	BSB-12
Cyclin D1, RMab	RBT-14
Cyclin D1, RMab	EP12
Cyclin E1, RMab	EP126
Estrogen Receptor, MMab	BSB-1
Estrogen Receptor, RMab	RBT11
Estrogen Receptor, RMab	EP1
hPL, RPab	Polyclonal
hPL, RMab	EP241
Inhibin Alpha, RMab	EP378
IMP-3/1GF2BP3, RMab	EP286
MUC4, RMab	EP256
p21	DCS-60.2
p53	DO7



CD34



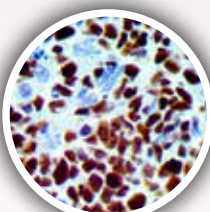
OCT-4, RMab

Endometrial & Genital Cancer Antibodies

Progesterone Receptor	BSB-2
Progesterone Receptor, RMab	RBT-22
Progesterone Receptor, RMab	EP2
PTEN	6H2.1
PTEN, RMab	RBT-PTEN
Retinoblastoma	1F8
SALL4	6E3
SALL4, RMab	EP299
Stathmin, RMab	EP247
Vimentin	V9
Vimentin, RMab	EP21

Endothelial Antibodies

ALDH1A1, RMab	EP168
CD31	1A10
CD34	QBend/10
CD34, RMab	EP88
CD105 / Endoglin, RPab	Polyclonal
CD105 / Endoglin, RMab	EP274
Claudin-5, RMab	EP224
ERG, RMab	EP111
Factor VIII-Related Antigen	Polyclonal
Fli-1	G146-222
Podoplanin/D2-40	D2-40
VEGF	RBT-VEGF



bcl6



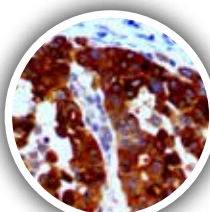
Glucagon

Gall Bladder & Pancreatic Cancer Antibodies

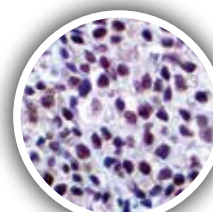
B7H3/CD276, RMab	RBT B7H3
bcl6	BSB-26
bcl6, RMab	EP278
bcl-10	BSB-22
Beta-Catenin	14
Beta-Catenin, RMab	EP35
CA 19-9	121SLE
Cadherin 17/LiCadherin, RMab	EP86
CD10	56C6
CD10, RMab	EP195
CDX2, RMab	EP25
CEA	BSB-13
CEA	Polyclonal
Chromogranin A	LK2H10
Collagen Type IV	CIV22
Cytokeratin 17	BSB-33
Cytokeratin 17, RMab	EP98
Cytokeratin LMW CAM5.2	CAM5.2
Cytokeratin 35BH11	35betaH11

Gall Bladder & Pancreatic Cancer Antibodies

Gastrin	Polyclonal
Glucagon	Polyclonal
Glucagon	BSB-111
Glucagon, RMab	EP74
HE4, RMab	EP370
IgG4	BSB-96
IgG4, RMab	EP138
IMP-3/1GF2BP3	EP286
Insulin	BSB-42
Insulin, RMab	EP125
Islet-1/ISL1, RMab	EP283
Maspin	BSB-92
Mesothelial	HBME-1
Mesothelin, RMab	EP140
MUC4	8G7
MUC4, RMab	EP256
Osteonectin/SPARC	BSB-93
PAX-6, RMab	EP341
PDX1, RMab	EP139
PGP 9.5	BSB-46
S100A6	EP313
S100A8/MRP8, RMab	EP90
S100P, RMab	EP186
SMAD4/DPC4	BSB-63
SMAD4/DPC4, RMab	RBT-SMAD4
Somatostatin	Polyclonal
Somatostatin	BSB-113
Somatostatin, RMab	EP130
SOX-9, RMab	EP317
Synaptophysin	Polyclonal
Synaptophysin, RMab	EP158
TAG-72	BSB-21
Villin	CWWB1
Villin, RMab	EP163



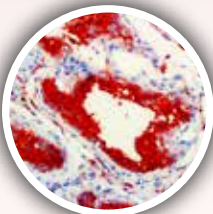
HE4, RMab



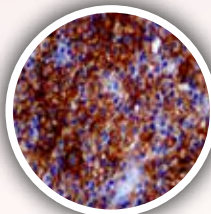
SOX10, RMab

Germ Cell Tumor Antibodies

Alpha-Fetoprotein	BSB-23
Alpha-Fetoprotein, RMab	EP209
CD117, RMab	EP10
Cytokeratin Cocktail, AE1 & AE3	AE1/AE3
Cytokeratin OSCAR	OSCAR
FOXP1, RMab	EP137
GCDFP-15	23A3
Glypican-3	1G12
hCG	BSB-38
OCT-4, RMab	EP143
p57	Kp10
PLAP	BSB-47
PLAP, RMab	EP194
SALL4	6E3
SALL4, RMab	EP299
SOX-2, RMab	EP103



Fascin



PD-L1, RMab

GIST Antibodies

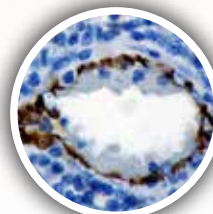
CD34	QBEnd/10
CD34, RMab	EP88
CD117, RMab	EP10
Desmin	D33
DOG-1, RMab	RBT-DOG1
DOG-1, RMab	EP332
S100	4C4.9
S100 Beta, RMab	EP32

Head & Neck Cancer Antibodies

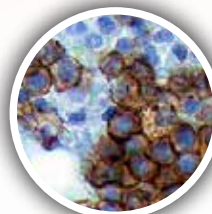
Androgen Receptor	BSB-4
Calcitonin	Polyclonal
Calcitonin, RMab	EP92
Calponin	BSB-20
CD117, RMab	EP10

Head & Neck Cancer Antibodies

Cytokeratin 4, RMab	EP4
Cytokeratin 7, MMab	OV-TL12/30
Cytokeratin 7, RMab	EP16
Cytokeratin 16, RMab	EP297
Desmoglein-3	BSB-61
Desmoglein-3, RMab	EP306
DOG-1, RMab	EP332
DOG-1, RMab	RBT-DOG1
Galectin-3	9C4
GFAP, MMab	G-A-5
GFAP, RMab	EP13
HPV	BSB-66
HSP-27	G3.1
MCM3, RMab	EP202
Mesothelial	HBME-1
p63, RMab	EP174
Parathyroid Hormone	BSB-24
SOX-10	BSB-62
SOX-10, RMab	EP268
Thyroglobulin	BSB-49
Thyroglobulin	2H11/6E1
Thyroglobulin, RMab	EP250
Thyroid Peroxidase, RMab	EP159



CD31



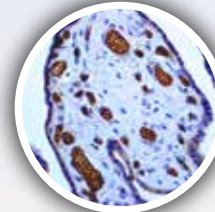
Spectrin

Hematopoietic Antibodies

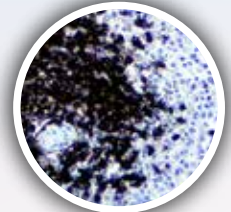
CD31	1A10
CD34	QBend/10
CD34, RMab	EP88
CD41/Integrin alpha IIb, RMab	EP178
CD61	2f2
CD138	B-A38
CD138, RMab	EP201
Clusterin/Apolipoprotein J, RMab	EP181

Hematopoietic Antibodies

Fli-1	G146-222
Glycophorin A	GA-R2
Spectrin	RBC2/3D5
Spectrin, RMab	EP251
Tryptase	G3
Tryptase, RMab	EP259



Glycophorin



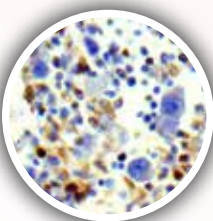
CD20

Hodgkin's & NHB Lymphoma Antibodies

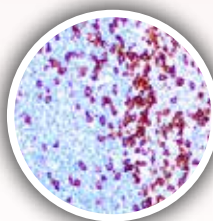
bcl6	BSB-26
bcl-6, RMab	EP278
bcl-6, RMab	RBT-bcl6
BOB.1, RMab	EP114
CD3 Epsilon, RMab	RBT-CD3e
CD3, RMab	RBT-CD3
CD10	56C6
CD10, RMab	EP195
CD15	MMA
CD15, RMab	EP272
CD19	BSB-97
CD19, RMab	EP169
CD20	L26
CD21, RMab	EP64
CD23	1B12
CD23, RMab	EP75
CD30	Ber-H2
CD45	2B11 & PD7/26
CD57	BSB-10
CD79a	JCB117
Cyclin E1, RMab	EP126
Epstein Barr Virus, LMP-1	CS1-4
Fascin	BSB-36
FOXO1, RMab	EP290
FOXP3	Polyclonal
FOXP3, RMab	EP340

Hodgkin's & NHB Lymphoma Antibodies

Granzyme B	Polyclonal
Granzyme B, RMab	EP230
hGAL/GCET2, RMab	EP316
IgA	BSB-39
IgD	Polyclonal
IgD, RMab	EP173
IgG	BSB-40
IgM	BSB-41
LAG-3, RMab	EP294
MUM-1, RMab	EP190
OCT-2, RMab	EP115
PAX-5, RMab	RBT-PAX5
PD-1/CD279, MMab	NAT-105
PD-1/CD279, RMab	EP239
PD-L1/CD274, RMab	RBT-PDL1
PU.1, RMab	EP18
TIA-1	TIA-1



LAG-3, RMab



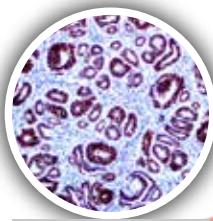
PD-1, RMab

Infectious Disease Antibodies

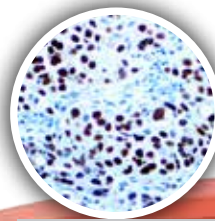
Adenovirus	20/11 & 2/6
Cytomegalovirus	8B1.2, 1G5.2 & 2D4.2
Epstein Barr Virus, LMP-1	CS1-4
Helicobacter pylori	Polyclonal
Helicobacter pylori	BSB-37
Helicobacter pylori, RMab	EP279
Hepatitis B Virus Core	Polyclonal
Hepatitis B Virus Surface Antigen	T9
Herpes Simplex Virus I	Polyclonal
Herpes Simplex Virus I	10A3
Herpes Simplex Virus II	Polyclonal
Herpes Simplex Virus I & II	Polyclonal
HHV-8, MMab	13B10
HPV	BSB-66
HPV16	CAMVIR-1
Mycobacterium Tuberculosis, RPab	Polyclonal
Parvovirus	R92F6
Pneumocystis jirovecii	3F6
SV40	Pab101
Toxoplasma gondii	Polyclonal
Treponema Pallidum	Polyclonal
Varicella Zoster Virus	SG1-1, SG1-SG4. NCP-1 & IE-62

Kidney Cancer & Urothelial Antibodies

CD57	BSB-10
CD61	2f2
CD63	NKI/C3
CD68	BSB-8
CD68	KP1
CD75	LN1
CD105/Endoglin	Polyclonal
CD105, RMab	EP274
CD117, RMab	EP10
Cytokeratin 7	OV-TL 12/30
Cytokeratin 7, RMab	EP16
Cytokeratin 8 & 18	B22.1 & B23.1
Cytokeratin 8 & 18, RMab	EP17 & EP30
Cytokeratin 14	LL002
Cytokeratin 14, RMab	EP61
Cytokeratin 20	Ks20.8
Cytokeratin 20, RMab	EP23
Cytokeratin LMW CAM5.2	CAM5.2
E-Cadherin, RMab	EP6
ERG, RMab	EP111
Inhibin Alpha, RMab	EP378
IMP-3/1GF2BP3, RMab	EP286
Ksp-Cadherin	4H6/F9
Myoglobin	Polyclonal
p63, RMab	EP174
Parvalbumin, RMab	EP300
PAX-2, RMab	EP235
PAX-8, RMab	EP298
PAX-8, RMab	ZR-1
PD-L1/CD274, RMab	RBT-PDL1
Renal Cell Carcinoma	PN-15
S100A1, RMab	EP184
S100A6, RMab	EP313



PAX-2, RMab



PAX-8 RMab

Immunotherapy Antibodies

B7H3/CD276, RMab	RBTB7H3
CD8	C8/144B
CD8, RMab	EP334
CTLA-4/CD152	BSB-88
FOXP3	Polyclonal
FOXP3, RMab	EP340
Granzyme B	Polyclonal
Granzyme B, RMab	EP230
LAG-3, RMab	EP294
OX40/CD134	BSB-90
PD-1 (CD279)	NAT-105
PD-1/CD279, RMab	EP239
PD-L1/CD274, RMab	RBT-PDL1

Kidney Cancer & Urothelial Antibodies

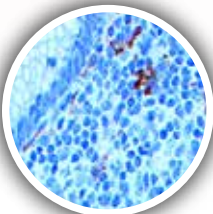
AMACRacemase / P504S, RMab	13H4
Amyloid A, RMab	EP335
BAP1	BSB-109
C3d	Polyclonal
C4d	Polyclonal
C4d, RMab	EP273
c-Met/HGFR, RMab	EP1454Y
Cadherin-6, RMab	EP217
Carbonic Anhydrase 9, RMab	EP161
CD10	56C6
CD10, RMab	EP195
CD45RO	UCHL-1

Kidney Cancer & Urothelial Antibodies

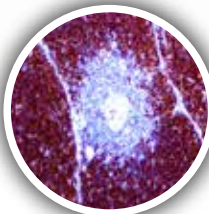
Smoothelin	R4A
Survivin, RMab	EP119
TFE3, RPab	Polyclonal
Thrombomodulin/ CD141, RMab	EP175
Uroplakin III	Polyclonal
Uroplakin III, RMab	EP321
Vimentin	V9
Vimentin, RMab	EP21
WT1	6F-H2

Leukemia/Histocytic Antibodies

A-1-Antichymotrypsin	Polyclonal
A-1-Antitrypsin	Polyclonal
ALDH1A, RMab	EP168
Annexin A1	BSB95
BRAF V600E, RMab	RM8
c-Myc, RPab	Polyclonal
c-Myc, RMab	EP121
CD1a, RMab	EP80
CD5, RMab	RBT-CD5
CD5, RMab	RED1
CD7	LP15
CD7, RMab	EP132
CD8	C8/144B
CD8, RMab	EP334
CD11b, RMab	EP45
CD11c, RMab	EP157



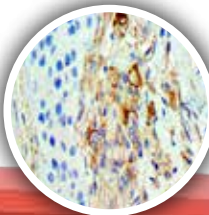
CD163, RMab



TdT, RMab



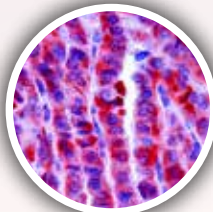
CD20



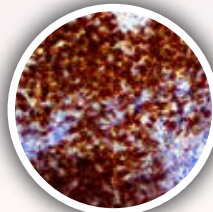
CD105, RMab

Leukemia/Histocytic Antibodies

CD13	38C12
CD13, RMab	EP117
CD14	7
CD14, RMab	EP128
CD16, RMab	EP364
CD19	BSB-97
CD19, RMab	EP169
CD20	L26
CD23	1B12
CD23, RMab	EP75
CD25	4C9
CD25, RMab	RBT-CD25
CD33, RMab	RBT-CD33



**BRAF V600E,
RMab**



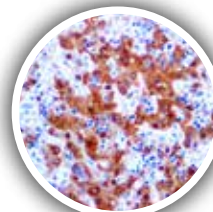
CD5, RMab

Leukemia/Histocytic Antibodies

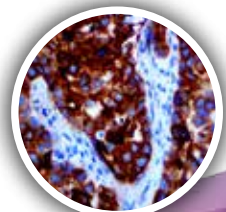
CD34	QBEnd/10
CD34, RMab	EP88
CD38	SPC32
CD38, RMab	EP135
CD45	2B11 & PD7/26
CD56	123C3.D5
CD61	2f2
CD68	BSB-8
CD68	KP1
CD71	10F11
CD74	LN2
CD79a	JCB117
CD99	BSB-9
CD103/ITGAE, RMab	EP206
CD117, RMab	EP10
CD123, IL-3Ra	BSB-59
CD163	10D6

Leukemia/Histocytic Antibodies

CD163, RMab	EP324
Factor XIIIa, RMab	EP292
Glycophorin A	GA-R2
Granzyme B	Polyclonal
Granzyme B, RMab	EP230
Hemaglobin A, RMab	EP124
HLA-DRB1 beta, RMab	EP191
IgA	BSB-39
IgG	BSB-40
IgM	BSB-41
LAG-3, RMab	EP294
Langerin	12D6
Langerin, RMab	EP349
LEF-1, RMab	EP310
Lysozyme	Polyclonal
Lysozyme, RMab	EP134
Macrophage/HAM-56	HAM-56
Myeloperoxidase	Polyclonal
Myeloperoxidase, RMab	EP151
Neutrophil Elastase, RMab	EP223
PAX-5, RMab	RBT-PAX5
PDGFR-B, RMab	RBT-PDGFRB
PU.1, RMab	EP18
Spectrin	RBC2/3D5
Spectrin, RMab	EP251
T-Bet/TBX-21, RMab	EP263
TCL1, RMab	EP105
TCR Beta F1	8A3
TdT	Polyclonal
TdT, RMab	RBT-TdT
TdT, RMab	EP266
TIA-1	TIA-1
TRAcP	9C5
Zap-70	2F3.2

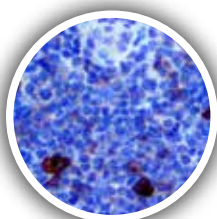


Arginase-1, RMab

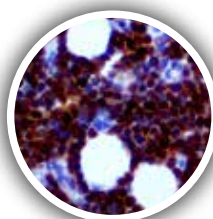


Glypican-3

Liver Cancer Antibodies	
A-1-Antichymotrypsin	Polyclonal
A-1-Antitrypsin	Polyclonal
Alpha-Fetoprotein	BSB-23
Alpha-Fetoprotein, RMab	EP209
Arginase-1, RMab	EP261
BAP1	BSB-109
Beta-Catenin	14
Beta-Catenin, RMab	EP35
Brachury	Polyclonal
c-Met/HGFR, RMab	EP1454Y
CD10	56C6
CD10, RMab	EP195
CD13	38C12
CD13, RMab	EP117
CD25	4C9
CD25, RMab	RBT-CD25
CD34	QEnd/10
CD34, RMab	EP88
CDK2, RMab	RBT-CDK2
CDX2, RMab	EP25
CEA	BSB-13
CEA	Polyclonal
Cytokeratin 8 & 18	B22.1 & B23.1
Cytokeratin 8 & 18, RMab	EP17 & EP30
Cytokeratin 19	BSB-34
Cytokeratin 19, RMab	EP72
Cytokeratin HMW 34BE12	34betaE12
Cytokeratin LMW CAM5.2	CAM5.2
EpCAM/Epithelial Specific Antigen	MOC-31
Glutamine Synthase	GS-6
Glypican-3	1G12
Hepatocyte Specific Antigen/Hep Par 1	OCH1E5
HLA-DR alpha chain, RMab	EP96
p53	DO7

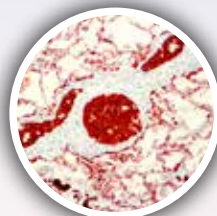


CD25

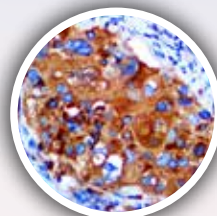


CDK2

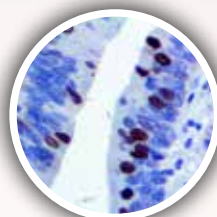
Liver Cancer Antibodies	
S100A9, RMab	EP185
SALL4	6E3
SALL4, RMab	EP299
SMAD4/DPC4	BSB-63
SMAD4/DPC4, RMab	RBT-SMAD4
SOX-9, RMab	EP317
Survivin, RMab	EP119
TTF-1	8G7G3/1
VEGF, RMab	RBT-VEGF



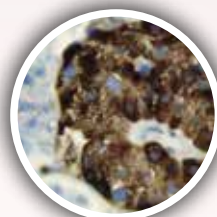
CK7/CDX2, RMab



Napsin, RMab



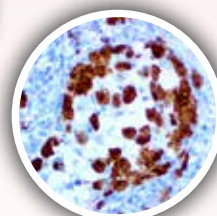
Survivin



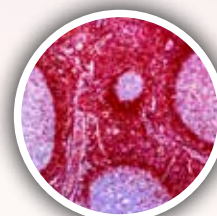
Chromogranin A

Lung Cancer Antibodies	
ALK-1, RMab	RBT-ALK1
ALK, RMab	EP302
Bax, RMab	E63
bcl-2	BSB-5
bcl-2, RMab	EP36
BG8 Lewis Y	F3
BRAF V600E, RMab	RM8
CA 15-3	DF3
Calretinin, RMab	EP1798
Carbonic Anhydrase 9, RMab	EP161
Caveolin 1, RMab	EP353
CD14	7
CD14, RMab	EP128
CD15	MMA
CD15, RMab	EP272
CD56	123C3.D5
CD74	LN2
CD105/Endoglin	Polyclonal
CD105, RMab	EP274

Lung Cancer Antibodies	
CDK2, RMab	RBT-CDK2
CDX2, RMab	EP25
CEA	BSB-13
CEA	Polyclonal
Chromogranin A	LK2H10
Claudin-5, RMab	EP224
Cyclin B1, RMab	RBT-B1
Cytokeratin 5, RMab	EP24
Cytokeratin 5&6	D5/16B4
Cytokeratin 5&6, RMab	EP24 & EP67
Cytokeratin 6, RMab	EP67
Cytokeratin 7	OV-TL 12/30
Cytokeratin 7, RMab	EP16
Cytokeratin 6 & CDKX2, RMab	EP16 & EP25
Cytokeratin 17	BSB-33
Cytokeratin, RMab	EP98
Cytokeratin 20	Ks20.8



ALK-1, RMab

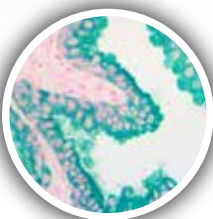


bcl2

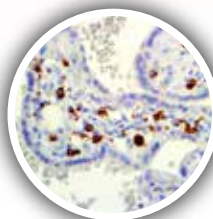
Lung Cancer Antibodies	
Cytokeratin 20, RMab	EP23
Cytokeratin LMW CAM5.2	CAM5.2
Cytokeratin Cocktail, AE1 & AE3	AE1/AE3
Cytokeratin LMW/AE1	AE1
Cytokeratin HMW/AE3	AE3
Cytokeratin OSCAR	OSCAR
Desmoglein-3	BSB-61
Desmoglein-3, RMab	EP306
EGFR	31G7
EGFR Phospho, RMab	EP11
EMA	E29
EpCAM/Epithelial Specific Antigen	Ber-EP4
EpCAM/Epithelial Specific Antigen	MOC-31
ERCC1, RMab	EP219
GLUT1, RMab	EP141

Lung Cancer Antibodies

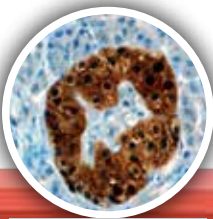
HE4, RMab	EP370
HLA-DR alpha chain, RMab	EP96
IMP-3/1GF2BP3, RMab	EP286
Ki-67, RMab	EP5
Maspin	BSB-92
Mesothelial	HBME-1
Mesothelin, RMab	EP140
MUC4	8G7
MUC4, RMab	EP256
Napsin A	BSB-112
Napsin A, RMab	EP205
NSE	BSB-94
p40, RMab	ZR8
p63, RMab	EP174
PAX-6, RMab	EP341
PD-L1/CD274, RMab	RBT-PD-L1
PGP 9.5	BSB-46
Podoplanin/D2-40	D2-40
S100A9, RMab	EP185
S100P	EP186
SOX-2, RMab	EP103
SOX-9, RMab	EP317
SOX-11	CL0142
STAT6	Polyclonal
STAT6, RMab	EP325
Synaptophysin	Polyclonal
Synaptophysin, RMab	EP158
TTF-1	8G7G3/1
WT1	6F-H2



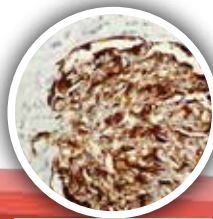
**Cytokeratin
OSCAR**



CD14



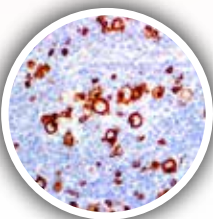
NSE



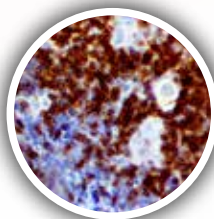
WT-1

Lymphoma Antibodies

ADLH1A, RMab	EP168
ALK-1, RMab	RBT-ALK1
ALK, RMab	EP302
bcl-2	(BSB-5) BCL2/A4
bcl-2, RMab	EP36
bcl6, RMab	EP278
bcl-6, RMab	RBT-bcl6
bcl-10	BSB-22
BOB.1, RMab	EP114
BRAF V600E, RMab	RM8
c-Myc	9 E10
c-Myc, RMab	EP121
CD1a	EP80
CD2	AB75
CD3, RMab	RBT-CD3
CD3 Epsilon, RMab	RBT-CD3e
CD4, RMab	RBT-CD4
CD5, RMab	RBT-CD5
CD5, RMab	RED1
CD6	BSB-54
CD7	LP15
CD7, RMab	EP132
CD8	C8/144B
CD8, RMab	EP334
CD10	56C6
CD10, RMab	EP195
bcl6	BSB-26



CD15



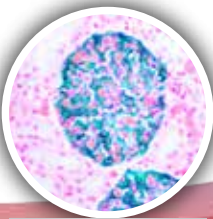
CD5, RMab

Lymphoma Antibodies

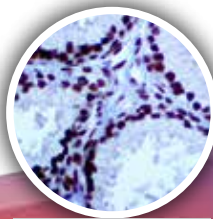
CD14	7
CD14, RMab	EP128
CD15	MMA
CD15, RMab	EP272
CD16, RMab	EP364
CD19	BSB-97
CD19, RMab	EP169
CD20	L26

Lymphoma Antibodies

CD21, RMab	EP64
CD23	1B12
CD23 RMab	EP75
CD25	4C9
CD25, RMab	RBT-CD25
CD30	Ber-H2
CD35	RLB25
CD35, RMab	EP197
CD38	SPC32
CD38, RMab	EP135
CD43	MT1
CD45	2B11 & PD7/26
CD45R	MB1
CD45RO	UCHL-1
CD56	123C3.D5
CD57	BSB-10
CD74	LN2
CD75	LN1
CD79a	JCB117
CD99	BSB-9
CD103/ITGAE, RMab	EP206
CD123, IL-3Ra	BSB-59
CD138	B-A38
CD138, RMab	EP201
CTLA-4/CD152	BSB-88
Cyclin D1, RMab	RBT14
Cyclin D1, RMab	EP12
E2F4, RMab	EP252
Epstein Barr Virus, LMP-1	CS1-4
Follicular Dendritic Cell	CNA.42
Fascin	BSB-36
FOXO1, RMab	EP290
FOXP1, RMab	EP137
FOXP3	Polyclonal
FOXP3, RMab	EP340
Granzyme B	Polyclonal

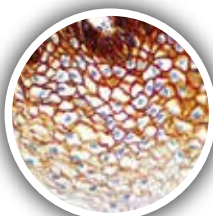


CD35

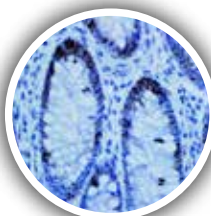


E2F4, RMab

Lymphoma Antibodies	
Granzyme B, RMab	EP230
HGAL/GCET2, RMab	EP316
HHV-8	13B10
Histone H3 Phospho	Polyclonal
Histone H3 Phospho, RMab	EP233
IgA	BSB-39
IgD	Polyclonal
IgD, RMab	EP173
IgG	BSB-40
IgM	BSB-41
Kappa Light Chains	BSB-58
Ki-67, RMab	EP5
Histone H3 Phospho	Polyclonal
Histone H3 Phospho, RMab	EP233
Ki-67, RMab	EP5
LAG-3, RMab	EP294
Lambda	BSB-16
LEF-1, RMab	EP310
MUM1, RMab	EP190
OCT-2, RMab	EP115
PAX-5, RMab	RBT-PAX5
PD-1 (CD279)	NAT-105
PD-1/CD279, RMab	EP239
PD-L1/CD274, RMab	RBT-PDL1
PU.1, RMab	EP18
SOX-11	CL0142
T-bet/TBX-21, RMab	EP263
TCL1, RMab	EP105
TCR Beta F1	8A3
TdT	Polyclonal
TdT, RMab	RBT-TdT
TdT, RMab	EP266
TIA-1	TIA-1
TRAcP	9C5
ZAP-70	2F3.2



EGFR Phospho, RMab

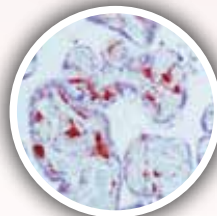


Histone H3 Phospho

Melanoma & Skin Cancer Antibodies	
Adipophilin/ADRP	BSB-91
B7H3/CD276, RMab	RBT-B7H3
BAPI	BSB-109
BRAF V600E	RM8
CD4, RMab	RBT-CD4
CD8	C8/144B
CD8, RMab	EP334
CD25	4C9
CD25, RMab	RBT-CD25
CD41, RMab	EP178
CD44	BSB-12
CD63	NKi/C3
CD163	10D6
CD163, RMab	EP324
Cytokeratin 5 & 6	D5/16 B4
Cytokeratin 5 & 6, RMab	EP24 & EP67
Cytokeratin 10, RMab	EP97



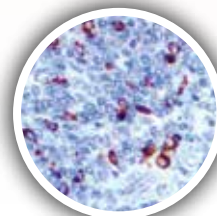
Cytokeratin LMW/ AE1



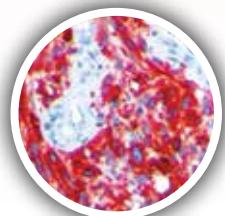
Factor XIIa, RMab

Melanoma & Skin Cancer Antibodies	
Cytokeratin 7	OV-TL12/30
Cytokeratin 7, RMab	EP16
Cytokeratin 13, RMab	EP69
Cytokeratin 14	LL002
Cytokeratin 14, RMab	EP61
Cytokeratin 15, RMab	EP14
Cytokeratin 16, RMab	EP297
Cytokeratin HMW/34BE12	34BetaE12
Cytokeratin Cocktail, AE1 & AE3	AE1/AE3
Cytokeratin LMW/AE1	AE1
Cytokeratin HMW/AE3	AE3
Cytokeratin OSCAR	OSCAR
Desmin	D33
Desmin, RMab	EP15

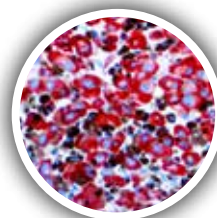
Melanoma & Skin Cancer Antibodies	
Desmoglein-3	BSB-61
Desmoglein-3, RMab	EP306
EpCAM/Epithelial Specific Antigen	Ber-EP4
Factor XIIa, RMab	EP292
Glypican-3	1G12
Granzyme B	Polyclonal
Granzyme B, RMab	EP230
Histone H3 Phospho	Polyclonal
Histone H3 Phospho, RMab	EP233
IMP-3/1GF2BP3, RMab	EP286
Ki-67, RMab	EP5
MART-1/Melan-A, M2-7C10	M2-7C10
MART-1/Melan-A, A103	A103
Melanoma/KBA.62	KBA6.2
Melanoma/PNL2	PNL2
Melanoma Cocktail	HMB-45, A103 & BSB-6
Melanosome HMB-45	HMB-45
MiTf	C5/D5
MLH1	G168-728
MSH2	G219-1129
MSH2, RMab	RBT-MSH2
MSH6	44
MSH6, RMab	EP49
Nestin, RMab	EP287



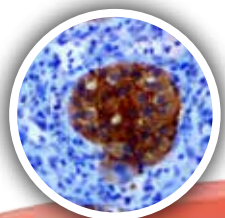
Granzyme B, Rmab



MART-1/Melan-A, A-103



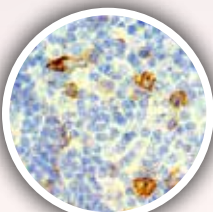
Melanoma



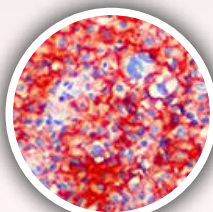
NRAS, RMab

Melanoma & Skin Cancer Antibodies

NGFR	BSB-18
NRAS (Q61R), RMab	RBT-NRAS
OX40/CD134	BSB-90
p40, RMab	ZR8
p63, RMab	EP174
PD-L1/CD274, RMab	RBT-PD-L1
PMS2, RMab	EP51
S-100	4C4.9
S100Beta, RMab	EP32
SOX-10	BSB-62
SOX-10, RMab	EP268
TIA-1	TIA-1
Tyrosinase	BSB-6 (Ty/G5)
Vimentin	V9
Vimentin, RMab	EP21



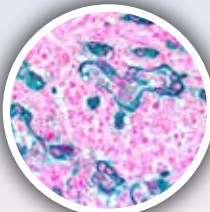
OX40/CD134



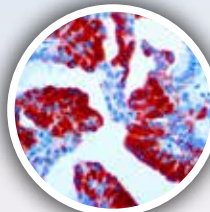
PD-L1, RMab

Mesothelioma Antibodies

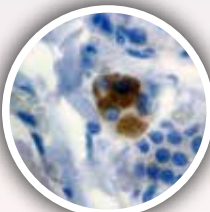
Podoplanin/D2-40	D2-40
TAG-72	BSB-21
Thrombomodulin/CD141, RMab	EP175
TTF-1	8G7G3/1
WT1	6F-H2



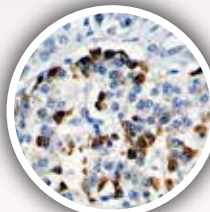
EpCAM/ESA



TAG-72



Calcitonin



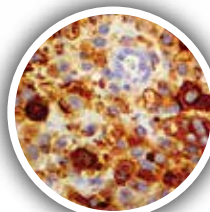
Glucagon

Neural & Neuroendocrine Cancer Antibodies

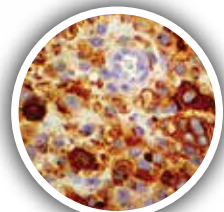
ACTH	BSB-25
Alpha Synuclein	BSB-114
Amyloid Beta, RMab	RBT-A4
ATRAX	BSB-108
Brachury	Polyclonal
C-Met/HGFR	EP1454Y
Calcitonin	Polyclonal
Calcitonin, RMab	EP92
CD56	123C3.D5
CD57	BSB-10
Chromogranin A	LK2H10
Cytokeratin 18, RMab	EP30
FSH	BSB-55
Gastrin	Polyclonal
GFAP	G-A-5
GFAP, RMab	EP13
GH	Polyclonal
GH	BSB-99
GH, RMab	EP267
Glucagon	Polyclonal
Glucagon	BSB-111

Neural & Neuroendocrine Cancer Antibodies

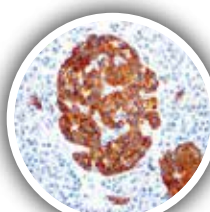
Glucagon, RMab	EP74
Histone H3 Phospho	Polyclonal
Histone H3 Phospho, RMab	EP233
INI-1	25
Insulin	BSB-42
Insulin, RMab	EP125
LEF-1, RMab	EP310
LH	BSB-53
Myelin Basic Protein	Polyclonal
Myelin Basic Protein, RMab	EP207
Neuroblastoma	NB84a
NeuN	A60
Neurofilament	2F11
Neurofilament, RMab	EP79
NSE	BSB-94
OLIG2, RMab	EP112
Prolactin	PRL02
Prolactin, RMab	EP193
PTEN	6H2.1
PTEN, RMab	RBT-PTEN
Somatostatin	Polyclonal
Somatostatin	BSB-113
Somatostatin, RMab	EP130
Synaptophysin	Polyclonal
Synaptophysin, RMab	EP158
Tau	BSB-115
TSH	BSB-56
TSH, RMab	EP254



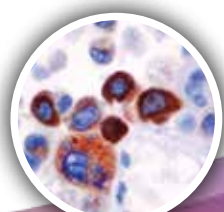
Neuroblastoma



Neuroblastoma



Synaptophysin, RMab

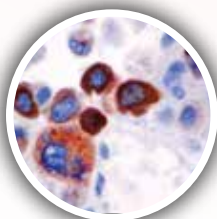


Prolactin

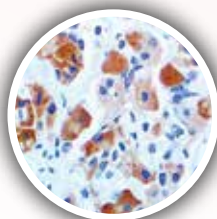
Mesothelioma Antibodies

BG8 Lewis Y	F3
Calretinin, RMab	EP1798
Caveolin 1, RMab	EP353
CEA	BSB-13
CEA	Polyclonal
Cytokeratin 5, RMab	EP24
Cytokeratin 5 & 6	D5/16 B4
Cytokeratin 5 & 6, RMab	EP24 & EP67
Cytokeratin 7	OV-TL 12/30
Cytokeratin 7, RMab	EP16
E-Cadherin, RMab	EP6
EpCAM/Epithelial Specific Antigen	Ber-EP4
EpCAM/Epithelial Specific Antigen	MOC-31
GLUT1, RMab	EP141
Mesothelial	HBME-1
Mesothelin, RMab	EP140

Ovarian Cancer Antibodies	
ALDH1A, RMab	EP168
Bax, RMab	E63
CA-125	OC125
CA-125, RMab	EP48
Cadherin 17/LI-Cadherin, RMab	EP86
Calretinin, RMab	EP1798
CD30	Ber-H2
CD99	BSB-9 (CD99/B5)
CD103/ITGAE, RMab	EP206
CDX2, RMab	EP25
CEA	BSB-13 (CEA31)
CEA	Polyclonal
Cytokeratin 7	OV-TL 12/30
Cytokeratin 7, RMab	EP16
Cytokeratin 17	BSB-33
Cytokeratin 17, RMab	EP98
Cytokeratin 20	Ks20.8
Cytokeratin 20, RMab	EP23
Cytokeratin 35BH11	35betaH11



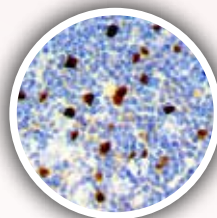
Prolactin, RMab



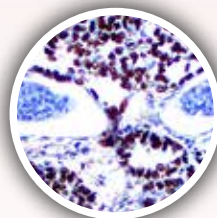
TSH

Ovarian Cancer Antibodies	
EMA	E29
ERCC1, RMab	EP219
FOXP1, RMab	EP137
FOXP3	Polyclonal
FOXP3, RMab	EP340
Glypican-3	1G12
hCG	BSB-38
HE4, RMab	EP370
hPL	Polyclonal
hPL, RMab	EP241
HLA-DR Alpha, RMab	EP96
Inhibin, Alpha	R1
Inhibin Alpha, RMab	EP378

Ovarian Cancer Antibodies	
Ki-67, RMab	EP5
MUC4	8G7
MUC4, RMab	EP256
OCT-4, RMab	EP143
PAX-2, RMab	EP235
PAX-6, RMab	EP341
PAX-8, RMab	EP298
PAX-8, RMab	ZR-1
PD-L1/CD274, RMab	RBT-PDL1
PLAP	BSB-47
PLAP, RMab	EP194
SALL4	6E3
SALL4, RMab	EP299
SOX-9, RMab	EP317
Stathmin, RMab	EP247
Survivin, RMab	EP119
WT1	6F-H2

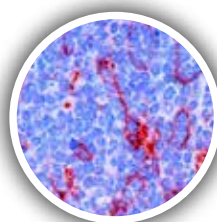


SOX-9, RMab

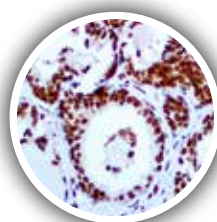


SALL4, RMab

Pituitary Antibodies	
ACTH	BSB-25
FSH	BSB-55
GH	Polyclonal
GH	BSB-99
GH, RMab	EP267
LH	BSB-53
Prolactin	PRL02
Prolactin, RMab	EP193
TSH	BSB-56
TSH, RMab	EP254

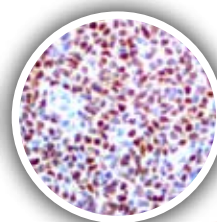


B7-H3, RMab

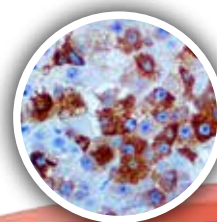


p40, RMab

Prostate Cancer Antibodies	
ALDH1A1, RMab	EP168
Androgen Receptor	BSB-4 (AR-D12)
AMACRacemase, RMab	13H4
B7H3/CD276, RMab	RBT B7H3
bcl-2	BSB-5
bcl-2, RMab	EP36
c-Myc	9E10
c-Myc, RMab	EP121
CD6	BSB-54
CD105/Endoglin	Polyclonal
CD105, RMab	EP274
Cyclin D1, Rmab	RBT14
Cyclin D1, RMab	EP 12
Cytokeratin 5, RMab	EP24
Cytokeratin 5&6	D5/16B4
Cytokeratin 5&6, RMab	EP24/EP67
Cytokeratin 5&ERG, RMab	EP24/EP111
Cytokeratin 5&6&ERG, RMab	EP24/EP67/EP111
Cytokeratin 5&14, RMab	EP24/EP61
Cytokeratin HMW/34BE12	34BetaE12
ERG, RMab	EP111
FOXA1/HNF-3A	Polyclonal
FOXA1/HNF-3A, RMab	EP277
FOXO1, RMab	EP290
FOXP3	Polyclonal
FOXP3, RMab	EP340
HSP-27	G3.1
Maspin	BSB-92
NKX3.1, RMab	EP356
Osteonectin/SPARC	BSB-93
p40, RMab	ZR8
p63, RMab	EP174

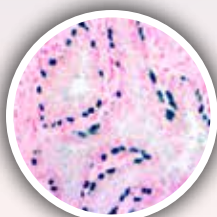


Cyclin D1

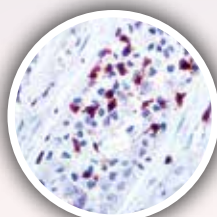


iNOS, RMab

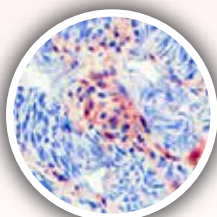
Prostate Cancer Antibodies	
PDX, RMAb	EP139
Prostein/P501S, RMAb	ZR-9
PSA	BSB-7
PSA, RMAb	RBT-PSA
PSAP	PASE/4LJ
PSAP, RMAb	EP53
PSMA, RMAb	EP192
PSP94/MSMB, RMAb	EP203
PTEN	6H2.1
PTEN, RMAb	RBT-PTEN
S100P, RMAb	EP186
SOX-9, RMAb	EP317
Survivin, RMAb	EP119



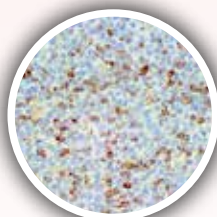
p63, RMAb



S100 A9, RMAb



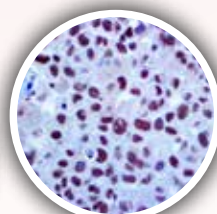
PTEN



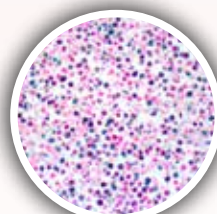
CTLA-4

Rejection & Autoimmunity Antibodies	
Amyloid A, RMAb	EP335
C3d	Polyclonal
C4d	Polyclonal
C4d, RMAb	EP273
CD19	BSB-97
CD19, RMAb	EP169
CD20	L26
CD31	1A10
CD38	SPC32
CD38, RMAb	EP135
CD138	B-A38
CD138, RMAb	EP201
CTLA-4/CD152	BSB-88
Cytokeratin 6, RMAb	EP67

Rejection & Autoimmunity Antibodies	
Cytokeratin 16, RMAb	EP297
Desmoglein-3	BSB-61
Desmoglein-3, RMAb	EP306
Granzyme B	Polyclonal
Granzyme B, RMAb	EP230
IgA	BSB-39
IgD	Polyclonal
IgD, RMAb	EP173
IgG	BSB-40
IgM	BSB-41
iNOS, RMAb	RBT-iNOS
Kappa Light Chains	BSB-58 (KAP-56)
LAG-3, RMAb	EP294
Lambda	BSB-16 (Lamb14)
OX40/CD134	BSB-90
Perforin	5B10
S100A9, RMAb	EP185



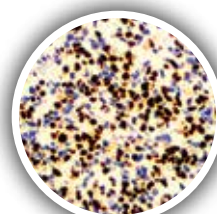
Fli-1



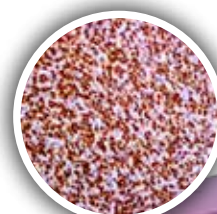
HHV-8

Sarcoma & Soft Tissue Antibodies	
Actin, Muscle Specific	HHF35
Actin, Smooth Muscle	BSB-15
ALDH1A1, RMAb	EP168
CA 15-3	DF3
Caldesmon	BSB-19
Calponin	BSB-20
CD13	38C12
CD13, RMAb	EP117
CD14	7
CD14, RMAb	EP128
CD33, RMAb	RBT-CD33
CD34	QBEnd/10
CD34, RMAb	EP88
CD35	RLB25
CD35, RMAb	EP197

Sarcoma & Soft Tissue Antibodies	
CD99	BSB-9
CD117, RMAb	EP10
CD163	10D6
CD163, RMAb	EP324
CDK4, RMAb	EP180
Cytokeratin 5 & ERG, RMAb	EP24 & EP111
Cytokeratin Cocktail, AE1 & AE3	AE1/AE3
Cytokeratin OSCAR	OSCAR
Desmin	D33
Desmin, RMAb	EP15
DOG-1, RMAb	EP332
DOG-1, RMAb	RBT-DOG1
Factor VIII - Related Antigen	Polyclonal
Fli-1	G146-222
FOXO1, RMAb	EP290
HHV-8	13B10
Histone H3 Phospho	Polyclonal
Histone H3 Phospho, RMAb	EP233
Langerin, RMAb	EP349
MDM2	BSB-64
Melanoma/PNL2	PNL2
MUC4	8G7
MUC4, RMAb	EP256
MyoD1, RMAb	EP212
Myogenin	F5D
Myogenin, RMAb	EP162
Myoglobin	Polyclonal
Myoglobin	BSB-104
Myoglobin, RMAb	EP87
NKX2.2, RMAb	EP336
PDGFR-B, RMAb	RBT-PDGFRB
Podoplanin/D2-40	D2-40
STAT6	Polyclonal



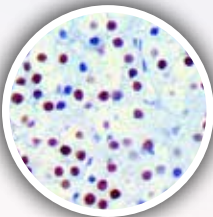
Myogenin, RMAb



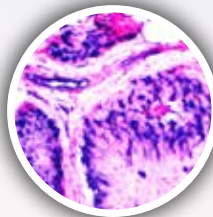
TLE-1

Sarcoma & Soft Tissue Antibodies

STAT6, RMab	EP325
Synaptophysin	Polyclonal
Synaptophysin, RMab	EP158
TFE3, RMab	EP285
TLE-1	1F5
Vimentin	V9
Vimentin, RMab	EP21
WT1	6F-H2



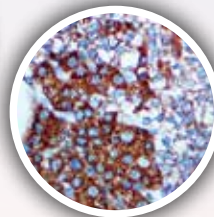
TFE, RMab



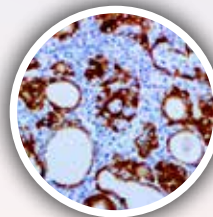
Vimentin

Thyroid & Parathyroid Antibodies

PAX-8, RMab	EP298
S100A6, RMab	EP313
Synaptophysin	Polyclonal
Synaptophysin, RMab	EP158
Thyroglobulin	BSB-49
Thyroglobulin	2H11/6E1
Thyroglobulin, RMab	EP250
Thyroid Peroxidase, RMab	EP159
TTF-1	8G7G3/1



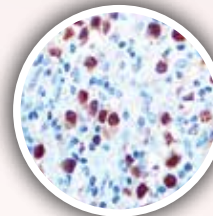
PTH



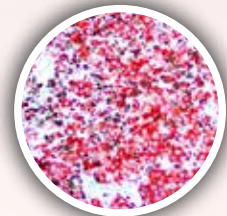
Thyroid Peroxidase. RMab

Undifferentiated Tumor Antibodies

Galectin-3	9C4
hCG	BSB-38
Melanoma/PNL2	PNL2
Myogenin	F5D
Myogenin, RMab	EP162
OCT-4, RMab	EP143
p57	Kp10
PLAP	BSB-47
PLAP, RMab	EP194
S-100	4C4.9
SOX-2, RMab	EP103
SALL4	6E3
SALL4, RMab	EP299
Synaptophysin	Polyclonal
Synaptophysin, RMab	EP158
Vimentin	V9
Vimentin, RMab	EP21



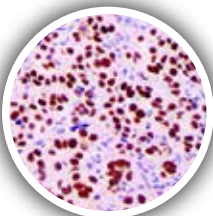
OCT-4, RMab



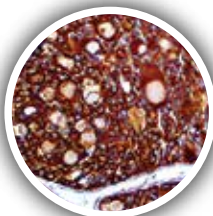
S-100

Thyroid & Parathyroid Antibodies

BRAF V600E, RMab	RM8
Cadherin-6, RMab	EP217
Calcitonin	Polyclonal
Calcitonin, RMab	EP92
CD117, RMab	EP10
Cytokeratin 19	BSB-34
Cytokeratin 19, RMab	EP72
Galectin-3	9C4
IgG4	BSB-96
IgG4, RMab	EP138
p63, RMab	EP174
Parafibromin	BSB-50
Parathyroid Hormone/PTH	BSB-24
PAX-8, RMab	ZR-1



PAX-8, RMab



Thyroglobulin, RMab

Undifferentiated Tumor Antibodies

Actin, Muscle Specific	HHF-35
Alpha-Fetoprotein	BSB-23
Alpha-Fetoprotein, RMab	EP209
CD34	QBEnd/10
CD34, RMab	EP88
CD45	2B11 & PD7/26
CD56	123C3.D5
CD99	BSB-9
CD117, RMab	EP10
Cytokeratin Cocktail, AE1&AE3	AE1/AE3
Cytokeratin LMW/AE1	AE1
Cytokeratin HMW/AE3	AE3
Cytokeratin OSCAR	OSCAR
Desmin	D33
Desmin, RMab	EP15

Bio SB performs R&D, production, distribution and marketing of unique products for IHC, ICC, FISH, CISH, Liquid-Based Cytology (LBC) and PCR technologies that meet the highest international standards for applications in Molecular Pathology, Cancer Research, Microbiology, Immunology and Genetics. BIO SB manufactures and develops products in accordance with FDA QSR 21 CFR Part 820 cGMP and ISO 13485:2003 standards. These guidelines enable us to produce an IVD product that meets the highest in vitro diagnostic standards.

Bio SB Inc.

69 Santa Felicia Drive, Santa Barbara, CA 93117, USA

Tel (USA): 1-800-561-1145 | Tel (Int): +1-805-692-2768 | Fax: 805-6922769

E-mail: info@biosb.com | Website: www.biosb.com