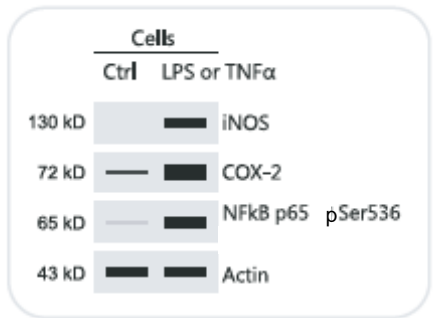


Cell

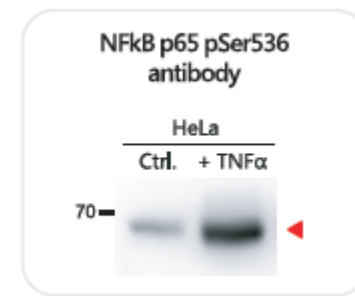
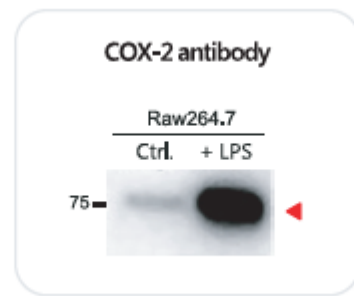
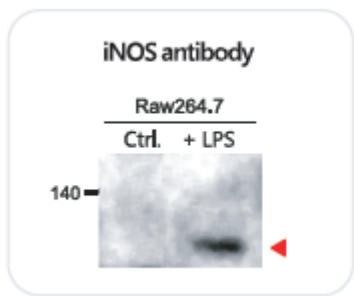
Inflammation Antibody Panel (ARG30323)

Ideal for studying inflammation in cultured cells

- Includes key **inflammation marker** iNOS and COX-2 antibodies
- Includes **NFkB activation marker** in response to both LPS- and TNF α -induced inflammation
- Includes the most suitable **loading control**
- Includes secondary antibody



Component	Reactivity	Application	Package
iNOS antibody	Hu, Ms, Rat, Mamm	ICC/IF, IHC-P, IP, WB	50 μ l
COX-2 antibody	Hu, Ms, Rat, Gpig, Mk, Rb, Sh	ICC/IF, IHC, WB	50 μ l
NFkB p65 pSer536 antibody	Hu, Ms, Rat	ICC/IF, IHC-P, WB	20 μ l
β -Actin antibody	Hu, Ms, Rat, Rb, Sh	IHC-P, WB	20 μ l
anti-Rabbit IgG antibody (HRP)	Rb	ELISA, IHC-P, WB	50 μ l

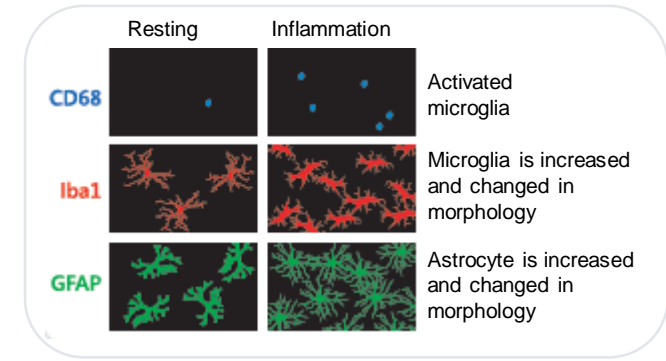


Brain

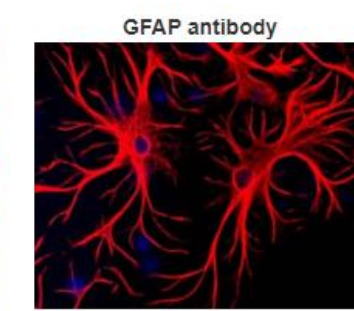
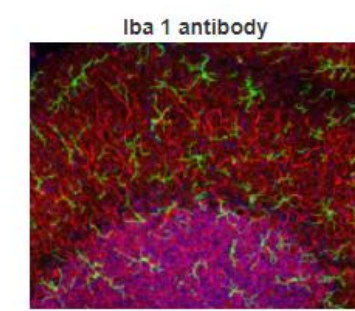
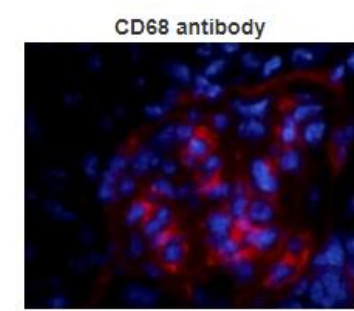
Neuroinflammation Antibody Panel (ARG30324)

Ideal for studying neuroinflammation

- Ideal for **triple staining** samples from human, mouse and rat
- Includes **active microglial marker** CD68 antibody
- Includes **general microglial marker** Iba1 antibody
- Includes **astrocyte marker** GFAP antibody



Component	Reactivity	Application	Host	Package
CD68 antibody [KP1]	Hu, Ms, Rat, Rb	FACS, ICC/IF, IHC-Fr, IHC-P, WB	Mouse	20 μ g
Iba 1 antibody	Hu, Ms, Rat	ICC/IF, IHC-Fr, WB	Rabbit	20 μ l
GFAP antibody	Hu, Ms, Rat, Bv, Cat, Ck, Mk, Rb	ELISA, FACS, ICC/IF, IHC-Fr, IHC-P, WB	Chicken	20 μ l



Tissue

Inflammatory Cell Antibody Panel (ARG30325)

Ideal for labeling inflammatory cells in tumors or tissues

Marker	Component	Reactivity	Application	Package
Neutrophil	MPO antibody	Hu, Ms, Rat	IHC-P, WB	20 μ l
Macrophage	CD68 antibody [SQab1742]	Hu	FACS, IHC-P	20 μ l
T cell	CD3 antibody [SQab1713]	Hu	FACS, ICC/IF, IHC-P, IP, WB	20 μ l
B cell	CD20 antibody [SQab1719]	Hu	FACS, ICC/IF, IHC-P, IP	20 μ l
	anti-Rabbit IgG antibody (HRP)	Rb	WB, IHC-P, ELISA	50 μ l

- Ideal for pathological staining in tissues
- Includes **early inflammatory cell** markers
- Includes **late inflammatory cell** markers