



Flow Cytometry Antibodies



**13 Colourful
Fluorophores!**

Choose from over 3,500 Flow Cytometry Validated Antibodies!
Anti-Human | Anti-Mouse | Anti-Rat | Anti-NHP
13 Fluorophores | 20 - 200 Test Packs & 25ug - 1mg Packs

MISSION & BRAND PROMISE

THE MISSION

Our mission is to make scientists smile through innovative products, remarkable interactions with our team and our little Genies!



COLM RYAN PhD
CEO & co-founder of
Assay Genie



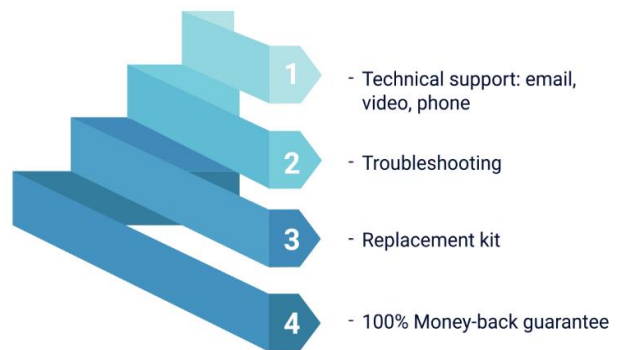
**SEÁN MAC FHEARRAIGH
PhD** CTO & co-founder of
Assay Genie

Maximum Support & Guarantee

Assay Genie provides excellence in support to all our customers!

Not only do we provide you with application based support before, during and after your experiments, but on those rare occasions when problems arise, we have a defined series of customer-centric steps to ensure that you are happy with our products.

So, don't worry, we also offer a 100% money-back guarantee should our products not perform as specified .



Rapid Global Delivery

Whether you are served by one of our trusted local distributors or are part of our direct sales network, we endeavour to ship your products to you on-time, every time!

Contact us 24/7 on www.info@assaygenie.com to find our shipping times to your laboratory.



Flow Cytometry Antibodies

Unlock the potential of your research with Assay Genie's superior range of Flow Cytometry antibodies. Designed for efficiency and accuracy, our products are the ideal choice for reliable and high-quality research. Discover the unique features that set our antibodies apart:

Diverse Fluorophore Selection: Offering 13 different fluorophores, our products allow for diverse panel design.

Extensive Target Range: Choose from over 3,5000 intracellular and extracellular protein targets.

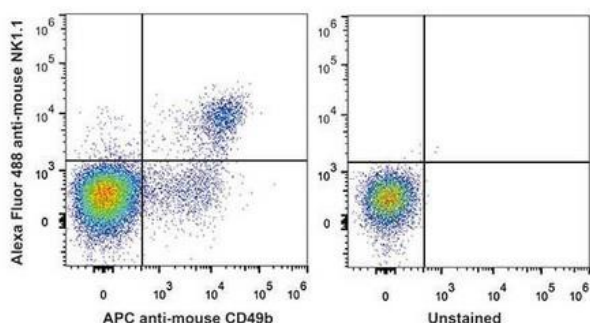
Validated Labelling and Affinity: Each antibody is rigorously tested to ensure optimal labelling & strong affinity.

Premium Monoclonal Antibodies: Our FC validated antibodies are of the highest quality, ensuring precision and consistency in your experiments.

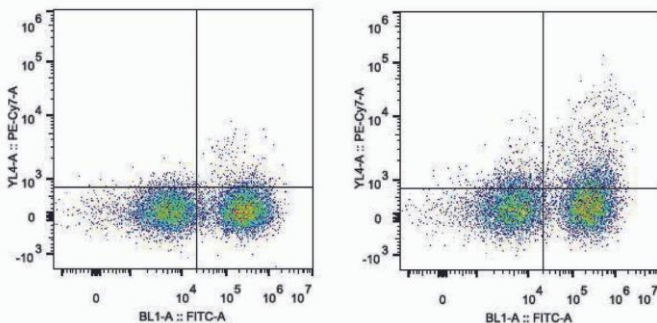
Cutting-Edge Labelling Technology: Employing advanced technology, our antibodies facilitate the efficient identification of immune cells and accurate assessment of cell activation status.

Customized for Your Research: Explore our collection to find the perfect match for your specific Flow Cytometry research requirements.

GenieFluor 488 Anti-Mouse CD161/NK1.1 Antibody [PK136]



PE/Cyanine7 Anti-Mouse CD11c Antibody [N418]



Flow Cytometry Fluorophores

Fluorophore	Brightness	Emission Color	Laser	Excitation Max (nm)	Emission Max (nm)
GenieFluor Violet 450	✓✓	Blue	405	410	450
PE	✓✓✓✓✓	Yellow	488, 561	495, 565	575
FITC	✓	Green	488	490	530
GenieFluor 488	✓✓✓	Green	488	595	520
PerCP	✓	Red	488	440, 480, 675	675
PE/Cyanine5	✓✓✓✓✓	Red	488, 561	495, 565, 655	670
PE/Cyanine5.5	✓✓✓✓	Red	488, 561	495, 565, 675	690
PE/GenieFluor 594	✓✓✓✓✓	Red	488, 561	566	610
APC	✓✓✓✓	Red	633	650	660
GenieFluor 647	✓✓✓✓	Red	633	650	670
PerCP/Cyanine5.5	✓✓✓	Far Red	488	440, 480, 675	675
GenieFluor Red 780	✓✓	Infrared	633	625	765
PE/Cyanine7	✓✓✓✓✓	Infrared	488, 561	495, 565, 755	775

Flow Cytometry Antibodies | Anti-Human

Name	Reactivity	Clone	GeniePure	Unconjugated	Biotin	FITC	PE	APC	PerCP	PE/Cy5	PE/Cy7	PE/Cy5.5	PerCP/Cy5.5	GenieFluor 488	GenieFluor 647	PE/GenieFluor 594	GenieFluor Red 780	GenieFluor Violet 450
CD1a	Anti-Human	OKT-6	✓	✓	✓	✓	✓	✓		✓	✓	✓	✓	✓	✓	✓		
CD2	Anti-Human	TS1/8				✓	✓	✓	✓	✓	✓	✓	✓	✓	✓			
CD3	Anti-Human	UCHT1	✓	✓	✓	✓	✓	✓	✓		✓		✓	✓			✓	✓
CD3e	Anti-Human	OKT-3	✓	✓	✓	✓	✓	✓	✓	✓	✓	✓	✓	✓	✓	✓	✓	✓
CD4	Anti-Human	RPA-T4	✓	✓	✓	✓	✓	✓	✓	✓	✓	✓	✓	✓	✓	✓	✓	✓
CD5	Anti-Human	UCHT2		✓	✓	✓	✓	✓	✓	✓	✓	✓	✓	✓	✓	✓		
CD7	Anti-Human	124-1D1		✓		✓	✓	✓								✓		✓
CD8a	Anti-Human	OKT-8		✓	✓	✓	✓	✓	✓	✓			✓	✓	✓		✓	✓
CD8a	Anti-Human	HIT8a		✓		✓	✓							✓				
CD9	Anti-Human	HI9a		✓	✓	✓	✓	✓		✓	✓	✓						✓
CD10	Anti-Human	CB-CALLA		✓	✓	✓	✓	✓		✓	✓			✓	✓			
CD10	Anti-Human	HI10a		✓		✓	✓	✓		✓	✓			✓	✓			
CD11a	Anti-Human	TS1/22.1.1.13		✓	✓	✓	✓	✓						✓	✓			
CD11a	Anti-Human	R7-1	✓	✓		✓	✓	✓		✓				✓	✓	✓		
CD11b	Anti-Mouse/Human	M1/70	✓	✓	✓	✓	✓	✓	✓	✓	✓	✓	✓	✓	✓	✓	✓	✓
CD11b	Anti-Human	ICRF44				✓	✓	✓	✓	✓	✓	✓	✓	✓	✓		✓	
CD11c	Anti-Human	BU15				✓	✓	✓	✓		✓	✓	✓	✓	✓	✓		
CD13	Anti-Human	B-F10				✓	✓	✓			✓		✓	✓		✓		
CD14	Anti-Human	M5E2				✓	✓	✓		✓	✓	✓	✓	✓		✓	✓	✓
CD15	Anti-Human	HI98		✓	✓	✓	✓	✓	✓	✓	✓	✓	✓	✓				✓
CD15	Anti-Human	W6D3				✓	✓	✓		✓	✓	✓	✓	✓	✓			
CD16	Anti-Human	3G8		✓		✓	✓	✓	✓		✓	✓	✓	✓	✓	✓	✓	
CD18	Anti-Human	TS1/18.1.2.11		✓	✓	✓	✓	✓		✓	✓	✓	✓	✓	✓	✓		✓
CD19	Anti-Human	CB19			✓	✓	✓	✓			✓			✓		✓		✓
CD19	Anti-Human	HI19a		✓		✓	✓	✓		✓	✓				✓	✓		✓
CD20	Anti-Human	BCA/B20				✓	✓	✓	✓				✓	✓	✓	✓	✓	✓
CD20	Anti-Human	2H7	✓	✓		✓	✓	✓		✓	✓	✓	✓	✓	✓			✓
CD20/PD-1	Anti-Human	J110	✓	✓														
CD21	Anti-Human	BU32		✓	✓	✓	✓	✓		✓	✓		✓	✓	✓			
CD22	Anti-Human	BU59				✓	✓	✓		✓			✓	✓		✓		✓
CD22	Anti-Human	HIB22		✓		✓	✓	✓										
CD24	Anti-Human	ML5				✓	✓	✓		✓	✓	✓	✓	✓				
CD25	Anti-Human	BC96				✓	✓	✓		✓	✓	✓	✓	✓	✓	✓		
CD27	Anti-Human	O323				✓	✓	✓		✓	✓	✓	✓	✓	✓		✓	
CD28	Anti-Human	CD28.2	✓	✓		✓	✓	✓		✓	✓		✓	✓	✓	✓		
CD29	Anti-Human	TS2/16.2.1		✓	✓	✓	✓	✓	✓	✓	✓	✓	✓	✓	✓	✓		
CD31	Anti-Human	158-2B3				✓	✓	✓		✓			✓	✓	✓			
CD32	Anti-Human	IV-3		✓	✓	✓	✓	✓		✓	✓	✓		✓	✓	✓		✓
CD326	Anti-Human	9C4				✓	✓	✓		✓	✓							✓
CD33	Anti-Human	6C5				✓	✓	✓			✓	✓		✓				✓
CD34	Anti-Human	581				✓	✓	✓					✓			✓		
CD34	Anti-Human	4H11		✓		✓				✓				✓				
CD35	Anti-Human	E11		✓	✓	✓	✓			✓	✓			✓	✓	✓		
CD36	Anti-Human	5-271				✓	✓							✓				

Flow Cytometry Antibodies

Name	Reactivity	Clone	GeniePure	Unconjugated	Biotin	FITC	PE	APC	PerCP	PE/Cy5	PE/Cy7	PE/Cy5.5	PerCP/Cy5.5	GenieFluor 488	GenieFluor 647	PE/GenieFluor 594	GenieFluor Red 780	GenieFluor Violet 450
CD37	Anti-Human	IPO-24				✓	✓						✓	✓	✓	✓		
CD38	Anti-Human	HIT2		✓	✓	✓	✓	✓	✓	✓	✓	✓	✓	✓	✓	✓		✓
CD39	Anti-Human	A1				✓	✓	✓		✓	✓	✓		✓	✓			✓
CD40	Anti-Human	G28.5	✓	✓	✓	✓	✓	✓		✓	✓	✓	✓	✓	✓		✓	✓
CD41	Anti-Human	HIP8		✓	✓	✓	✓	✓		✓	✓	✓	✓	✓	✓			✓
CD44	Anti-Human	P2A1				✓	✓	✓			✓		✓	✓	✓			
CD44	Anti-Human/Mouse	IM7	✓	✓	✓	✓	✓	✓		✓	✓	✓	✓	✓	✓		✓	✓
CD44	Anti-Human	Heremes-1	✓	✓		✓	✓	✓		✓	✓		✓	✓	✓			✓
CD45	Anti-Human	HI30		✓		✓	✓	✓	✓	✓	✓	✓	✓	✓	✓	✓	✓	✓
CD45RA	Anti-Human	HI100		✓	✓	✓	✓	✓	✓	✓	✓	✓	✓	✓	✓	✓		✓
CD45RO	Anti-Human	UCHL1		✓		✓	✓	✓	✓	✓	✓	✓	✓	✓	✓	✓		✓
CD47	Anti-Human/Ms/Rat	MIAP410	✓	✓	✓	✓	✓	✓	✓	✓	✓	✓	✓	✓				✓
CD47	Anti-Human	CC2C6D4		✓	✓	✓	✓	✓	✓	✓	✓	✓	✓	✓	✓	✓		
CD48	Anti-Human	156-4H9				✓	✓	✓		✓		✓				✓		✓
CD49d	Anti-Human	BU49				✓									✓			
CD49d	Anti-Human	9F10				✓	✓	✓		✓	✓	✓	✓	✓	✓	✓		
CD49d	Anti-Human	HP1/2				✓	✓				✓		✓					
CD54	Anti-Human	15.2				✓	✓	✓			✓		✓			✓		
CD56	Anti-Human	5.1H11				✓	✓	✓									✓	✓
CD56	Anti-Human	MY31				✓												
CD56	Anti-Human	B-A19		✓		✓	✓	✓			✓	✓			✓			
CD57	Anti-Human	HNK-1		✓	✓	✓	✓	✓		✓	✓	✓	✓	✓	✓			✓
CD58	Anti-Human	TS2/9/1		✓	✓		✓	✓		✓	✓			✓		✓		
CD61	Anti-Human	VI-PL2				✓	✓	✓				✓				✓		
CD62L	Anti-Human	DREG56		✓	✓	✓	✓	✓		✓	✓		✓	✓	✓	✓	✓	✓
CD62L	Anti-Human	HI62L				✓	✓	✓		✓								
CD64	Anti-Human	10.1		✓	✓	✓	✓	✓		✓	✓	✓	✓	✓	✓		✓	✓
CD66b	Anti-Human	G10F5				✓	✓	✓			✓						✓	✓
CD68	Anti-Human	Y1/82A																
CD69	Anti-Human	FN50				✓	✓	✓		✓	✓	✓	✓	✓	✓			✓
CD73	Anti-Human	AD2				✓	✓	✓		✓	✓	✓		✓	✓		✓	
CD74	Anti-Human	LN2		✓		✓	✓	✓								✓		✓
CD80	Anti-Human	2D10					✓	✓			✓							
CD81	Anti-Human	1.3.3.22				✓	✓	✓						✓		✓		
CD83	Anti-Human	HB15e					✓	✓			✓			✓		✓		
CD86	Anti-Human	BU63		✓	✓	✓	✓	✓		✓	✓	✓	✓	✓	✓	✓	✓	
CD90	Anti-Human	5E10				✓	✓	✓		✓	✓	✓	✓		✓	✓		
CD95	Anti-Human	DX2				✓	✓	✓		✓	✓			✓	✓			
CD105	Anti-Human	SN6					✓	✓							✓			✓
CD107a/LAMP-1	Anti-Human	H4A3				✓	✓	✓					✓	✓		✓		
CD117	Anti-Human	104D2				✓	✓	✓			✓							
CD122/IL-2RB	Anti-Human	TU27				✓	✓	✓										
CD123	Anti-Human	6H6			✓		✓			✓			✓	✓	✓			
CD127/IL-7RA	Anti-Human	A019D5			✓	✓	✓	✓		✓	✓	✓	✓	✓	✓		✓	✓
CD133	Anti-Human	W6B3C1					✓	✓										

Flow Cytometry Antibodies | Anti-Human & Anti-Rat

Name	Reactivity	Clone	GeniePure	Unconjugated	Biotin	FITC	PE	APC	PerCP	PE/Cy5	PE/Cy7	PE/Cy5.5	PerCP/Cy5.5	GenieFluor 488	GenieFluor 647	PE/GenieFluor 594	GenieFluor Red 780	GenieFluor Violet 450
CD134	Anti-Human	Ber-ACT35				✓	✓	✓									✓	
CD138	Anti-Human	DL-101						✓										
CD147	Anti-Human	HIM6		✓	✓	✓	✓	✓		✓	✓		✓	✓	✓	✓		
CD154/CD40L	Anti-Human/Monkey	5C8	✓	✓	✓													
CD161	Anti-Human	HP-3G10				✓	✓	✓		✓	✓	✓	✓	✓	✓			
CD183/CXCR3	Anti-Human	G025H7				✓	✓	✓			✓							
CD184/CXC4	Anti-Human	12G5					✓	✓										
CD196/CCR6	Anti-Human	CCR6				✓	✓	✓				✓						
CD196/CCR6	Anti-Human	G034E3				✓	✓	✓				✓			✓			✓
CD197/CCR7	Anti-Human	G043H7				✓	✓	✓		✓	✓	✓	✓	✓	✓		✓	✓
CD200	Anti-Human	OX-104					✓	✓			✓							
CD206	Anti-Human	15_2						✓										
CD235	Anti-Human	HIR2		✓	✓	✓	✓	✓		✓	✓			✓	✓			
CD273/PD-L2	Anti-Human	24F.10C12					✓	✓										
CD279/PD-1	Anti-Human	J116	✓	✓														
CD279/PD-1	Anti-Human	EH12.2H7				✓	✓	✓					✓					
CD303	Anti-Human	201A				✓		✓										
HLA-A,B,C	Anti-Human	W6/32	✓	✓	✓	✓	✓	✓	✓	✓	✓	✓	✓	✓	✓			✓
HLA-DR	Anti-Human	L243	✓	✓	✓	✓	✓	✓	✓	✓	✓	✓	✓				✓	✓
IFN-γ	Anti-Human	B27	✓	✓		✓	✓	✓										
IgD	Anti-Human	IA6-2				✓	✓	✓						✓				✓
IgM	Anti-Human	MHM-88				✓	✓	✓		✓	✓	✓	✓	✓	✓			✓
IL-10	Anti-Human	JES3-9D7				✓	✓	✓						✓	✓			
IL-17A	Anti-Human	BL168				✓	✓	✓		✓	✓	✓	✓	✓	✓			✓
IL-2	Anti-Human	MQ1-17H12				✓	✓	✓										
IL-21	Anti-Human	3A3-N2					✓	✓										
IL-4	Anti-Human	MP4-25D2	✓	✓		✓	✓	✓									✓	
IL-5	Human/Mouse	TRFK5	✓	✓			✓	✓										
IL-6	Anti-Human	MQ2-13A5				✓	✓	✓										
KLRG-1	Anti-Human/Mouse	2F1		✓		✓	✓	✓			✓			✓				
TCR γ/δ	Anti-Human	B1				✓												

Name	Reactivity	Clone	GeniePure	Unconjugated	Biotin	FITC	PE	APC	PerCP	PE/Cy5	PE/Cy7	PE/Cy5.5	PerCP/Cy5.5	GenieFluor 488	GenieFluor 647	PE/GenieFluor 594	GenieFluor Red 780	GenieFluor Violet 450
CD3	Anti-Rat	G4.18				✓	✓	✓					✓			✓		
CD4 (domain 1)	Anti-Rat	OX-38		✓	✓	✓	✓	✓	✓	✓	✓		✓	✓			✓	✓
CD44H	Anti-Rat	OX-49				✓	✓	✓		✓	✓		✓					
CD45	Anti-Rat	OX-1				✓	✓	✓		✓	✓		✓				✓	✓
CD47	Anti-Human/Ms/Rat	MIAP410	✓	✓	✓	✓	✓	✓	✓	✓	✓	✓	✓	✓				✓
CD8a	Anti-Rat	OX-8				✓	✓	✓			✓	✓		✓				
CD90	Anti-Rat / Mouse	OX-7			✓	✓	✓	✓			✓		✓				✓	

Flow Cytometry Antibodies | Anti-Mouse

Name	Reactivity	Clone	GeniePure	Unconjugated	Biotin	FITC	PE	APC	PerCP	PE/Cy5	PE/Cy7	PE/Cy5.5	PerCP/Cy5.5	GenieFluor 488	GenieFluor 647	PE/GenieFluor 594	GenieFluor Red 780	GenieFluor Violet 450
CD3	Anti-Mouse	17A2	✓	✓	✓	✓	✓	✓	✓	✓	✓	✓	✓	✓	✓	✓	✓	✓
CD1d	Anti-Mouse	19G11	✓	✓	✓	✓	✓	✓	✓	✓	✓	✓	✓	✓	✓	✓	✓	✓
CD3e	Anti-Mouse	145-2C11	✓	✓	✓	✓	✓	✓	✓	✓	✓	✓	✓	✓	✓	✓	✓	✓
CD4	Anti-Mouse	GK1.5	✓	✓	✓	✓	✓	✓	✓	✓	✓	✓	✓	✓	✓	✓	✓	✓
CD4	Anti-Mouse	RM4-5					✓	✓			✓		✓				✓	✓
CD5	Anti-Mouse	53-7.3			✓	✓	✓		✓	✓	✓	✓	✓	✓	✓		✓	✓
CD11a	Anti-Mouse	FD441.8	✓	✓	✓	✓	✓	✓		✓	✓	✓		✓	✓	✓		
CD11b	Anti-Mouse/Human	M1/70	✓	✓	✓	✓	✓	✓	✓	✓	✓	✓	✓	✓	✓	✓	✓	✓
CD11c	Anti-Mouse	N418			✓	✓	✓	✓	✓	✓	✓	✓	✓	✓	✓		✓	✓
CD14	Anti-Mouse	Sa14-2				✓	✓	✓		✓	✓	✓	✓	✓	✓		✓	✓
CD16/32	Anti-Mouse	2.4G2	✓	✓	✓	✓	✓	✓		✓	✓	✓	✓	✓	✓	✓	✓	✓
CD18	Anti-Mouse	M18/2	✓	✓	✓	✓	✓				✓			✓				
CD19	Anti-Mouse	1D3	✓	✓	✓	✓	✓	✓		✓	✓	✓	✓	✓	✓	✓	✓	✓
CD22	Anti-Mouse	Cy34.1	✓	✓	✓			✓		✓	✓	✓	✓	✓	✓			✓
CD23	Anti-Mouse	B3B4				✓	✓	✓			✓			✓	✓			
CD24	Anti-Mouse	M1/69				✓	✓	✓		✓	✓	✓	✓	✓	✓			
CD25	Anti-Mouse	PC-61.5.3	✓	✓	✓	✓	✓	✓		✓	✓	✓	✓	✓	✓	✓	✓	✓
CD28	Anti-Mouse	37.51	✓	✓			✓	✓						✓	✓			
CD31	Anti-Mouse	390			✓	✓	✓	✓		✓	✓	✓	✓	✓	✓			
CD34	Anti-Mouse	RAM34																
CD36	Anti-Mouse	HM36																
CD38	Anti-Mouse	NIM45	✓	✓		✓	✓	✓			✓							
CD40	Anti-Mouse	FGK4.5/FGK45	✓	✓	✓	✓	✓	✓		✓	✓	✓	✓	✓	✓	✓		
CD41	Anti-Mouse	MWReg30				✓	✓	✓			✓							
CD44	Anti-Human/Mouse	IM7	✓	✓	✓	✓	✓	✓		✓	✓	✓	✓	✓	✓		✓	✓
CD45	Anti-Mouse	30-F11				✓	✓	✓	✓	✓	✓	✓	✓	✓	✓	✓	✓	✓
CD45.1	Anti-Mouse	A20				✓	✓	✓										✓
CD45.2	Anti-Mouse	104.2	✓	✓	✓	✓	✓	✓		✓	✓	✓	✓	✓	✓			✓
CD45R/B220	Anti-Mouse	RA3.3A 1/6.1	✓	✓	✓	✓	✓	✓	✓	✓	✓	✓	✓	✓	✓	✓	✓	✓
CD47	Anti-Human/Ms/Rat	MIAP410	✓	✓	✓	✓	✓	✓	✓	✓	✓	✓	✓	✓	✓			✓
CD48	Anti-Mouse	HM48-1				✓	✓	✓	✓		✓		✓	✓	✓		✓	
CD49b	Anti-Mouse	DX5			✓	✓	✓	✓	✓	✓	✓	✓	✓	✓	✓		✓	✓
CD51	Anti-Mouse	RMV-7			✓		✓	✓			✓							
CD54	Anti-Mouse	YN/1.7.4	✓	✓	✓	✓	✓	✓		✓	✓	✓	✓	✓	✓			
CD62L	Anti-Mouse	Mel14	✓	✓	✓	✓	✓	✓		✓	✓	✓	✓	✓	✓			
CD64	Anti-Mouse	X54-5F/7.1				✓	✓	✓		✓	✓						✓	
CD69	Anti-Mouse	H1.2F3				✓	✓	✓			✓						✓	
CD71	Anti-Mouse	R17 217.1.3/TIB-219	✓	✓	✓	✓	✓	✓		✓	✓	✓	✓	✓	✓	✓		✓
CD73	Anti-Mouse	TY/23	✓	✓	✓	✓	✓	✓			✓				✓			
CD80	Anti-Mouse	16-10A1	✓	✓	✓	✓	✓	✓		✓	✓	✓				✓	✓	✓
CD86	Anti-Mouse	GL-1	✓	✓	✓	✓	✓	✓			✓	✓		✓	✓	✓	✓	
CD8a	Anti-Mouse	53-6.7	✓	✓	✓	✓	✓	✓	✓	✓	✓	✓	✓	✓	✓	✓	✓	✓
CD90	Anti-Rat / Mouse	OX-7			✓	✓	✓	✓			✓		✓				✓	
CD90	Anti-Mouse	M5/49.4.1	✓	✓	✓	✓	✓	✓			✓							
CD90.1	Anti-Mouse	1.90E+13	✓	✓														
CD90.2	Anti-Mouse	30H12	✓	✓	✓	✓	✓	✓	✓	✓	✓	✓	✓	✓	✓			✓
CD103	Anti-Mouse	M290	✓	✓	✓	✓	✓	✓		✓	✓	✓		✓	✓			
CD105	Anti-Mouse	MJ7/18				✓	✓	✓										
CD106	Anti-Mouse	M/K-2.7	✓	✓	✓	✓	✓	✓		✓	✓	✓	✓	✓	✓	✓		

Flow Cytometry Antibodies | Anti-Mouse

Name	Reactivity	Clone	GeniePure	Unconjugated	Biotin	FITC	PE	APC	PerCP	PE/Cy5	PE/Cy7	PE/Cy5.5	PerCP/Cy5.5	GenieFluor 488	GenieFluor 647	PE/GenieFluor 594	GenieFluor Red 780	GenieFluor Violet 450
CD107a	Anti-Mouse	1D4B				✓	✓	✓		✓	✓	✓	✓	✓	✓	✓		✓
CD115	Anti-Mouse	AFS98	✓	✓			✓	✓										
CD117	Anti-Mouse	2B8	✓	✓	✓	✓	✓	✓			✓			✓	✓			
CD119	Anti-Mouse	GR-20	✓	✓	✓		✓	✓										
CD120b	Anti-Mouse	TR75-54.7	✓	✓	✓													
CD122	Anti-Mouse	5H4	✓	✓	✓	✓	✓	✓		✓	✓	✓		✓	✓			
CD127	Anti-Mouse	A7R34		✓	✓	✓	✓	✓		✓	✓		✓	✓	✓			
CD132	Anti-Mouse	3 E12	✓	✓	✓													
CD150	Anti-Mouse	TC15-12F12.2				✓	✓	✓		✓	✓	✓		✓	✓			
CD162	Anti-Mouse	4RA10	✓	✓	✓	✓	✓	✓		✓	✓	✓	✓	✓	✓	✓		✓
CD183/CXCR3	Anti-Mouse	CXCR3-173	✓	✓	✓	✓	✓	✓		✓	✓	✓	✓	✓	✓			
CD200	Anti-Mouse	OX-90				✓		✓			✓							
CD206	Anti-Mouse	C068C2				✓	✓	✓			✓							
CD209b	Anti-Mouse	22D1	✓	✓	✓													
CD210	Anti-Mouse	1B1.3A	✓	✓	✓													
CD272	Anti-Mouse	PK18.6	✓	✓	✓	✓	✓	✓			✓							
CD274/PD-L1	Anti-Mouse	10F.9G2	✓	✓	✓	✓	✓	✓				✓		✓	✓			
CD274/PD-L1	Anti-Mouse	29E.2A3	✓	✓	✓	✓	✓	✓		✓	✓		✓					
CD279/PD-1	Anti-Mouse	29F.1A12	✓	✓	✓	✓	✓	✓			✓	✓	✓		✓		✓	
CD326	Anti-Mouse	G8.8				✓	✓	✓			✓			✓				
CD335	Anti-Mouse	29A1.4				✓	✓	✓		✓	✓	✓				✓		
CD366/Tim-3	Anti-Mouse	RMTM-23	✓	✓		✓	✓	✓										
FcεRIα	Anti-Mouse	Cl:A3-1	✓	✓	✓	✓	✓	✓		✓	✓	✓		✓	✓	✓	✓	✓
Foxp3	Anti-Mouse	3G3				✓	✓	✓										
H-2	Anti-Mouse	M1/42	✓	✓	✓	✓	✓	✓		✓		✓	✓	✓	✓		✓	
IFN-γ	Anti-Mouse	XMG1.2	✓	✓	✓	✓	✓	✓								✓		
IgD	Anti-Mouse	11-26c.2a			✓	✓	✓	✓	✓	✓	✓	✓	✓	✓	✓		✓	
IgM	Anti-Mouse	RMM-1			✓	✓	✓	✓		✓	✓	✓	✓	✓	✓			
IL-10	Anti-Mouse	JES5-16E3				✓	✓	✓										
IL-17A	Anti-Mouse	TC11-18H10.1			✓	✓	✓	✓							✓			
IL-17A	Anti-Mouse	17F3		✓		✓	✓	✓			✓							✓
IL-2	Anti-Mouse	JES6-5H4	✓	✓		✓	✓	✓										
IL-4	Anti-Mouse	11B11	✓	✓			✓	✓										
IL-5	Human/Mouse	TRFK5	✓	✓			✓	✓										
IL-6	Anti-Mouse	MP5-20F3	✓	✓			✓	✓										
KLRG-1	Anti-Human/Mouse	2F1		✓		✓	✓	✓			✓			✓				
Ly6A/E(Sca-1)	Anti-Mouse	D7				✓	✓	✓		✓	✓	✓	✓	✓	✓			✓
Ly6C	Anti-Mouse	Monts 1	✓	✓	✓	✓	✓	✓	✓	✓	✓	✓	✓	✓	✓		✓	✓
Ly6G	Anti-Mouse	1A8	✓	✓	✓	✓	✓	✓	✓	✓	✓	✓	✓	✓	✓			✓
Ly-6G/Ly-6C (Gr-1)	Anti-Mouse	RB6-8C5	✓	✓	✓	✓	✓	✓	✓	✓	✓	✓	✓	✓	✓		✓	✓
MHC-II	Anti-Mouse	M5/114	✓	✓	✓	✓	✓	✓	✓	✓	✓	✓	✓	✓	✓			✓
MPO	Anti-Mouse	ABT-101007				✓	✓	✓							✓			
NK1.1	Anti-Mouse	PK136	✓	✓	✓	✓	✓	✓		✓	✓	✓	✓	✓	✓			
Perforin	Anti-Mouse	S16009A																
TCR γ/δ	Anti-Mouse	UC7-13D5	✓	✓														
TCR γ/δ	Anti-Mouse	GL3			✓	✓												
TCRβ	Anti-Mouse	H57-597 (HB218)	✓	✓	✓	✓	✓	✓		✓	✓	✓	✓	✓	✓			✓
TER-119	Anti-Mouse	TER-119	✓	✓	✓	✓	✓	✓		✓	✓	✓	✓	✓	✓	✓		

Isotype Controls and Cocktails

Name	Reactivity	Clone	GeniePure	Unconjugated	Biotin	FITC	PE	APC	PerCP	PE/Cy5	PE/Cy7	PE/Cy5.5	PerCP/Cy5.5	GenieFluor 488	GenieFluor 647	PE/GenieFluor 594	GenieFluor Red 780	GenieFluor Violet 450	
Armenian Hamster IgG Isotype Control	Isotype Control	PIP	✓	✓	✓	✓	✓	✓				✓	✓	✓	✓	✓			✓
Mouse IgG1, κ Isotype Control	Isotype Control	MOPC-21	✓	✓	✓	✓	✓	✓	✓			✓	✓	✓	✓	✓		✓	✓
Mouse IgG2a, κ Isotype Control	Isotype Control	C1.18.4	✓	✓	✓	✓	✓	✓		✓	✓	✓	✓	✓	✓	✓		✓	✓
Mouse IgG2b, κ Isotype Control	Isotype Control	MPC-11	✓	✓	✓	✓	✓	✓		✓	✓	✓	✓	✓	✓	✓		✓	✓
Mouse IgG3, κ Isotype Control	Isotype Control	A112-3		✓	✓	✓	✓	✓					✓	✓	✓	✓		✓	✓
Mouse IgM, κ Isotype Control	Isotype Control	MM-30		✓	✓	✓	✓	✓	✓	✓	✓	✓	✓	✓	✓	✓		✓	✓
Rat IgG1, κ Isotype Control	Isotype Control	HRPN	✓	✓	✓	✓	✓	✓		✓	✓	✓	✓	✓	✓	✓		✓	✓
Rat IgG2a, κ Isotype Control	Isotype Control	2A3	✓	✓	✓	✓	✓	✓	✓	✓	✓	✓	✓	✓	✓	✓		✓	✓
Rat IgG2a, κ Isotype Control	Isotype Control	RTK2758																	✓
Rat IgG2a, λ Isotype Control	Isotype Control	B-39-4	✓		✓	✓	✓	✓	✓			✓	✓	✓	✓	✓			✓
Rat IgG2a, λ Isotype Control	Isotype Control	G013C12																	✓
Rat IgG2b, κ Isotype Control	Isotype Control	LTF-2	✓	✓	✓	✓	✓	✓	✓	✓	✓	✓	✓	✓	✓	✓		✓	✓
Rat IgM, κ Isotype Control	Isotype Control	RTK2118	✓		✓	✓	✓	✓					✓	✓	✓	✓			✓
Syrian Hamster IgG Isotype Control	Isotype Control	SHG-1	✓		✓	✓	✓							✓	✓				✓

Name	Reactivity	Clones	FITC	PE	APC	PerCP	PE/Cy5	PE/Cy7	PE/Cy5.5	PerCP/Cy5.5
CD3-FITC/CD19-APC/CD16/CD56-PE Cocktail	Anti-Human	FITC CD3 [OKT-3], APC CD19 [4G7], PE CD16 [3G8], PE CD56 [5.1H11]	✓	✓	✓					
CD19-FITC/CD56-PE/CD3-PE/Cy7/CD45-PerCP Cocktail	Anti-Human	FITC CD19 [CB19], PE CD56 [5.1H11], PE/Cyanine7 CD3 Antibody [OKT-3], PerCP CD45 [HI30]	✓	✓		✓		✓		
CD3-APC/CD4-FITC/CD8a-PE Cocktail	Anti-Human	APC CD3 [OKT-3], FITC CD4 [RPA-T4], PE CD8a [OKT-8]	✓	✓	✓					
CD3-APC/CD4-FITC/CD8a-PerCP-Cy5.5 Cocktail	Anti-Human	APC CD3 [OKT-3], FITC CD4 [RPA-T4], PerCP/Cyanine5.5 CD8a [OKT-8]	✓		✓				✓	✓
CD3-FITC/CD16+CD56-PE Cocktail	Anti-Human	FITC CD3 [OKT-3], PE CD16 [3G8], PE CD56 [5.1H11]	✓	✓						
CD3-FITC/CD19-PE Cocktail	Anti-Human	FITC CD3 [OKT-3], PE CD19 Antibody [CB19]	✓	✓						
CD3-FITC/CD4-PE/CD45-PerCP-Cy5.5 Cocktail	Anti-Human	FITC CD3 [OKT-3], PE CD4 [RPA-T4], PerCP/Cyanine5.5 CD45 [HI30]	✓	✓						✓
CD3-FITC/CD4-PE/CD8a-PE/Cy/CD45-PerCP Cocktail	Anti-Human	FITC CD3 [OKT-3], PE CD4 [RPA-T4], PE/Cyanine7 CD8a [OKT-8], PerCP CD45 [HI30]	✓	✓		✓		✓		
CD8a-FITC/CD4-PE/CD3-PE/Cy7/CD45-PerCP Cocktail	Anti-Human	FITC CD8a Antibody [OKT-8], PE CD4 Antibody [RPA-T4], PE/Cyanine7 CD3 [OKT-3], PerCP CD45 [HI30]	✓	✓		✓		✓		

“ Used by
scientists in
70+
countries ”

We love feedback!

**Our growth and ideas are powered by smiling scientists so
get involved in our community & conversations!**

Order your flow cytometry antibodies at
www.assaygenie.com or through our
global distributor network

www.assaygenie.com | Assay Genie 2022

25 Windsor Place, Dublin, Ireland | 2 Duke St., London, UK

