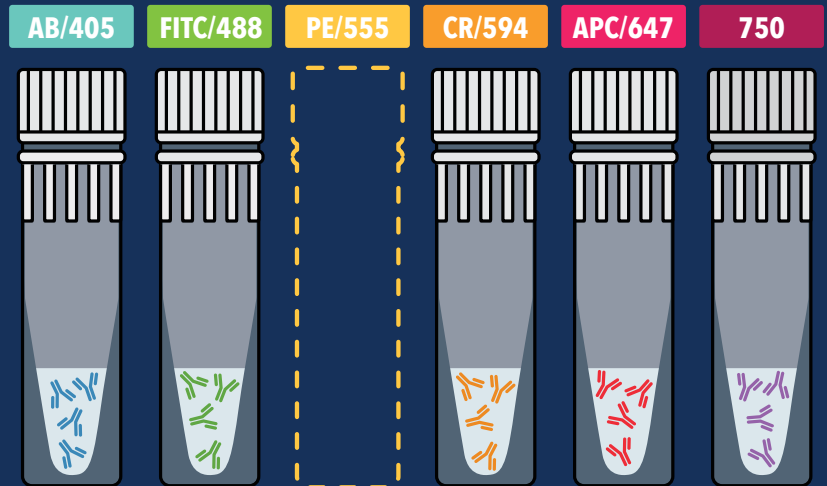


# Flow Cytometry Panels

Panel design for flow cytometry can be a perplexing problem, especially for beginner and occasional flow users. Proteintech's flow cytometry panels can get you started on the right foot with all the markers necessary to find your target cells. They are expert designed and verified, include clear step-by-step gating strategies and rigorous validation data, and keep the PE channel open for your target of interest.

- Top cited clones you know and trust
- Five full-sized antibodies
- Beginner-friendly and transparent validation data
- Population-defining markers to help you find your cells



Catalog No.	Product Name	Targets Included
PK30007	T-Cell Basics Panel	CD3, CD4, CD81, CD45, CD19
PK30008	B-Cell Basics Panel	CD3, CD45, CD19, CD20, CD21
PK30009	NK Cell Basics Panel	CD3, CD7, CD16, CD56, CD96
PK30010	Monocyte Basics Panel	CD3, CD14, CD16, CD64, HLA-DR
PK30011	Memory/Naive T Cell Basics Panel	CD3, CD4, CD8a, CD45RA, CD45RO
PK30012	TBNK Basics Panel	CD3, CD4, CD8a, CD19, CD56

## Sample Validation Data

